

L I F T C O L L E C T I O N



LC. PLAT 2+ OPEN PLATFORM LIFT DDA (1735.7/1735.15) Collection

Contact us for more information at:
Enquiries: hello@liftcollection.com.au
Phone: 1800 940 955
Locations Serviced: NSW & ACT

SPECIFICATIONS LC. PLAT 2+

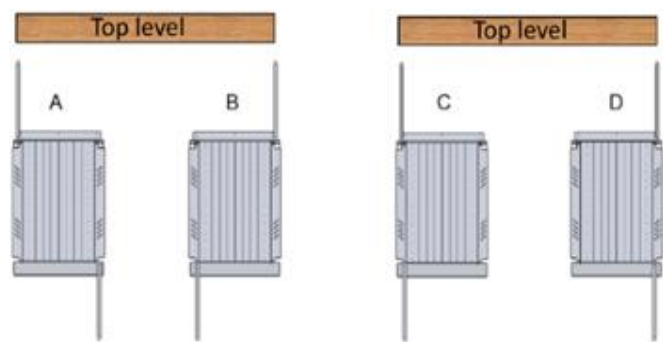
Model	LC. PLAT 2+
Model Type	Open platform
Manufacturing Location	Europe
Door Type	Single hinge swing - Manual
Door Configuration	Through car only
Drive	Electric belt
Speed	0.1m/s
Machine Cabinet	Integrated into guide rails
Lifting Capacity	400kg
Travel Max (m)	1000mm-2000mm
Sizes	1
Stops	2 (g, l1)
Headroom (mm)	1800mm
Pit (mm)	Not required
Location	Indoors & Outdoors *upgrade
Installation Type	Assembly on-site
Safety Sensors	Pressure switch under platform, emergency alarm
Emergency Power	Battery powered
Emergency Phone	Not included
Installation time	3 days
Servicing recommended	<p>A minimum of 1 service per 6 months is required by AS1735, the manufacturer & Safe Work Australia. Additional servicing maybe required for the following situations.</p> <ul style="list-style-type: none"> -Heavy usage -Coastal/harsh/Warmer conditions -Older lift (5+ years) -Damage from environmental factors like flooding.
Warranty	1 year
Manufacturing + Shipping Lead time	20 weeks
Compliance	Lift Code: AS1735-15 Accessibility by persons with impaired mobility in low-traffic areas
Power Requirements	Single Phase: Separate Independent dedicated 230 V, 25-amp power circuit switch from main switch board to lift drive wall location
Structural Requirements	<p>Base: The base has been designed and approved by an engineer to adequately support the load of the lift.</p> <p>Level 1 Landing: The landing has been designed and approved by an engineer to adequately support the load of the lift.</p>
Retro-fit Requirements	Contact us for a complimentary site assessment to determine suitability for retro-fitting this lift into your building.

SIZING LC. PLAT 2+

The following specification details are for the LC. PLAT 2+ lift. Specific plans will be provided per project; please do not build to the following specifications. All measurements in (mm)

	Platform Width	Platform Depth	Platform Height	Door Opening Width	Door Opening Height	Level 1/Landing Cut-out Width	Install Width	Install Depth	KG
1 Standard	1100	1400	1100	950	1100	1320	1560	1770	400

Door Configuration



SELECTIONS LC. PLAT 2+

Unit Finish



Included: Standard

Standard Finish: Indoors only

Platform Car:
Painted steel Ral 9006 silver anodized aluminium with glass wall & gates

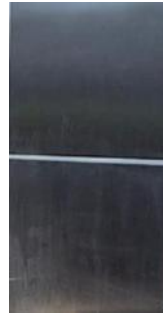
Drive Wall:
Painted steel Ral 9006 silver anodized aluminium



Upgrade

Painted any RAL colour

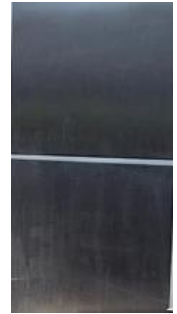
Included:
-All steel components except for the platform floor



Upgrade

Outdoors: Stainless steel 304

Included:
- All steel components
- Required if the lift is to be installed outside



Upgrade

Outdoors: Stainless steel 316 Marine

Included:
- All steel components
- Suitable for marine or harsh environments

Platform & Landing Entrance/Exit



Included: Standard

Single Hinge Swing Left or Right:
Manual

Painted steel Ral 9006 silver anodized aluminium with glass wall & gates



Included: Standard

Single Hinge Swing Left or Right:
Manual

Painted steel Ral 9006 silver anodized aluminium with glass wall & gates



Upgrade

Single Hinge Swing Left or Right:
Automatic

SELECTIONS LC. PLAT 2+

Landing Controls



Included: Standard

Platform/G landing
button mounted on
post



Included: Standard

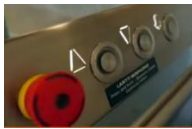
Level 1 landing
button mounted on
gate



Upgrade

Remote landing
control mounted on
wall

Platform Controls



Included: Standard

- x2 Controls panels: 1 on the left & 1 on the
right side.

Horizontal above the handrail across the top
of the platform on the left side

-Hold to run mechanical push buttons with
braille and controls compliant with Australian
standards w/ emergency stop

Platform Floor






Included: Standard

Non-slip checker
plate steel

BUILD GUIDE LC. PLAT 2+

SITE REQUIREMENTS (Minimum) – COMPLETED BY BUILDER

Please take wide shot photos at every step, provide a walk-through video or call Lift Collection for a complimentary video call/site visit.
P: 1800 940 955 | E: hello@liftcollection.com.au

<p>BASE/GROUND FLOOR</p>		<ul style="list-style-type: none"> - The foundation must be solid, level, and stable, with no damage. <i>If there is any fall, please specify.</i> - Concrete only is acceptable as the base material. - The base must be capable of withstanding 1,100 kg of force at the mast area (<i>within the first 400mm of installation depth from the landing</i>). - An engineer's certificate is required.
<p>LANDING</p>		<ul style="list-style-type: none"> - Square and level to suit the client's requirements <i>*If there is fall please note</i> - Dimensions of the level 1 landing to suited by the client as specified by the healthcare professional - Concrete, steel, core-filled block or alternative designed by an engineer - Must be able to withstand 800kg of force at the mast area (the first 400mm of the installation from the level 1 landing down from finished floor) - Balustrade & all other finishing for example painting to be completed prior to the lift installation
<p>POWER REQUIREMENTS</p>		<ul style="list-style-type: none"> - Location: At the drive wall/mast area with a 2m coil in accordance with Australian Standards - Type of Circuit: Separate independent 20-amp single-phase circuit - Isolated at the switchboard ready prior to use

The **LC. PLAT 2+** is a part of our **DDA Collection** which has been curated for the following:

Shared Public Areas

Schools

Hospitals

Clinics

Office buildings

Warehouses

Factories

Childcare facilities

Retirement Villages

Disability access upgrades

Apartment Buildings

Government Buildings

Residential Developments

Shopping centers

Compliance

Lift Code: AS1735-15 Accessibility by persons with impaired mobility in low-traffic areas

Lift Code: AS1735.7 Stairway Platform Lifts

Contact us for more information at:

Enquiries: hello@liftcollection.com.au

Phone: 1800 940 955

Locations Serviced: NSW & ACT

