

# L I F T C O L L E C T I O N



## LC. STAIR PL INCLINED STAIR PLATFORM LIFT Independence Collection

Contact us for more information at:  
Enquiries: [hello@liftcollection.com.au](mailto:hello@liftcollection.com.au)  
Phone: 1800 940 955  
Locations Serviced: NSW & ACT

# SPECIFICATIONS LC. STAIR PL

Model	LC. STAIR PL
Model Type	Inclined platform stairlift
Manufacturing Location	Europe
Door Type	Barrier arms: Automatic
Door Configuration	Through
Drive	Electric rack & Pinion with chain
Speed	0.11m/s
Machine Cabinet	Integrated into guide rails
Lifting Capacity	250kg-300kg
Travel Max (m)	500mm-25,000mm
Sizes	25
Stops	3
Headroom (mm)	2400mm
Pit (mm)	Not required
Location	Indoors & <a href="#">Outdoors</a> *upgrade
Installation Type	Assembly on-site
Safety Sensors	Pressure switch under platform, emergency alarm, audio signalling when in use
Emergency Power	Battery powered
Emergency Phone	Not included
Installation time	Straight run: 3 days every 5000mm travel Curved run: 5 days every 5000mm travel
Servicing recommended	A minimum of 1 service per 12 months is required by AS1735, the manufacturer & Safe Work Australia. Additional servicing maybe required for the following situations. -Heavy usage -Essential mobility access -Coastal/harsh/Warmer conditions -Older lift (5+ years) -Damage from environmental factors like flooding.
Warranty	2 years
Manufacturing + Shipping Lead time	18 weeks
Compliance	Lift Code: AS1735-7 for restricted-use stairway access
Power Requirements	Single Phase: Separate Independent dedicated 230 V, 20-amp power circuit switch from main switch board to within 200mm-500mm of the lift
Structural Requirements	Wall or floor structurally engineered, constructed & certified
Retro-fit Requirements	Contact us for a complimentary site assessment to determine suitability for retro-fitting the lift into your home.

# STRAIGHT RUN SIZING LC. STAIR PL

The following specification details are for the LC. STAIR PL lift. Specific plans will be provided per project; please do not build to the following specifications.

All measurements in (mm). Folded width\_wall mount): 260mm / Folded width\_column mount): 350mm

Sizes	Platform Width	Platform Depth	Stairwell width for installation_ Wall Mount	Stairwell width for installation_ Columns Mount	Installation Floorspace at bottom of stairwell
1 Std	800	1000	1030	1110	1560
2	600	800	830	910	1360
3	600	900	830	910	1460
4	600	1000	830	910	1560
5	650	800	880	910	1360
6	650	850	880	960	1410
7	650	900	880	960	1460
8	650	1000	880	960	1560
9	700	800	930	1010	1360
10	700	900	930	1010	1460
11	700	1000	930	1010	1560
12	750	800	980	1060	1360
13	750	900	980	1060	1460
14	750	950	980	1060	1510
15	750	1000	980	1060	1560
16	800	800	1030	1110	1360
17	800	850	1030	1110	1410
18	800	900	1030	1110	1460
19	800	1100	1030	1110	1660
20	800	1200	1030	1110	1760
21	800	1250	1030	1110	1810
22	900	1000	1130	1210	1560
23	900	1100	1130	1210	1660
24	900	1200	1130	1210	1760
25	900	1250	1130	1210	1810

# CURVED RUN SIZING LC. STAIR PL

The following specification details are for the LC. STAIR PL lift. Specific plans will be provided per project; please do not build to the following specifications.

All measurements in (mm). Folded width\_wall mount): 260mm / Folded width\_column mount): 350mm

Sizes	Platform Width	Platform Depth	Stairwell width for installation_ Wall Mount	Stairwell width for installation_ Columns Mount	Installation Floorspace at bottom of stairwell
1 Std	800	1000	1180	1240	1560
2	600	800	970	1030	1360
3	600	900	970	1030	1460
4	600	1000	970	1030	1560
5	650	800	1010	1070	1360
6	650	850	1010	1070	1410
7	650	900	1010	1070	1460
8	650	1000	1010	1070	1560
9	700	800	1090	1150	1360
10	700	900	1090	1150	1460
11	700	1000	1090	1150	1560
12	750	800	1130	1190	1360
13	750	900	1130	1190	1460
14	750	950	1130	1190	1510
15	750	1000	1130	1190	1560
16	800	800	1240	1300	1360
17	800	850	1240	1300	1410
18	800	900	1240	1300	1460
19	800	1100	1240	1300	1660
20	800	1200	1240	1300	1760
21	800	1250	1240	1300	1810
22	900	1000	1330	1390	1560
23	900	1100	1330	1390	1660
24	900	1200	1330	1390	1760
25	900	1250	1330	1390	1810

# SELECTIONS LC. STAIR PL

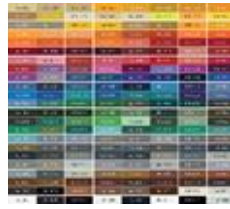
## Unit Finish



### Included: Standard

Standard Finish: Indoors only

Painted steel – Ral 7048  
pearl mouse grey  
Platform Wall  
Platform Barrier arms  
Platform floor & ramps  
whilst folded in up  
position



### Upgrade

Painted any RAL colour

Included:  
-All steel components  
except for the platform  
floor



### Upgrade

Outdoors: Stainless steel

Included:  
- All steel components  
- Required if the lift is to be  
installed outside  
-Weather protection cover  
included



### Upgrade

Outdoors: Stainless steel  
marine

Included:  
- All steel components  
- Suitable for marine or harsh  
environments  
-Weather protection cover  
included

## Platform Controls



### Included: Standard

Horizontal across the top  
of the platform  
Hold to run mechanical  
push buttons and controls  
suitable compliant with  
Australian standards w/  
emergency stop switches



### Included: Standard

Additional wireless  
remote control for  
easier use

## Landing Controls



### Included: Standard

Wireless wall-switch (surface or  
flush-mounted) with key-switch for  
one stop – Outdoor rated plastic



### Upgrade

Wireless wall-switch (surface or  
flush-mounted) with key-switch  
for one stop – Outdoor rated  
stainless steel

# SELECTIONS LC. STAIR PL

## Rail Type



Included: Standard

Straight run  
1m of rail  
Wall mounted  
Standard stainless  
steel



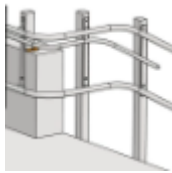
Upgrade

Stainless V4A/316  
per metre  
Suitable for marine  
or harsh  
environments



Upgrade

Curved Rail Design  
Additional per metre



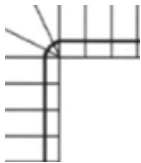
Upgrade

Stabilisation rail  
required for an angle  
of 0-degrees to 25-  
degrees per metre



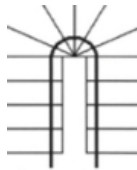
Upgrade

Landing



Upgrade

90-degree bend



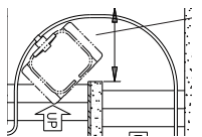
Upgrade

180-degree bend in  
the course



Upgrade

180-degree bend  
parking



Upgrade

Special curve per  
metre



Upgrade

Column Mount –  
Galvanized or  
painted  
\*Inside installation



Upgrade

Column Mount –  
Stainless steel  
\*Outside installation



Upgrade

Column mount –  
Between column  
cover when unit is  
exposed on the rear

Polycarbonate 3mm  
thick

# SELECTIONS LC. STAIR PL

## Platform Floor



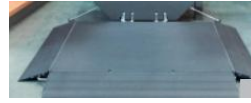
### Included: Standard

Platform base: Anti-slip rubber  
Front & rear folding ramp:  
170mm long / Anti-slip  
Colour: Ral 7016  
Anthracite grey



### Upgrade

Access ramp increased  
length to 300mm



### Upgrade

Additional access ramp:  
Side access

## Accessories



### Upgrade

Fold down seat w/remote  
control on spiral cable –  
Indoors.  
Painted the same colour  
as the lift



### Upgrade

Fold down seat w/remote  
control on spiral cable –  
Outdoors.  
Stainless steel finish

# HEALTH PROFESSIONALS PLANNING GUIDE

## INCLINED PLATFORM STAIRLIFTS

\*Did you know Lift Collection offers complimentary site visits & video calls? Contact us to discuss further.

Lift Collection – P: 1800 940 955 | E: [hello@liftcollection.com.au](mailto:hello@liftcollection.com.au)

## USER DETAILS

Name		Phone number	
Installation address			
Budget & funding?	NDIS / DVA / HCP / CHSP / Private / Other		

## USER REQUIREMENTS ASSESSMENT

<b>Are there any factors that might affect the client's ability to use a stairlift safely?</b>
<i>If yes, please specify -</i>
<b>Does the user have the cognitive ability to understand and retain instructions?</b>
<i>If yes, please specify -</i>
<b>Does the user have a carer?</b>
<i>If yes, please specify -</i>
<b>Can the client transfer independently onto the stairlift, or will assistance be required?</b>
<i>If yes, please specify -</i>
<b>Are there any vision, hearing, or coordination issues that may impact safe use?</b>
<i>If yes, please specify -</i>
<b>Does the client use any mobility aids? If so, please note the type, dimensions &amp; weight of the mobility aid?</b>
<i>If yes, please specify – Type:</i>
<i>weight:</i>
<i>Width:</i>
<i>Length:</i>

## USER DETAILS

<b>1) Height – Standing</b> <i>For general reference</i>	
<b>2) Height from floor to top of head – Seated</b> <i>This determines the minimum head clearance to ensure there are no obstructions that could injure the user.</i>	
<b>3) Width – seated</b> <i>*This will ensure the lift is suitable &amp; allows the user to be comfortable</i>	
<b>4) Weight</b> <i>*This will ensure the lifting capacity of the lift is suitable</i>	

## INSTALLATION DETAILS

*Please take wide shot photos at every step, provide a walk-through video or call Lift Collection for a complimentary video call/site visit.*

P: 1800 940 955 | E: [hello@liftcollection.com.au](mailto:hello@liftcollection.com.au)

1] Inside or outside installation?	Inside / Outside – Exposed / Outside – Under Cover
2] Overall length of staircase in mm?	
3] Number of steps?	
4] Width (w) & height (h) of stairs in mm?	W:            x   H:
5] Number of landings?	
6] Width (w) & depth (d) of landings in mm?	W:            x   D:
7] Are there any overhead obstructions or height restrictions?	
8] Space at the bottom & top of stairs width (w) & depth (d) in mm?	Bottom - W:            x   D :            / Top - W:            x   D:
9] Staircase configuration? Please circle one	Straight / Curved
10] Material of steps? Please circle one	Timber / Tile / Concrete / Marble / Steel / Other - Specify
11] Material of wall? Please circle one	Timber / Concrete / Brick / Steel / Core filled block / Concrete filled dintel



# BUILD GUIDE LC. STAIR PL

## SITE REQUIREMENTS (Minimum) – COMPLETED BY BUILDER

Please take wide shot photos at every step, provide a walk-through video or call Lift Collection for a complimentary video call/site visit.  
P: 1800 940 955 | E: hello@liftcollection.com.au

<p>BASE – GROUND FLOOR: AS PER SIZING SPECIFICATIONS</p>		<ul style="list-style-type: none"> <li>- The foundation must be solid, level, and stable, with no damage. <i>If there is any fall, please specify.</i></li> <li>- Acceptable base materials include solid concrete stairs, steel pan stairs filled with concrete, 76mm thick wood stairs/landings</li> <li>- The base must be capable of supporting a total load of 480 kg (<i>unit weight: 180 kg + lifting capacity: 300 kg</i>).</li> </ul>
<p>STAIRS REQUIRED: AS PER SIZING SPECIFICATIONS</p>		<ul style="list-style-type: none"> <li>- Wall-Mounted: The stairlift can be fixed to: Concrete walls, Concrete-filled block walls, Structural timber walls (as per engineer's requirements), Double brick walls (must have access to both sides for secure fixing)</li> <li>- Post-Mounted on Steps: If wall mounting is not suitable, the lift can be mounted using posts on: Solid concrete stairs, Steel pan stairs filled with concrete, Timber stairs/landings with a minimum thickness of 76mm</li> <li>- Pre-Installation Requirements: Stairs and walls must be fully completed before lift installation. Structural integrity must be verified to ensure the mounting surface can support the lift.</li> <li>- Must be designed, constructed &amp; certified by an engineer</li> </ul>
<p>POWER REQUIREMENTS</p>		<ul style="list-style-type: none"> <li>- Location: No closer than 100mm &amp; no further away than 1500mm outside of the installation area at either the top or bottom of staircase in accordance with Australian Standards</li> <li>- Type of Circuit: Separate independent 25-amp single-phase circuit</li> <li>- Isolation switch suitable to inside or outside depending on installation location</li> <li>- Active and ready to use prior to the lift installation</li> </ul>

The LC. STAIR PL is a part of our Independence Collection which has been curated for the following:

Private homeowners

Occupational Therapists

Home Modifications Builders

Providing visitors & family members the freedom to access their home

NDIS recipients

My Age Care recipients

DVA recipients

Insurance claims

### Compliance

Lift Code: AS1735-15 Accessibility by persons with impaired mobility in low-traffic areas

Lift Code: AS1735.7

Building Code: BCA-E3.6

Contact us for more information at:

Enquiries: [hello@liftcollection.com.au](mailto:hello@liftcollection.com.au)

Phone: 1800 940 955

Locations Serviced: NSW & ACT

