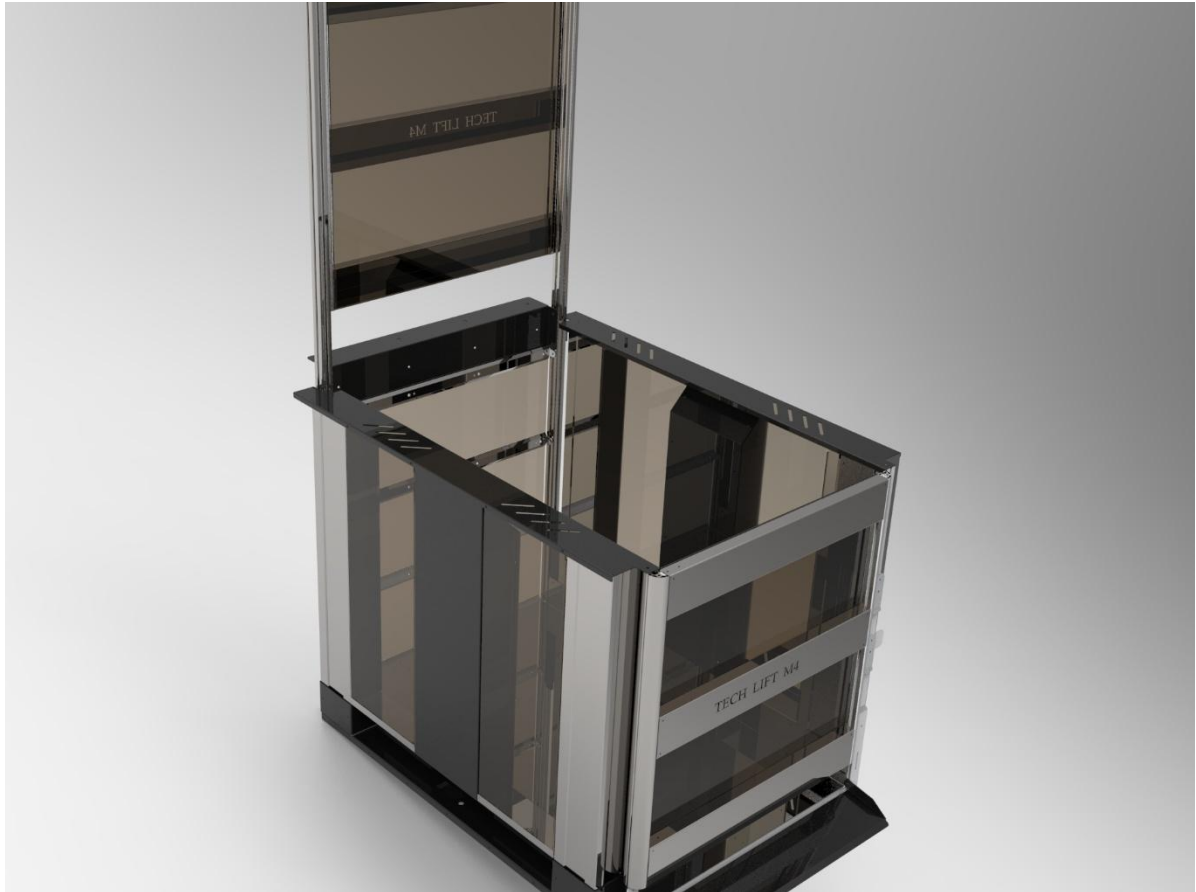


# L I F T C O L L E C T I O N



## LC. PLAT 17 CATALOGUE Independence Collection

Contact us for more information at:  
Enquiries: [hello@liftcollection.com.au](mailto:hello@liftcollection.com.au)  
Phone: 1800 940 955  
Locations Serviced: NSW & ACT

# SPECIFICATIONS LC. PLAT 17

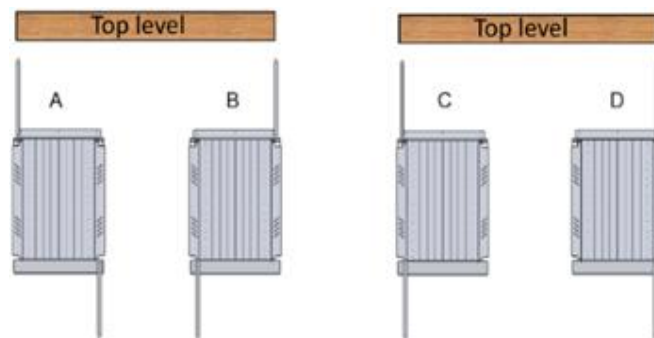
Model	LC. PLAT 17
Model Type	Open platform
Manufacturing Location	Australia
Door Type	Swing with single hinge left or right - Manual
Door Configuration	Through car
Drive	Electric telescopic posts
Speed	0.08m/s
Machine Cabinet	No
Lifting Capacity	Up to 500kg
Travel Max (mm)	40-1700 max
Sizes	3
Stops	2 (G, L1)
Headroom (mm)	1800mm
Pit (mm)	0mm comes with ramp mounted to the base frame
Location	Indoors & Outdoors
Installation Type	Pre-built/Assembly on-site
Safety Sensors	Pressure switch under platform, emergency alarm & <a href="#">self-rescue</a> emergency lowering for inside the platform
Emergency Power	Battery powered
Emergency Phone	Not included
Installation time	1 day
Servicing recommended	<p>A minimum of 1 service per 12 months is required by AS1735, the manufacturer &amp; Safe Work Australia. Additional servicing maybe required for the following situations.</p> <ul style="list-style-type: none"> <li>-Heavy usage</li> <li>-Essential mobility access</li> <li>-Coastal/harsh/Warmer conditions</li> <li>-Older lift (5+ years)</li> <li>-Damage from environmental factors like flooding.</li> </ul>
Warranty	3 years
Manufacturing + Shipping Lead time	15 weeks
Compliance	Lift Code: AS1735-15 Accessibility by persons with impaired mobility in low-traffic areas
Power Requirements	Single Phase: Separate Independent dedicated 230 V, 20-amp power circuit with GPO from Main Switch Board to within 200mm-500mm of the lift
Structural Requirements	A base that can withstand up to 700kg: Concrete, timber, steel, road base.
Retro-fit Requirements	Contact us for a complimentary site assessment to determine suitability for retro-fitting the lift into your home.

# SIZING LC. PLAT 17

The following specification details are for the LC. PLAT 17 lift. Specific plans will be provided per project; please do not build to the following specifications.

	Platform Width (mm)	Platform Depth (mm)	Platform Height (mm)	Door Opening Width (mm)	Door Opening Height (mm)	Level 1/Landing Cut-out Width (mm)	Installation Width	Installation Depth
<b>S</b> Upgrade	800	1400	1130	800	1130	1080	1260	1630
<b>M -</b> Standard	900	1400	1130	900	1130	1180	1360	1630
<b>L</b> Upgrade	1100	1400	1130	900	1130	1260	1560	1630

## Door Configuration



# SELECTIONS LC. PLAT 17

## Model



Included: Standard

500kg lifting  
capacity

## Unit Finish



Included: Standard

### Standard Finish

#### Sides:

Actuator motors at the  
corners of lift car:  
Anodized aluminium

Steel centre columns  
painted black with light  
grey plexiglass

Actuator motors at the  
corners of lift car when in  
up position: Anodized  
aluminium

#### Top of car plate:

Steel painted black

#### Trim at the bottom lift car & base mounted on the ground:

Steel painted black



Upgrade

### Painted any RAL colour

#### Included:

-Actuator motors at the  
corners of lift car  
-Top of car plate  
-Platform gate  
-Landing gate  
-Side wall panels  
-Platform floor with  
standard grip tape  
-Trim at the bottom lift  
car & base mounted on  
the ground

#### Not included:

-Actuator motors when  
extended at the corners  
of lift car when in up  
position  
-Landing gate guides  
aluminium T slot rails:  
\*Cannot be painted as  
they are a moving part



Upgrade

### Architectural vinyl wrap \*Indoors only

#### Included:

-Actuator motors at the  
corners of lift car  
-Top of car plate  
-Platform gate  
-Landing gate  
-Side wall panels  
-Platform floor with  
standard grip tape  
-Trim at the bottom lift  
car & base mounted on  
the ground

#### Not included:

-Actuator motors when  
extended at the corners  
of lift car when in up  
position  
-Landing gate guides  
aluminium T slot rails:  
\*Cannot be painted as  
they are a moving part



Upgrade

### Hairline Stainless steel w/clear or light grey plexiglass

#### Included:

-Top of car plate  
-Platform gate  
(horizontal only)  
-Landing gate (horizontal  
only)  
-Side wall panels  
-Platform floor with  
standard grip tape

#### Not included:

-Actuator motors at the  
corners of lift car  
-Actuator motors when  
extended at the corners  
of lift car when in up  
position  
-Trim at the bottom lift  
car & base mounted on  
the ground  
-Landing gate guides  
aluminium T slot rails:  
\*Cannot be painted as  
they are a moving part

# SELECTIONS LC. PLAT 17

## Platform & Landing Entrance/Exit



Included: Standard

Single Hinge Swing Left or Right:  
Manual

Standard Finish

Sides: Anodized aluminium

Horizontal centre panels x3:

3 steel panels painted black

Infill panel: Tinted grey plexiglass



Upgrade

Middle Horizontal Centre Removed



Upgrade

Electric automatic open with gas  
strut close to reduce the chance  
of damage with misuse –  
weather resistant



Upgrade

Platform Entrance/Exit  
– Swap gate to ramp & dual  
barrier arms

**Ramp:**

Checker plate

Stainless steel finish

x2 actuators that can

withstand over 400kg of force

**Dual Barrier Arms:**

Barrier arms-automatically  
raise at ground floor & lower  
when rising to level 1 \*not  
motorized:

Anodized aluminium T-slot rail

## Landing Controls



Included: Standard

X2 Wireless  
mechanical outdoor  
rated plastic push  
button installed at  
landings on a wall



Upgrade

1 additional control to use as a remote control  
whilst in lift

## Platform Controls



Included: Standard

Horizontal across the  
top of the platform on  
the left side

Hold to run mechanical  
push buttons and  
controls suitable  
compliant with  
Australian standards w/  
emergency stop  
switches

Reset toggle: Self rescue

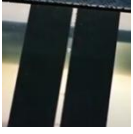


Upgrade

1 additional control to installed on the right-  
hand side

# SELECTIONS LC. PLAT 17

## Platform Floor



Included: Standard

Anti-slip stainless  
steel & black grip  
tape

# HEALTH PROFESSIONALS PLANNING GUIDE

## OPEN PLATFORM LIFTS

*\*Did you know Lift Collection offers complimentary site visits & video calls? Contact us to discuss further.  
Lift Collection – P: 1800 940 955 | E: [hello@liftcollection.com.au](mailto:hello@liftcollection.com.au)*

## USER DETAILS

Name		Phone number	
Installation address			
Budget & funding?	NDIS / DVA / HCP / CHSP / Private / Other		

## USER REQUIREMENTS ASSESSMENT


<b>Are there any factors that might affect the client's ability to use a open platform lift safely?</b>
<i>If yes, please specify -</i>
<b>Does the user have the cognitive ability to understand and retain instructions?</b>
<i>If yes, please specify -</i>
<b>Does the user have a carer?</b>
<i>If yes, please specify -</i>
<b>Can the client transfer independently into the open platform lift, or will assistance be required?</b>
<i>If yes, please specify -</i>
<b>Are there any vision, hearing, or coordination issues that may impact safe use?</b>
<i>If yes, please specify -</i>
<b>Does the client use any mobility aids? If so, please note the type, dimensions &amp; weight of the mobility aid?</b>
<i>If yes, please specify – Type:</i>
<i>weight:</i>
<i>Width:</i>
<i>Length:</i>

## USER DETAILS

<p><b>1) Height – Standing</b>  <i>This determines the minimum clearance to ensure there are no obstructions that could injure the user.</i></p>	
<p><b>2) Height from floor to top of head – Seated</b>  <i>This determines the minimum head clearance to ensure there are no obstructions that could injure the user.</i></p>	
<p><b>3) Width – seated</b>  <i>*This will ensure the lift is suitable &amp; allows the user to be comfortable</i></p>	
<p><b>4) Weight</b>  <i>*This will ensure the lifting capacity of the lift is suitable</i></p>	

## INSTALLATION DETAILS

Please take wide shot photos at every step, provide a walk-through video or call Lift Collection for a complimentary video call/site visit.  
P: 1800 940 955 | E: [hello@liftcollection.com.au](mailto:hello@liftcollection.com.au)

1] Inside or outside installation?	Inside / Outside – exposed / Outside – under cover
2] Overall height from finished floor ground to desired level 1 landing in mm?	
3] Ground floor area: Width (w) & depth (d) in mm? <i>*Have you considered the access path for you client to enter &amp; exit the lift?</i>	W:            x    H:
4] Level 1 landing area: Width (w) & depth (d) in mm? <i>*Have you considered the access path for you client to enter &amp; exit the lift?</i>	W:            x    D:
5] Are there any overhead obstructions or height restrictions?	
6] Lift configuration? Please circle one	Straight through / 90-degree exit
7] Material of ground floor base? Please circle one	Timber / Tile / Concrete / Marble / Steel / Other - Specify
8] Does the ground floor base have any slope/fall? If so, note where and how much in mm.	

# BUILD GUIDE LC. PLAT 17

## Site requirements (minimum) – completed by client/builder

Please take wide shot photos at every step, provide a walk-through video or call Lift Collection for a complimentary video call/site visit.

P: 1800 940 955 | E: hello@liftcollection.com.au

<p><b>Installation Dimensions</b> centre to the landing: As per sizing specifications</p>		<ul style="list-style-type: none"> <li>- The foundation must be solid, level, and stable, with no damage. <i>If there is any fall, please specify.</i></li> <li>- Acceptable base materials include concrete, timber, tiles, road base, and pavers.</li> <li>- The base must be capable of supporting a total load of 650 kg (<i>unit weight: 150 kg + lifting capacity: 500 kg</i>).</li> </ul>
<p><b>Opening Dimensions</b> centre to the base: As per sizing specifications</p>		<ul style="list-style-type: none"> <li>- The base must be square and level, meeting the client's requirements.</li> <li>- 200mm block-out is required from where the lift meets the landing to allow for non-structural fixing of the lift threshold plate.</li> <li>- The landing must have a flush face where the lift butts up to prevent any catch points.</li> <li>- Balustrades and all finishing work (e.g., painting) must be completed before lift installation.</li> <li>- Level 1 landing dimensions (width &amp; depth) must be suited to the client's needs as specified by the healthcare professional.</li> </ul>
<p><b>POWER REQUIREMENTS</b></p>		<ul style="list-style-type: none"> <li>- Location: No closer than 200mm &amp; no further away than 1500mm outside of the installation area in accordance with Australian Standards</li> <li>- Type of Circuit: Separate independent 16-amp single-phase circuit</li> <li>- GPO suitable to inside or outside depending on installation location</li> </ul> <p>Active and ready to use prior to the lift installation</p>



The LC. PLAT 17 is a part of our INDEPENDENCE COLLECTION which has been curated for the following:

Private homeowners

Occupational Therapists

Home Modifications Builders

Providing visitors & family members the freedom to access their home

NDIS recipients

My Age Care recipients

DVA recipients

Insurance claims

### Compliance

Lift Code: AS1735-15 Accessibility by persons with impaired mobility in low-traffic areas

Lift Code: AS1735.7

Building Code: BCA-E3.6

Contact us for more information at:

Enquiries: [hello@liftcollection.com.au](mailto:hello@liftcollection.com.au)

Phone: 1800 940 955

Locations Serviced: NSW & ACT

