



# Natural Emergence

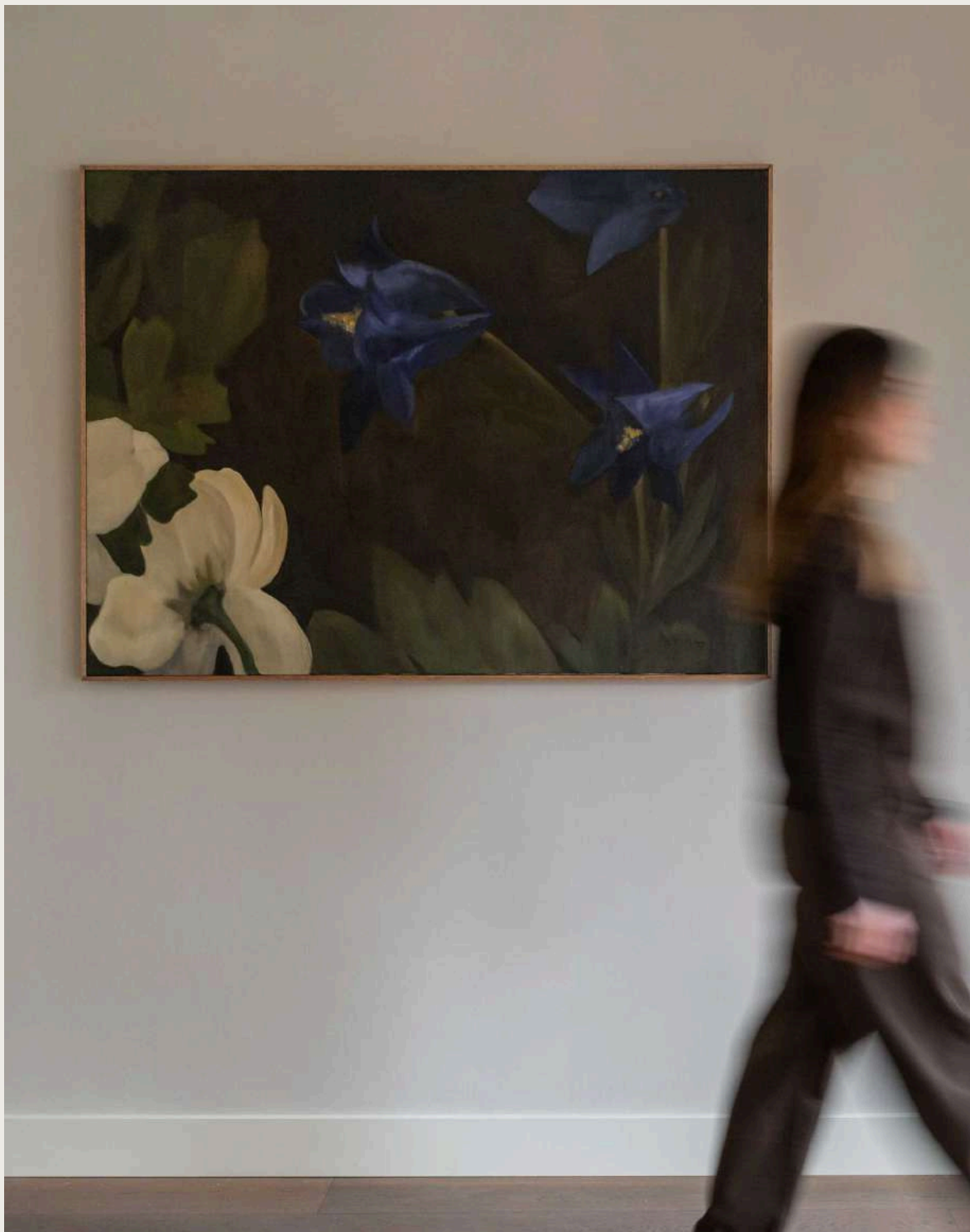
December 4 - March 8



# Natural Emergence

With Natural Emergence, we bring together the practices of Aimée Adriaansen and Kamila Sipika, two artists whose work is shaped by nature and defined by a deep sensitivity to material and process. Though distinct in expression, their works converse in a shared space, offering a moment of reflection through atmospheric environments.

Aimée captures the shifting space between abstraction and subtle natural suggestion, while Kamila explores the symbolic language of botanical forms through tonal contrasts. This duo show creates an immersive encounter with nature, unfolding slowly as an emergence.



**Hidden in Daylight, 2024**

Oil on canvas, natural pigments

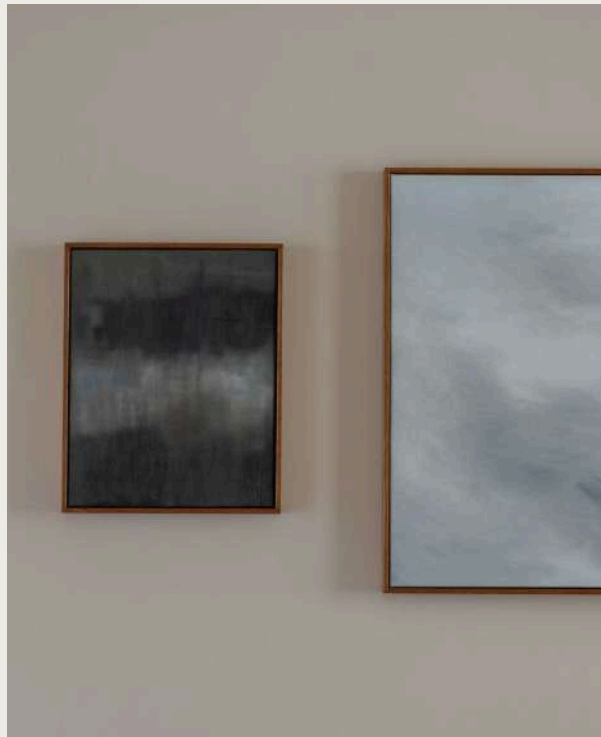
100 x 135 cm



# Aimée Adriaansen

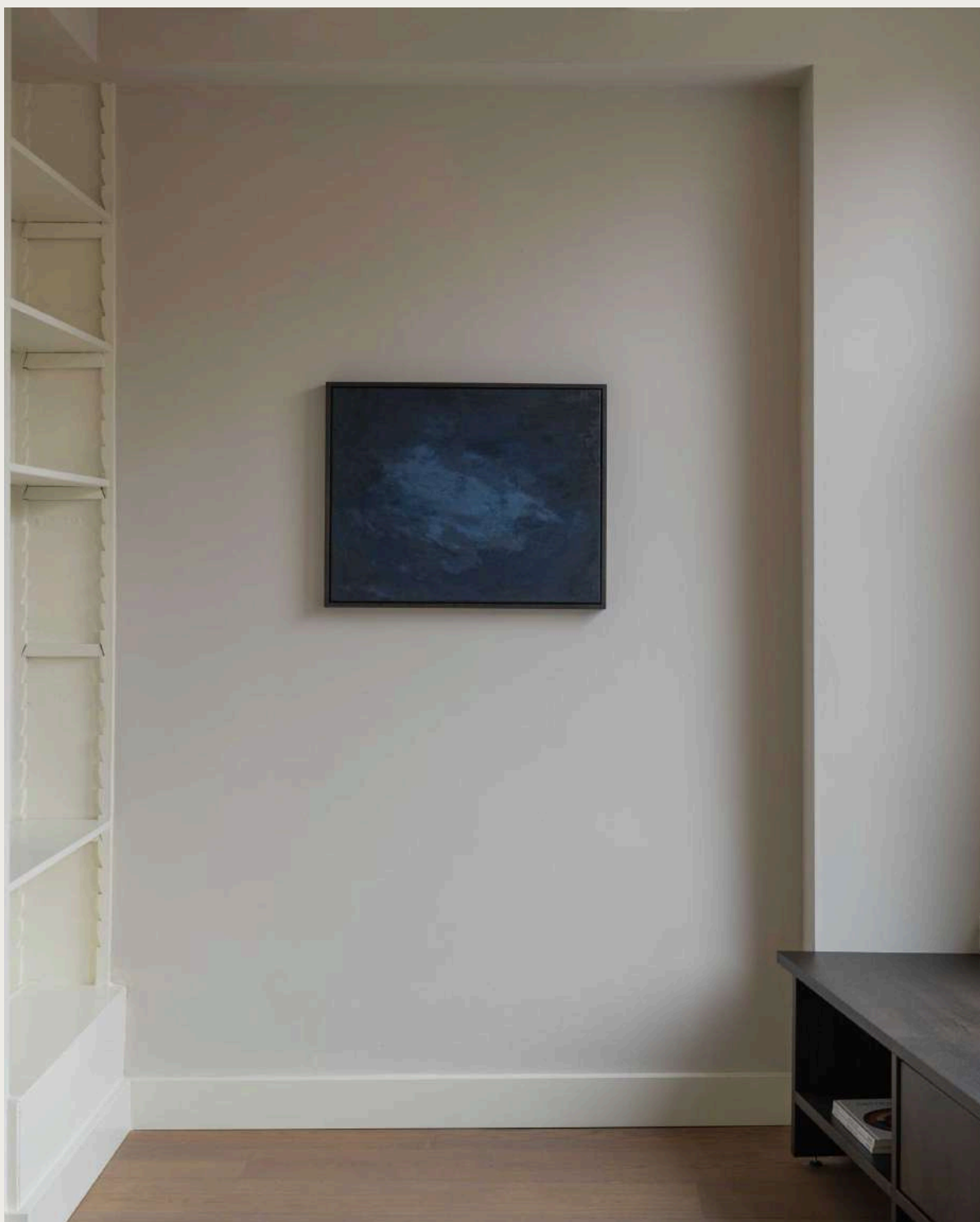
*Technique: oil paint*

*Style: abstract, gestural painting*



Aimée's paintings often begin as layered, gestural compositions, yet at times move toward more intentional forms. As the works unfold, traces of nature surface alongside purely abstract passages, creating a dialogue in which neither direction is fixed or final.





**Encompass, 2025**

Oil on linen

50 x 60 cm

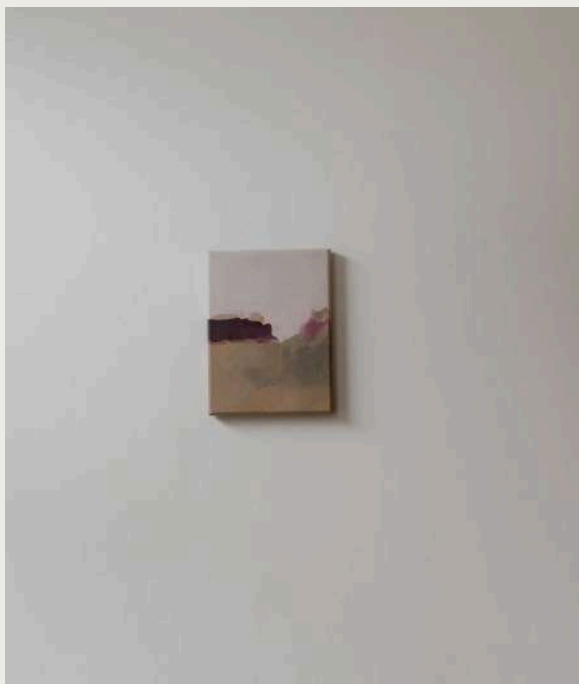


Her practice is rooted in material sensitivity, process and the balance between intention and intuition. Over time, her work has developed and now shifts between abstraction and figuration. Sometimes it leans toward recognizable forms such as hints of horizons, fields, tree-like structures or distant mountain shapes; at other times it remains open and atmospheric.

Rather than following a predetermined image, she follows the material itself: gestures, structures or impressions that emerge through layering, erasure and response. Working primarily with oil, she is drawn to its softness and depth and to the way color can be blended or built gradually over time. Color becomes central to the atmosphere of the work, setting its emotional temperature and guiding the viewer's sense of space.

Her palette of soft blues, earthy greens, muted yellows, warm neutrals and occasional deeper tones develops intuitively and is often inspired by the natural world. *Natural Emergence* marks her first public presentation of a larger body of work, offering insight into a language that continues to evolve.





**Overland, 2025**  
Oil on linen

24 x 18 cm  
520 EUR



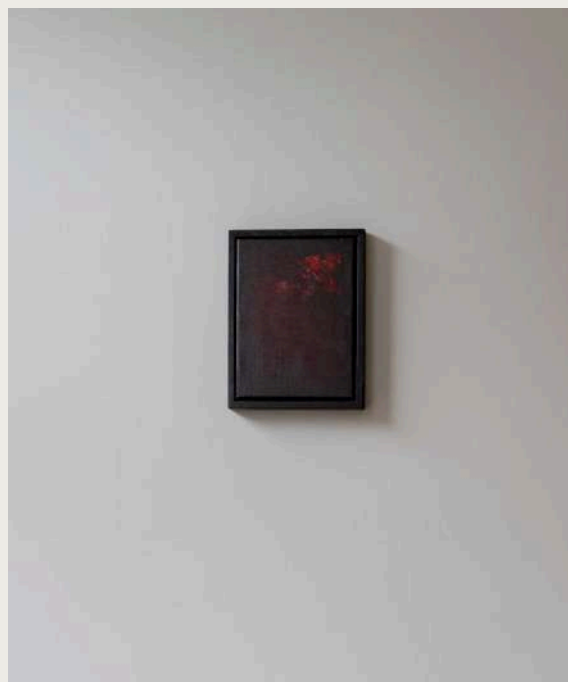
**Evening Silhouette II, 2025**  
Oil on linen

21 x 27 cm (incl frame)  
670 EUR



**Summit, 2025**  
Oil on linen

21 x 27 cm (incl frame)  
670 EUR



**Holding II, 2025**  
Oil on linen

21 x 27 cm (incl frame)  
670 EUR



**Soft Bloom, 2025**  
Oil on linen

53 x 43 cm (incl frame)  
1420 EUR



**A Forest Walk, 2025**  
Oil on linen

53 x 43 cm (incl frame)  
1420 EUR



**Before, 2025**  
Oil on linen

53 x 43 cm (incl frame)  
1420 EUR



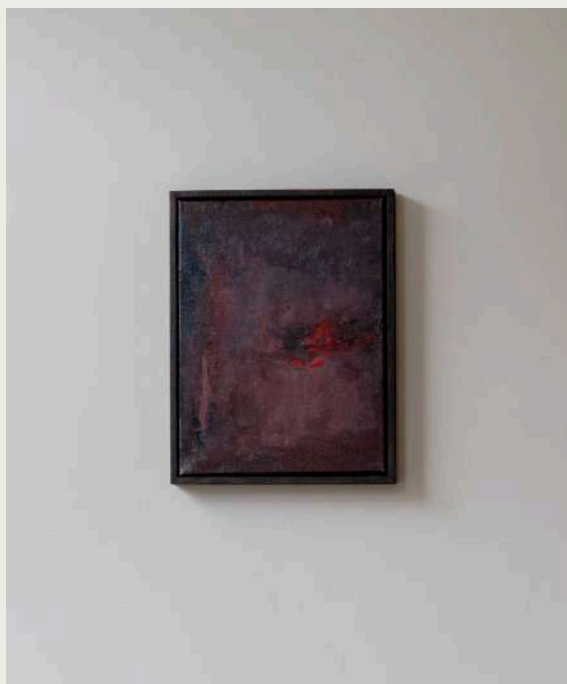
**February, 2025**  
Oil on canvas

55,5 x 45,5 cm (incl frame)  
1260 EUR



**Encompass, 2025**  
Oil on linen

53 x 63 cm (incl frame)  
1700 EUR



**Amid, 2025**  
Oil on linen

43 x 33 cm (incl frame)  
1140 EUR



**Evening Silhouette, 2025**  
Oil on linen

43 x 53 cm (incl frame)  
1420 EUR



**Highland, 2025**  
Oil on linen

83 x 63 cm (incl frame)  
2110 EUR





**A New Beginning, 2025**  
Oil on linen

83 x 103 cm (incl frame)  
2720 EUR

# Kamila Sipika

*Technique: natural pigments and oil on canvas*

*Style: figurative*



Kamila's work grows from careful observation of landscape, plants and the shifts of natural environments. Through slow layering, she creates atmospheric compositions in which botanical forms appear and dissolve, guided by muted light, tonal contrast and a subtle sense of movement.





**Left: Peony, a Flower of Healing, 2024**

**Right: Primrose, a Flower of Patience, 2024**

Oil on canvas, natural pigments

75 x 65 cm

Her process begins with studying plants, drying leaves or flowers, and experimenting with natural pigments. These materials inform both subject and color palette, which includes silvery blues, soft yellows, faded greens, warm greys and sandy neutrals. Working with oil paint and natural pigments on linen, cotton and organic paper, she allows the qualities of each surface to remain present.

History, ecology and folk traditions shape her way of looking, as do architectural structures and botanical illustration. These references form the foundation for works that sit between investigation and reflection, attentive to nature's cycles, stories and transformations.

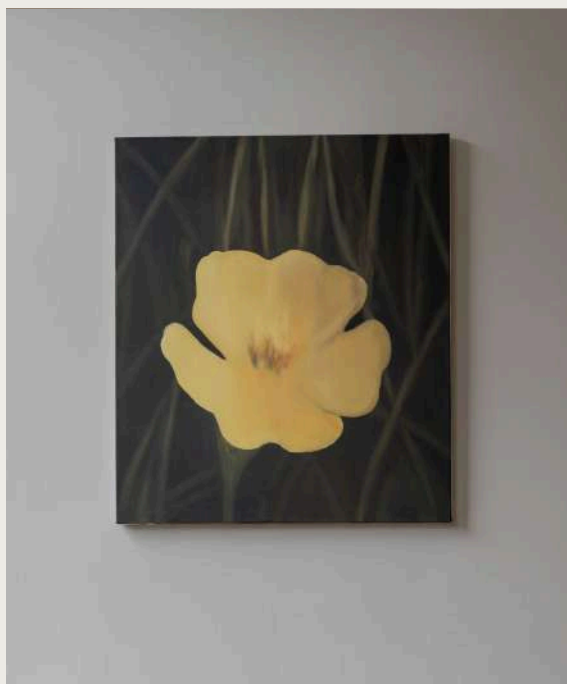
Kamila works internationally across painting, design collaborations and community-focused projects, integrating ecological awareness with a practice rooted in slowness and material sensitivity.





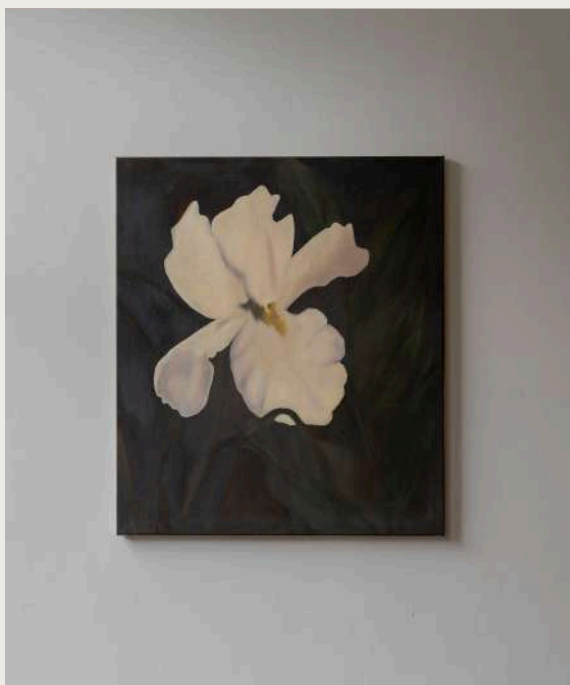
**Bluebell, a Flower of Gratitude, 2024**  
Oil on canvas, natural pigments

75 x 65 cm  
1590 EUR



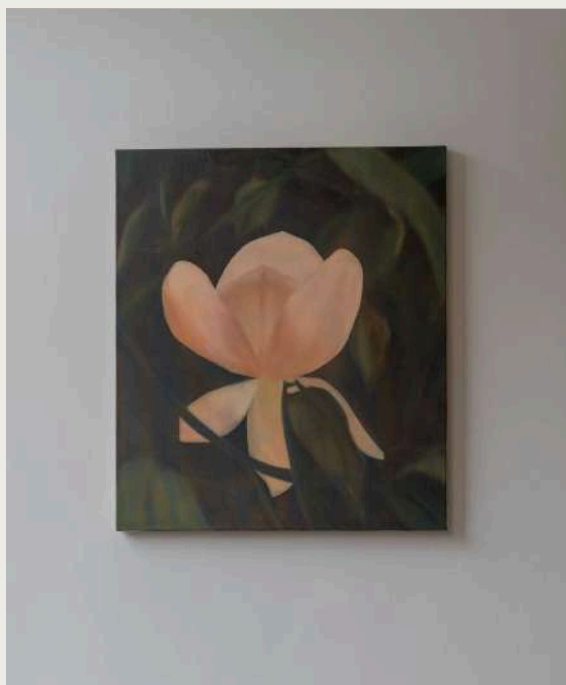
**Primrose, a Flower of Patience, 2024**  
Oil on canvas, natural pigments

75 x 65 cm  
1550 EUR



**Peony, a Flower of Healing, 2024**  
Oil on canvas, natural pigments

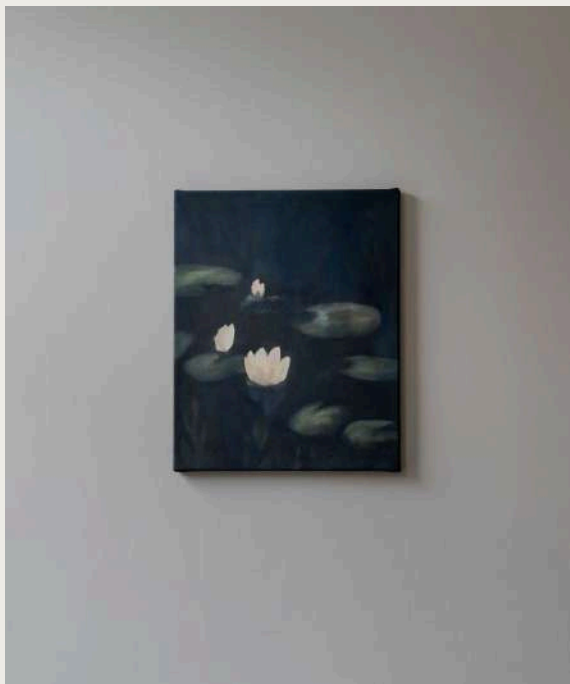
75 x 65 cm  
1590 EUR



**Iris, a Flower of Hope, 2024**  
Oil on canvas, natural pigments

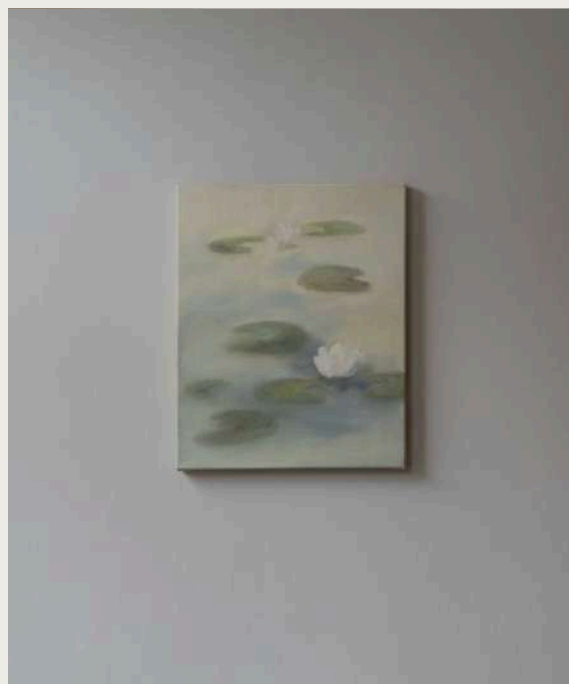
75 x 65 cm  
1590 EUR





**Whispered Hours, 2025**  
Oil on canvas

40 x 45 cm  
1270 EUR



**In the Quiet, on the Surface, 2025**  
Oil on canvas

40 x 45 cm  
2330 EUR



**Hidden in Daylight, 2024**  
Oil on canvas, natural pigments

100 x 135 cm  
2330 EUR

We're doing galleries a little differently. Our floorboards hold centuries of life. As do our walls. Now they hold pieces made by contemporary artists who we think are quite special. We think you will, too

You don't need to know anything about art here, only whether it makes you feel something. Exist within it for a moment. Come as you are, no airs or graces. We feel this is how art should be enjoyed: in a space that feels like home. In a room that encourages belonging.

Whether you're a new collector, seasoned art enthusiast, or simply in search of a piece that suits your style and space, our gallery doors are open to you. Our displays change every three months and are priced to a range of budgets. Whether you're in the market or not, you can always drop by, grab a coffee at our café and enjoy it in front of a painting that moves you.





From our *walls*  
to yours.



# two story

Singel 395 H, Amsterdam,  
Netherlands 1012 WN

Open Tuesday - Sunday

[twostory.nl](http://twostory.nl)  
[@twostory.amsterdam](https://www.instagram.com/twostory.amsterdam)

Design and photography by Studio Aest