

Miniature Thumb Controls Roller Module

Roller Modules are proportional, return-to-center thumb controls, ideally suited for applications where precision counts. This product is available pre-installed in a handle or as a kit of 5 units for servicing or flexible installation in locations like armrests, panels, or control boxes.

Key Features

- **Exceptionally Precise Control:** Smooth, return-to-center control and $\pm 40^\circ$ travel guarantees precision for fine-tuned operation.
- **Maintains Accuracy:** Non-contact hall effect sensing delivers stable performance over more than 5 million cycles.
- **Industry-leading Durability:** IP67 sealed electronics operate reliably in extreme conditions from -40°C to $+85^\circ\text{C}$.
- **Compact & Compatible:** Low-profile design fits into tight operator spaces and integrates easily into Sure Grip handles



Specifications

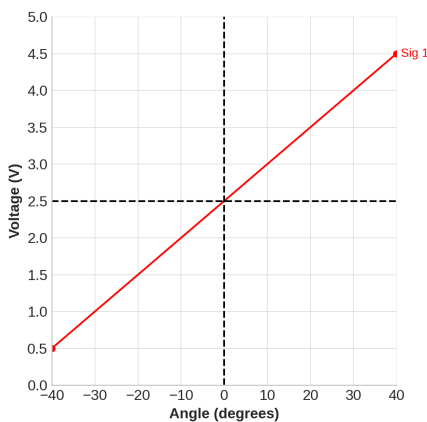
Mechanical

Travel	+/- 40° from center
Life Expectancy	>5 million cycles
Functions	Return-to-center
Operating Temperature	-40°C to $+85^\circ\text{C}$
Sealing	IP67 (electronics)

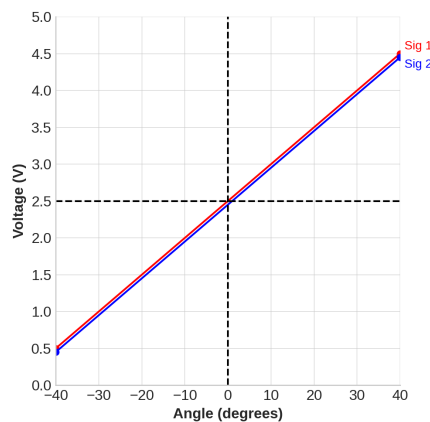
Electrical

Input Power Supply	Minimum	Typical	Maximum	Units
Supply Voltage	4.9	5	5.1	Vdc
Supply Current	-	10	-	mA
Control Output	Minimum	Typical	Maximum	Units
Output Voltage Low	0.45	0.5	0.7	Vdc
Output Voltage Mid	2.3	2.5	2.7	Vdc
Output Voltage High	4.3	4.5	4.55	Vdc

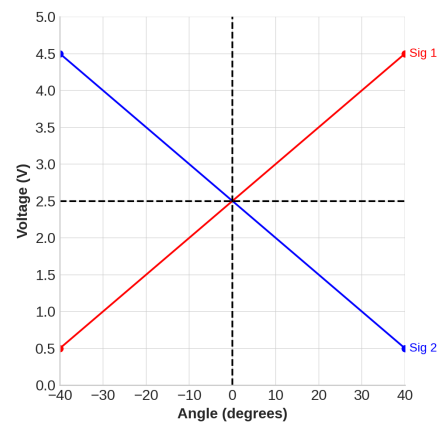
Output Options



Single Output

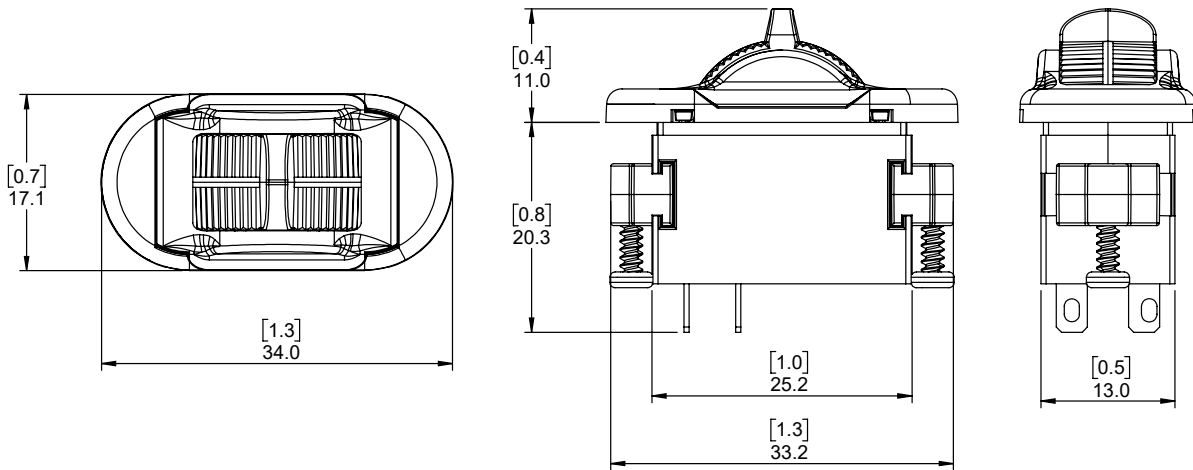


Dual Output (Parallel)



Dual Output (Mirrored)

Dimensions

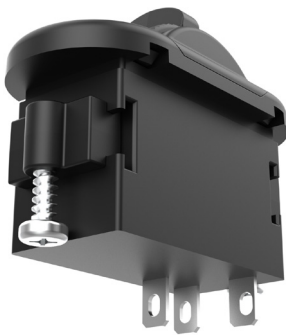


Installation

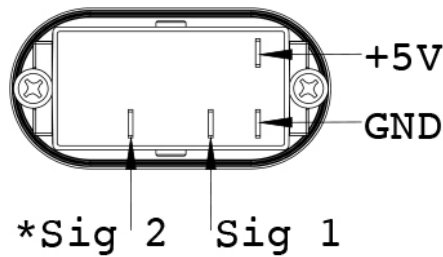
Soldering: Keep iron tip below 350°C (660°F), limit soldering to <5 seconds

Post-Soldering: Avoid applying force for at least 1 minute

Caution: Excess heat or duration can damage the module

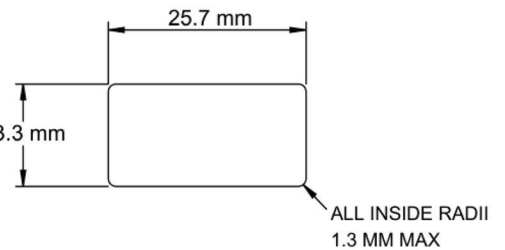


Pinout



*Sig 2 available in dual redundant modules

Cutout



*Maximum panel thickness is 3.2mm

Order Now

See below to order a kit of 5 units or use our handle ordering guides to integrate this into a handle.

Part Number	Description
KIT-00157-A	5 x Single output proportional roller modules
KIT-00158-A	5 x Dual output (parallel outputs) proportional roller modules
KIT-00159-A	5 x Dual output (mirrored outputs) proportional roller modules



1-800-800-1810
 electronicsales@baileyintl.com
 baileyintl.com

