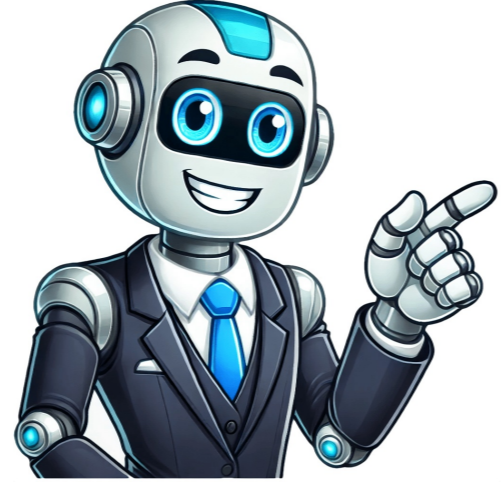


Click to prove
you're human



Salvation army donation value guide

To submit this form, you can either email it to donations@salvationarmy.org or fax it to (555) 123-4567. Physical copies should be mailed to The Salvation Army at 123 Charity Lane in the specified city and state with a zip code. For online submission, go to our website and upload the completed form. You can also find a donation drop-off location near you by using our online tool. If you're not able to make it to one of these locations, we offer a free pickup service for donations such as furniture, vehicles, and more. When you donate items to The Salvation Army, they are sold in our thrift stores and the proceeds go towards funding our Adult Rehabilitation Centers, where people struggling with addiction can get help and a second chance at life. We accept a variety of donated items, including gently used appliances, clothing, furniture, household goods, and more. However, we do have some restrictions on what types of items we can accept due to regulations and other considerations. To find out what specific items are accepted in your area, you should contact your local donation center. In general, we accept items such as: * Gently used appliances like air conditioners, microwaves, and TVs * Vehicles (but please note that not all locations accept all types of vehicles) * Children's clothing and shoes * Unbroken furniture pieces like beds, chairs, and desks * Household goods like bakeware, bedding, and lamps We cannot accept items with mechanical difficulties or missing parts, gas appliances, large console TVs, televisions older than 5 years, built-in appliances, or hazardous materials. To donate to your local Salvation Army Thrift Store, follow these steps: 1. Call the donation center or check their website to confirm hours of operation and accepted items. 2. Schedule a pickup for larger donations like furniture or vehicles. 3. Drop off smaller items during designated hours. 4. Consider scheduling online pickup for vehicle donations in participating states. Remember, your donations will help support our Adult Rehabilitation Centers and provide a tax deduction as allowed by the IRS rules. Donating to The Salvation Army is easy and rewarding. Here's how to do it: Step 3: Get a donation receipt for your taxes, knowing that your contribution has helped our community. Each thrift store sets its own hours based on local needs. You can check the hours of your nearest store by contacting them directly. To schedule a pickup at home, follow these simple steps: 1. Enter your zip code in the "schedule a pick-up" box on our website. 2. Tell us what you're donating and we'll guide you through scheduling a pickup time. 3. Provide your address and let our drivers know any special instructions. If you need to make changes to your donation, visit , enter your last name and phone number, and follow the prompts to modify your pick-up details. The Salvation Army thrift stores aren't for profit. Our sales fund rehabilitation centers that help people overcome addiction. We get our inventory from donations by generous supporters like you. We also appreciate partnerships with local companies who share our mission of doing good in the community. If your company wants to partner with us, start here. To determine the value of your donation, use our Value Guide for Salvation Army Donations. Your qualifying tax-deductible donations will help fund our Adult Rehabilitation program and be resold through our thrift stores across the country. When making a donation, fill out the form indicating what you're donating and its estimated value. You can get a receipt in one of three ways: by dropping off items at a local Salvation Army store or Corps, or by scheduling a pickup and having it done for you. **Donation Receipt Process at Salvation Army Drop-Box** **Drop-Off at Unattended Location:** For a receipt, please attach an **itemized list** to your donation at the unattended Salvation Army drop-box. * **In-Person Receipt Creation:** Visit your local Salvation Army Corps or Family Thrift Store with your itemized list, and they will generate a receipt for you. * **Tax Claim Preparation:** + Itemize donations with **estimated values** alongside each entry. + Consult your **tax advisor** for personalized guidance on claiming these donations on your taxes. * **Scheduled Pickup Service:** If Salvation Army collects your donation, the **truck driver will provide a receipt** at the time of pickup.

Salvation army donation value list. Salvation army donation value guide 2015. Salvation army donation value guide 2020. Salvation army donation value guide printable. Salvation army donation items value guide. Salvation army donation value guide 2024 pdf. Donation values for salvation army. Salvation army donation value guide 2021. Salvation army donation value guide free. Salvation army donation value guide for 2024. Salvation army donation value guide 2022.