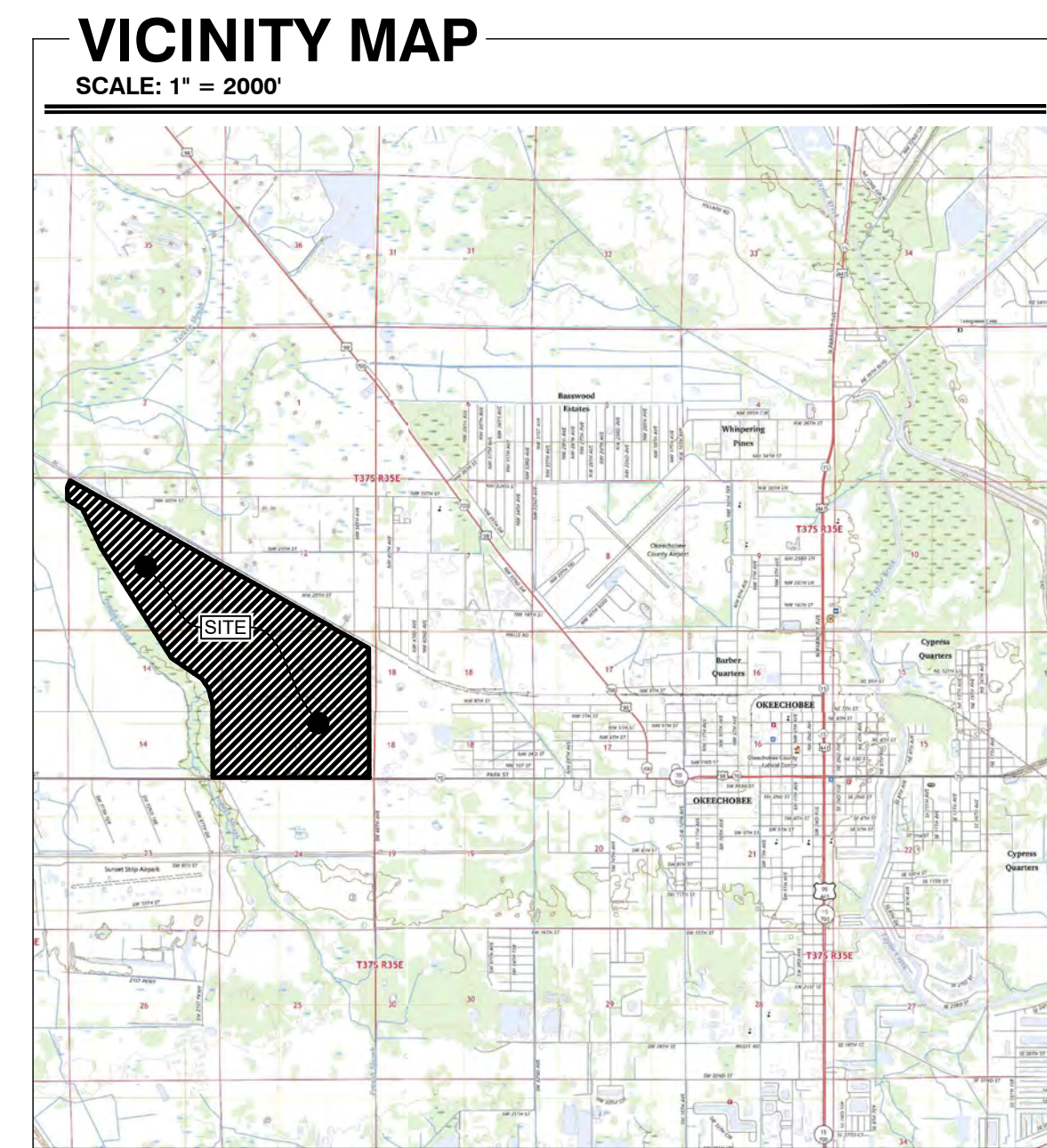


LOT CONCEPT PLAN
FOR
OKEECHOBEE COMMERCE PARK
SITUATE
ALONG THE NORTH SIDE OF STATE ROAD 70
OKEECHOBEE COUNTY, FLORIDA



CIVIL SOLUTIONS
DESIGNS THAT ENDURE, ENGINEERING THAT EXCELS
CHAMBERSBURG, PA 17202



Know what's **below**.
Call before you dig.

REVISIONS

[illegible]

OKEECHOBEE COMMERCE PARK
SITUATED
ALONG THE NORTH SIDE OF STATE ROAD 70
OKEECHOBEE, FLORIDA

CLIENT: RICHARD GRONDIN

PROJECT NO: 25-003
DRAWN BY: ABRAM MYERS
DATE DRAWN: 12.09.2025
CHECKED BY: ABRAM MYERS
DATE CHECKED: 12.09.2025
SCALE: 1" = 500'

SHEET TITLE:

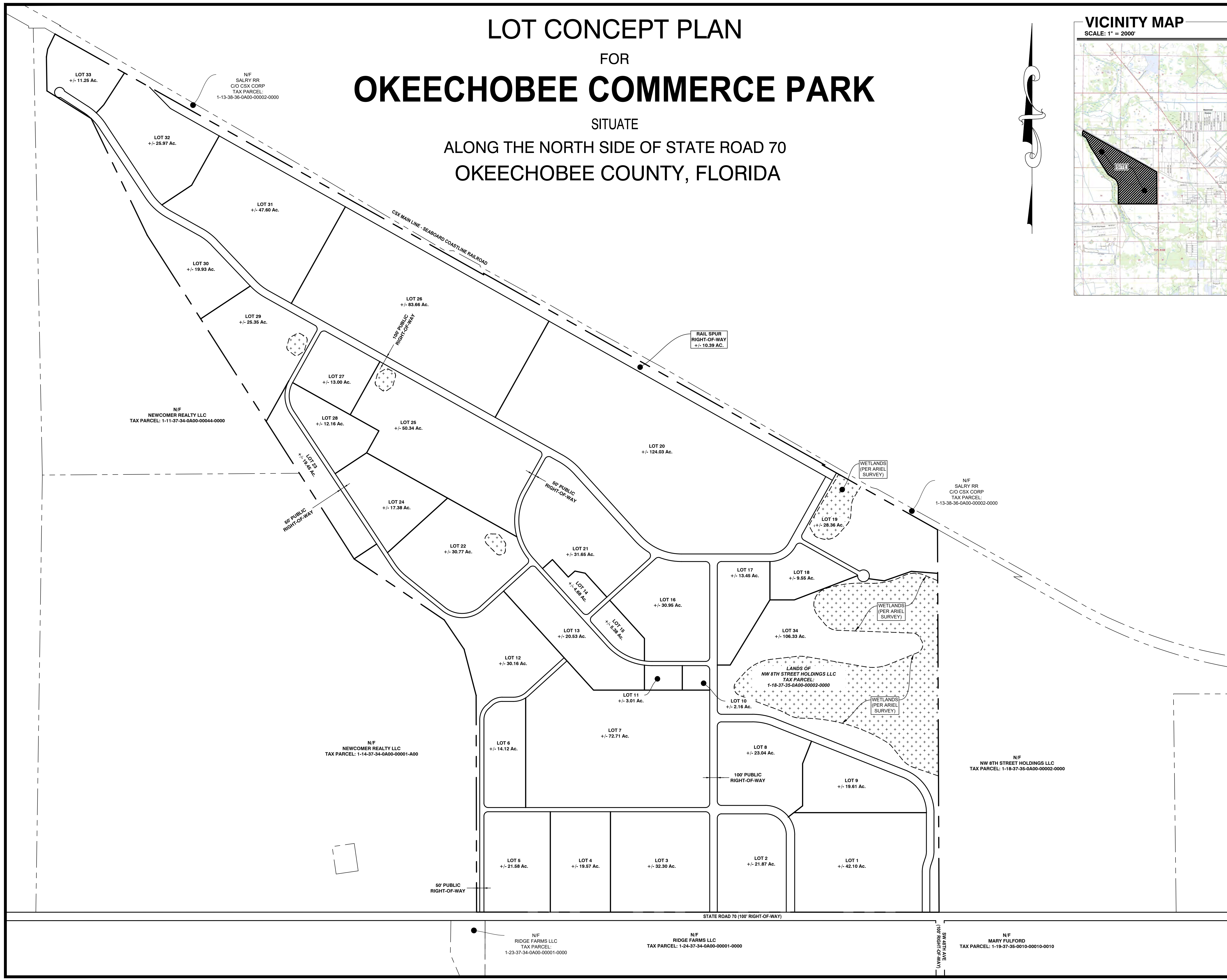
CONCEPT PLAN

SHEET NUMBER:

C-102

SHEET 02 OF 15

LOT TABLE	
LOT #	AREA (AC.)
1	42.10
2	21.87
3	32.30
4	19.57
5	21.58
6	14.12
7	72.71
8	23.04
9	19.61
10	2.16
11	3.01
12	30.16
13	20.53
14	4.68
15	5.38
16	30.95
17	13.45
18	9.55
19	28.36
20	124.03
21	31.65
22	30.77
23	19.45
24	17.38
25	50.34
26	83.66
27	13.00
28	12.16
29	25.35
30	19.93
31	47.60
32	25.97
33	11.25
34	106.33



Okeechobee Commerce Park

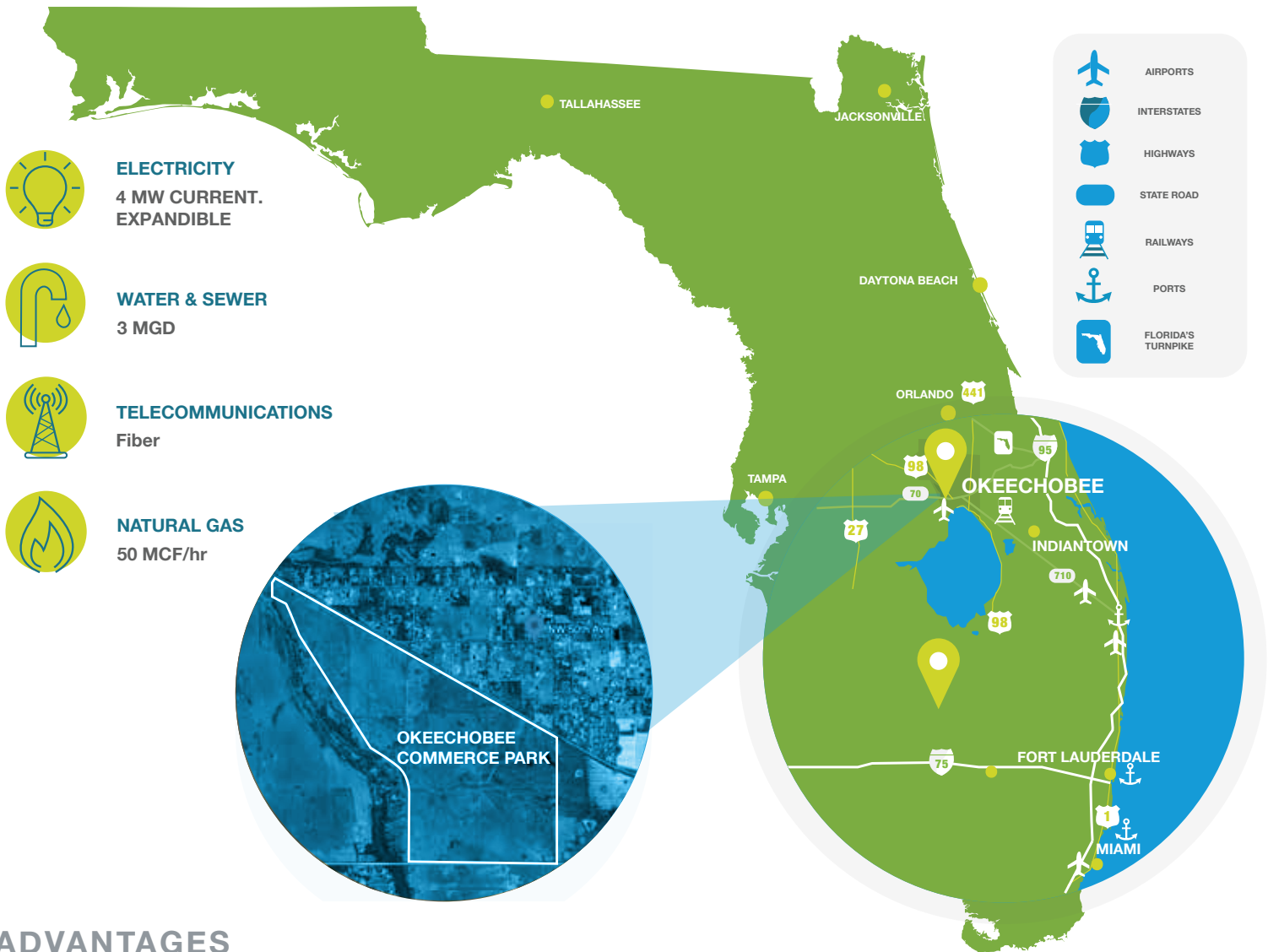
NW 50th Ave

Okeechobee, FL 34974

1,200 acres of master-planned, Industrial-zoned, rail-served real estate for your business to go the distance.



Kaylee King
kaylee@ocedcorp.com



ADVANTAGES



Foreign trade
zone eligibility
for the entire site



No personal
income tax
in Florida



cost of living than the
rest of the state and
7 percent lower than
the national average



CSX railway
frontage for ease
of transportation
across the state



AIRPORTS

Okeechobee County Airport: 4 miles
Palm Beach International Airport: 77 miles
Orlando International Airport: 100 miles
Miami International Airport: 132 miles



TRUCK ACCESS

US-98: Frontage
US-441: 3 miles
US-27: 28 miles
Florida Turnpike:
35 miles
I-95: 37 miles



SEAPORTS

Port of Palm Beach: 64 miles
Port Everglades: 114 miles
PortMiami: 133 miles



RAIL SERVICE

CSX: Frontage

OKEECHOBEE COUNTY

Where Your Business Can Thrive.

Offering easy access to many growing markets, Okeechobee is a flourishing place for business and quality of life. After the workday is done, there's state parks, night skies, birdwatching, and the nearby Atlantic coastline to enjoy for a treasure trove of memories.

OKEECHOBEE COMMERCE PARK

KISSIMMEE PRAIRIE
PRESERVE STATE PARK

PLACID LAKES

FOR
SALE

LAKE OKEECHOBEE

FORT PIERCE

PORT ST. LUCIE

CSX RAILWAY

JW CORBETT WILDLIFE
MANAGEMENT AREA

WEST PALM BEACH

Outdoorsmen have ample opportunity to enjoy alligator, wild hog, turkey, duck, and deer hunting across the county.

Lake Okeechobee, the tenth-largest lake in the U.S., is an angler's dream—teeming with largemouth bass, black crappie, and catfish.

Explore by bike on the 110-mile-long Lake Okeechobee Scenic Trail, by airboat across the open freshwater, or on a guided prairie buggy tour across the state parks.

Astronomers and night-sky enthusiasts will love Kissimmee Prairie Preserve State Park, the first Florida park to be designated as a Dark Sky Park.



Learn more at PoweringFlorida.com
Kaylee King • kaylee@ocedcorp.com

NOT TO SCALE