

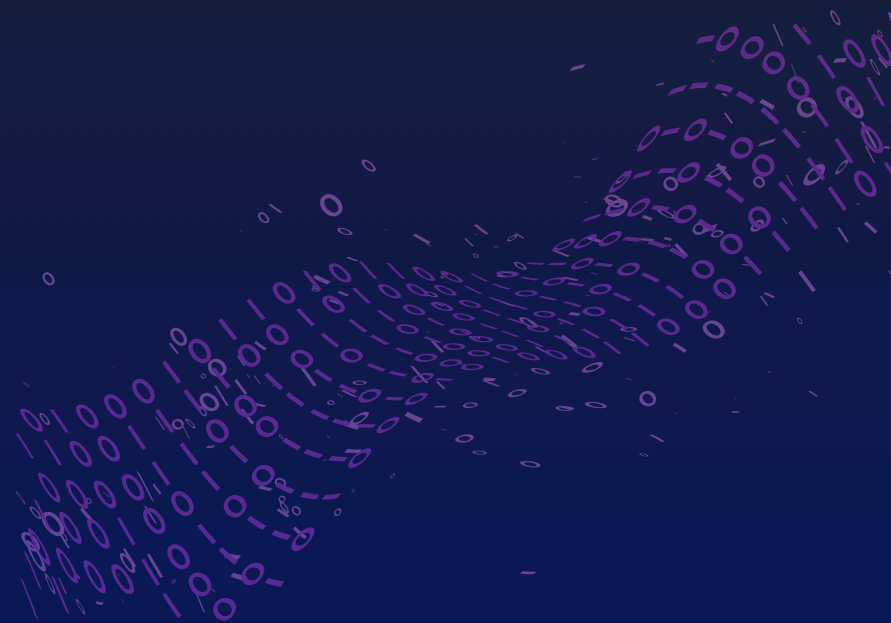


8 Azure Security Pillars That Keep Pharma Supply Chains Resilient

Encryption

The process of converting readable data (plaintext) into an unreadable, coded form (ciphertext) to prevent unauthorized access.

Azure automatically encrypts data at rest and in transit using AES-256 and TLS 1.2+.



RBAC

Role-Based Access Control (RBAC) is a method of assigning permissions based on user roles to enforce “least-privilege” access.

Azure AD-integrated RBAC supports granular role mapping and auditability.



Private Link

A network security feature that enables secure, private connectivity between applications and Azure services without exposing data to public IP networks.

Azure Private Link ensures traffic stays within Microsoft's trusted backbone.



High Availability

A mechanism to ensure consistent system uptime through redundant infrastructure and failover nodes, and support uninterrupted data flow for business continuity.

Azure provides a 99.99% SLA with multi-zone replication for critical workloads.



Disaster Recovery

A technical process focused on quickly restoring a system's core infrastructure and data after a natural or human-induced disaster.

Azure Site Recovery enables multi-region replication and fast restoration.



Zero Trust Security

A security model founded on the principle of ‘never trust, always verify’. Thus, every access should be verified, and every request should be authenticated.

Azure’s Zero Trust architecture uses Conditional Access, Defender, and Policy enforcement.



Threat Intelligence

The practice of collecting and analyzing data about potential cyber threats to help organizations identify, prepare for, and respond to security risks.

Azure's security framework is powered by Microsoft Defender and MSTIC's 65 trillion daily threat signals.



Immutable Audit Trails

A secure, unalterable record of system activities that ensures every action is permanently logged for accountability and compliance.

Azure's immutable storage and append-only logging ensure tamper-proof records.



Is Your Supply Chain Truly Secure?

Go beyond basic security.

