



Hello,

As the financial year draws to a close, many teams find themselves balancing ongoing priorities while preparing for the year ahead. It also offers a natural moment to pause and reflect on how far things have progressed.

In this edition of **#AltiusEdge**, we bring together some of the incremental milestones and learnings that have shaped our journey over the past few months.

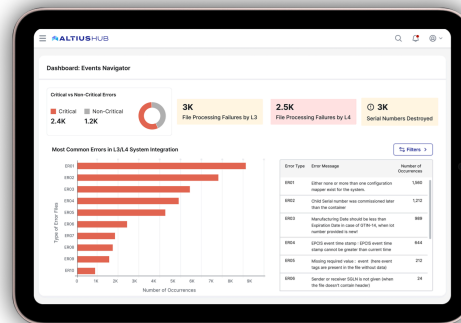
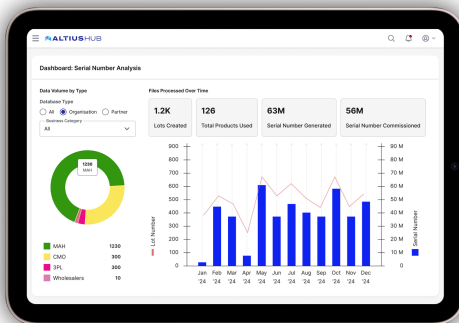
INSIDE ALTIUSHUB: FEATURE SPOTLIGHT

🌟 Operational intelligence for everyday workflows!

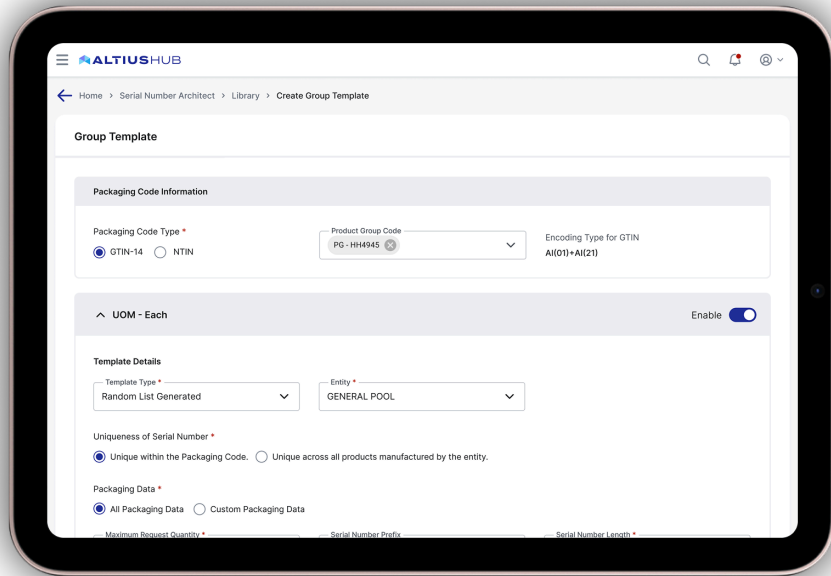
Supply chain traceability operations generate continuous data across production lines, partners, and integrated systems, yet teams often lack a clear view to quickly understand performance or proactively identify issues.

With the introduction of **Dashboards**, AltiusHub provides continuous visibility across traceability operations and system-level events, enabling teams to monitor performance and make informed operational decisions.

👉 *Click on the image to see the full view.*



🌟 Operational efficiency for large-scale serialization operations!



In high-volume production environments, serial number request template setup can quickly become an operational bottleneck. Managing thousands of products, each with multiple GTINs, often requires repetitive template creation, increasing setup time and the likelihood of errors.

AltiusHub's **Group Template for Serial Number Requests** feature enables teams to create serial number request templates across multiple products and packaging levels in a single action, with complete flexibility.

👉 *Click on the image to see the complete video.*

THE COMPLIANCE COMPASS: REGULATORY UPDATES



Egypt has officially begun moving from planning to phased execution, with defined registration timelines and structured rollout expectations now taking shape.

As implementation progresses, early readiness around master data alignment, EPCIS interpretation, and operational coordination will be critical for manufacturers supplying into the market.

We've summarized the key updates and practical implications in our latest breakdown.

👉 *Click on the image to view the post.*

INSIDE ALTIUSHUB: CUSTOMER SPOTLIGHT

Strong client partnerships are built through shared learning and continuous collaboration. We recently hosted a focused **AltiusHub Technical Workshop** with [Hetero](#) team, bringing together product, compliance, and supply chain stakeholders to explore AltiusHub capabilities, discuss multi-country regulatory readiness, CSV considerations, and real-world operational scenarios.



"Sessions like these create alignment early on, helping teams evaluate track & trace readiness, address practical challenges, and move forward with greater clarity."

INSIDE ALTIUSHUB: SECURITY & COMPLIANCE

At AltiusHub, security and compliance are treated as continuous commitments rather than one-time milestones. Over the past two years, we have consistently upheld global

standards, including SOC 2 Type II, ISO 27001, and ISO 9001, supported through our collaboration with [Sprinto](#) to strengthen the protection of serialized data and operational integrity across regulated supply chains.



The AltiusHub Trust Centre reflects this commitment by providing transparent visibility into our information security practices, data protection measures, access controls, and compliance alignment, enabling enterprise customers and regulators to assess our security posture with clarity.

 **Explore our Trust Centre:**
<https://compliance.altiushub.com/>


FROM FOUNDER'S DESK: SIGNALS & SHIFTS

Over the years, I've seen how slow response and resolution cycles in legacy traceability systems gradually become accepted as part of day-to-day operations. Teams learn to work around delays, raise tickets, wait for escalations, and depend on support teams just to understand what their own data is telling them. What often goes unnoticed is that these challenges are rarely about support capacity. They stem from how legacy systems are fundamentally designed to store, handle, and control traceability data.

It matters that we speak about this openly because supply chain traceability today, sits at the centre of operational continuity and regulatory confidence. When access to data or decision-making depends on external intervention, organizations lose the ability to respond independently when it matters most.

Perhaps the real shift the industry needs is to move away from systems that manage compliance on behalf of organizations, toward ones that enable organizations to truly own it.

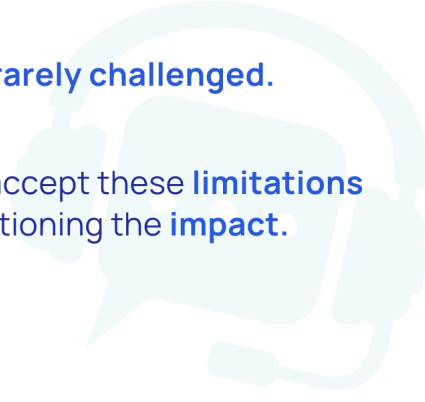
- **Abiram Vijayakumar, Co-Founder**


 *Click on the image to see the complete post.*

Slow response & resolution times are a common frustration in supply-chain traceability.

But they are **rarely challenged**.

Most teams accept these **limitations** without questioning the **impact**.



 **Join the conversation!**

If you have insights on serialization, compliance, or pharma supply chain, we'd love to feature you in the next edition of #AltiusEdge.

Please write to vaishnavi.p@altiushub.com



1st floor, Jyothi Pinnacle, Whitefields, Kondapur, Hyderabad, Telangana 500082.

[Unsubscribe](#) | [Update Preferences](#)