

KiNTO®



CAR GUIDE

KINTO.COM.AU

Contents

How to turn it on	2
How to turn it off	2
Park brake	3
Bonnet & boot	4
Refuelling	6
Connecting Bluetooth	7
Seat adjustment	8
Side mirrors	9
Headlights	9
Windscreen Wipers	10
Climate Control	11
Dynamic Radar Cruise Control	12
If fitted:	
Heated / ventilated seats	15
Wireless charging	16
Panoramic roof	17
Moon roof	17

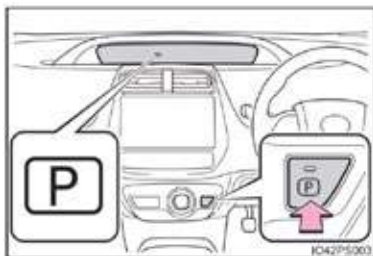
How to turn it on

Many of the KINTO cars use a keyless ignition system, which means you press a button to turn the car on and off.

1. Check the parking brake is engaged and that the transmission is in P (Park)
 2. Firmly press the brake pedal
 3. Firmly press the POWER / START button
 4. Check the "READY" indicator is illuminated on the dashboard display
 5. With the brake pedal depressed, move the transmission to D (Drive) or R (Reverse)
- The car will not move when the "READY" indicator is off
 - If you're in a hybrid model, only the electric engine will start right away, so don't worry if you don't hear anything
 - You cannot move the shift lever out of P unless your foot is on the brake

How to turn it off

1. Stop the car completely
2. With your foot on brake, move the transmission to P (Park)
Prius only - the transmission is put into park by pressing the P button on the dash
3. Firmly press the POWER/STOP button



Prius only.

4. Slowly release the brake pedal and ensure the instrument display is off

Park brake

Automatic

- The handbrake is automatic and will disengage when put in gear and engage when put in P (Park) and the engine turned off.

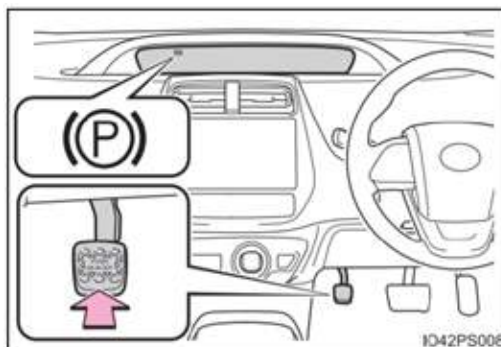
Hand

- The handbrake is a traditional handbrake, located to the left of the driver's seat.



Foot

- The handbrake is a foot brake to the left of the brake pedal. Fully depress the parking brake pedal with your left foot to release and slowly take your foot off the brake to commence driving

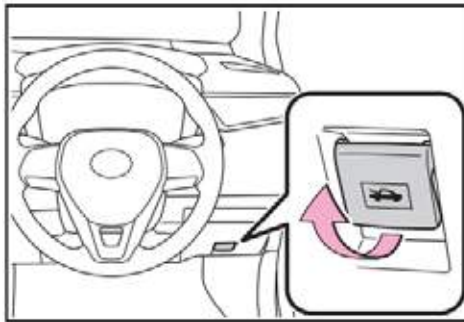


Bonnet & boot

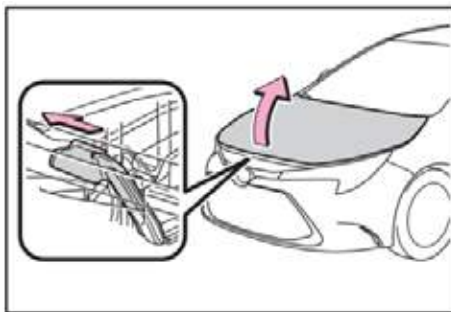
Bonnet Release

In the unlikely event that you need to open the bonnet, you'll find the release lever to the bottom right of the steering wheel.

1. Pull the release lever, the bonnet will pop up slightly



2. Pull the auxiliary catch lever to the left and lift the bonnet

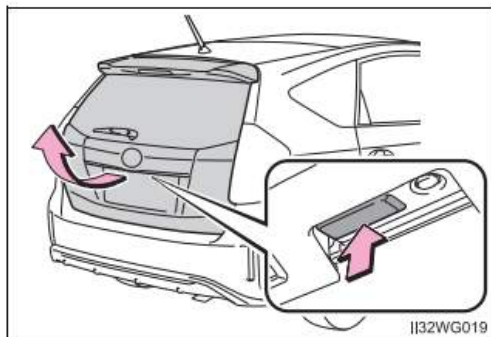
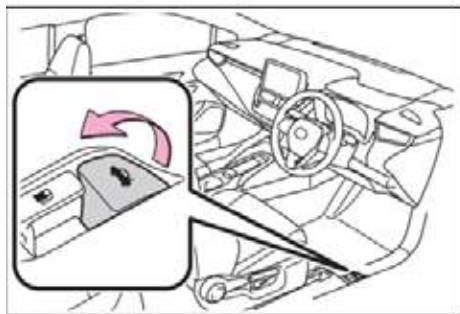
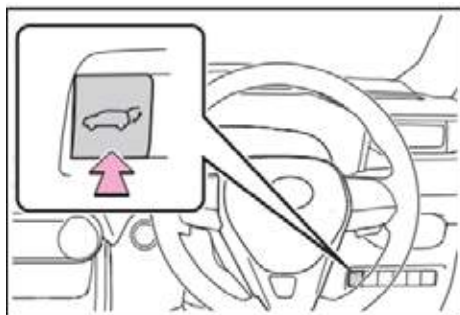


3. Hold the bonnet open by inserting the support rod into the slot
4. When closing the bonnet, ensure the supporting rod is returned to its clip and take extra care to prevent your fingers from being caught

Boot Release

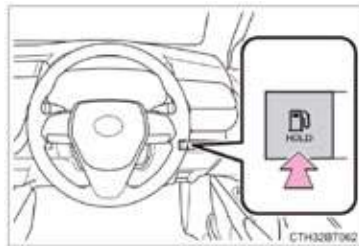
Press the boot release button to the right of the steering wheel, the button underneath the boot lid or pull upward on the lever to open the boot.

NOTE - The car must be unlocked to open the boot



Refuelling

1. Determine the correct fuel for your car by referring to the current booking screen of your KINTO app or to the back of the fuel cap
2. Press the fuel tank release button to the right of the steering wheel or the release lever on the floor to the right of the driver's seat to open the fuel cover
3. Turn the fuel tank cap slowly to open and hang it on the back of the fuel cap door



After refuelling, turn the fuel tank cap until you hear a click. Once the cap is released, it will turn slightly in the opposite direction.

Connecting Bluetooth

1. Turn on Bluetooth on your mobile phone
2. Press the MENU or APPS button on the audio unit
3. Select SETUP
4. Select BLUETOOTH
5. Click ADD
6. When the add device screen appears, search for the device (usually CARMULTIMEDIA) on your Bluetooth device
7. A PIN code won't be required on most devices, otherwise it will display on the audio unit
8. Once pairing is complete, check the screen for a "Bluetooth pairing was successful" message
9. Select OK when the connection status changes from "Connecting..." to "Connected"

Seat adjustment

Power Seat

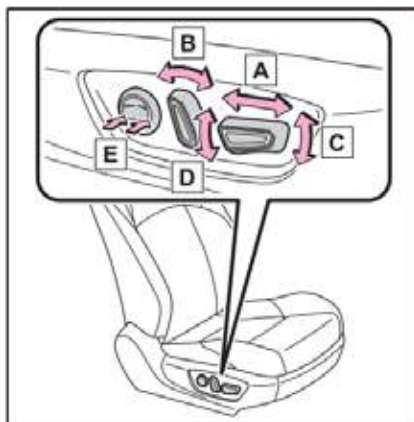
A – Seat position (forward and back)

B – Seat back angle

C – Seat cushion (front) angle

D – Vertical height adjustment

E – Lumbar support



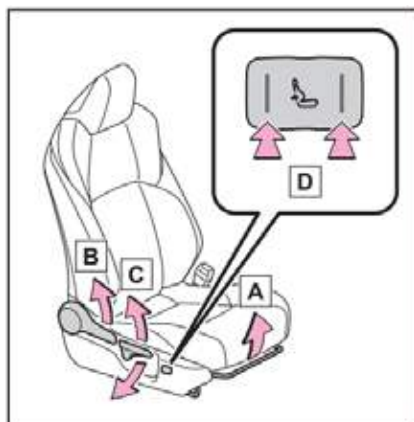
Manual Seat

A – Seat position (forward and back)

B – Seat back angle

C – Vertical height

D – Lumbar support



Side mirrors

- Twist the button or press the switch on the control to the left or right to select the required mirror
- With the mirror selected, push the control left, right up or down to adjust

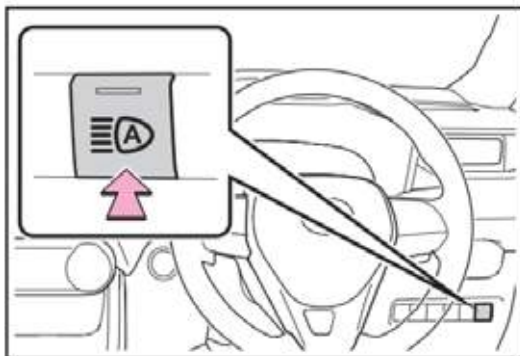
Headlights

Manual

- Twist the outside control on the indicator stalk up once or twice to turn on the park or headlights.
- The inside control turns the fog lights on and off

Auto headlights / Auto high beam

- Twist the outer control on the indicator stalk to Auto, to enable the auto dusk sensing head lights.
- The headlights can be operated manually by twisting the control 1 or 2 times up for park or head lights.
- To enable the auto high beam, press the button on the dash

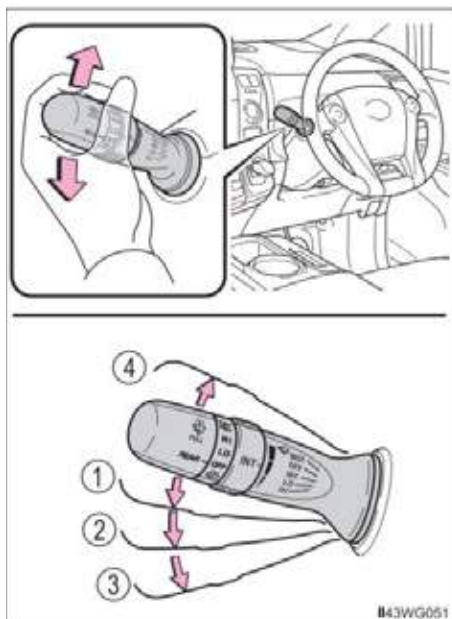


Auto high beam button

- Turn the high beam on by pushing out on the indicator stalk. The high beam will turn on and off automatically when a difference in light is detected in oncoming traffic.

Windscreen Wipers

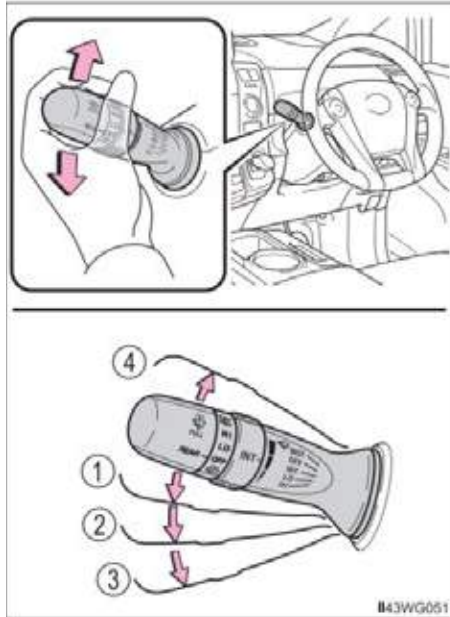
Manual



1. Intermittent operation. Turn the switch ring to adjust the interval
2. Low speed
3. High Speed
4. Temporary operation

Pull the lever toward you to operate the windscreen washer

Rain sensing wipers



1. AUTO – Rain sensing operation. Turn the switch ring to adjust the sensor sensitivity
2. Low speed
3. High Speed
4. Temporary operation

Pull the lever toward you to operate the windscreen washer

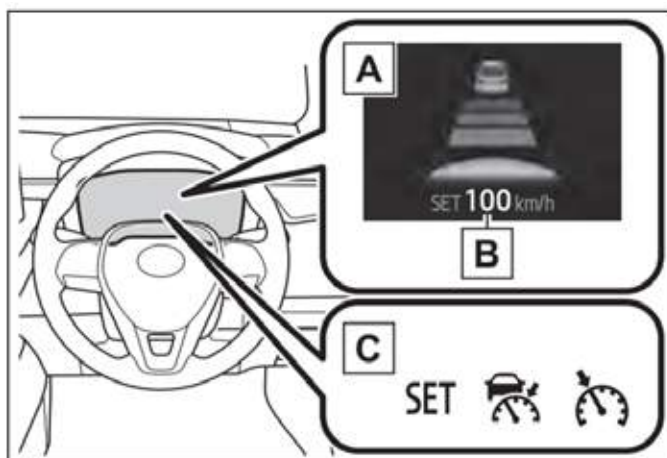
Climate Control

- All vehicles have climate control
- Push the temperature button up and down, or turn the control knob left or right to set the desired temperature
- The auto control will automatically adjust the fan speed and vent position to keep the desired temperature

Dynamic Radar Cruise Control

In vehicle-to-vehicle distance control mode, the vehicle automatically accelerates, decelerates and stops to match the speed changes of the vehicle in front. In constant speed control mode, the vehicle runs at a fixed speed.

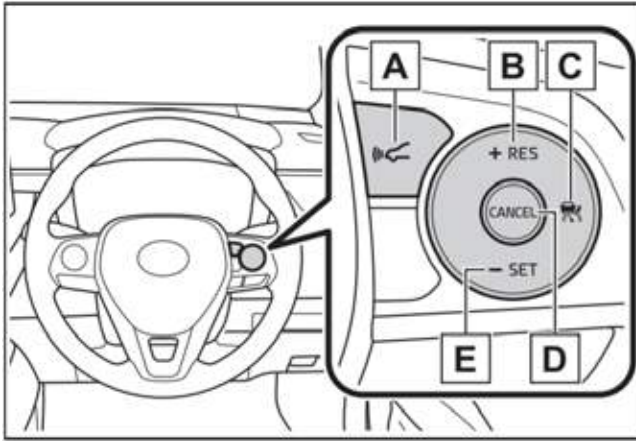
Steering wheel mounted



A Multi-information display

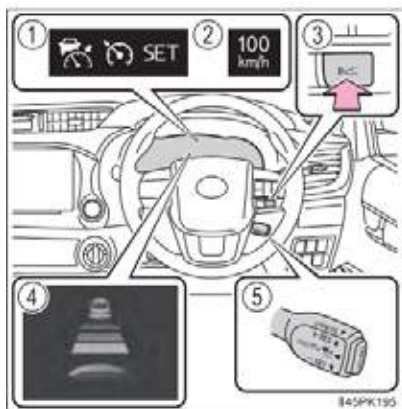
B Set speed

C Indicators

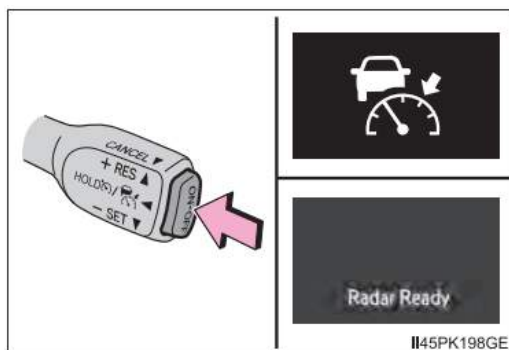


- A Vehicle to vehicle distance switch. Pressing this switch changes the distance maintained to the vehicle in front. It is set automatically to long when the power switch is turned on.
- B Resume switch / increase speed
- C Cruise control main switch. Press once to activate the dynamic radar cruise control. Press and hold for 1.5 seconds or more to activate constant speed control mode.
- D Cancel switch
- E Set switch / decrease speed. Once at the desired speed, press this button to set the speed.

Stalk mounted



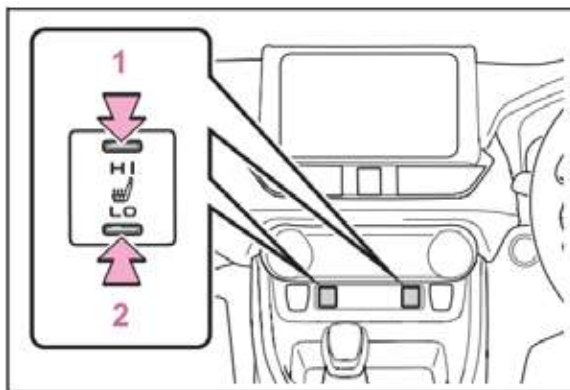
1. Indicators
2. Set speed
3. Vehicle to Vehicle distance switch
4. Multi-information display
5. Cruise control switch



Press the On-Off button to activate the dynamic cruise control. Press and hold for 1.5 seconds or more to activate constant speed control mode. All other controls work as per instructions for steering wheel mounted control.

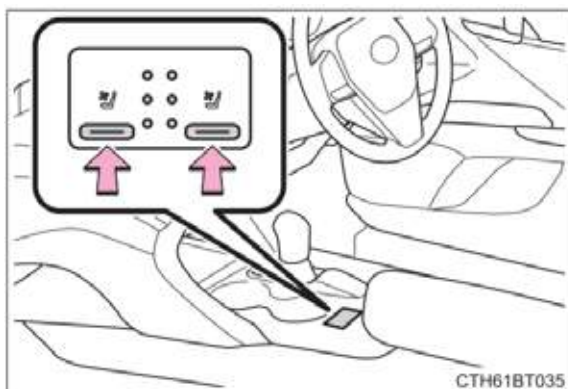
Heated / ventilated seats

Heated seats



- The front seats are heated
- Can be set to Hi, Low or Off

Ventilated seats

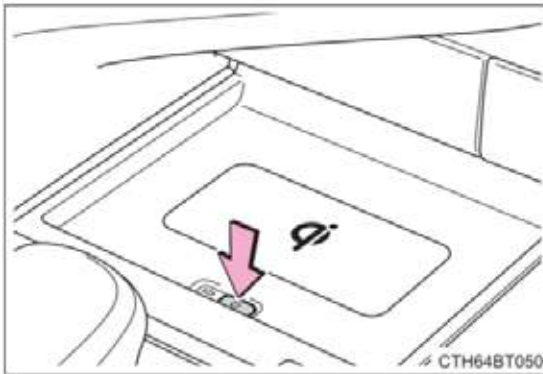


- Using the air-conditioning system, air is pushed through the seats.
- Can be set to Hi, Med, Low or Off

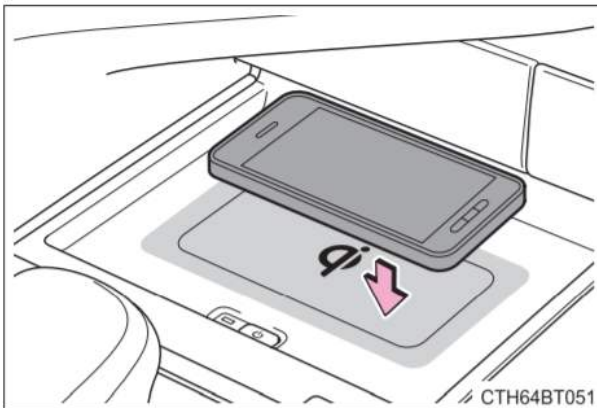
Wireless charging

If you have a device that supports wireless charging, you will be able to use the wireless charger

- Press the power supply switch of the wireless charger



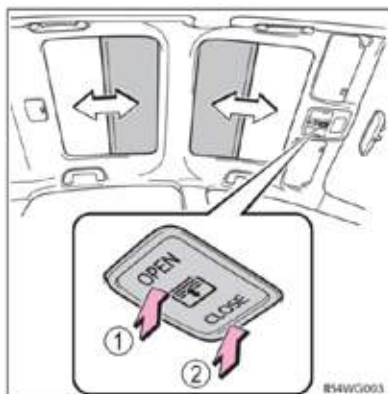
- Place your device on the charging area with its charging surface facing down and your device should begin charging



- If your device is not compatible, there is a USB charging outlet in front of the centre console.

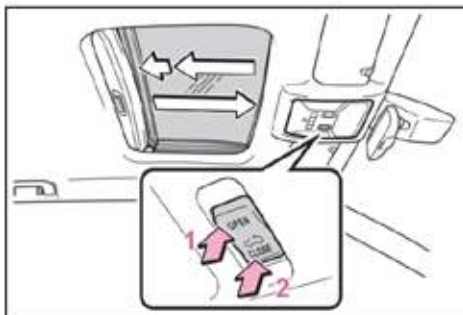
Panoramic roof

Use the overhead switch to open /close the panoramic roof shades

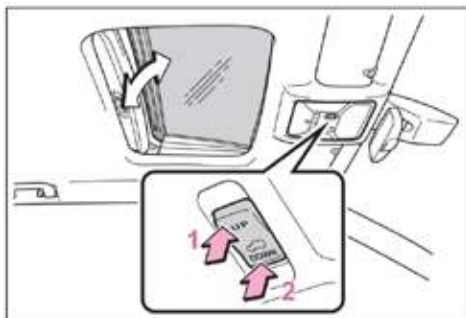


Moon Roof

Use the overhead switches to open and close the moon roof and tilt it up and down.



1. Opens the moon roof. The moon roof stops slightly before the fully open position to reduce wind noise. Press the switch again to fully open it.
2. Closes the moon roof



1. Tilts the moon roof up
2. Tilts the moon roof down

KiNTO®



Move Like Magic

KINTO.COM.AU
1300 4KINTO