

# Beat Asthma Friendly Schools Accreditation.



Child Health and  
Wellbeing Network  
North East and North Cumbria

Carol Barwick

Clare Caygill

Nichola Jackson

**Community Asthma Advisors**

**North East and North Cumbria's Child Health and  
Wellbeing Network**

*Feel free to Tweet throughout @EveryChildNENC and join our Network here via  
the QR code*



Follow us @EveryChildNENC



# Asthma



**Asthma is the most common long term medical condition in children and young people.**

**Around 1 in 11 children live with asthma.**

- Outcomes for children and young people living in deprived areas are worse.
- The UK has one of the highest emergency admission rates for asthma in Europe.
- There are over 25,000 emergency hospital admissions for asthma amongst children a year in the UK.
- Asthma is a main contributor to school days lost.



(National bundle of care for children and young people with asthma September 2021. )



# Effects of Asthma on Education



- Children with persistent, uncontrolled or severe asthma are more likely to miss school, compared to children with mild asthma.
- Children who have been in hospital for asthma had more time off school and this is the likely cause of their poorer educational attainment particularly KS1
- Research shows having a diagnosis of asthma is a risk factor in dropping a grade between mock and final exams.
- Uncontrolled asthma can lead to decrease academic performance
- Every September, more children are rushed to hospital due to their asthma than at any other time of the year.
- Research studies suggest that asthma is responsible for up to 18% of school absences, with evidence improved asthma control improves school attendance and performance.
- A Survey found that 86% of children with asthma have at some time been without an inhaler at school.



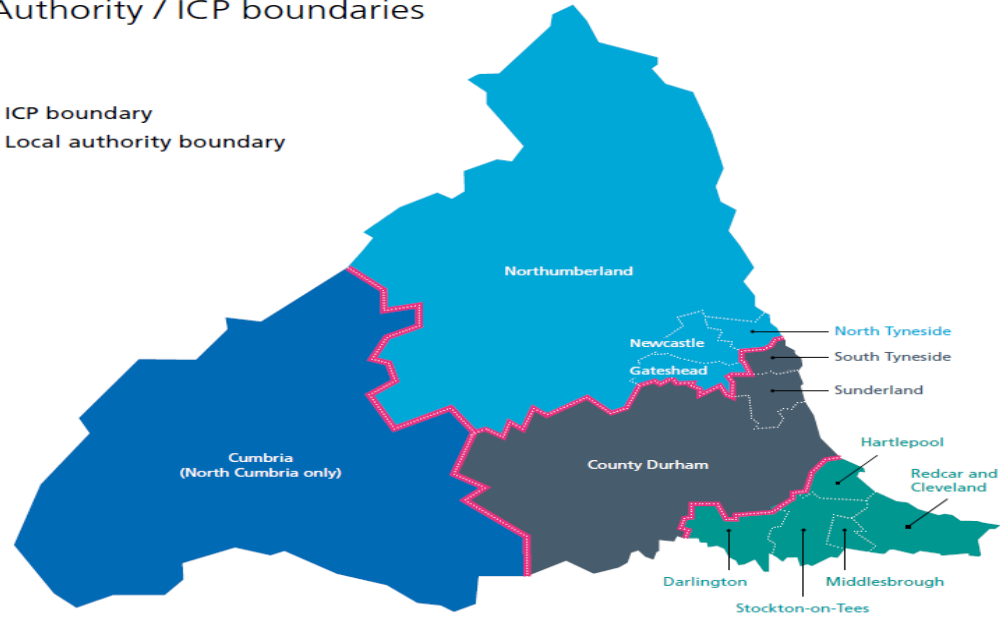
# North East and North Cumbria Integrated Care System



## North East and North Cumbria

Local Authority / ICP boundaries

- ICP boundary
- Local authority boundary



North Cumbria ICP	
Population:	324,000
1 CCG:	North Cumbria
Primary Care Networks:	8
1 FT:	North Cumbria Integrated Care NHS Foundation Trust (NCIC)
1 Council Area:	Cumbria County Council (with 4 District Councils)
	North West Ambulance Service

### NENC ICS-wide

- North East Ambulance Service FT** covers: North of Tyne and Gateshead ICP; Durham, South Tyneside and Sunderland ICP; Tees Valley South ICP
- CNTW Mental Health FT** covers: North Cumbria ICP; North of Tyne and Gateshead ICP; plus part of South Tyneside and Sunderland ICP
- TEVV Mental Health FT** covers: Tees Valley ICP; plus part of South Tyneside and Sunderland ICP
- Newcastle upon Tyne Hospital FT:** provider of highly specialised and specialised national and regional services (including transplant, paediatric specialisms and major trauma)
- South Tees Hospitals FT:** provider of highly specialised north of England and regional services (including cardiothoracic, spinal, cochlear implant, neurosciences, gynaecology, urology and major trauma)

### North of Tyne and Gateshead ICP

Population:	1.079M
3 CCGs:	Northumberland, North Tyneside, Newcastle Gateshead
Primary Care Networks:	22
3 FTs:	Northumbria, Newcastle, Gateshead
4 Council Areas:	Northumberland, North Tyneside, Newcastle, Gateshead

### Durham, South Tyneside and Sunderland ICP

Population:	997,000
3 CCGs:	South Tyneside, Sunderland, County Durham
Primary Care Networks:	22
2 FTs:	South Tyneside & Sunderland, County Durham and Darlington
3 Council Areas:	South Tyneside, Sunderland, County Durham

### Tees Valley ICP

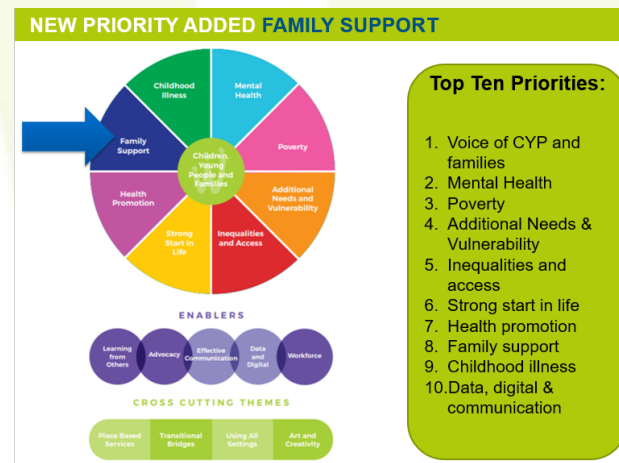
Population:	701,000
1 CCG:	Tees Valley
Primary Care Networks:	14
3 FTs:	County Durham and Darlington, North Tees & Hartlepool, South Tees
5 Council Areas:	Hartlepool, Stockton on Tees, Darlington, Middlesbrough, Redcar & Cleveland



## NHS England and NHS Improvement ambition is to reduce avoidable harm to children and young people from Asthma and improve the quality of life.

- Taking a whole system approach to asthma management.
- Addressing environmental triggers
- Education programme
- Personalised care ( individual asthma plan/known as PAAP)
- Effective preventable medicine
- Improved accuracy of diagnosis

(National bundle of care for children and young people with asthma September 2021. )



# CYP Transformation Programme : 10 Key Priority Workstreams



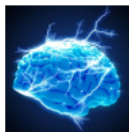
The CYP Transformation Programme will **lead change** to **integrate** and **improve** services that **include CYP** through:

1. **Integrating services** for children and young people by working with local health to develop and test integrated models of care.
2. **Improving the quality of care** for CYP with long term conditions like asthma, epilepsy, diabetes and complications from obesity.
3. **Including children and young people in national policy and programme development** to ensure that services are designed to meet the needs of CYP.



The ten key areas of work for the CYP Transformation programme are as follows:

- 1 – Integration of Services within Health and Care, led by local systems
- 2 – Identifying and protecting the most vulnerable children and young people
- 3 – Evaluating paediatricians working in local 111 providers
- 4 – Developing data and informatics capacity to monitor and understand the state of child health across the country
- 5 – Spotting the deteriorating child
- 6 – Working across NHSE/I to develop a joint approach to transition and 0-25 model of care
- 7 – Launch an obesity pilot study to develop the evidence base relating to complications associated with severe obesity
- 8 – **Develop a national bundle to improve asthma outcomes**
- 9 – Improvements in epilepsy, diabetes and other long-term conditions
- 10 – Keeping children well will focus on speech language and communication needs



**Join our Journey**

North East and North Cumbria



## The National Bundle of Care will focus on improving these components of the asthma pathway



### Considerations for components

- Parental smoking
- Housing
- Air Pollution

- Primary care
- Secondary Care
- Tertiary Care

- Self management
- Primary Care & 111
- Secondary Care

- Self management
- Apps/peakflow
- Primary Care & 111
- Secondary Care
- PICU

- Service Specification
- New Therapies
- Research & Development

### Cross-cutting themes:

- Asthma competencies, training and education needs
  - Data and digital elements



# Asthma & Allergy/ Anaphylaxis Education Survey results January 2022



- 198 responses (from approximately 1440 schools) all ICS area contributed.
- The survey was completed by various school team members.
- Half the results were from Primary Schools.
- Over 70 schools said they did not have an asthma policy .
- 69 Schools did not have a asthma lead.
- 111 schools would like further training.
- 125 schools would like to explore the possibility of being a asthma friendly school.







# Beat Asthma Friendly Schools Criteria




## Beat Asthma Friendly School Accreditation




North East and North Cumbria's  
Child Health & Wellbeing Network





Local authority boundary

Northumberland  
Newcastle  
Gateshead  
Durham  
North Tyneside  
South Tyneside  
Rendham  
Cleveland  
Middlesbrough  
Stockton-on-Tees  
Whitby  
North Cumbria  
Carlisle





Asthma friendly  
schools logo



## School Asthma Policy

School name \_\_\_\_\_

Head Teacher/Principal \_\_\_\_\_

Asthma Champion/ Lead \_\_\_\_\_

School nursing team contact number \_\_\_\_\_

Date \_\_\_\_\_

Policy review date \_\_\_\_\_

*As a school, we recognise that asthma is a serious, but controllable condition. The school welcomes all children/ young people with asthma and aims to support these children in participating fully in everyday school life. School will take on a whole school approach to Asthma to support the children/ young people. We aim to actively involve parent/ carers/ children/ young people in the management of asthma within school.*



# Beat Asthma Friendly Schools Accreditation



Appendix 5 Beat asthma friendly school checklist accreditation



		Tick once completed
<b>School Asthma policy</b>	Awareness of -Supporting Pupils in school with medical condition (Department for Education 2015) available for all staff to read and to use as guidance when developing policies.	
	Awareness of -Guidance on the use of Emergency Salbutamol Inhalers in Schools (Department of Health, Sept 2014).	
	School Beat asthma policy in place, developed using guidance from above and updated regularly – all staff to be made aware of the policy and where to access it.	
	System in place to identify CYP who have frequent absences from school due to asthma.	
<b>Asthma Register</b>	Have a named individual asthma champion or leads	
	Ensure school asthma register in place and updated regularly. Must state name and date of birth of CYP.	
	Ensure that any opt out consents are documented for emergency inhalers/spacers.	
	Register available to all staff – suggest displaying in school office/staff room with a photo board	
	Ensure each child has an individual healthcare plan (IHCP) completed. School asthma care detailed on the IHCP and supported where needed with a specific asthma management plan PAAP.	
<b>Emergency Inhaler kits</b>	Suggest minimum of 3 emergency inhaler kits are purchased to keep in school conveniently located in key	

<b>To use if CYP own not available</b>	areas. Can only be used for pupils who have a diagnosis of asthma or have been prescribed a salbutamol inhaler with the exception where parents have submitted the opt out consent. An emergency kit should be taken out of school for offsite activities/residential trips	
<b>Emergency Kit content</b>	Each kit should consist of: Asthma register 1 large volume spacer device 1 salbutamol 100mcgs per puff inhaler Information leaflet on how to administer Asthma attack flow chart Record of inhaler use. Letter template to send to the parent informing them that the emergency inhaler/spacer has been used	
<b>Medications</b>	Asthma medication is provided by the parent for the school use with instructions of when and how to use, in keeping with their IHCP/PAAP.	
	The use of reliever medication must be recorded, and parents informed if used outside of the pupil's management plan	
	A system is in place to check the expiry dates of any medication and a system to replace when expired or almost empty	
	School staff and CYP know where their inhaler and spacer are kept – must be always accessible	
	Inhalers should be kept in a cool environment	



# Beat Asthma Friendly Schools Accreditation (contd)



	If using a metered dose inhaler ("puffer" type), a spacer device must also be provided by the parent.	
	Medication must be clearly labelled with a pharmacy label displaying name/dose/instructions.	
<b>CYP that self-manage</b>	If a CYP carries their own inhaler as part of their IHCP, a spacer and metered dose inhaler should be available for them to use in school – provided by the parent	
	Parents should be informed if a CYP appears to be using their reliever inhaler more frequently than usual in school.	
	Encourage CYP who self-manage to carry a copy of their PAAP in their school personal planner.	
<b>Pollution</b>	Evidence of awareness within school. Triggers Outdoor/Indoor pollution Journey to school Smoke free site <a href="#">Resource -Beat asthma website /reference list</a> Please give 3 examples	
<b>Whole school approach</b>	Evidence of involvement of Parents /guardian -sharing information /update/opinions Give examples of evidence	
	CYP-Asthma ambassadors /children's views on asthma in	

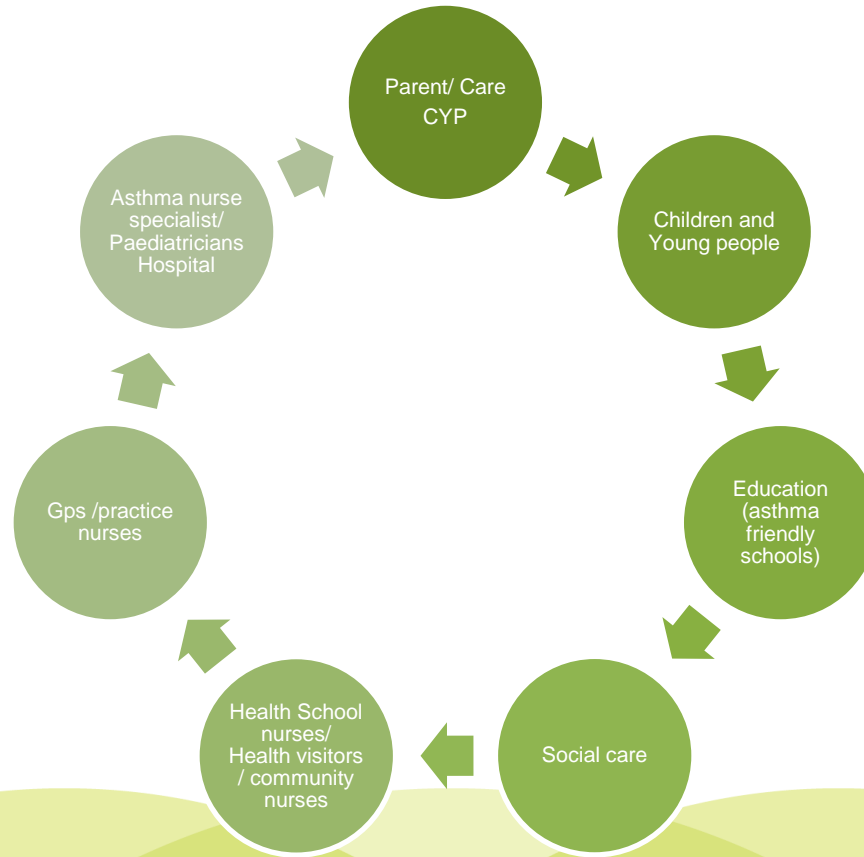
	school. Give examples of evidence	
<b>Staff Training</b>	All school staff complete online Asthma awareness session then biannually. <a href="https://www.educationforhealth.org/course/supporting-children-and-young-peoples-health-improving-asthma-care-together/">https://www.educationforhealth.org/course/supporting-children-and-young-peoples-health-improving-asthma-care-together/</a>	
	How do I manage a CYP having an asthma attack flow chart displayed in school – see appendix	
	Staff administering inhalers should be knowledgeable of the correct technique Information available on inhaler devices and how to use <a href="https://www.beatasthma.co.uk/video-section">https://www.beatasthma.co.uk/video-section</a>	

Date completed

Signature



# Who will be Involved



# Asthma Awareness Sessions

Individuals and professionals will be divided into to different Tiers for awareness sessions.

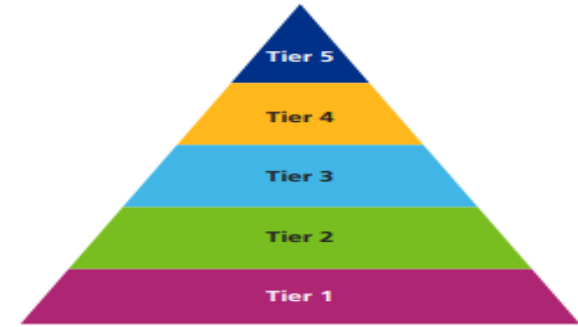
**Tier 1** session includes a 45 minutes online session with multiple choice question to check the individuals knowledge and understanding. This training is free to complete.

**Tier 1** Social care, housing support officers, teaching staff and leaders of children's clubs (cubs, sports, after school clubs, children's centre staff)

Different tiers will have different requirements for the training/ awareness required.

Education awareness session link **Tier 1**

<https://www.educationforhealth.org/course/supporting-children-and-young-peoples-health-improving-asthma-care-together/>



Individuals should look at their own role and choose the tier most appropriate to the care they deliver.

It is everyone's responsibility to ensure good asthma care for children and young people with asthma. One successful contact with a well-trained professional may be the contact that makes the difference.



# Next Steps for Beat Asthma Friendly Schools



- Task and Finish group meeting 19/07/22 ✓
- Regional Beat asthma friendly schools policy uniformity across the whole ICS area
- Beat asthma friendly schools pilot Primary whole ICS, Secondary Gateshead area from September 2022
- Review pilot and adapt as needed.
- Develop timeline following Beat asthma friendly school pilot to roll out to all ICS areas.



# Any Questions ?



# Thank You

**Please help us to improve  
asthma care for children and  
young people.**



Asthma friendly schools logo



# Resources/ References



<https://www.england.nhs.uk/publication/national-bundle-of-care-for...>

- [National bundle of care for children and young people with asthma](#)
- [National bundle of care for children and young people with asthma: resource pack](#)
- Beat Asthma <https://www.beatasthma.co.uk>
- NICE guidance (2017)

<https://wwwAsthma + Lung UK>

<https://www.blf.org.uk/evidence.nhs.uk/search?q=ASTHma+guidelines+in+children>

- BTS Sign (2019)

<https://www.brit-thoracic.org.uk/document-library/guidelines/asthma/...>

[National-Capabilities-Framework.pdf \(e-lfh.org.uk\)](#)

- Healthier together

[Home :: Healthier Together \(what0-18.nhs.uk\)](#)

- Asthma and Lung UK
- [Asthma + Lung UK \(blf.org.uk\)](#)





# Thank you and stay in touch



Please follow, share and retweet relevant work so that we can continue to share good practice across the region at the child health and wellbeing network handle @EveryChildNENC

Visit our website - <https://nhsjoinourjourney.org.uk/what-we-are-doing/priorities/optimising-health-services/child-health-and-wellbeing-network/>

Please encourage colleagues from all areas of the child health and Wellbeing Network to register with [england.northernchildnetwork@nhs.net](mailto:england.northernchildnetwork@nhs.net) so they are included in our communications and feed into the workplan projects that they are interested in.

