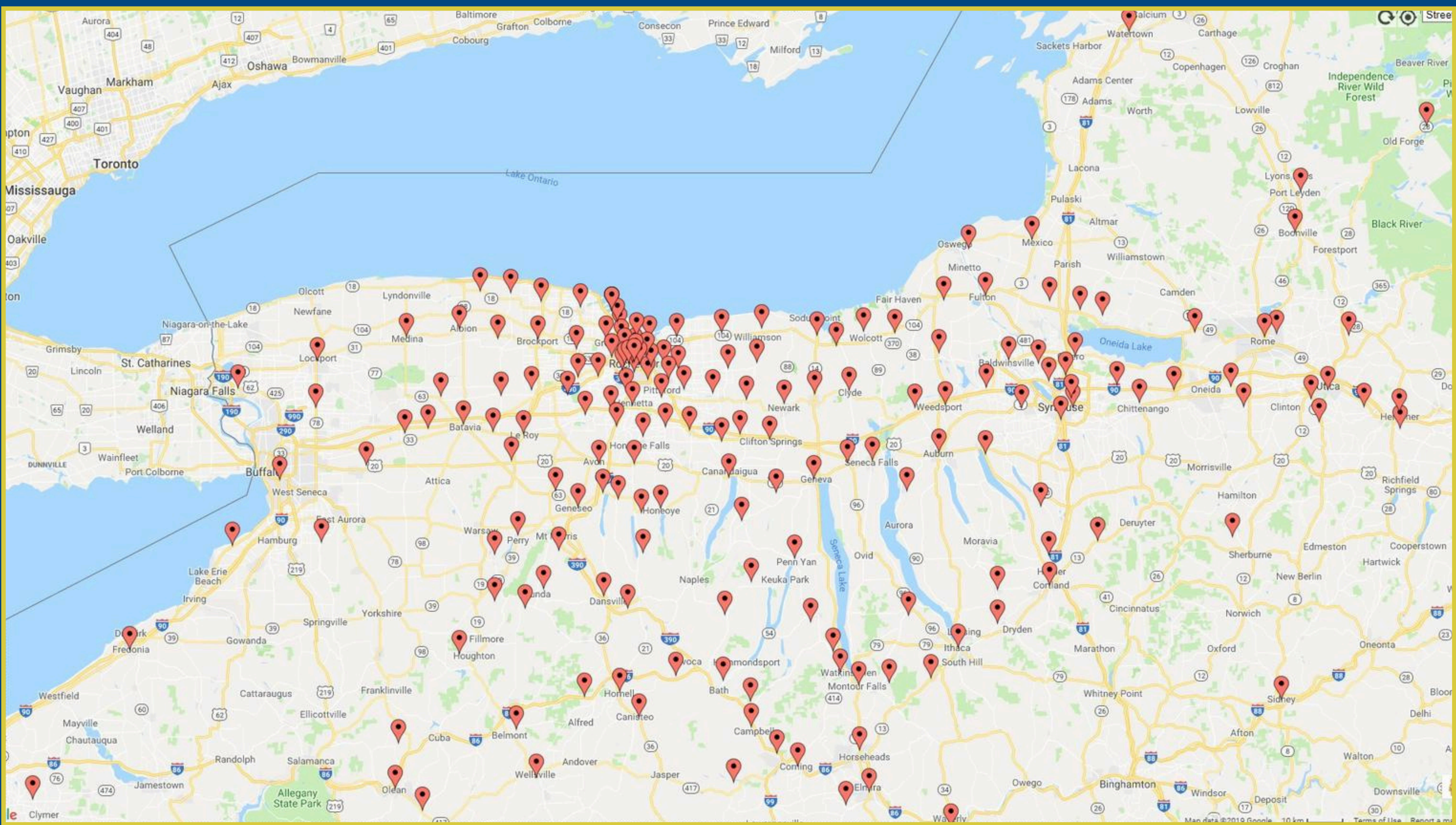


# INTEGRATION OF DENTAL SERVICES WITHIN MEDICAL CARE

Presented By: Dr. Mary Li Javier and Dr. Adela Planerova  
Eastman Institute for Oral Health University of Rochester



Service Area Coverage Based on Patient ZIP Codes

## CARE GAPS FOR INDIVIDUALS WITH INTELLECTUAL AND DEVELOPMENTAL DISABILITIES (IDD)

Individuals with intellectual and developmental disabilities (IDD) face significant challenges in accessing coordinated healthcare, especially dental care. While children with IDD often benefit from interdisciplinary care teams, this support typically ends at adulthood.

As adults, they are frequently left to navigate complex healthcare systems on their own, often acting as the main communicators between providers. This fragmented care can lead to unmet needs and poorer health outcomes.

Oral health is a critical, but often overlooked, component of overall health. Integrating dental and medical care in transitional planning is essential to ensure continuity, reduce disparities, and improve quality of life for people with IDD.

## MEETINGS CONDUCTED AT CCC

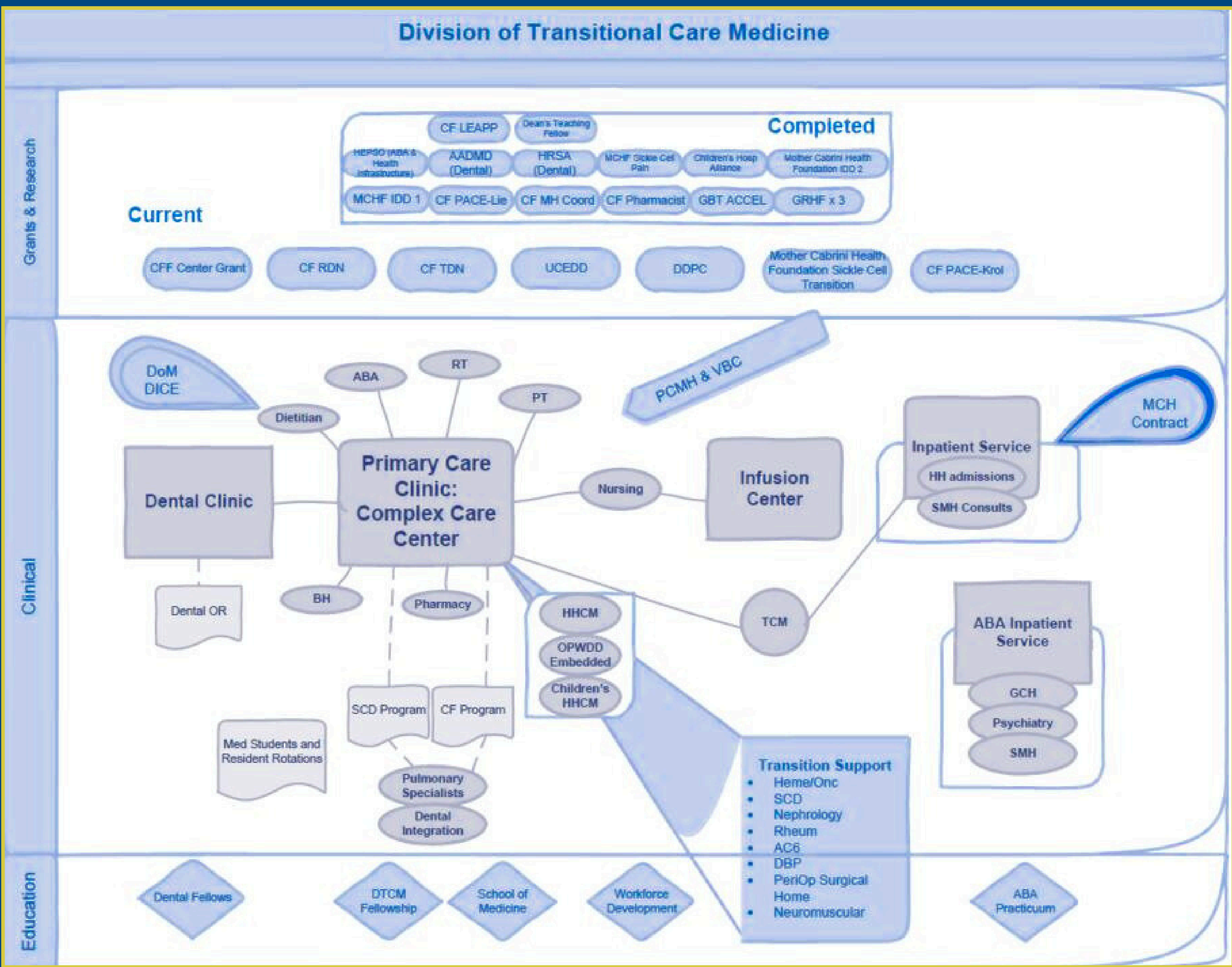


- Monthly:**
  - Education by each specialty (30min)
  - Updates and changes about clinic workflows
- Weekly:**
  - All team meeting (1hr)
  - New patients review for upcoming week (30min)
  - Interdisciplinary rounds (1hr)
- Daily:**
  - Huddles prior AM/PM clinic start (30 min x 2/day)
  - Medical-dental consultations

## INTEGRATED TRANSITIONAL CARE

Patients who require integrated care can benefit from the establishment of a transitional care department. The integrated approach creates a system where all the patient's providers can effectively communicate, creating an environment for optimal patient care. The positive outcomes from this integrated care extend to the patients, providers, and trainees.

We highlight an example of an effective care model that promotes collaboration across disciplines to improve outcomes and training experiences alike. Developing structured workflows is key to ensuring successful, sustainable teamwork.



## SUMMARY AND IMPLICATIONS

**Summary:** The Complex Care Center shows promising ways to integrate dental and other medical services. However, literature describes that the overall atmosphere of the clinical environments is not satisfactory, and in most studies, it is reported that the conditions of the interdisciplinary collaboration are poor. More research in this area is needed.

**Implications:** Daily operations, workflow, and experience from the Complex Care Center can be transferred and implemented in other University Hospitals to improve health care equity for the IDD, SHCN populations