



CHALLENGES FOR ORAL REHABILITATION IN 28 - YEARS OLD PATIENT WITH HYPOPHOSPHATASIA

CASE REPORT

"EVERY STEP IS AN ACHIEVEMENT. TOGETHER, WE MAKE A DIFFERENCE."

AUTHORS

Carlos M Méndez Castellanos, DDS; Alice M Arroyo Juliá, DMD; Adrian Estopinales Paredes, DDS; Uzkelia Uzcategui Moncada, DDS; Yatnee Encarnación Ginés, DMD; Héctor Rojas Mercado, DDS

AFFILIATIONS

General Practice Residency in Dentistry, School of Dental Medicine, University of Puerto Rico

INTRODUCTION

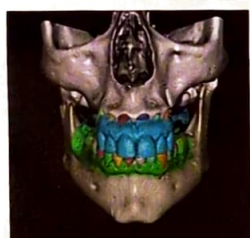
Hypophosphatasia (HPP) is a rare, inherited disorder characterized by defective bone mineralization and low levels of alkaline phosphatase activity. This condition can lead to various dental anomalies, including premature loss of primary teeth, enamel hypoplasia, and severe periodontal disease.



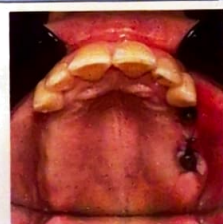
OBJECTIVE

Demonstrate the successful oral rehabilitation and improved quality of life for a patient with HPP, emphasizing how, as dentists, we can treat patients with this condition through a personalized and multidisciplinary approach.

TREATMENT PROGRESS



BEFORE



AFTER



PROGRESS DESCRIPTION

Studies indicate that asfotase alfa improves bone quality, facilitating successful dental implant placement in hypophosphatasia patients. A comprehensive treatment plan included scaling and root planing in all quadrants, followed by implant placement at sites #12 (3.3 mm x 12 mm) and #14 (4.4 mm x 8 mm). A provisional screw-retained PMMA FPD was used to shape peri-implant soft tissue.

CONCLUSION

A multidisciplinary approach to dental care for patients with hypophosphatasia demonstrates that, despite the inherent challenges, effective oral rehabilitation is attainable through careful planning and collaboration among dental specialists. This case adds valuable insights to the understanding of managing complex dental issues in individuals with systemic diseases.

RECOMMENDATIONS

Consider long-term studies to evaluate the durability and success of oral rehabilitations and their impact on quality of life.

REFERENCES

