



Complete Oral Rehabilitation in a Patient with Multiple Systemic Conditions: A Case Report.

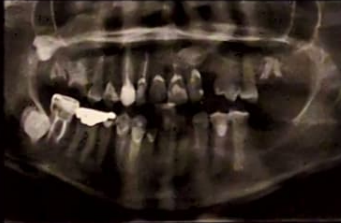
Estopinales-Paredes, Adrian¹; Avila-López, Aaron¹; Encarnación-Ginés, Yatee²; Uzcategui-Moncada, Uzkelia²; Pérez-López, Camila²

¹PGY-2, General Practice Residency, School of Dental Medicine, University of Puerto Rico

²Faculty, General Practice Residency, School of Dental Medicine, University of Puerto Rico



INTRODUCTION



PANORAMIC

Hypertension

- Characterized by high blood pressure, which can lead to severe complications like heart disease and stroke

Moyamoya Disease

- Is a rare, progressive cerebrovascular disorder caused by blocked arteries at the base of the brain

Bone Marrow Transplant

- Treatment used for certain cancers and blood disorders, where damaged or diseased bone marrow is replaced with healthy marrow.

Nephrotic Syndrome

- A kidney disorder causing the body to excrete too much protein in the urine, leading to swelling and an increased risk of infections.

Diabetes Mellitus

- Metabolic condition resulting from the body's inability to regulate blood sugar levels.

Sickle Cell Disease

- Genetic blood disorder where red blood cells become misshapen, causing pain, anemia, and potential organ damage

Epilepsy

- Epilepsy is a neurological disorder marked by recurrent seizures due to abnormal brain activity.

Sjogren's Syndrome

- An autoimmune disorder primarily affecting the body's moisture-producing glands, leading to dry eyes and mouth.

CASE REPORT

29-year-old patient

Medical Hx:

The patient suffered a Cerebrovascular accident in 2011.



Diagnosis:

- Multiple root retained
- Dental caries
- Generalized Gingivitis

Consultation:
Internal Medicine

DENTAL TREATMENT:

- Multiple extractions were performed over several appointments, adhering to bleeding prevention guidelines due to the patient's hematological conditions.
- Restorative Phase: complete upper and lower dentures.
- Subsequent Phase: implants will be placed to support overdentures in both arches.



CONCLUSIONS

- Patients with a complex medical history required careful coordination with internal medicine and a multidisciplinary approach to address his numerous systemic conditions.
- Despite the challenges posed by his multiple health issues, the treatment plan was successfully executed. Through multiple appointments and close monitoring, we managed to perform necessary extractions and control potential complications, particularly related to his hematological and autoimmune conditions.
- The initial phase of rehabilitation with complete dentures has been accomplished, laying the foundation for the second phase involving implant-supported overdentures.

REFERENCES

- American Diabetes Association. (2023). Standards of Medical Care in Diabetes—2023. *Diabetes Care*, 46(Supplement 1), S1-S300. <https://doi.org/10.2337/ds23-Sum>
- Kwiatkowski, J. L., & Oyler, S. O. (2019). Sickle Cell Disease: Advances in Diagnosis and Management. *JAMA*, 321(18), 776-777. <https://doi.org/10.1001/jama.2018.20416>
- Scott, R. M., & Smith, E. R. (2009). Moyamoya Disease and Moyamoya Syndrome. *New England Journal of Medicine*, 360(12), 1226-1237. <https://doi.org/10.1056/NEJMoa0804622>
- Hypertension Clinical Guidelines. (2023). *Guidelines for the Management of Hypertension*. American Heart Association.