

Certificate of Analysis

SETD8

Human histone Lysine N-methyltransferase SETD8, active

(Recombinant enzyme expressed in *E.coli*)

Item # EPI057, EPI057-K

Lot parent # 140882

The data presented in this document apply to the parent lot shown above and to all pack sizes derived from subsequent vialling runs of this parent lot. An alphabetical suffix after the parent lot number is used to denote each vialling run.

Product Description: recombinant human SETD8, amino acids 186-352, expressed in *E.coli*. Purified using immobilised metal affinity chromatography. MW = 19.2kDa.

Formulation: 1mg/ml of enzyme in 25mM Tris/HCl pH7.5, 250mM NaCl, 50% Glycerol. Frozen solution.

Tag cleaved by thrombin protease.

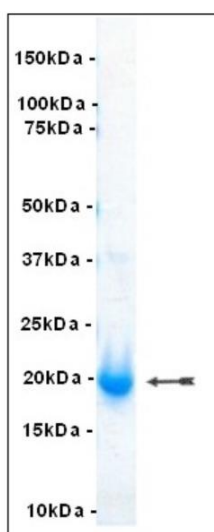
Storage and Stability: On receipt of material store at -70°C. Unopened reagent is stable for a minimum of 1 year from date of shipment when stored at recommended storage temperature. Avoid repeat freeze/thaw cycles. For maximum recovery of product, centrifuge original vial prior to removing the cap.

Handling Recommendations: Rapidly thaw the vial under cold water and immediately place on ice. Aliquot unused material into pre-chilled microcentrifuge tubes and immediately snap-freeze the vials in liquid nitrogen prior to re-storage at -70°C.

**FOR IN VITRO RESEARCH USE ONLY
NOT FOR USE IN HUMANS OR ANIMALS**

Quality Control Testing

MS: Size was confirmed by mass spectrometry using a Q-TOF.



SDS-PAGE and Coomassie Stain: Purity was assessed by SDS-PAGE and Coomassie blue staining using 4µg of SETD8.

SETD8 Sequence Information

Certificate of Analysis

| | |
|--------------------------------|----------------------------------|
| <u>Protein</u> | Human SETD8 |
| <u>Tags</u> | tag cleaved by thrombin protease |
| <u>Accession number</u> | GenBank NP_065115.3 |

Recombinant SETD8 amino acid sequence:

1 GSPVRRSSRK SKAELQSEER KRIDELIESG KEEGMKIDLI DGKGRGVIAT
51 KQFSRGDFVY EYHGDLIEIT DAKKREALYA QDPSTGCYMY YFQYLSKTYC
101 VDATRETNRL GRLINHSKCG NCQTKLHDID GVPHLILIAS RDIAAGEELL
151 YDYGDRSKAS IEAHPWLKH

Reviewed and approved by site quality representative.

Unless otherwise stated in our catalogue or other company documentation accompanying the product(s), our products are intended for research use only and are not to be used for any other purpose, which includes but is not limited to, unauthorized commercial uses, in vitro diagnostic uses, ex vivo or in vivo therapeutic uses or any type of consumption or application to humans or animals.