



# Spotlight

## Rhode Island Department of Education

Strengthening academic outcomes for multilingual learners through high-quality professional learning

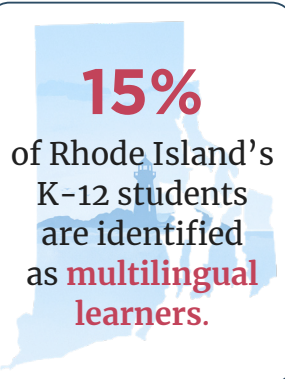
ELSF partnered with the Rhode Island Department of Education (RIDE) to reimagine and elevate the academic experience of multilingual learners through our implementation learning series. This experience supported participating district teams in building high-quality instructional material systems that center multilingual learners through:

- Professional learning rooted in curriculum literacy
- Targeted training and high-impact resources
- Sustained virtual coaching supports for leaders grounded in cross-functional collaboration and peer learning

### The Need

From RIDE's Blueprint: "MLLs represent the fastest-growing student population in Rhode Island, with the state seeing more than **40 percent increase** in the last six years alone."

Due to their rapidly growing multilingual learner population, RIDE created the Blueprint for Multilingual Learners' (MLL) Success.



To ensure that MLLs were better centered in Rhode Island's High Quality Curricular Materials (HQCM) initiative, RIDE engaged ELSF's team of experts to enact material implementation cohorts so leaders across the state could deepen their understanding of how best to support MLLs in their respective districts.

### How We Helped

ELSF's implementation learning series focused on three core researched-backed priorities:



**Building Coherent Systems:** Facilitating work across the system to develop integrated approaches to high-quality instructional material adoption and implementation



**Growing Instructional Leadership:** Providing high-quality professional learning rooted in curriculum literacy



**Enacting High Quality Instructional Materials (HQIM) Implementation Guidance:** Working with district and school leaders to help them better understand how to uplift multilingual learner needs in the material adoption and implementation process across content areas and grade levels

ELSF's work with RIDE took place through **cohorts**, small groups of district leaders and educators from across schools, content areas, and job titles, creating a community of learning based on shared investment. These sessions help educators deepen their collective **curriculum literacy**, while also opening avenues for further communication, engagement, and coherent messaging around how best to support MLLs in HQIM implementation from the state-level down to individual districts and schools. ELSF's partnership with RIDE included:



Planning meetings with the core RIDE team



In-person professional learning sessions with diverse district teams composed of educators from across schools, content areas, and job titles



Virtual coaching and personalized analysis and advising for district teams



Provision of curated guidance through toolkits and resources

## Our Impact

**97%**  
educators

**46**  
district staff

**12**  
districts

engaged in our implementation cohorts.

Participants emerged with a set of research-based strategies, a greater connection and community with their peers, and the skills necessary to build and support **coherent instruction** across the educational system. When asked to reflect on the implementation cohort, participants reported increased knowledge of practices that support MLLs' access to HQIM.

“ I used to think that math was math, and there was no place for language development in it. Now I see all the missed opportunities our MLLs deserve for us to provide them.” - Participant in 2023 RIDE

“ I used to think it was difficult to figure out where to start to build systems and codify information for the district. Now with the tools given today, I have a better sense of how to start working towards a framework to support MLLs at the district level.” - Participant in 2024 RIDE

“ To ensure that [MLLs] received high-quality, inclusive instruction, with materials that reflected their diverse cultural and linguistic experiences...RIDE partnered with ELSF. The goal was to... help district leadership teams follow through on the state's Blueprint for Multilingual Learner Success by better addressing the needs of these students in core instruction, school design and programming.” - [Angélica Infante-Green](#), Rhode Island commissioner of elementary and secondary education

RIDE continues to demonstrate its commitment to professional learning, ensuring its educators have the tools they need to implement a curriculum that effectively supports multilingual learners. This investment is paying off. Recently exited multilingual learners are now outperforming the overall student population in [certain key metrics](#). Harvard's [2025 Education Recovery Scorecard](#) also noted the [Rhode Island Assessment Results 2024](#), indicating that Rhode Island leads all New England states in academic recovery.

**Contact us** to discover how ELSF supports educators in improving academic outcomes for multilingual learners.

 [www.elsuccessforum.org](http://www.elsuccessforum.org)

 [opportunities@elsuccessforum.org](mailto:opportunities@elsuccessforum.org)

 [@elsuccessforum](https://twitter.com/elsuccessforum)

 [@English Learners Success Forum](https://www.linkedin.com/company/english-learners-success-forum)

