



# Systems data sheet

January 1, 2024  
Revision #1



# SCI-Polyurea Flake System

DESCRIPTION	SCI-Polyurea Flake System is a two component, polyurea with colored vinyl flake coating, designed for one day application. It is extremely durable with a good abrasion resistance. This system has been designed for pedestrian and vehicular traffic.																																																											
	<b>This system is composed of:</b> 1. A coat of SCI-200-700 (8-10 mils) full vinyl flake broadcast 2. Topcoat of SCI-300-80 or SCI-300-8084 (8-12 mils) depending on the level of anti-slip required 3. Option: replace SCI-300-MPL																																																											
PRIMARY APPLICATIONS	<ul style="list-style-type: none"><li>■ Aircraft hangar floors</li><li>■ Warehouses</li><li>■ Residential and commercial garages</li><li>■ Exterior balconies</li><li>■ Locker rooms and showers</li><li>■ Production lines</li><li>■ Stadiums</li><li>■ Printing shops</li></ul>																																																											
ADVANTAGES	<ul style="list-style-type: none"><li>■ System can be completed in one day</li><li>■ Fast return to service</li><li>■ Ideal to fix and reinforce concrete surfaces</li><li>■ Impermeable and seamless</li><li>■ Seamless coves can be shaped using SCI-COVE</li><li>■ Dense surface resistant to bacteria and moisture and easy to clean</li><li>■ Excellent adhesive properties, allowing for application on a wide variety of substrates</li><li>■ May apply several layers on itself with excellent adhesion</li></ul>																																																											
TECHNICAL DATA	<table><tr><td rowspan="4">Packaging (litres / us gal)</td><td colspan="2">SCI-200-700</td><td colspan="2">SCI-300-80</td></tr><tr><td colspan="2">11.34 / 3    56.7 / 15</td><td colspan="2">7.56 / 2    37.8 / 10</td></tr><tr><td>Color</td><td>Part A</td><td>On Request</td><td>Light Yellow</td></tr><tr><td></td><td>Part B</td><td>Amber</td><td>Clear</td></tr><tr><td></td><td>Mixture</td><td>Same as Part A</td><td colspan="2">Light Yellow</td></tr><tr><td colspan="2">Recommended Thickness</td><td colspan="3"></td></tr><tr><td colspan="2">Primer: SCI-200-700</td><td colspan="3">8 mils / 200 ft² us gal</td></tr><tr><td colspan="2">Topcoat: SCI-300-80</td><td colspan="3">8 -12 mils / 133-200 ft² us gal</td></tr><tr><td colspan="2">Shelf Life</td><td colspan="3">12 months in original unopened factory sealed containers. Keep away from extreme cold, heat, or moisture. Keep out of direct sunlight and away from fire hazards.</td></tr><tr><td colspan="2">Mix Ratio, by volume</td><td colspan="3">SCI-200-700: A:B = 2:1</td></tr><tr><td colspan="2"></td><td colspan="3">SCI-300-80: A:B = 1:1</td></tr><tr><td colspan="5">*Please note that the indicated mileage is calculated for flat surfaces. A porous or imperfect surface will require more material in order to cover the same mileage.</td></tr></table>			Packaging (litres / us gal)	SCI-200-700		SCI-300-80		11.34 / 3    56.7 / 15		7.56 / 2    37.8 / 10		Color	Part A	On Request	Light Yellow		Part B	Amber	Clear		Mixture	Same as Part A	Light Yellow		Recommended Thickness					Primer: SCI-200-700		8 mils / 200 ft² us gal			Topcoat: SCI-300-80		8 -12 mils / 133-200 ft² us gal			Shelf Life		12 months in original unopened factory sealed containers. Keep away from extreme cold, heat, or moisture. Keep out of direct sunlight and away from fire hazards.			Mix Ratio, by volume		SCI-200-700: A:B = 2:1					SCI-300-80: A:B = 1:1			*Please note that the indicated mileage is calculated for flat surfaces. A porous or imperfect surface will require more material in order to cover the same mileage.				
Packaging (litres / us gal)	SCI-200-700		SCI-300-80																																																									
	11.34 / 3    56.7 / 15		7.56 / 2    37.8 / 10																																																									
	Color	Part A	On Request		Light Yellow																																																							
		Part B	Amber	Clear																																																								
	Mixture	Same as Part A	Light Yellow																																																									
Recommended Thickness																																																												
Primer: SCI-200-700		8 mils / 200 ft² us gal																																																										
Topcoat: SCI-300-80		8 -12 mils / 133-200 ft² us gal																																																										
Shelf Life		12 months in original unopened factory sealed containers. Keep away from extreme cold, heat, or moisture. Keep out of direct sunlight and away from fire hazards.																																																										
Mix Ratio, by volume		SCI-200-700: A:B = 2:1																																																										
		SCI-300-80: A:B = 1:1																																																										
*Please note that the indicated mileage is calculated for flat surfaces. A porous or imperfect surface will require more material in order to cover the same mileage.																																																												
PROPERTIES @ 23°C (73°F) 50% R.H.	Hardness (Shore D), ASTM D2240		75-80																																																									
	Water Absorption (%), ASTM D570		0.04%																																																									
	Flammability, ASTM D-635		Self Extinguishing																																																									
	Critical Radiant Flux, ASTM E-648		Class II																																																									
	Tensile Strength, ASTM D-638		3,700 PSI																																																									
	Flexural Strength, ASTM D-790		4,700 PSI																																																									
	Indentation, MIL D-3134		.050 Inches																																																									
	Impact Resistance, ASTM-D2794		>160																																																									
	Bond Strength to Concrete ASTM-4541		400 PSI substrate fails																																																									
	Elevated Temperature, MIL D-3134		No slip or flow																																																									
	Compressive Strength, ASTM-D695		16 000 PSI																																																									



# SCI-Polyurea Flake System

## PROPERTIES @ 23°C (73°F) 50% R.H.

Thermal Shock, MIL-52505	No cracking or loss of adhesion	
Noise Reduction Coefficient	0.05	
Taber Abrasion Resistance A&B	<b>Gloss Finish</b> w/grit - 4mg loss no grit - 10 mg loss	<b>Satin Finish</b> w/grit - 8mg loss no grit - 12 mg loss
Abrasion Resistance	AR 0.5	
Static Coefficient of Friction	>0.6	
Dynamic Coefficient of Friction - Wet	>0.42	

## SURFACE PREPARATION

The surface to be coated must be well primed. Remove dust, laitance, grease, oils, dirt, impregnating agents, waxes, foreign matter, any previous coatings, and disintegrated substances by mechanical means such as shot-blasting (BLASTRAC) or any other approved method to obtain an ICRI-CSP 3-4 profile. The compressive strength of the concrete must be at least 25 MPa (3625 lbs/in<sup>2</sup>) after 28 days and the tensile strength at least 1.5 MPa (218 lbs/in<sup>2</sup>).

## MIXING

The products must be conditioned at a temperature between 18°C (65°F) and 30°C (86°F).

### Pre-mixed color or clear (A)

Mix the resin part (A) perfectly before pouring the hardener (part B) according to the indicated mixing ratio. Depending on product amount and size of mixing equipment, mix for 1 to 3 minutes at low speed (300 to 450 rpm). During mixing, scrape the walls and bottom of the container at least once with a trowel to obtain a homogeneous mixture. As the pot life is limited, prepare amount of desired product as required in order to avoid any loss.

### Part (A) when adding color pod

Incorporate a full colored container into the clear part (A), and then thoroughly mix until the color is uniform (one colored container pod per part A gallon) before pouring in the hardener (part B) according to the indicated mixing ratio. Depending on product amount and size of mixing equipment, mix for 1 to 3 minutes at low speed (300 to 450 rpm). During mixing, scrape the walls and bottom of the container at least once with a trowel to obtain a homogeneous mixture. As the pot life is limited, prepare amount of desired product as required in order to avoid any loss.



# SCI-Polyurea Flake System

## APPLICATION

### APPLICATION BASE COAT:

#### **Basecoat: option 1 (partial broadcast)**

Apply a colored coat of SCI-200-700 (choose color similar to that of vinyl flakes) using a rubber squeegee and pass a roller to obtain a uniform coating. On the wet coating apply enough vinyl flakes to partially broadcast the coating.

#### **Basecoat: option 2 (full broadcast)**

Apply a colored coat of SCI-200-700 (choose color similar to that of vinyl flakes) using a rubber squeegee and pass a roller to obtain a uniform coating. On the wet coating apply enough vinyl flakes to completely broadcast the coating.

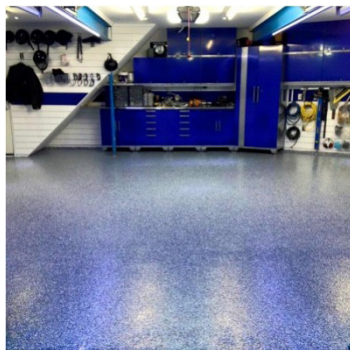
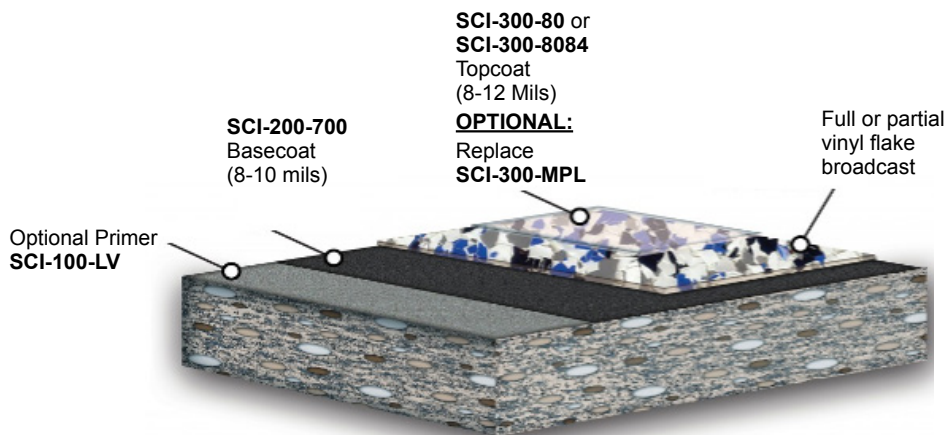
### APPLICATION TOPCOAT:

#### **Topcoat: option 1 (partial broadcast)**

Apply a topcoat of clear SCI-300-80 or SCI-300-8084 using a rubber squeegee and pass a roller to obtain a uniform coating.

#### **Topcoat: option 2 (full broadcast)**

Once the basecoat has cured and hardened remove any excess flakes and pass a scraper to cut down any uneven flakes. Use a blower or vacuum cleaner to clean any remaining flakes before applying a topcoat of SCI-300-80 or SCI-300-8084 using a rubber squeegee and pass a roller to obtain a uniform coating.





# SCI-Polyurea Flake System

<b>CLEANING</b>	Clean all application equipment with the recommended cleaner (Xylene). Once the product has hardened, it can only be removed by mechanical means. In case of skin contact, wash thoroughly with warm soapy water.
<b>RESTRICTIONS</b>	<ul style="list-style-type: none"><li>■ Do not apply at temperatures below 10°C / 50°F or above 30°C / 86°F</li><li>■ The relative humidity of the surrounding work environment during the application of the coating and throughout the curing process should not exceed 85%</li><li>■ Substrate temperature must be 3°C (5.5°F) above dew point measured</li><li>■ Humidity content of substrate must be &lt;4% when coating is applied</li><li>■ Do not apply on porous surfaces where a transfer of humidity may occur during the application</li><li>■ The application of this coating on an interior or exterior substrate without a moisture barrier is at risk of detachment (by hydrostatic pressure).</li><li>■ Protect the coating from all sources of moisture for a period of 48 hours</li><li>■ Surface may discolor in areas exposed to regular ultraviolet light</li></ul>
<b>HEALTH AND SAFETY</b>	In case of skin contact, wash with water and soap. In case of eye contact, immediately rinse with water for at least 15 minutes. Consult with a doctor. For respiratory problems, transport victim to fresh air. Remove contaminated clothes and clean before reuse. Components A and B contain toxic ingredients. Prolonged contact of this product with the skin is susceptible to provoke an irritation. Avoid eye contact. Contact with may cause serious burns. Avoid breathing vapors release from this product. This product is a strong sensitizer. Wear safety glasses and chemical resistant gloves. A breathing apparatus filtering organic vapors approved by the NIOSH/MSHA is recommended. Predict suitable ventilation. Consult the material safety data sheet for further information.
<b>IMPORTANT NOTICE</b>	The information and recommendations contained in this document are based on reliable test results according to SCI COATINGS INC. The data mentioned are specific to the material indicated. If used in combination with other materials, the results may be different. It is the responsibility of the user to validate the information therein and to test the product before using it. SCI COATINGS INC. assumes no legal responsibility for the results obtained in such cases. SCI COATINGS INC. assumes no legal responsibility for any direct, indirect, consequential, economic or any other damages except to replace the product or to reimbursement the purchase price, as set out in the purchase contract.