

Contour

CONTOUR TOUCH WIRED

Product manual

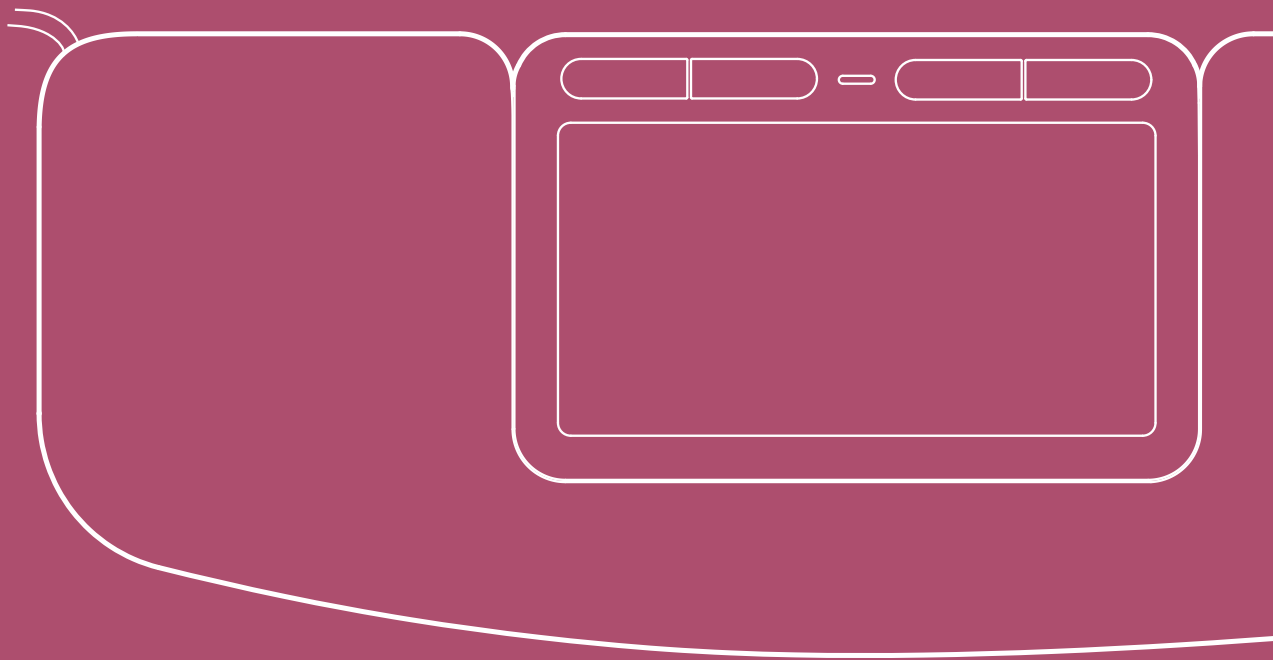


TABLE OF CONTENTS.

What's in the box	1
Meet Contour Touch	1
Get set up for comfort	2
Quick connect guide	2
Touchpad & buttons customisation	3
SnapLinks	5
Cleaning & maintenance	6
Safety, legal & warranty info	6

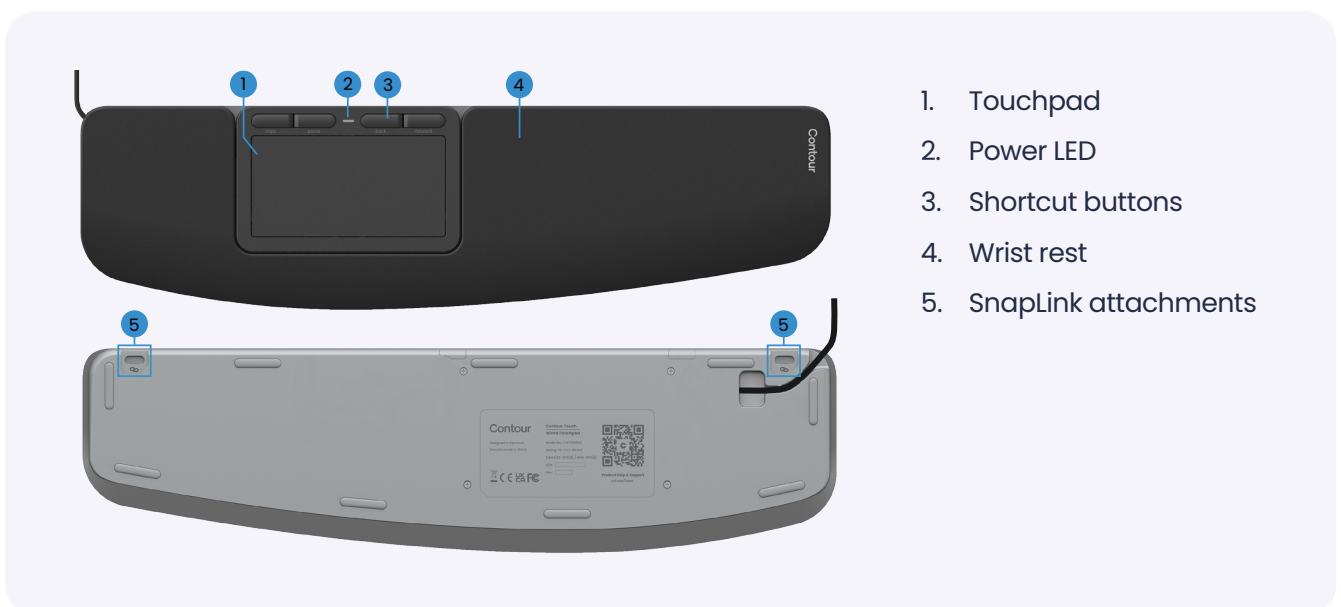


WHAT'S IN THE BOX.

You'll find everything you need for a seamless setup inside the box.



MEET CONTOUR TOUCH.



GET SET UP FOR COMFORT.

Before you start working, set yourself up for all-day comfort.

Relax your shoulders. Keep your elbows at 90 degrees, close to your body. Your forearms should be parallel to the floor, with wrists in a straight, neutral position.

Line up the H key of your keyboard and the center of the touchpad with your monitor – and your body. This helps keep your posture natural and balanced.

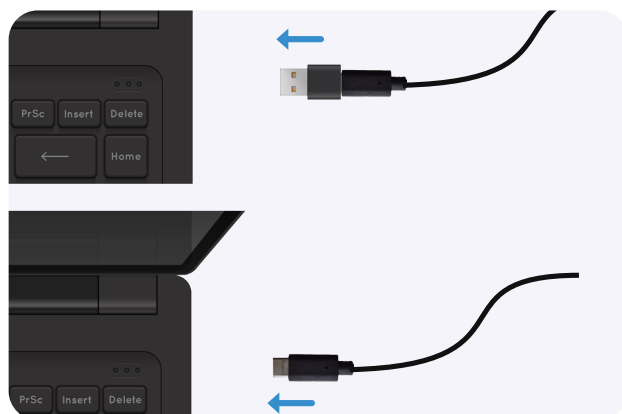
Position the keyboard close to the touchpad, and keep the Contour Touch far enough from the desk edge to support your forearms and reduce wrist twisting.



QUICK CONNECT GUIDE.

If you have the wired version of Contour Touch, just plug the USB cable into any available USB port in your PC.

Your computer will connect to the touchpad automatically. No extra steps needed.

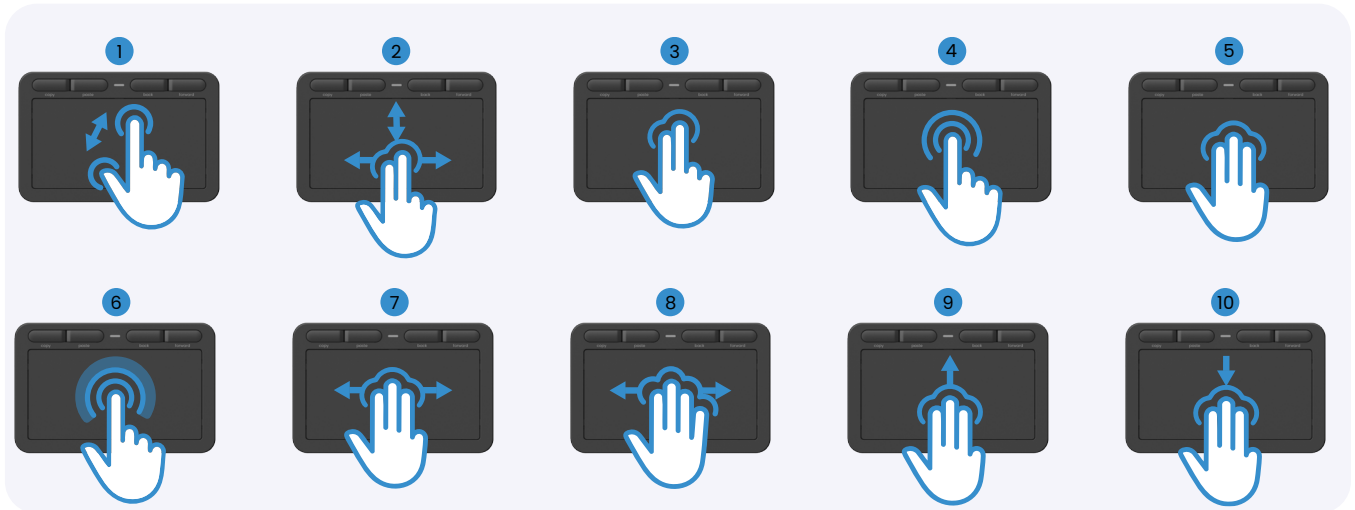


The cable comes with a USB-A adapter pre-installed.

Just slide the adapter off and plug in the USB-C connector instead

TOUCHPAD & BUTTONS CUSTOMISATION.

Touchpad gestures



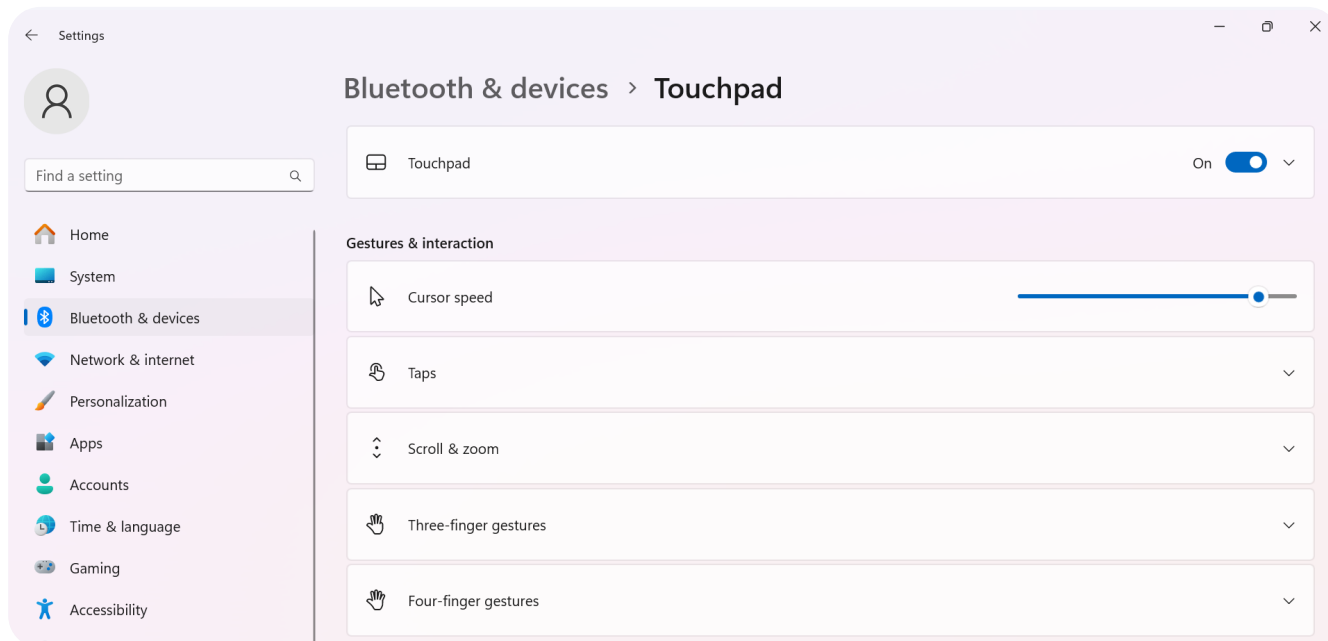
Contour Touch comes with pre-set touchpad gestures to help you boost your productivity.

1. **Zoom:** Move two fingers apart to zoom in or pinch them together to zoom out
2. **Scroll:** Slide two fingers up or down or from side to side to scroll through pages or lists
3. **Right click:** Tap once with two fingers anywhere or click in the lower-right corner
4. **Double click:** Tap twice with one finger to open or select an item
5. **Open search:** Tap once with three fingers to open search
6. **Drag and drop:** Tap twice and hold with one finger, then slide to move an item; release to drop it or deep press and hold with one finger, then use another finger to drag the item around
7. **Switch apps:** Swipe three fingers left or right to switch between open applications
8. **Switch desktops:** Swipe four fingers left or right to move between multiple desktops
9. **Task view:** Swipe three fingers up to see all open windows and switch between them
10. **Show desktop:** Swipe three fingers down to reveal the desktop

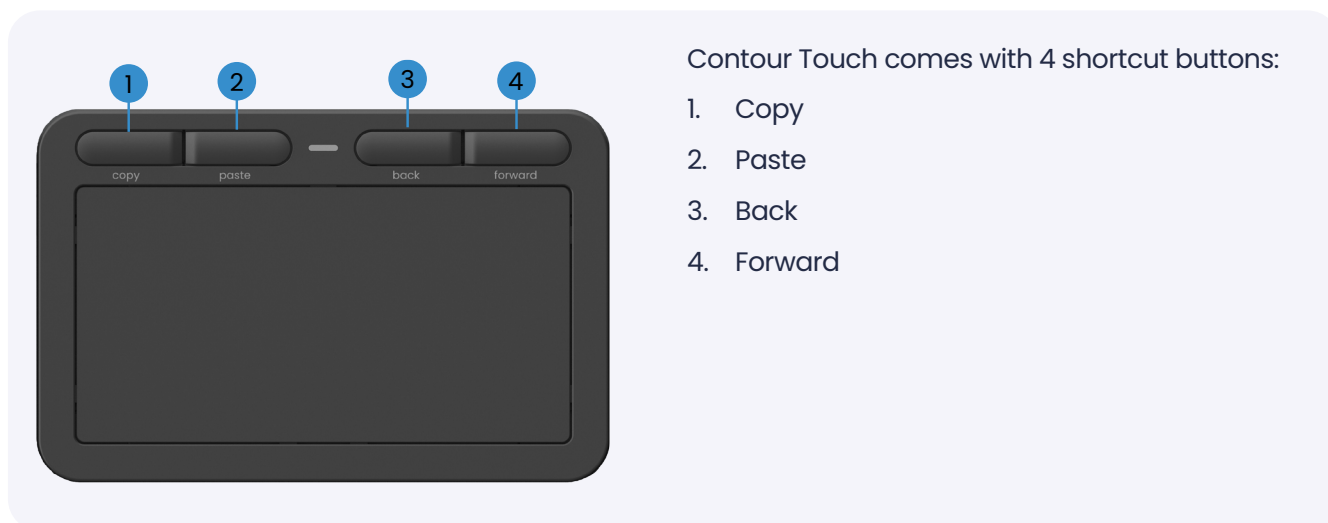
Want to change the behaviour of the touchpad?

Open your Windows Settings to change cursor speed, gestures, disable right click and much more.

Go to Settings – Bluetooth & devices – Touchpad



Shortcut buttons



Want to make it your own?

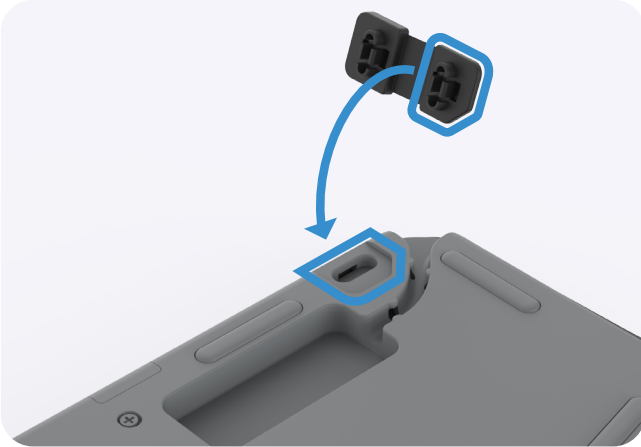
Download Contour software to customize and unlock the full potential of your Contour Touch

Visit cd.now/sw to get started

SNAPLINKS.

Using Contour Touch with Balance Full-Size Keyboard?

Use the SnapLinks (included in your Contour Touch box) to seamlessly attach the two devices. This creates perfect alignment - improving comfort and giving you a stable setup, while you work.



Step 1: Turn your Contour Touch around and attach the two SnapLinks to the SnapLink attachment points



Step 2: Turn the Contour Touch back around and place it on your desk with the touchpad facing up. Press the Balance Full-Size Keyboard onto the SnapLinks until it clicks into place

CLEANING & MAINTENANCE.

Contour Touch is designed to be easy to maintain – and yes, it can be safely disinfected.

Follow these steps to clean the product safely and keep your warranty intact:

- Unplug any cables and make sure the device is turned off before cleaning
- Use an alcohol-based solution (up to 70% concentration) for disinfection
- Never apply liquid directly to the device. Instead, lightly dampen a soft, clean cloth with the solution and gently wipe down the surface
- Avoid soaking, dripping, or letting moisture pool. Too much liquid can harm sensitive components
- Once wiped, make sure everything is dry before using the device again

SAFETY, LEGAL AND WARRANTY INFO.

Warranty

If there is a functional defect due to faulty manufacturing, we will replace the product. This warranty does not cover damage that results from misuse of the product.

Attention!

If you attempt to dismantle your product, you will invalidate your warranty.

Contour Design Nordic A/S

Nyropsgade 43, 1. floor
DK-1602 Copenhagen V, Denmark
Contact Support: cd.now/support

Contour Innovations LLC

10 Industrial Drive
Windham, New Hampshire 03087, USA
Contact Support: cd.now/support

For more information please visit:

www.contourdesign.com

Tested to comply with FCC and IC standards.

