

Contour

BALANCE FULL-SIZE KEYBOARD WIRELESS

Product manual

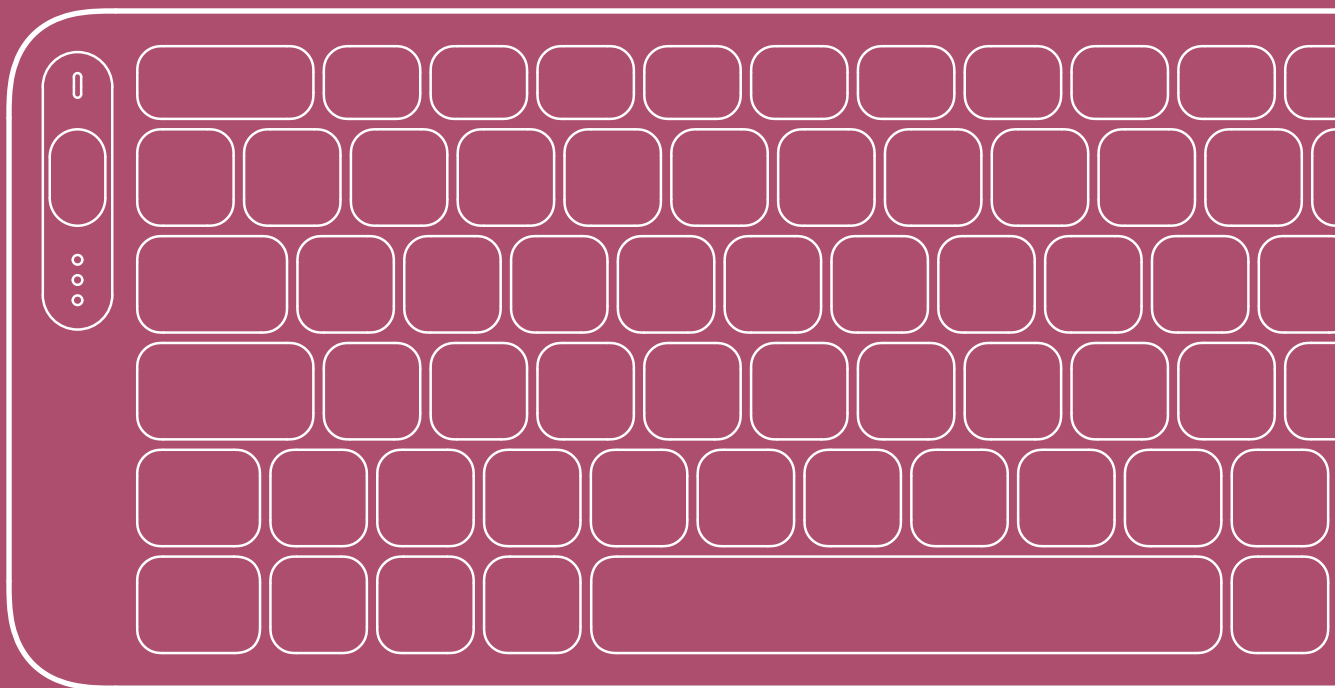


TABLE OF CONTENTS.

What's in the box	1
Meet Balance	1
Get set up for comfort	2
Quick connect guide	2
Tilt options	6
Media keys & customisation	7
Function keys	8
Caps lock & num lock	8
Battery & charging	9
Battery replacement	10
Cleaning & maintenance	12
Safety, legal & warranty info	13



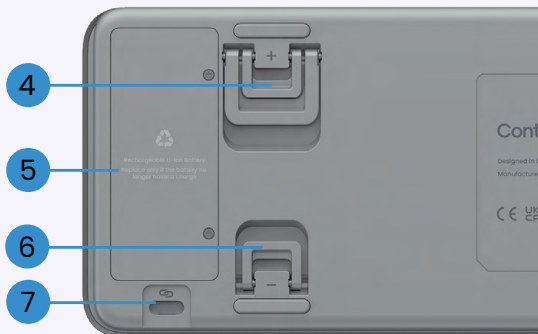
WHAT'S IN THE BOX.

You'll find everything you need for a seamless set-up inside the box.



1. Balance Keyboard Wireless
2. USB-C dongle (wireless receiver)
3. Charging cable

MEET BALANCE.



1. Battery status LED
2. QuickSwitch button
3. On/off switch
4. Positive tilt legs
5. Battery cover
6. Negative tilt legs
7. SnapLink attachments

GET SET UP FOR COMFORT.

Before you start typing, set yourself up for all-day comfort.

Relax your shoulders. Keep your elbows at 90 degrees, close to your body. Your forearms should be parallel to the floor, with wrists in a straight, neutral position.

Whether you're pairing your Balance Keyboard with a Contour Touch, your set-up matters.



Contour Touch:

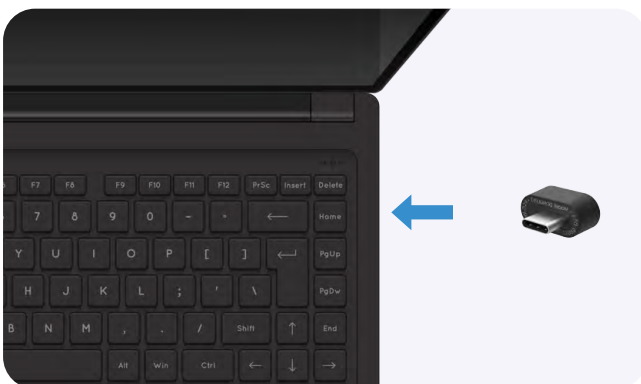
Line up the H key and the centre of the touchpad with your monitor and body

Position the keyboard close to the touchpad, and keep the Contour Touch far enough from the desk edge so your forearms are supported when resting

QUICK CONNECT GUIDE.

If you have the wireless version of Balance Keyboard, you can choose between connecting via dongle (wireless receiver) or Bluetooth.

Connect via Contour USB-C dongle



Step 1: Plug the dongle into a USB-C port on your PC



Step 2: Turn on the keyboard using the slider on the left side

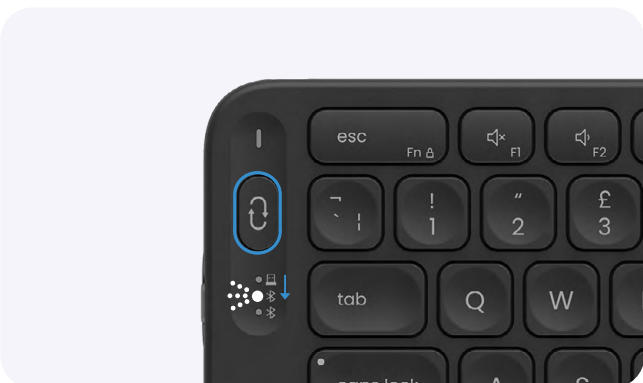


The dongle LED will start flashing and turn solid white when the keyboard is connected

Connect via Bluetooth

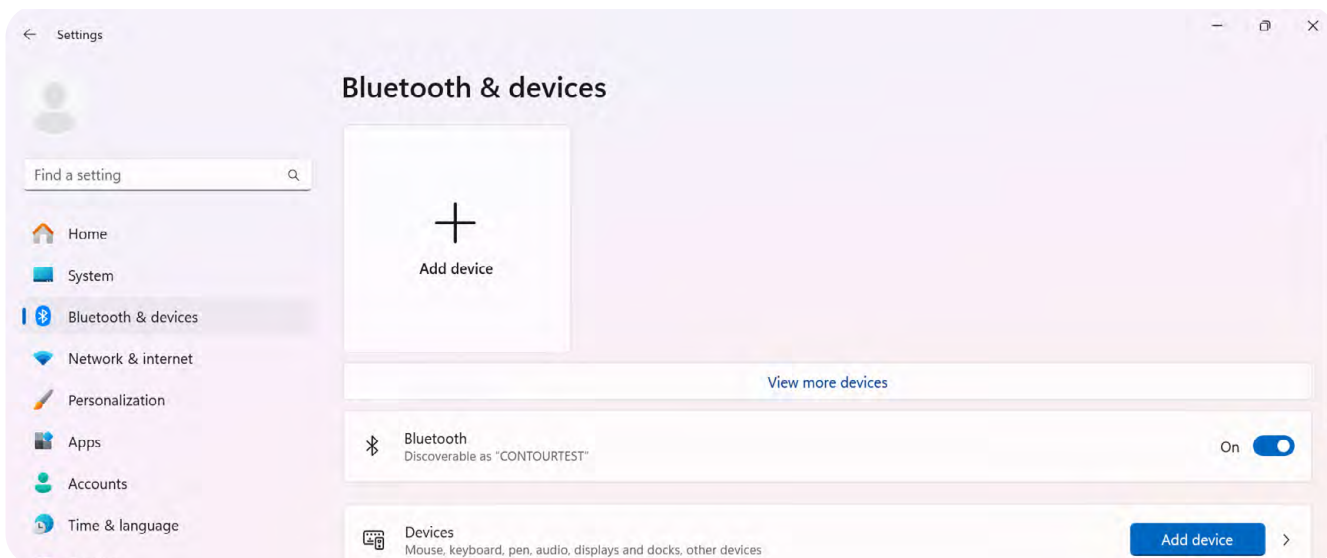


Step 1: Turn on the keyboard using the slider on the left side



Step 2: Short press the QuickSwitch button to switch to Bluetooth channel 1 or 2

The LED will start flashing - that means it's in pairing mode (for 120 seconds)

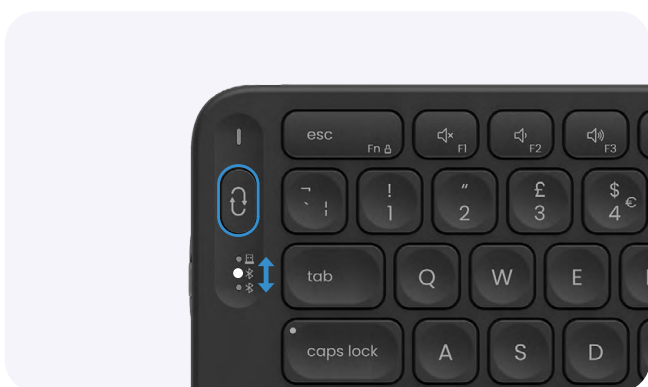


Step 3: Go to Settings – Bluetooth & devices – Add Device – Bluetooth, and select Balance from the list. If Swift Pair is enabled on your PC, the keyboard will automatically pop up at the lower right corner of your screen

Step 4: Enter the 6-digit PIN using your Balance Keyboard and hit the Enter key to complete the Bluetooth pairing

Using QuickSwitch

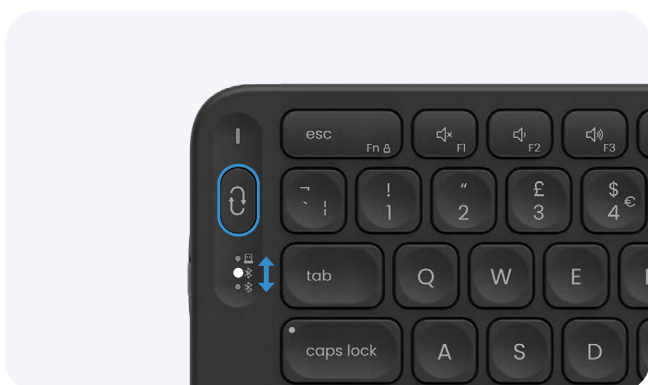
You can pair the keyboard with up to 3 devices at once – PC, phone, and tablet.



Switch between them easily by short pressing the QuickSwitch button

Restart Bluetooth pairing

Need to re-pair a device?



Make sure you're on the correct Bluetooth channel. You can always short press the QuickSwitch button to switch between channels



Press and hold the QuickSwitch button for 3 seconds

The LED flashes – that means the keyboard is discoverable again for 120 seconds

Pair with an existing Contour dongle

Already using a Contour device that's connected via a dongle?
You can pair your new Balance Keyboard with the same USB-A or USB-C dongle.



Step 1: Unplug and re-plug the dongle that is already paired with your Contour device

You now have 60 seconds to complete the following steps:



Step 2: If the keyboard is turned off, turn it on by using the slider on the left side



Step 3: Make sure the dongle LED is fading in and out. If not, press the QuickSwitch button until the dongle channel is selected

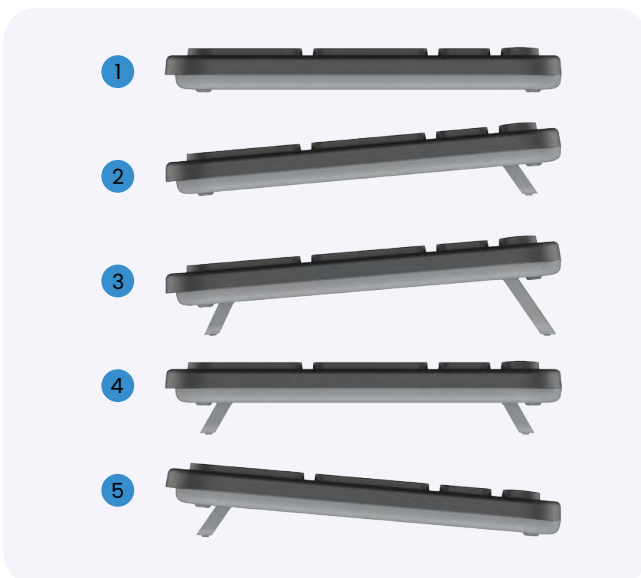


Step 4: Bring the keyboard's upper-left corner within 10 cm of the dongle

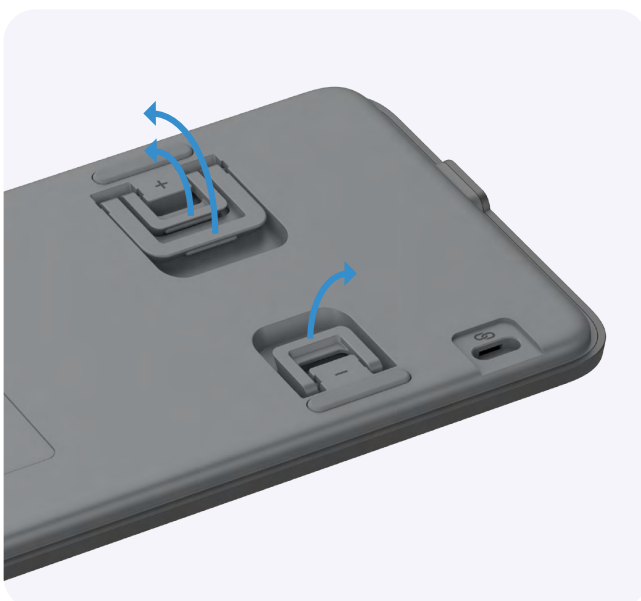
Step 5: Press and hold the QuickSwitch button for 3 seconds until the LED flashes rapidly. The LED will turn solid white once connected. You're now ready to type

TILT OPTIONS.

Balance Keyboard gives you five tilt options to suit your set-up, posture needs, and personal preference.



1. **Flat** – for Touch, Balance Wrist Rest and UniMouse (recommended ergonomic option)
2. **Positive tilt** – for Touch, Balance Wrist Rest and UniMouse
3. **Elevated positive tilt** – for RollerMouse or SliderMouse
4. **Elevated** – for RollerMouse or SliderMouse
5. **Negative tilt** – for RollerMouse or SliderMouse (recommended ergonomic option)



The + and – symbols on the tilt legs show you if you are choosing positive or negative tilt

MEDIA KEYS & CUSTOMISATION.

Your Balance Keyboard comes ready with preset media keys to get you going right away.

Want to make it your own?

Download the Contour software to customise the media keys based on your preferences and unlock the full potential of your keyboard

[Visit cd.now/sw](https://cd.now/sw) to get started

Full-Size media keys



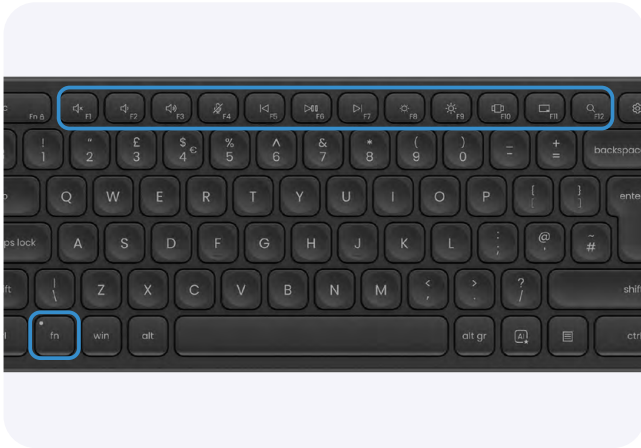
Number	Default assignment
1	Mute/unmute sound
2	Volume down
3	Volume up
4	Mute/unmute microphone
5	Previous track
6	Play/pause
7	Next track
8	Brightness down
9	Brightness up
10	Task view
11	Show desktop
12	Search
13	Open settings
14	Open calculator
15	Clear entry
16	Negative number toggle
17	Lock computer
18	Open Copilot or other AI assistant



FUNCTION KEYS.

Function keys & fn lock

By default, the top row of your keyboard is set for media keys like volume, play/pause, and more. Need traditional F-keys instead? You've got options:



For one-time use:

Hold down the fn key and short press any F-key



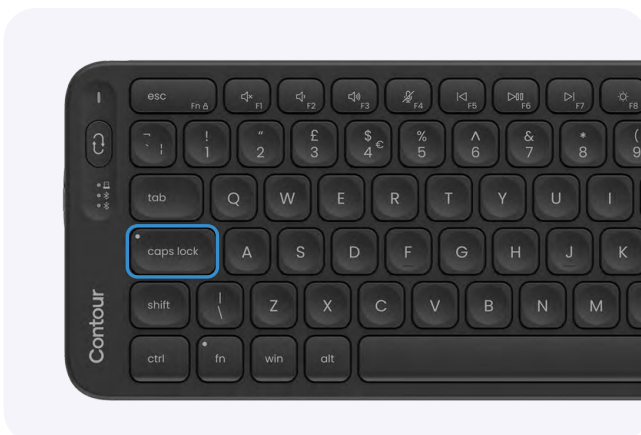
To switch modes:

Want to make F-keys the default? Just hold down the fn key and short press the esc key

The fn lock LED will turn on

To switch back to media keys as default, hold down the fn key and short press the esc key again

CAPS LOCK & NUM LOCK.



Caps lock:

Press the key once to turn caps lock on or off, when LED on the key is lit, caps Lock is on



Num lock:

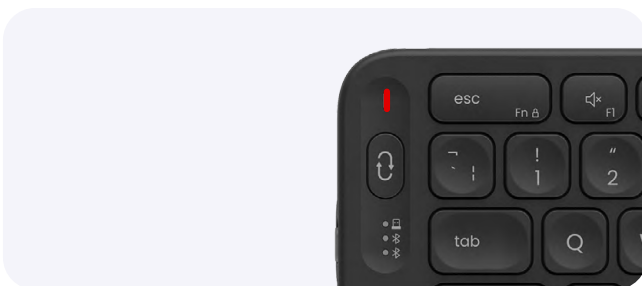
Press the key once to switch your numpad from numbers to navigation - or back again

BATTERY & CHARGING.

Balance Keyboard has a built-in rechargeable battery, so there's nothing to replace unless absolutely needed.

The battery arrives pre-charged and ready to go.

You'll get up to 3 months of use on a full charge with average daily typing.



Battery getting low? When the battery drops below 10%, the LED pulses red to let you know it's time to recharge

Charging



Plug the USB-C cable into the port on the top-left corner of the keyboard

The keyboard stays fully functional while charging - it just works in wired mode temporarily

Once you unplug, QuickSwitch and wireless features are back on



While charging, the battery LED pulses green.
When fully charged, it glows solid green

Sleep Modes

To help your battery last even longer, Balance Keyboard knows when to take a break. Just tap a key to wake it up

If you're connected via dongle, the keyboard goes to sleep after 30 seconds of no typing

If you're using Bluetooth, it goes to sleep after 60 minutes of inactivity

BATTERY REPLACEMENT.

While your Balance Keyboard is built to last, Li-ion batteries naturally wear out over time. If it's no longer holding a charge, you can replace it with a new one - just make sure it's the official replacement battery.

Safety guidance

Working with lithium-ion batteries involves risk and requires caution. Battery replacement should be carried out only by adults with basic technical knowledge. If you are unsure or uncomfortable performing this procedure, please contact Contour Support. Failure to follow these instructions may result in personal injury, damage to the product, or voiding of your warranty.



- Replace the battery only when necessary. If your keyboard is functioning normally, there is no need to replace the battery
- Do not expose the battery to heat or fire. Keep it away from direct sunlight, heaters, or open flames
- Never puncture, crush, or dismantle the battery. This may lead to leakage, fire, or explosion
- Do not short-circuit the battery terminals. This can result in burns or fire

Disclaimer: Contour is not liable for any injury, damage, or loss resulting from improper handling or installation of the battery. By proceeding, you acknowledge the risks and agree to follow all safety guidelines provided.

Low charge level



Before you begin:

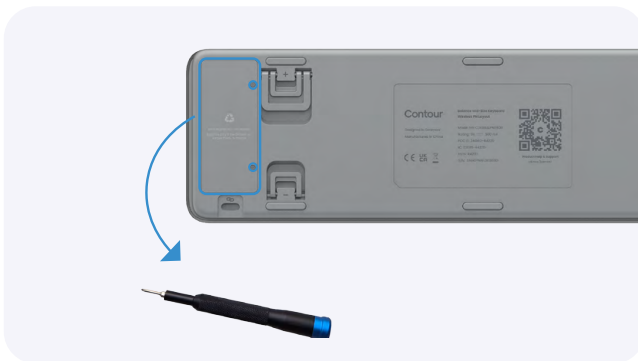
We recommend using the keyboard until the battery is depleted or at least at a low charge level. This minimises the risk of electric shock, short circuits, or accidental ignition during removal.

When the Battery status LED is pulsing in red, the battery is at a low charge level, which means it's safe to begin the battery replacement.

Replace the battery

Step 1:

For safety, turn off your keyboard and unplug all cables first. If it feels warm, let it cool before replacing the battery.



Step 2:

Turn the keyboard around and unscrew the two screws on the battery cover



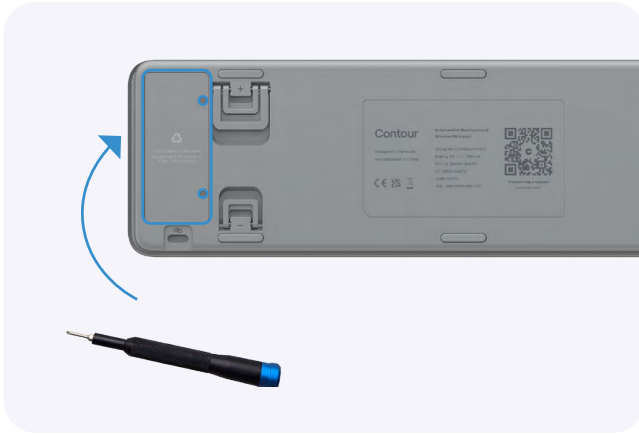
Step 3:

Gently disconnect the battery cable from its plug and remove the battery



Step 4:

Connect the new battery and place it into the groove



Step 5:

Re-attach the battery cover using the 2 screws

Step 6:

Dispose of the old battery responsibly, following local regulations



CLEANING & MAINTENANCE.

Balance Keyboard is designed to be easy to maintain - and yes, it can be safely disinfected.

Follow these steps to clean the product safely and keep your warranty intact:

- Unplug any cables and make sure the device is turned off before cleaning
- Use an alcohol-based solution (up to 70% concentration) for disinfection
- Never apply liquid directly to the keyboard. Instead, lightly dampen a soft, clean cloth with the solution and gently wipe down the surface
- Avoid soaking, dripping, or letting moisture pool. Too much liquid can harm sensitive components
- Once wiped, make sure everything is dry before using the keyboard again

SAFETY, LEGAL & WARRANTY INFO.

FCC Statement

Changes or modifications made not expressly approved by the party responsible for compliance could void the user's authority to operate the equipment.

This equipment has been tested and found to comply with the limits for a Class B digital device, pursuant to Part 15 of the FCC Rules. These limits are designed to provide reasonable protection against harmful interference in a residential installation. This equipment generates uses and can radiate radio frequency energy and, if not installed and used in accordance with the instructions, may cause harmful interference to radio communications.

However, there is no guarantee that interference will not occur in a particular installation. If this equipment does cause harmful interference to radio or television reception, which can be determined by turning the equipment off and on, the user is encouraged to try to correct the interference by one or more of the following measures:

- Reorient or relocate the receiving antenna
- Increase the separation between the equipment and receiver
- Connect the equipment into an outlet on a circuit different from that to which the receiver is connected
- Consult the dealer or an experienced radio/TV technician for help

This device complies with part 15 of the FCC rules. Operation is subject to the following two conditions:

(1) This device may not cause harmful interference, and

(2) This device must accept any interference received, including interference that may cause undesired operation.

IC Statement

This device complies with Industry Canada's licence-exempt RSSs. Operation is subject to the following two conditions:

1. This device may not cause interference; and
2. This device must accept any interference, including interference that may cause undesired operation of the device.

The term "IC:" before the certification/registration number only signifies that the Industry Canada technical specifications were met. This product meets the applicable Industry Canada technical specifications.

Warranty

If there is a functional defect due to faulty manufacturing, we will replace the product. This warranty does not cover damage that results from misuse of the product.

Attention!

If you attempt to dismantle the product for any other purpose than battery replacement, you will invalidate your warranty.

Contour Design Nordic A/S

Nyropsgade 43, 1. floor
DK-1602 Copenhagen V, Denmark
Contact Support: cd.now/support

Contour Innovations LLC

10 Industrial Drive
Windham, New Hampshire 03087, USA
Contact Support: cd.now/support

For more information please visit:

www.contourdesign.com

Tested to comply with FCC and IC standards.

