

All You Need To Know About TOGAF

Contents

The TOGAF Standard	2
So What is the TOGAF Standard?	3
TOGAF Standard Benefit	4
FAQs	6



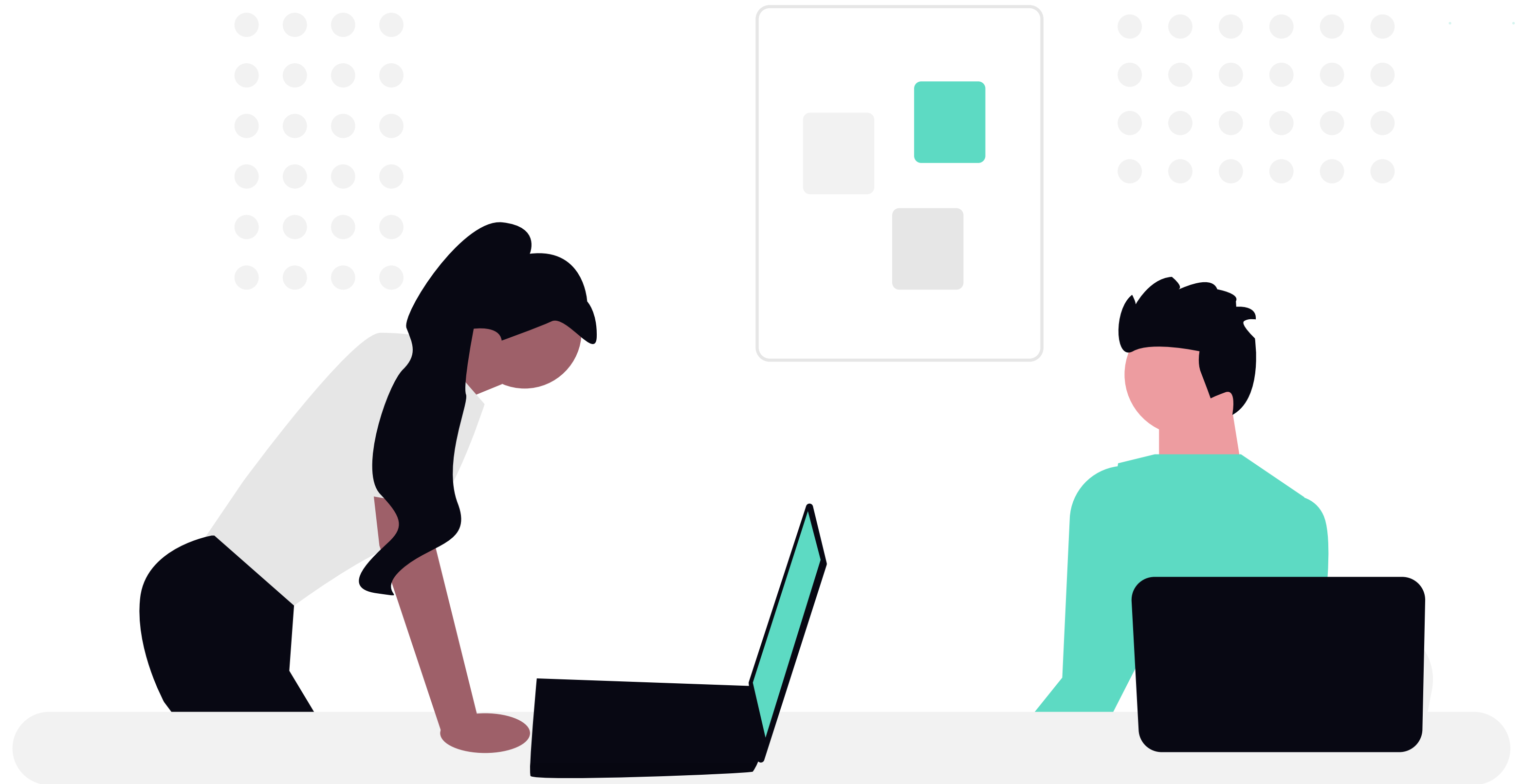
The TOGAF Standard

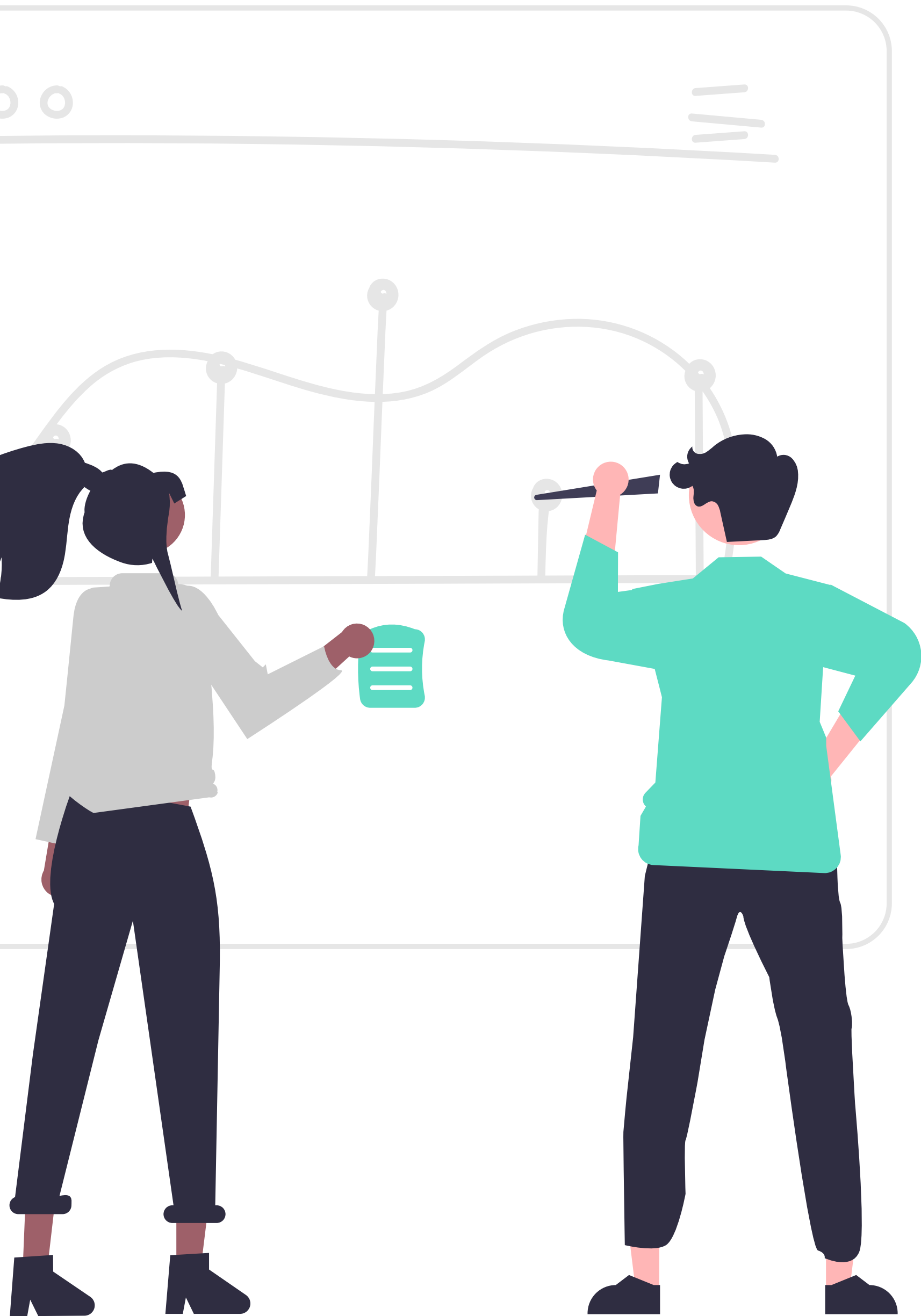
When you think of ‘**change management**’, the concept may initially seem simple and straightforward: you have an organization that operates according to a certain structure, which you then amend to boost efficiency, maximize profit et cetera. Creating a clearly defined goal and having a business work towards it is surely just common sense, right?

The reality might surprise you. Having a goal is certainly important in the world of business, but that same world won’t stop spinning to accommodate it. Managers and executives often juggle dozens of variables as they try to enable changes, all while struggling to ensure that day-to-day operations can run smoothly. The whole thing can be a logistical nightmare, one that is all-too-often weighed down by a single compromising factor: **a lack of clarity**.

In this kind of situation, change management initiatives often struggle to get off the ground. Others fail to accomplish set goals, or make it so that the resulting benefits fall far short of what was expected. Still, an organization’s ability to adapt is inherently essential for its survival, so what is the best way to drive change management with clarity and guarantee success?

This is where ‘**enterprise architecture**’ comes in. To put it simply, enterprise architecture gives organizations a clear idea of exactly what they have to work with, where they want to be, and how to get there, providing **a level of clarity that is essential for effective change management**. Just as an architect can create a detailed model of a structure, an enterprise architect can do the same for a business. However, ‘enterprise architecture’ is a specialized skill, and one that often proceeds according to a set methodology.





So What is the TOGAF Standard?

The TOGAF Standard, a standard of The Open Group, is one of the world's most popular enterprise architecture frameworks. Originally developed through collaboration between over 300 leading organizations, the TOGAF standard has been regularly updated over nearly 30 years to keep it fresh and relevant in the Digital Age. It offers **practical guidance and a standardized architecture development methodology**, which enterprise architects use for organizations of virtually every industry, size, sector, and location. So, what is it that makes the TOGAF standard stand out, and what is the value of studying it?

The TOGAF standard is a tried and tested enterprise architecture framework used all over the world. It offers a standardized process for creating architectures, known as the “**Architecture Development Method (ADM)**.” This well-structured yet versatile methodology guides users in planning, creating, and using architectures, allowing them to make progress quickly and efficiently.

The terminology of the framework is clear and consistent, making communication between practitioners simple and streamlined as they establish goals and create clear plans on how to meet them.

The TOGAF methodology breaks architectures down into distinct domains:

- Data
- Technology
- Application
- Business

These domains are not so rigid that the framework can only be used by a specific kind of organization; rather, they are factors that make up the structures of most organizations. In other words, the TOGAF standard is a **highly generalized framework that almost anyone can use**.

One of the biggest points of focus for the TOGAF standard is **ensuring that IT goals are fully aligned with major business goals, and vice versa**. Part of the appeal of having a working architecture is being able to see how different departments interact with IT, as well as judge whether IT capabilities are up to the task of supporting certain decisions.

Once the requirements of a change initiative are defined, an organization can then proceed with minimal delays or errors.

How Can The **TOGAF Standard** Benefit...

Organizations

Any company planning to implement major infrastructural changes can benefit from using the TOGAF framework, as can anyone who simply wants a clearer idea of exactly how their organization is operating and what they have to work with.

The TOGAF standard enables users to **create clear 'architectures' of specific organizational or IT infrastructures**. This includes all interconnected elements, such as different teams, departments, or projects. With this level of awareness, it is easy for stakeholders to create strategies with a clear idea of the capabilities, goals, and requirements. It can also help them predict the potential impact of different decisions.

An important thing to keep in mind is that most of the benefits of creating a clear architecture for a company are **ongoing**. It can provide **continuous clarity and perspective** for future projects, as well as simple day-to-day operations. This can do wonders in terms of efficiency, and it can even improve collaboration as more executives become aware of how their work fits into the overall company scheme.

Training for the TOGAF standard is a highly reliable investment. The framework has not only been tried and tested across thousands of organizations, but it is also **based on solid and ever-evolving practical insight**.

The methodology is also future-proof: TOGAF architectures can be reused, refined, and adapted over time as necessary, such as by adding new capabilities. This can save a great deal of time, while also making the framework **more bespoke and effective for individual users**.

One of the biggest advantages of the TOGAF standard is that it is essentially agnostic. It does not offer advice for any single specific industry, sector, or location. Rather, it provides users with **general knowledge and tools that can be adapted to suit individual organizations**. It is even compatible with other leading frameworks, such as ITIL, making it easy to incorporate into existing management strategies. TOGAF training can be particularly beneficial for companies that are planning to train multiple candidates. With a single terminology, the TOGAF standard enables easy communication and collaboration between certified users.

A company can take this last advantage to the next level by also investing in the **ArchiMate** notation, a modeling language used to visualize, analyze, and describe architectural elements. Using ArchiMate models can help enterprise architects to simplify complicated enterprise architecture concepts for stakeholders, as well as work more efficiently with other users. The ArchiMate specification is also a standard of The Open Group, so many enterprise architects will study it alongside the TOGAF standard.



How Can The **TOGAF Standard Benefit...**

Individuals

With the growing global demand for users of the TOGAF standard, becoming certified in the framework can be an excellent career stepping stone for enterprise architects. It can qualify a candidate to take on crucial responsibilities, gain impressive experience, and even unlock higher-paying roles.

Here's just some of the many reasons to gain a TOGAF certification:

- **High demand:** Top-tier organizations put a great deal of faith in certifications which set a global standard. Pursuing TOGAF training can be an excellent option for both budding and experienced enterprise architects. However, they must ensure that they take the level 1 and 2 exams via a certified test center.
- **Experience:** The TOGAF standard combines technical and managerial aspects of IT. Aspiring enterprise architects can learn how to manage multiple elements simultaneously. More importantly, they can learn what is required to design and adapt information systems architecture within a wider EA framework.
- **Networking:** Since the TOGAF standard is so widely used, professionals the world over are familiar with its terminology and framework. This creates excellent networking opportunities for architects who are on the lookout for new opportunities.
- **No qualifications necessary:** It helps to start a TOGAF training course with at least a basic knowledge of enterprise architecture. However, there are no prerequisites required to become TOGAF certified.
- **Future-proof:** Even though each version of the TOGAF standard introduces new features, the core framework remains the same. Because of this, you can continue to use the TOGAF standard even as updates are released. Rather than relearn everything from scratch, you can simply add to your knowledge as you go.

It is also worth remembering that TOGAF training teaches more than just enterprise architecture. It also incorporates managerial aspects of both architecture and IT, such as how to effectively weigh different perspectives and goals.





Since 1984, Roger Evernden has been specializing in the practical use of enterprise architecture to manage organizational transformation. His work forms the basis for more than 400 architecture initiatives worldwide including AstraZeneca, Barclays, Credit Suisse, HSBC, IBM, Microsoft, Westpac, and many more.

“There are plenty of TOGAF courses on the market. Orbus Software stand out from the rest for three important reasons:

1. An intuitive and easy to use interface
2. They go way beyond standard training requirements
3. This is all backed up by a team of knowledgeable and experienced professionals.”

FAQs

What kind of organization is the TOGAF standard suitable for?

The TOGAF standard is used by organizations of virtually every size, sector, and industry. Enterprise architecture is becoming a much more common practice for maximizing efficiency and managing complex business strategies, and this has only led to an increase in demand for TOGAF-certified architects. However, while any organization can use the TOGAF standard, it takes a certified architect to use it properly. They will have an intricate knowledge of the framework and how to apply it in practice.

Who owns the TOGAF standard?

The Open Group owns the TOGAF standard but works with customers and suppliers of technology products and services, consortia, and other standards organizations. Together, they capture, clarify, and integrate current and emerging requirements, establish standards, and policies, and share best practices.

What does the TOGAF certification path look like?

The TOGAF standard certification path is fairly straightforward. Students start with TOGAF 9 Foundation (level 1) and – after passing this exam – can then take the TOGAF 9 Certified (level 2) exam. Following this, there are three other progression routes available under the TOGAF 10 portfolio:

- TOGAF Enterprise Architecture Foundation
- TOGAF Enterprise Architecture Practitioner
- TOGAF Business Architecture Foundation

Please note: While TOGAF 10 is the latest standard, the TOGAF 9 certifications remain fully valid, do not expire, and continue to serve as the recognized prerequisites for the later certifications.

In what countries is the TOGAF standard popular?

The TOGAF framework is popular all over the world. You can find certified professionals in over 130 countries, and TOGAF architects can find work almost anywhere. That being said, there are certainly several regions where the TOGAF standard has more of a presence. The majority of TOGAF certifications are earned in the UK, USA, India, the Netherlands, and Australia.

Are there any prerequisites for studying?

There are no prerequisites for studying the TOGAF framework. The TOGAF Body of Knowledge is even freely available on The Open Group website. That said, the TOGAF certification path is a different story. A student must first pass the TOGAF Foundation (level 1) exam before they can sit the TOGAF Certified (level 2) exam.

What is the ArchiMate specification?

The ArchiMate specification, another standard of The Open Group, is designed to make communicating easier for enterprise architects. Enterprise architecture concepts can be difficult to communicate to untrained ears. The ArchiMate language makes it easy for users to visualize, describe, and analyze architectural elements in a way that everyone can understand, including non-certified stakeholders.

The ArchiMate language is primarily used to describe business processes, organizational structures, information flows, IT systems, and technical infrastructures. Designs can also vary in complexity, allowing users to adapt their work to suit unqualified or less-technical audiences.



Phone: +44 (0)203 824 2907

Email: enquiries@orbussoftware.com

Website: www.orbussoftware.com

About Orbus Software

Orbus Software is a leading global provider of enterprise transformation solutions. We aim to empower customers with a strategic decision-making platform to successfully manage complex change. Our OrbusInfinity platform enables leaders to deliver business objectives, innovate faster, and ensure enterprise resiliency, while supporting them to make more informed, responsible, and sustainable business decisions.

orbussoftware.com



Copyright © 2026 Orbus Software. All rights reserved. No part of this publication may be reproduced, resold, stored in a retrieval system or distributed in any form or by any means, electronic, mechanical, photocopied, recorded or otherwise, without our prior permission. Such requests or any other comments may be submitted to marketing@orbussoftware.com. Orbus Software® and OrbusInfinity® are registered trademarks of Seattle Holdings Limited.