

# DOHMEYER

CRYOGENIC • FREEZING • PRECISION

## Combo Chiller



# Combo Chiller



High capacity



Eliminate manual labor



Efficient CO2 usage  
– rapid payback



Operator safe



Sanitary design

The Dohmeyer Combo Chiller is a high-performance cryogenic chilling solution designed for optimal efficiency and hygiene in food processing environments. A standout feature is its rotating product funnel, ensuring even product distribution while maintaining strict hygiene standards. At the heart of its chilling performance are four high-capacity Snowhorns to deliver rapid, uniform cooling. This powerful chilling capability is enhanced by the unit's class-leading sanitary design, featuring a fully welded structure and a sloped roof to prevent any liquid accumulation, reduce cleaning time, and comply with the most rigorous food safety requirements. Designed to integrate seamlessly into automated production lines, the Combo Chiller comes equipped with HMI and PLC system, allowing for precise recipe control and repeatable performance across multiple production runs.



## 4x snow horns

with capacity of up to

## 100 lbs of snow per minute

**PRODUCTIVITY • EFFICIENCY**



**High-capacity snow horns**  
High-capacity snow horns and uniform product distribution minimize snow usage and CO<sub>2</sub> costs

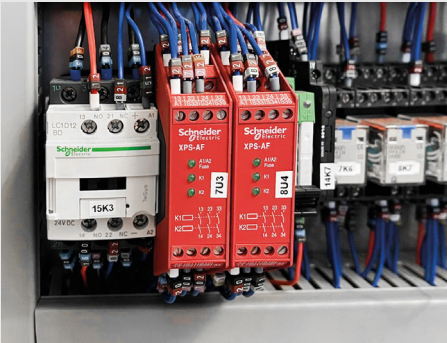


**Quick Changeover**  
Our easy entry door system allows operators to exchange combos in the shortest possible time

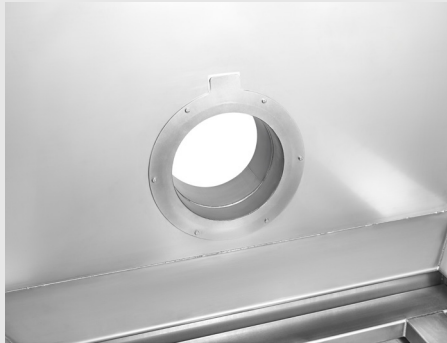


**Rotating funnel**  
The rotating funnel allows small and large products to be utilized on the same machine

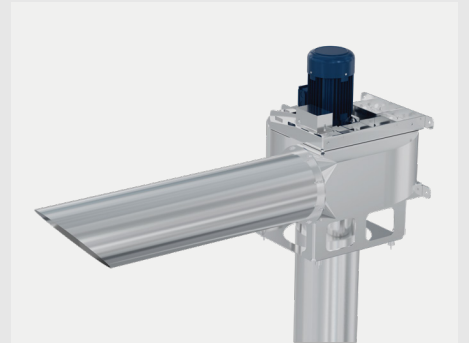
**SAFETY**



**Redundant safety loop**  
Secondary safety system provides full back up to primary safety circuit



**Exhaust vent**  
Built-in exhaust duct connection with optional heating

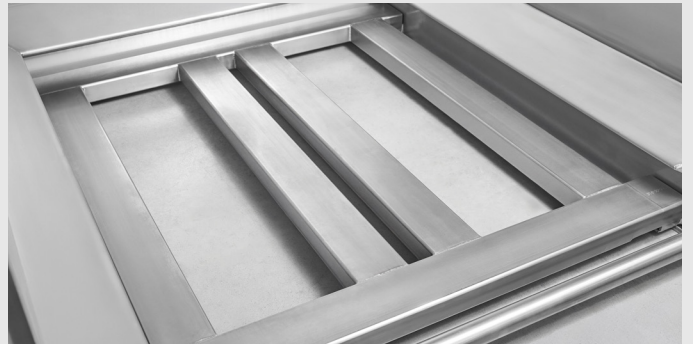


**Exhaust Fan**  
Special designed cryogenic exhaust fans to evacuate waste gases available as an option

**HYGIENE**



**Sanitary internal design**  
The rotating funnel is driven by a hidden gearbox and external gears, ensuring it remains completely sealed and sanitary. A sanitary scale can be integrated instead of our standard level sensor design. The scale is able to give a read-out of the complete weight down to final few ounces



**FLEXIBILITY**



**Adaptable Height**  
Our Combo chiller can be adapted in height based on your combo size



**Integrated control cabinet**  
Integrated control cabinet with a moveable HMI for easy operator access



**Standard HMI on all Combo Chillers**  
Our HMIs have recipe control to set-up different temperatures, weight profiles, capacity, CO<sub>2</sub> usage and real time data

# DOHMEYER

CRYOGENIC • FREEZING • PRECISION

Dohmeyer is the leading global manufacturer of cryogenic refrigeration systems for the food processing, pharmaceutical, aeronautic, plastics and steel industries.



## Support:

Dohmeyer are available 24/7 giving access to our specialist support teams providing help and advice to all our customers.



## Contact:

Poland

+48 17 774 54 70

Belgium

+32 9 241 52 22

USA

+1 (833)364-6393



[WWW.DOHEMEYER.COM](http://WWW.DOHEMEYER.COM)