



Specifications

Length	65 $\frac{3}{8}$ "
Width	41 $\frac{1}{2}$ "
Height	18 $\frac{1}{2}$ "
Immersion Depth	14 $\frac{1}{2}$ "
Shipping Weight	90 Lbs*
Water Capacity	90 US Gal*

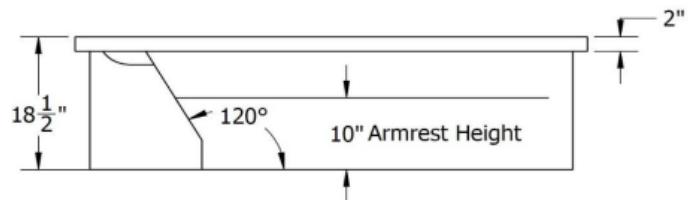
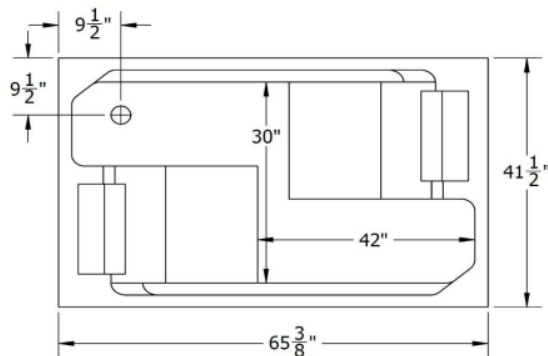
*Approximately

Product Features

- o 100% acrylic with fibreglass & wood reinforcement
- o Backrest angle: 120°
- o Backrest & Lumbar Support
- o Drain hole size 2"
- o Textured Bottom
- o 2" Deck Height
- o Two White Headrest Pillows

Available Upgrades

Elements by Venco®	✓	AirTherapy	✓
HydroTherapy	✓	ChromaTherapy	✓
External Flange	✓		



Note: ALL MEASUREMENTS ARE IN INCHES & HAVE TOLERANCE OF +/- $\frac{1}{4}$ "

While we strive to provide accurate measurements for our customers, mistakes happen.

Our goal is to help things run smoothly from shipment to installation, so if you notice any errors in our spec sheets, please let us know.

Our products are handmade & finished so you can expect a tolerance of +/- $\frac{1}{4}$ " measurements. We strongly recommend waiting until your ordered product is on-site before attempting any rough-in, carpentry, and/or plumbing.

If you want to verify any of our measurements, please feel free to call or email us.

Keeping with our policy of continuing improvement, Venco® reserves the right to change product specifications without notice. For latest specifications, please contact Venco® directly or check our website www.venco.ca



Venco Products Ltd.
7584 Vantage Place
Delta, BC
Canada V4G 1A5
Tel: +1 (604)-940-4960
www.venco.ca