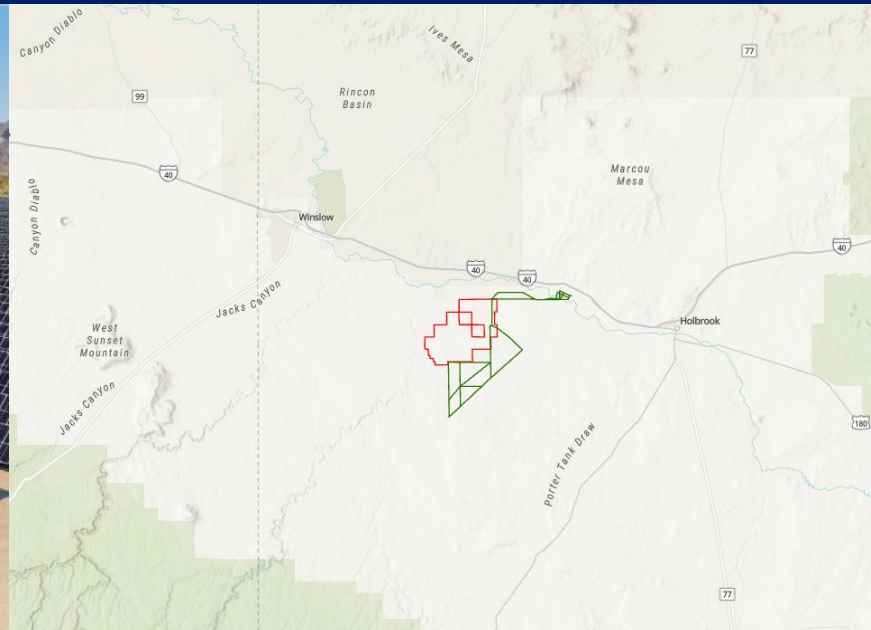




Chimney Canyon Project Open House Meeting

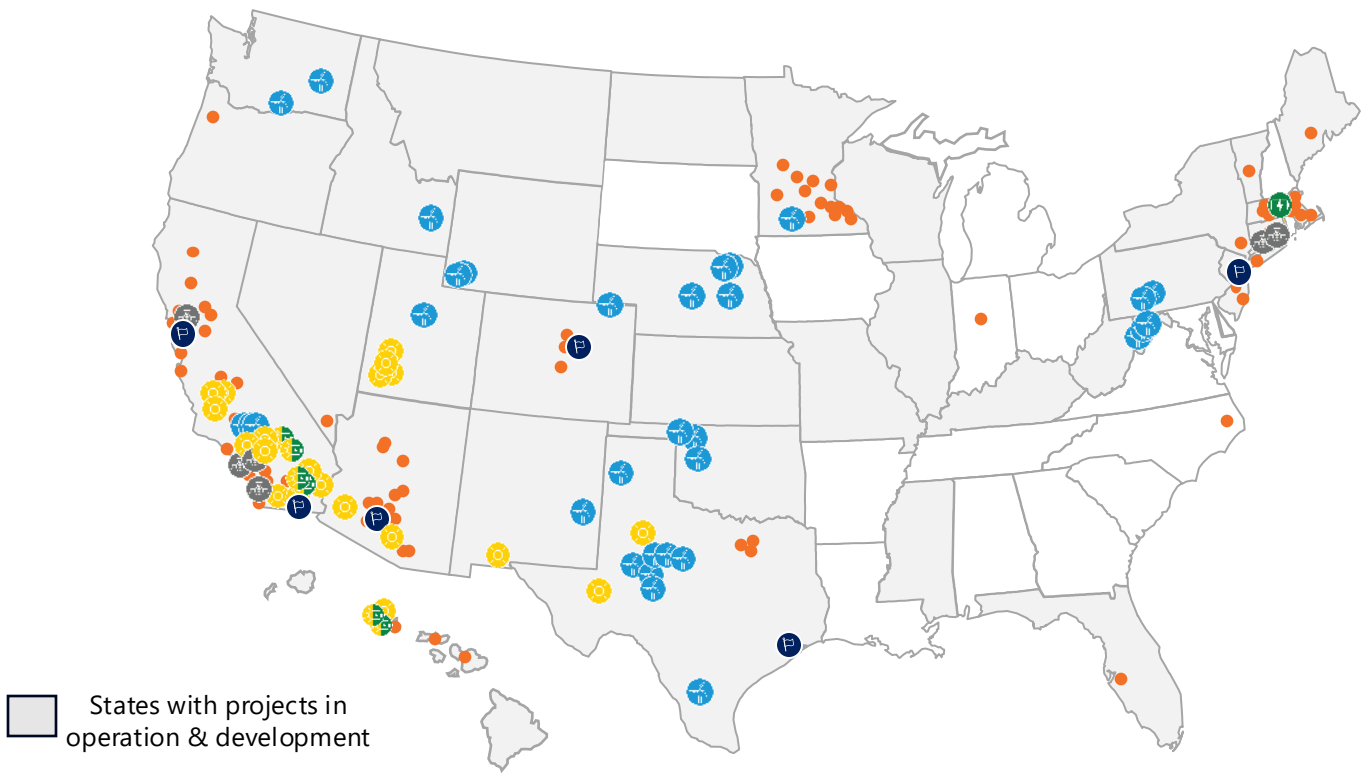
Introduction to Clearway, Our Experience & The Project

Navajo County, Arizona, May 22, 2025










Introduction to Clearway

Clearway is one of the largest renewable energy companies in the United States. We participate in every stage of our projects from origination through operations.



Clearway’s Operating Footprint

-  **11.8 GW** Gross Operating Capacity
-  **4.3 GW** Wind
-  **4.4 GW** Solar
-  **330 MW** Distributed & Community Solar
-  **730 MW** Energy Storage
-  **2.8 GW** Natural Gas
-  **6** Corporate Offices

400+

Assets under Ownership

26 States

With Projects in Operation

\$20.5 BN+

Capital Raised for Financings

100+

Customer Companies with PPAs

1,000+

Employees Nationwide

Our Vision, Mission & Values



VISION

A World Powered by Clean Energy

MISSION

To make **Clean, Competitive, and Reliable** energy

VALUES



Prioritize **Safety**



Serve our **Communities**



Support our **People**



Act with **Integrity**



Be **Accountable**



Invest Resources Wisely



Collaborate Intentionally



Improve Continuously

Project Description

- Chimney Canyon Solar and Transmission Line Project is a multi-phase Solar Photovoltaic, Battery Energy Storage System (BESS), and Transmission Line Project located south of Joseph City in Navajo County, Arizona.
- The Project is anticipated to have a total capacity of approximately 765-megawatt (MW) across all phases with up to two 9-mile generation interconnection (gen-tie) transmission lines – up to 500 kilovolt (kV).
- The first phase consists of 375-MW solar energy and battery storage, powering ~58,000 homes annually.



About The Project

- The output from the solar array and BESS would provide emission-free electricity.
- The Project would help to make up for the retired coal powered electric generation (APS Cholla Power Plant) and,
- Support future electrical generation needs.



Phase 1 Project Highlights

Economic Investment

- \$1.1 Billion invested over the project's life.

Tax Revenue

- \$55 Million in property tax contributions supporting the local school district, hospitals, first responders and public infrastructure.

Job Creation

- ~350 – 400 construction jobs
- Up to 15 full time, permanent jobs to operate, maintain, and manage the site.

Longevity

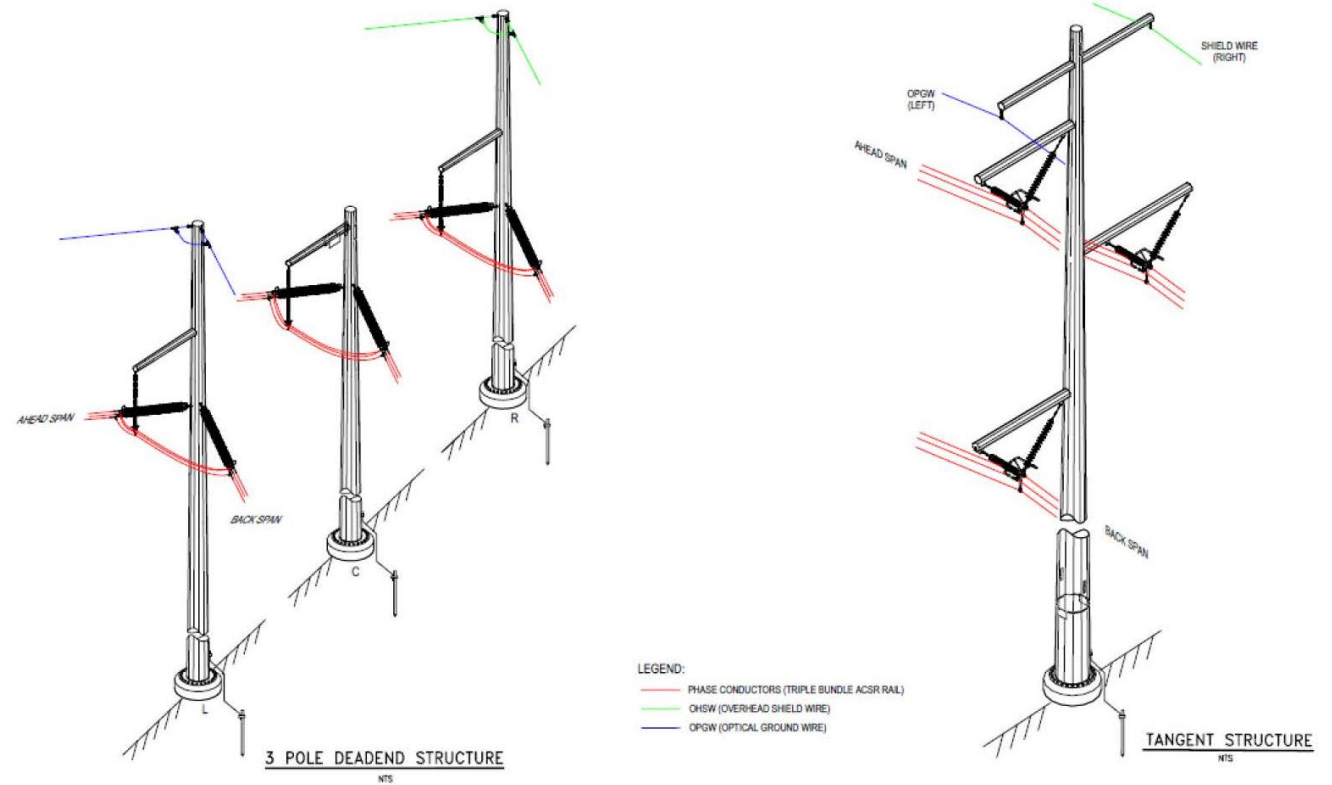
- Panels are durable and weatherproof, with onsite staff managing maintenance.
- Project has a 30-year lifetime.

Decommissioning

- End-of-life recycling ensures minimal waste and full site reclamation.

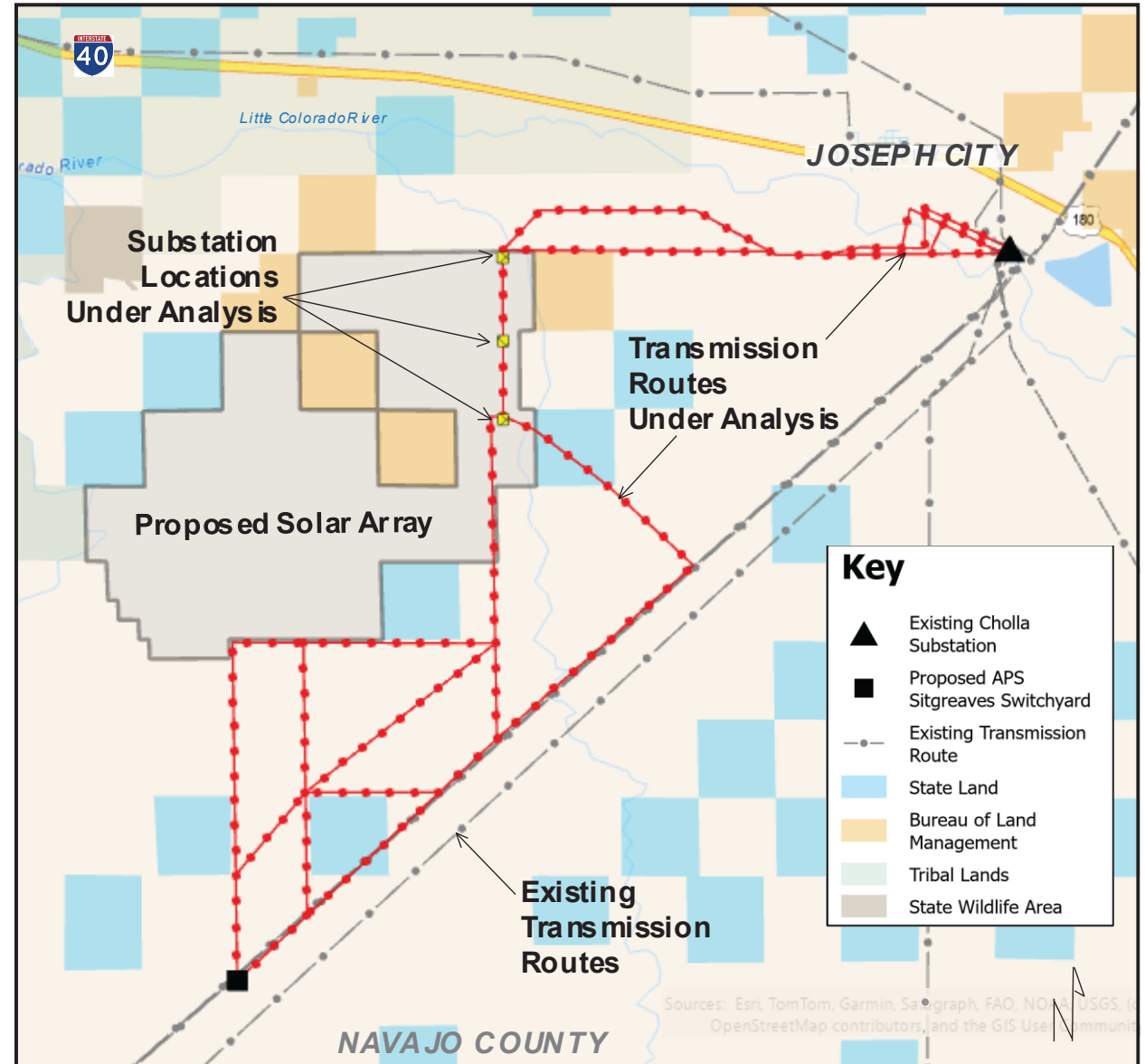
The Proposed Chimney Canyon Transmission Project Details

- Single monopole structures
- Up to 500kV single circuit
- Up to 180-200 feet tall
- Typical spacing approximately 800-1,200 feet apart
- Typical caisson foundations 40-60 feet deep (blasting may be required for some structures)
- Will utilize existing access to the extent practical to construct
- Sensitive resources will be spanned and not impacted to the extent possible



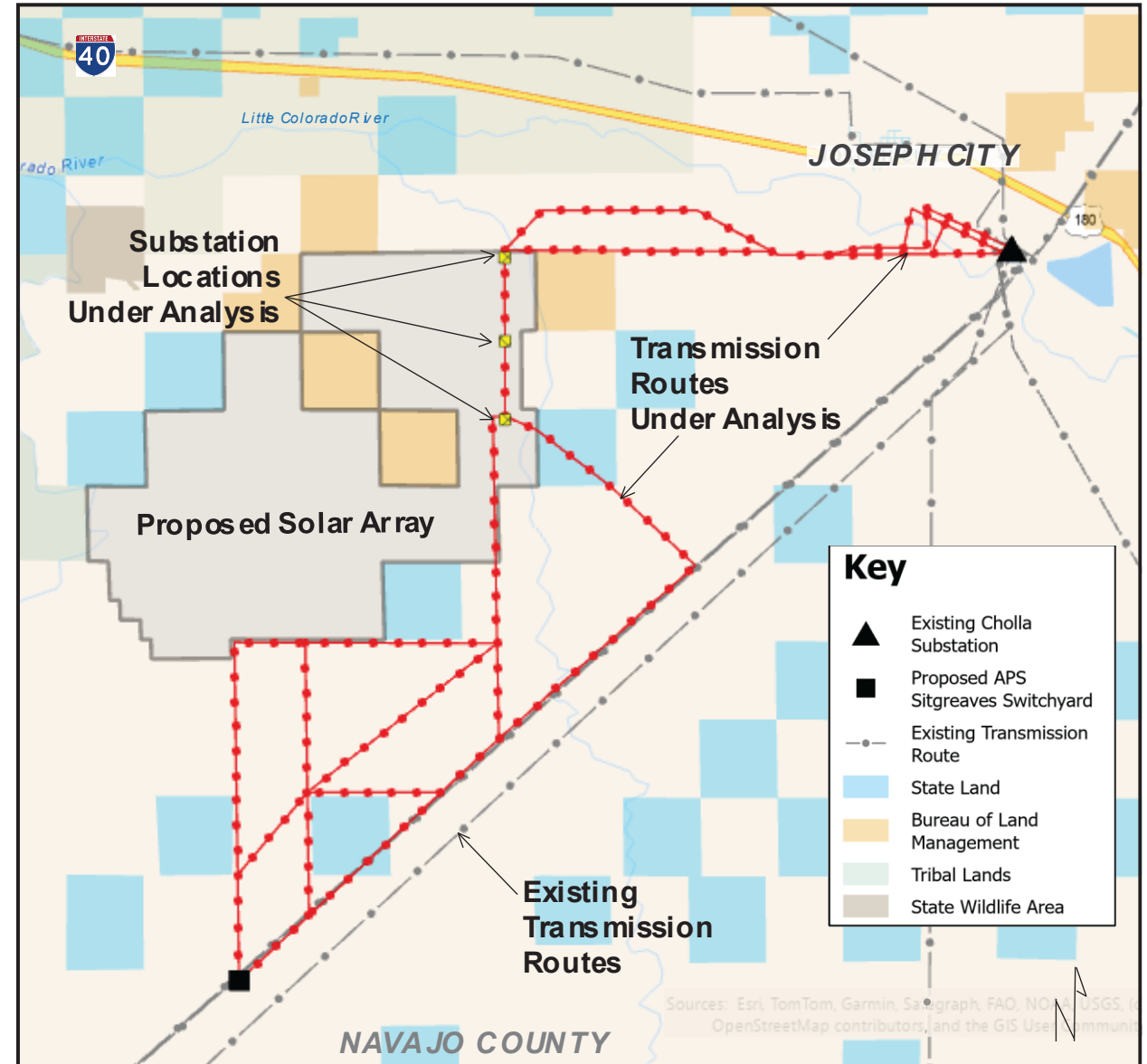
Certificate of Environmental Compatibility

- Certificate of Environmental Compatibility (CEC) from the Arizona Corporation Commission required for new transmission lines over 115kV, more than a mile, long, and having more than 5 structures.
- Project is currently evaluating multiple transmission routes and project substation locations.
- Interconnection locations
 - Existing APS Cholla Substation
 - Proposed APS Sitgreaves Switchyard



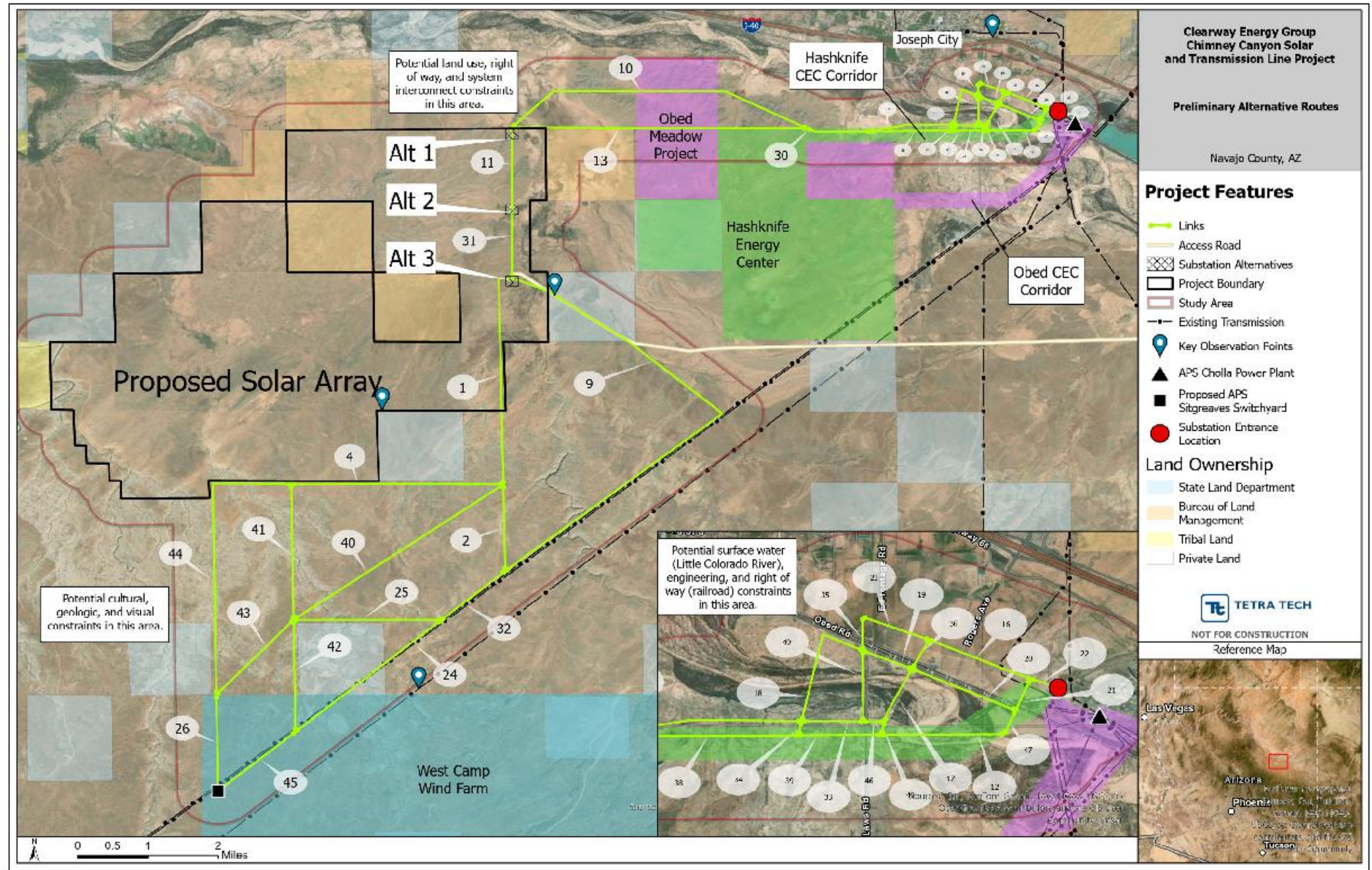
Routing Considerations

- Public Input
- Land use
- Visual resources
- Geologic factors (fissures, sinks)
- Sensitive resources
 - Cultural
 - Biological
 - Aquatic
- Engineering requirements
- System requirements
- Economic considerations



Next Steps

- Comparison and ranking of alternative routes



Project Schedule



*CEC = Certificate of Environmental Compatibility

**ACC = Arizona Corporation Commission

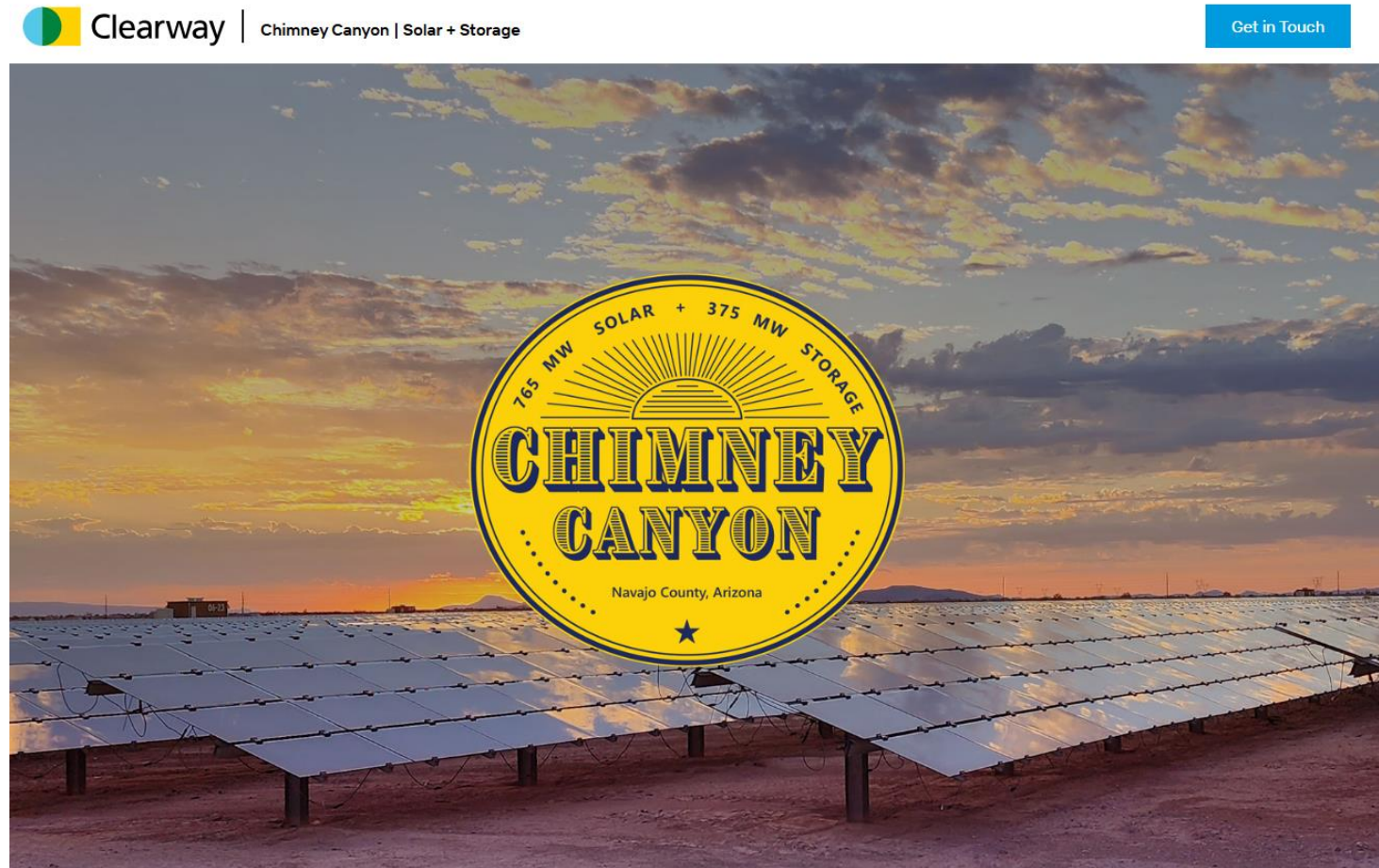
- Construction anticipated to begin as early as Q1 2027



How To Get In Touch

- www.ChimneyCanyonSolar.com
- ChimneyCanyonSolar@ClearwayEnergy.com
- (480) 424-1660

- Please send us your comments and questions by **June 23, 2025**.



Thank You

Deandra Cass

Deandra.Cass@ClearwayEnergy.com

Patty Hardesty

Patty.Hardesty@tetrattech.com

Jake Almquist

jake.almquist@clearwayenergy.com

