

AUDIO PATCH PRODUCTS

ACCESSORIES



Bantam Audio Patch Cords	
Part Number	PCORDB**BLA
Style	Bantam
**Lengths Available	12" (300mm) 18" (450mm) 24" (600mm) 36" (900mm)
Colour	Black as standard.
Features	Manufactured with high quality cable and strain relief boots.

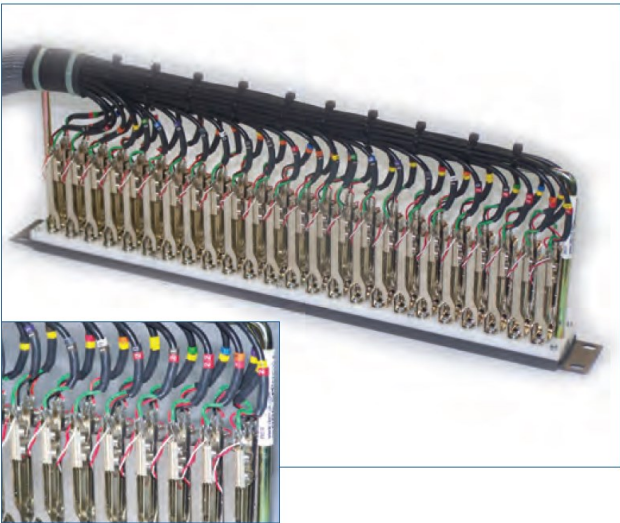


Audio Pre-Wiring

Pre-wiring of audio jackfields can be carried out to customer specifications.

Typical requirements include:

- Overall Screened Cable
- Individually Screened Cable
- Half-normalled
- Fully-normalled
- Double-normalled
- Rear termination via loom, or attached to rear bracket
- Krone Connectors
- TAG Blocks
- EDACS



AUDIO PATCH PRODUCTS

BANTAM PATCH PANELS

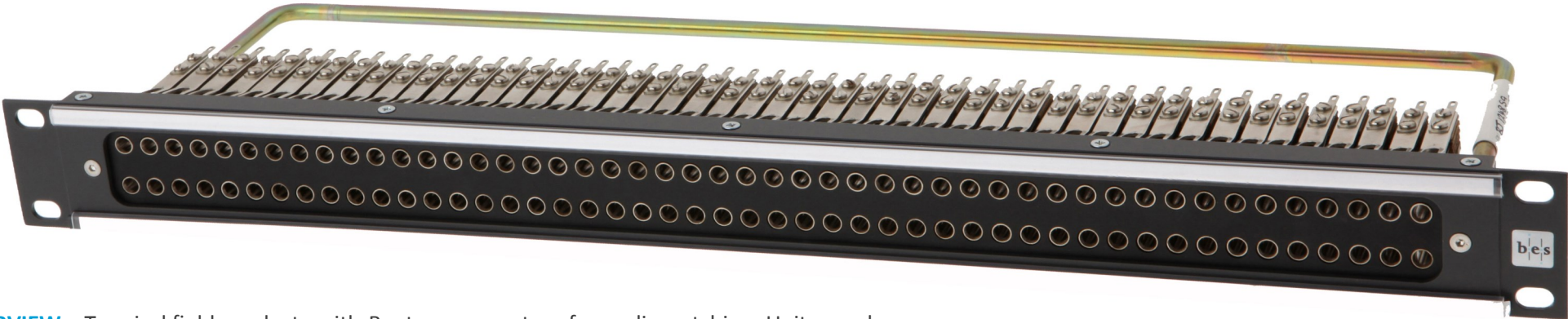


To obtain a quote:

Call: +44 (0)1724 273224

Email: sales@dem-uk.com

- Robust Construction
- Bantam 5 Point Audio Connectors
- High Density Patching
- Up to 2 x 48 Connectors
- Rigid Aluminium Alloy Extrusion
- Electrically Isolated Sockets
- Can be Pre-wired to Order
- Range of Accessories (See pg2)
- Choice of Panel Colours



OVERVIEW - Two jackfield products with Bantam connectors for audio patching. Units can be pre-wired to order, with a number of termination options.

FEATURES - A machined extruded aluminium front panels offers a robust construction, combined with Bantam 5 point audio sockets for increased density with up to 96 connectors a panel, mounted on a machined sub-panel. Improved designation strips maximise visible area of paper and clip-on clear plastic retaining covers for ease of assembly. Lacing bar supplied as standard.

FINISH - Standard Storm Grey powder coating for an excellent finish and robustness. Dawn Grey or Black also available.

Product Code	Description
BJF1240**	Bantam Patch Panel 1U 2 x 40
BJF1248**	Bantam Patch Panel 1U 2 x 48

**Colour Options: SG (Storm Grey), DG (Dawn Grey) and BK (Black)

Connector Specifications	
Electrical	Contact Resistance: 20mW
	Insulation Resistance: >1 GW
	Dielectric Withstanding Voltage: 1kVdc
Mechanical	Life: >5,000 cycles
	Withdrawal Force: >8 N
	Insertion Force: <10 N