

RES80 Chassis Mounted Filter

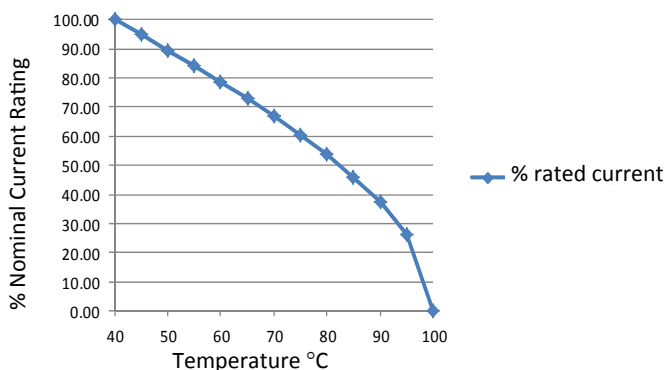
Multi-Stage, High Differential and High Common Mode

The RES80 series of multi-stage EMC filters from Roxburgh are designed for quick and easy chassis mounting. Featuring high differential mode and high common mode attenuation, this series has good low frequency attenuation.

These general purpose filters are suitable for a broad range of applications including noisy environments where increased filter performance is required.



**Temperature Derating Curve for EMC Filters
Rated at 40°C Ambient and 100°C Maximum**



Call us on:

+44 (0) 1724 273200

Features:

- Multi-stage
- High differential and high common mode attenuation
- Good low frequency attenuation
- UL approved E191581
- For use from DC to 400Hz

Benefits:

- Compact size for rated current
- Fast-on, screw or wire terminations
- Quick and Easy Mounting

Application Examples:

- Lighting
- Drives
- Electrical and electronic equipment
- Consumer goods
- Household equipment
- Building automation
- Machinery
- Electronic data/communication processing equipment

Full technical specification on page 2

Performance Curves on page 3

Other options in this range on page 4

DEM Manufacturing

Deltron Emcon House
Hargreaves Way
Sawcliffe Industrial Park
Scunthorpe, North Lincolnshire.
DN15 8RF

ROXBURGH EMC

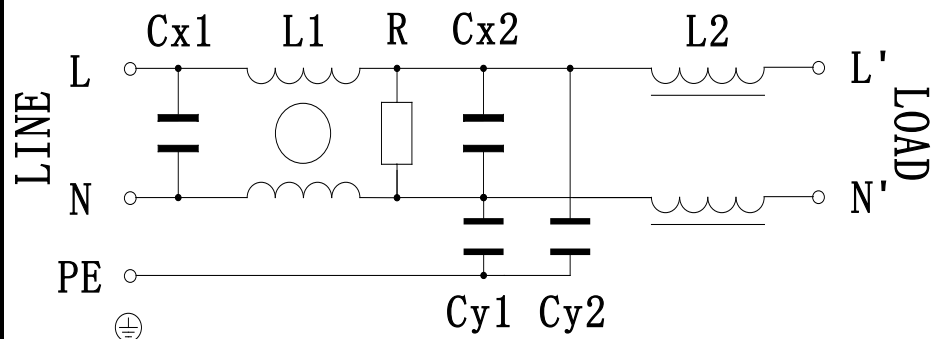


Tel: +44 (0) 1724 273200

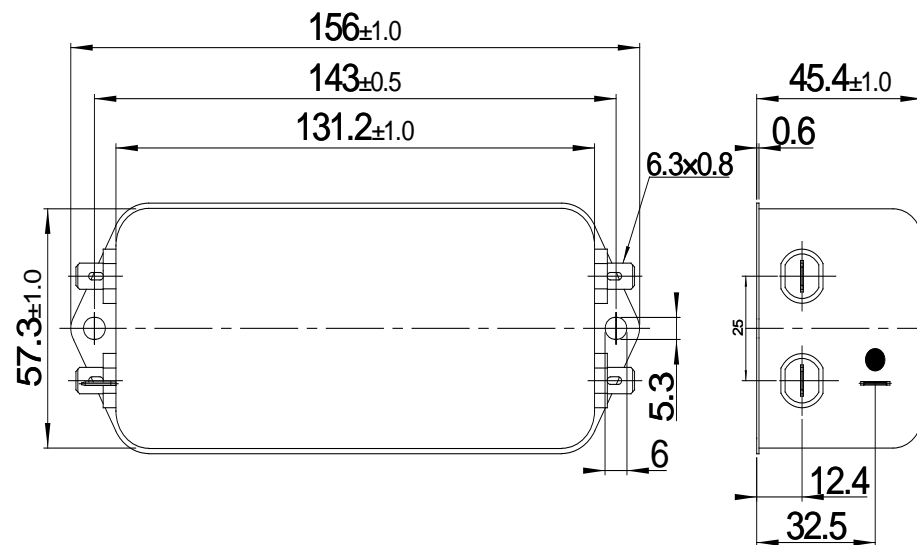
Email: sales@dem-uk.com

Web: www.dem-uk.com/roxburgh

Circuit diagram:



Dimensions(mm):



Electrical parameters:

Rated Voltage:	120/250VAC
Rated Current at an ambient temp:	10A@40°C
Operating Frequency:	50/60Hz
Climatic Class(IEC60068-1):	25/100/21
Operational Leakage current: (at 250VAC/50Hz and Total C +/-20%)	0.8mA max (RES80F10-M 0mA)
Operational Leakage current: (at 120VAC/60Hz and Total C +/-20%)	0.46mA max (RES80F10-M 0mA)
Test Voltage(100%)for 2 sec: L-N: L/N-PE:	
	1100VDC/20mA
	2250VDC/20mA

Filter parameters:

Total Inductance(L-L'/N-N'):	4.56mH +50%,-35%
Total Capacitance(L-N/L'-N'):	2uF +/-20%
Total Capacitance(L/N-PE) (RES80F10-M):	9.4nF +/-20% (0nF)
Total Resistance(L-N/L'-N'):	220K Ω +/-10%
Weight(Approximate):	650g

Safety certification

UL	<input checked="" type="checkbox"/>	CSA	<input checked="" type="checkbox"/>
ENEC	<input checked="" type="checkbox"/>	CQC	<input type="checkbox"/>
CE	<input checked="" type="checkbox"/>	VDE	<input type="checkbox"/>

Technical Specification

compiled by	Jay Zhang	2020-8-5
reviewed by	Pallas Wang	2020-8-5
approved by	Henry Huang	2020-8-5



+44 (0)1724 273200
sales@dem-uk.com
www.dem-uk.com/roxburgh

Part **RES80F10**

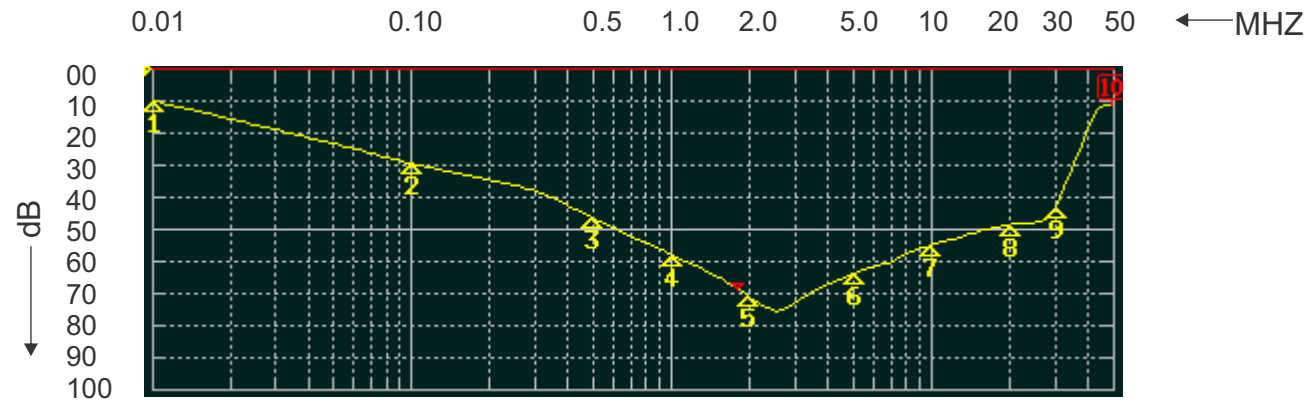
Number (Alternate RES80F10-M - no Y caps)

single-phase emc filter

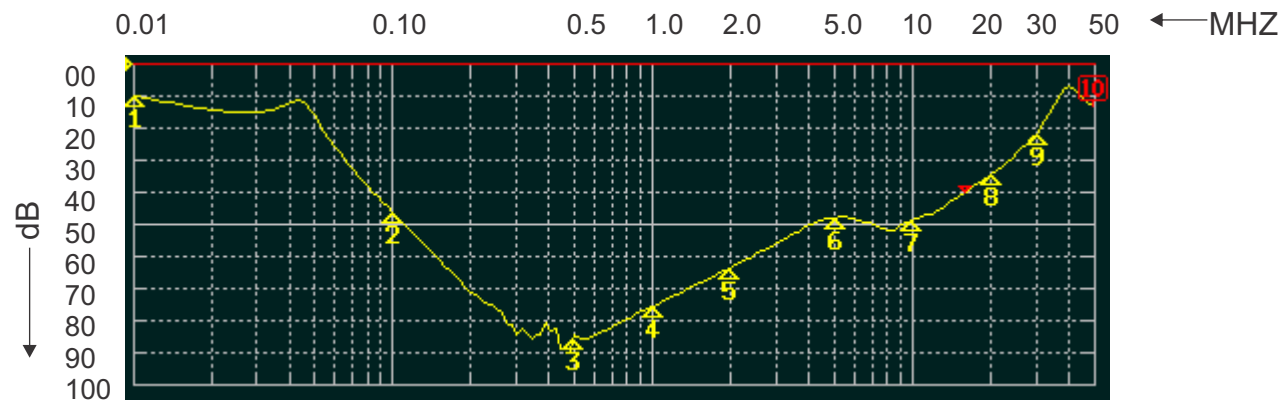
stage marker	V1.03
--------------	-------

ROXBURGH EMC
FILTER INSERTION LOSS CHARACTERISTICS
CISPR 17 - 50 OHM METHOD

RES80F10



COMMON MODE






DIFFERENTIAL MODE



RES80 Chassis Mounted Filter

Multi-Stage, High Differential and High Common Mode

Options Available:

Part Number	Rated Current @40°C A	Leakage Current @ 230V/50Hz mA	Inductance ΣL mH	Capacitance ΣCx uF	Capacitance ΣCy nF	Resistance ΣR K Ω	Connection Type		
									
RES80F01	1	0.73	22.4	0.66	9.4	1000	F	W	
RES80F03	3	0.73	9.96	0.94	9.4	470	F	W	
RES80F06	6	0.73	7.91	2	9.4	220	F	W	
RES80F10	10	0.73	4.56	2	9.4	220	F	W	
RES80F12	12	0.73	3.30	2	9.4	220	F	W	
RES80F16	16	0.73	2.84	2	9.4	220	F	W	S

Call us on:

+44 (0) 1724 273200



DEM Manufacturing

Deltron Emcon House, Hargreaves Way, Sawcliffe Industrial Park,
Scunthorpe, North Lincolnshire, DN15 8RF

Tel: +44 (0) 1724 273200

Email: sales@dem-uk.com

Web: www.dem-uk.com/roxburgh