

# Heavy Duty Low Cost Enclosures

## Technical Specification

Deltron's entry level Heavy Duty Low Cost enclosure is ideal for robust applications where moisture or dust ingress protection is not critical to the performance of the electronics housed inside.

In line with our IP rated Heavy Duty enclosures these are supplied with DIN rail stand-offs, base plate mounting kits and internal earth points.

We also offer a complete enclosure customisation service including machining, painting, printing, assembly and more. Visit our services page on our website for further details.



**Call us on:**

**+44 (0)1724 273200**

### Features:

- Supplied complete with lid, captive screws and earth screws
- PCB card guides and stand-offs
- DIN rail mounting points

### Typical Applications:

- Industrial Controls
- Security
- Transportation

### Standard Sizes Available:

|                |                 |
|----------------|-----------------|
| 125 x 125 x 80 | 220 x 120 x 80  |
| 125 x 125 x 90 | 220 x 120 x 90  |
| 130 x 80 x 60  | 260 x 160 x 90  |
| 160 x 160 x 90 | 260 x 160 x 120 |

### Standard Finishes Available:

Plain  
Powder Coated  
Nylon Coated

**See page 2 for dimensions**

### DEM Manufacturing

Deltron Emcon House

Hargreaves Way, Sawcliffe Industrial Park

Scunthorpe, North Lincolnshire

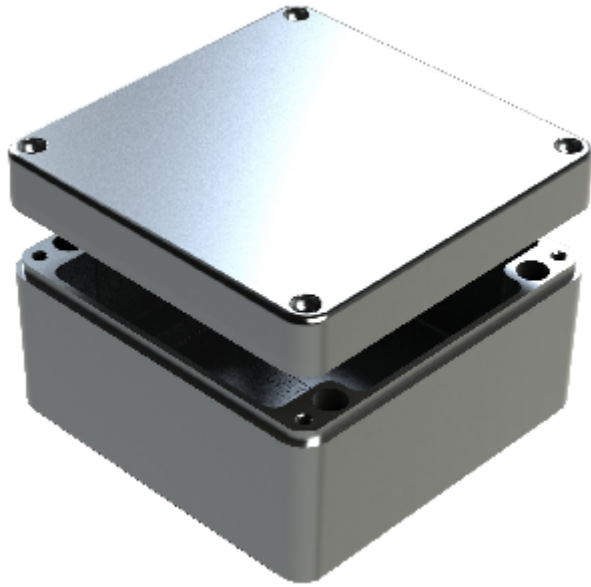
DN15 8RF



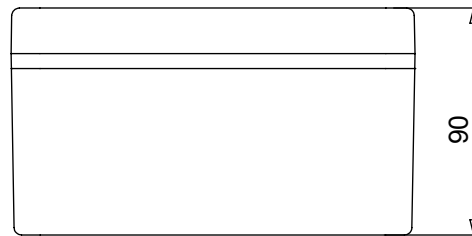
Tel: 44 (0) 1724 273200

Email: [sales@dem-uk.com](mailto:sales@dem-uk.com)

Web: [www.dem-uk.com/deltron-enclosures](http://www.dem-uk.com/deltron-enclosures)

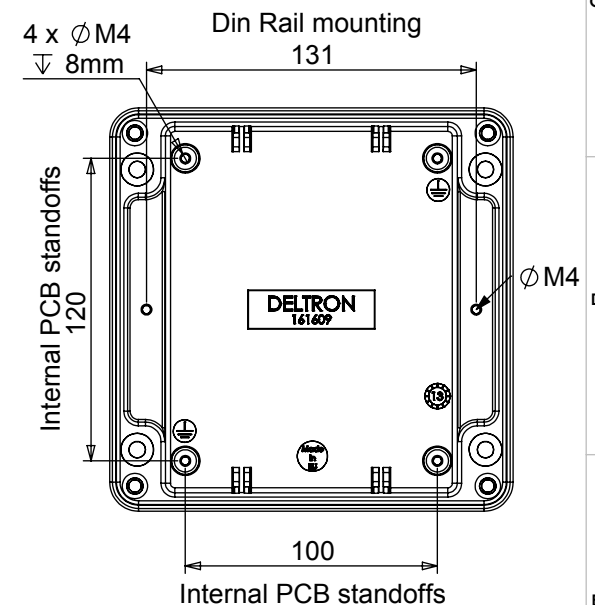
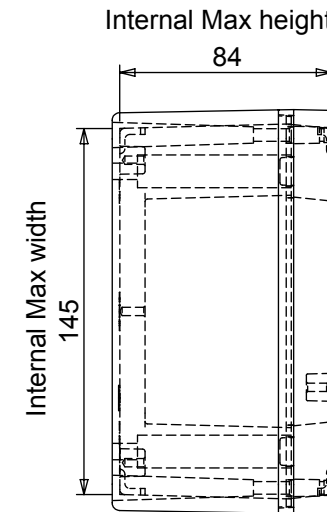
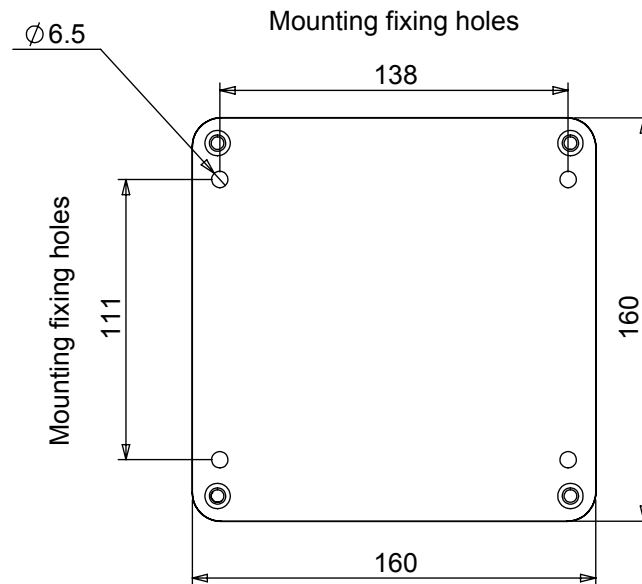
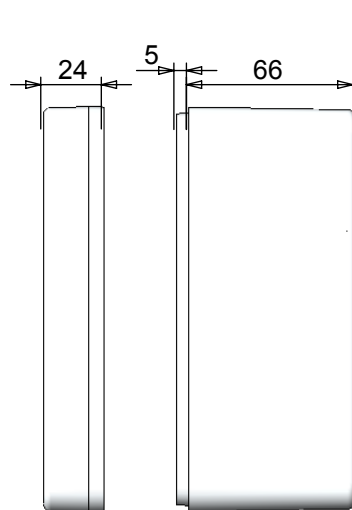


| Length               | Width | Height | Un-Painted   | Powder Coat | Nylon Coat  |
|----------------------|-------|--------|--|-------------|-------------|
| 160                  | 160   | 90     | 486-161609   | 487-161609* | 488-161609* |
| Box Dimensions in mm |       |        | Colour Option - Colour suffix * - Grey= A / Blue= B / Black= E |             |             |



Die cast aluminium enclosure sealed to

- Min enclosure wall thickness 3mm
- Min enclosure lid thickness 3mm
- PCB maximum dimensions 111mm length 1.7mm width
- Enclosures can be supplied machined to your specifications



Tel No. +44(0)1724 273200 Website www.dem-uk.com



PROPRIETARY AND CONFIDENTIAL  
THE INFORMATION CONTAINED IN THIS DRAWING IS THE SOLE PROPERTY OF  
ALPHA 3 MANUFACTURING.  
ANY REPRODUCTION IN PART OR AS A WHOLE WITHOUT THE WRITTEN PERMISSION OF  
ALPHA 3 MANUFACTURING IS PROHIBITED.



UNLESS OTHERWISE SPECIFIED:  
DIMENSIONS ARE IN MILLIMETRES.  
TOLERANCE:  
**NO DECIMAL PLACES ±0.2mm**  
**1 DECIMAL PLACE ±0.1mm**  
**2 DECIMAL PLACES ±0.05mm**  
**ANGULAR TOLERANCE: ±1°**

|          |                                |                                 |
|----------|--------------------------------|---------------------------------|
| FINISH   | -<br>See paint code for colour | DEBURR AND BREAK<br>SHARP EDGES |
| MATERIAL | LM24/LM2                       |                                 |

|                        |              |
|------------------------|--------------|
| DRAWN BY               | SPB          |
| APPROVED BY            | WC           |
| THIRD ANGLE PROJECTION |              |
|                        | SHEET 1 OF 1 |
|                        | SCALE 1:3    |
|                        | A4           |

|             |                                  |
|-------------|----------------------------------|
| TITLE       | Heavy Duty<br>Die-Cast Enclosure |
| DRAWING NO. | 486-161609                       |
| ISSUE       | 02                               |
|             | Release                          |