

# IP66 Heavy Duty Enclosures

## Technical Specification

This series has been designed for resistance to tougher environments where a hardwearing box, combined with ingress protection may be required.

Sealed to IP66, they are dust proof, splash proof and protected from powerful jets of water. Eight sizes are available comprising PCB guides, DIN rail mounting points, lid, seal, captive screws and earth screws.

The range can be finished in plain aluminium, or painted and coated for added resistance to abrasion, oils, corrosion and diluted acids.



**For more information:**

Phone: +44 (0)1724 273206

### Features:

- IP66 (BS EN 60529:1992)
- Heavy Duty
- Manufactured from LM2/LM24
- RoHS Compliant

### Typical Applications:

- Test & Measurement Equipment
- CCTV/Surveillance Tools
- Traffic Management Equipment
- Water Treatment

### Available Dimensions:

|                  |                   |
|------------------|-------------------|
| 125 x 125 x 80mm | 220 x 120 x 80mm  |
| 125 x 125 x 90mm | 220 x 120 x 90mm  |
| 130 x 80 x 60mm  | 260 x 160 x 90mm  |
| 160 x 160 x 90mm | 260 x 160 x 120mm |

**Finishes:** Plain Aluminium, Powder or Nylon Coat

**Colours:** Grey, Blue or Black when a powder or nylon coating is selected.

**Customisation:** We can machine and customise the enclosures to meet your specification.

- Visit our website for a complete services list.

### DEM Manufacturing

Deltron Emcon House,  
Hargreaves Way,  
Sawcliffe Industrial Park,  
Scunthorpe, DN15 8RF.

**DELTRON** *Enclosures*

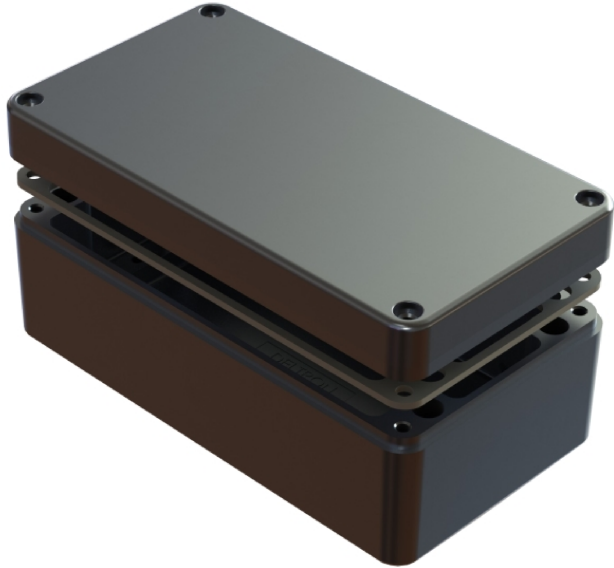
Web: [www.dem-uk.com/deltron-enclosures](http://www.dem-uk.com/deltron-enclosures)

Tel: +44 (0) 1724 273206

Fax: +44 (0) 1724 280353

Email: [sales@dem-uk.com](mailto:sales@dem-uk.com)

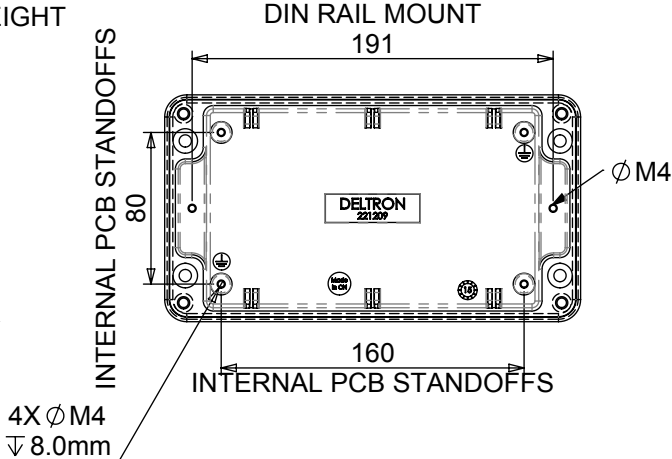
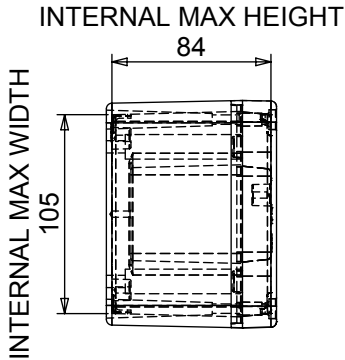
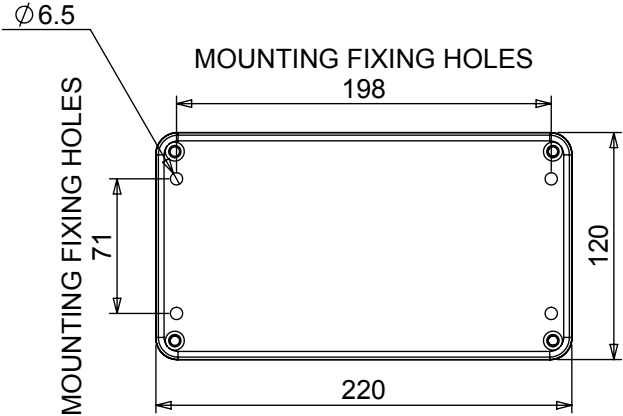
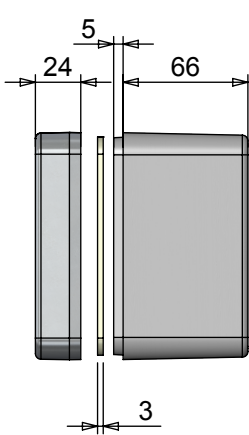
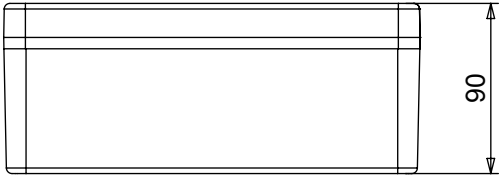
| REV | DATE        | ECN NUMBER | ECR COMMENT                             |  |  |  |  |  |
|-----|-------------|------------|---|--|--|--|--|--|
| 007 | 06 Jun 2017 | 4833/4835  | <br><br><br><br>                        |  |  |  |  |  |
| 006 | 05 Jun 2017 | 4833/4835  | CHANGE MADE IN UK TEXT TO MADE IN CHINA |  |  |  |  |  |



| Length               | Width | Height | Un-Painted   | Powder Coat    | Nylon Coat     |
|----------------------|-------|--------|--|----------------|----------------|
| 220                  | 120   | 90     | 486-221209-66  | 487-221209*-66 | 488-221209*-66 |
| Box Dimensions in mm |       |        | Colour Option - Colour suffix * - Grey= A / Blue= B / Black= E |                |                |

DIE CAST ALUMINIUM ENCLOSURE SEALED TO  
BS EN 60529:1992 IP66, IP67

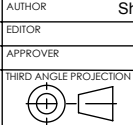
- 3mm One piece Die cut Silicone Rubber Sponge 01-255FR Seal
- Seal has Self Adhesive Backing. 01-255SAB Suitable for-60 °c to 240 °c.
- Min seal thickness 3.0mm - min seal frame width 3.5mm
- Min enclosure wall thickness 3mm
- Min enclosure lid thickness 3mm
- PCB Maximum dimensions 105mm Length, 1.7mm Width
- Enclosures can be supplied Machined to your specifications
- Made in the China.
- Clean seal face using toluene solution or white spirits prior to fitting the seal, only required on unpainted enclosures



**PROPRIETARY AND CONFIDENTIAL:**  
THE INFORMATION CONTAINED IN THIS DRAWING IS THE SOLE PROPERTY OF **ALPHA 3 MANUFACTURING**. ANY REPRODUCTION IN PART OR AS A WHOLE WITHOUT THE WRITTEN PERMISSION OF **ALPHA 3 MANUFACTURING** IS PROHIBITED.  
DEM Manufacturing is a division of Alpha 3 Manufacturing LTD  
DEM Manufacturing, Deltron Emcon House, Hargreaves Way, Sawcliffe Ind. Park, Scunthorpe, North Lincolnshire, DN15 8RF, UK

UNLESS OTHERWISE SPECIFIED  
DIMENSIONS ARE IN MILLIMETRES  
LINEAR & RADIAL TOLERANCE:  
**NO DECIMAL PLACES**  
**1 DECIMAL PLACE**  
**2 DECIMAL PLACES**  
**ANGULAR TOLERANCE:**

**IF IN DOUBT ASK! DO NOT SCALE DRAWING!**  
FINISH SEE NOTES  
MATERIAL LM24 / LM2  
THE FINISHED PRODUCT SHOULD BE CLEAN AND FREE FROM ALL LIQUIDS AND DEBRIS. SURFACES SHOULD BE OF UNIFORM APPEARANCE FREE FROM SHARP EDGES, BURRS AND CORROSION



|                        |              |                             |                       |
|------------------------|--------------|-----------------------------|-----------------------|
| AUTHOR Shaun Barron    |              | TITLE HEAVY DUTY ENCL' IP66 |                       |
| EDITOR DT              |              | FILE 486-221209-66          |                       |
| APPROVER DT            |              | PART                        |                       |
| THIRD ANGLE PROJECTION | SHEET 1 OF 1 | ISSUE/REV. 007              | VERSION 15            |
|                        | SCALE 1:4 A4 | RELEASED                    | EDIT DATE 06 Jun 2017 |