

# IP68 EMI/RFI General Purpose Enclosures

## Technical Specification

Enhanced EMI/RFI protection is offered through the incorporation of a semi-conductive sealing mechanism which maintains conductivity between the lid and the enclosure, whilst preventing ingress of dust and water.

15 sizes are available, complete with silicone gasket, lid screws, and PCB guides on selected sizes. Nine sizes are also available with flanges for easy mounting.

Deltron Enclosures can customise any enclosure in our UK factory, including machining, painting, finishing, component sourcing and installation to meet your specification, save time and cut your costs. View our Services page on our website for more information.



**For more information:**

Phone: +44 (0)1724 273200

### Features:

- Enhanced EMI/RFI Protection
- IP68 Rated
- Manufactured from ADC12
- Certified to BS EN 60529:1992
- Silicone Seal

### Typical Applications:

- Marine
- Water Treatment
- Military
- Food Processing
- Aerospace

### Available Dimensions:

89 x 35 x 31*	114 x 64 x 31*
114 x 89 x 56*	114 x 65 x 56*
172 x 121 x 56*	172 x 121 x 107*
222 x 146 x 56*	222 x 146 x 107
275 x 175 x 66	140 x 102 x 77*
165 x 127 x 77	120 x 100 x 36*
250 x 250 x 100	80 x 55 x 26
60 x 55 x 31	*= Available with Flanges

**Finishes:** Plain Aluminium, Powder or Nylon coat.

**Coating Colours:** Grey, Blue or Black.

**Spares:** Gaskets and Screws.

Or choose to have your enclosure customised for bespoke finishes and colours.

**DELTRON** *Enclosures*

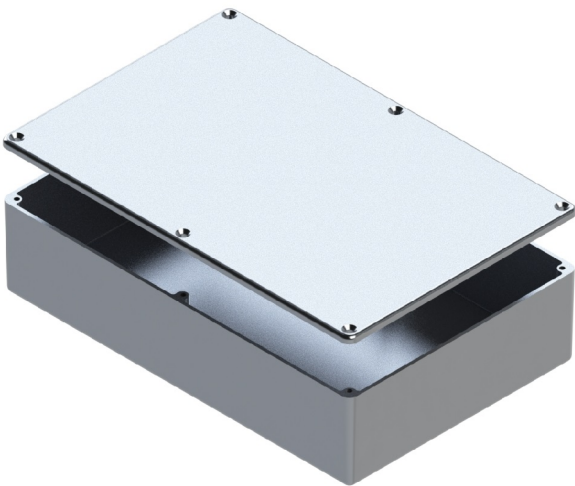
### DEM Manufacturing

Deltron Emcon House,  
Hargreaves Way,  
Sawcliffe Industrial Park,  
Scunthorpe, DN15 8RF.

Web: [www.dem-uk.com/deltron-enclosures](http://www.dem-uk.com/deltron-enclosures)

Tel: +44 (0)1724 273200

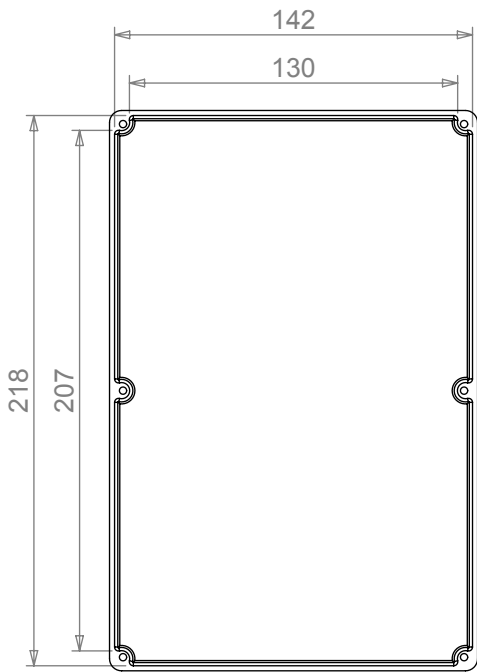
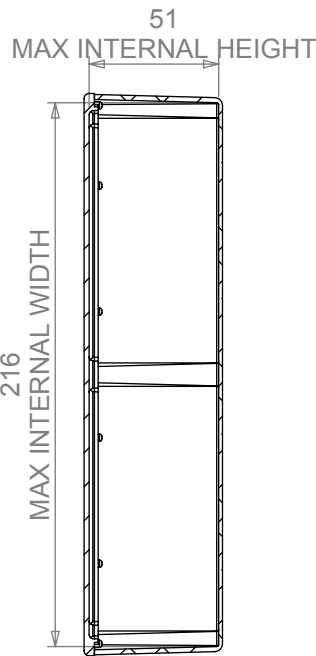
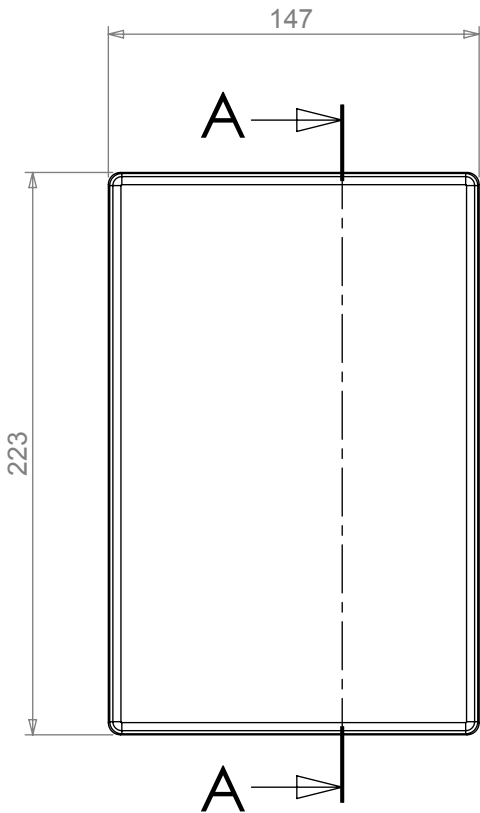
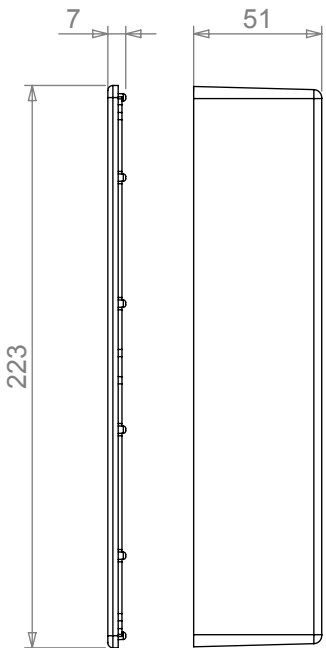
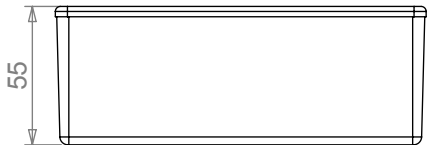
Email: [sales@dem-uk.com](mailto:sales@dem-uk.com)



LENGTH	WIDTH	HEIGHT	SEAL	PLAIN	POWDER COAT	NYLON COAT
223	147	55	NONE	459-0070	461-0070*	462-0070*
			IP66	460-0070	453-0070*	454-0070*
			IP68	480-0070	481-0070*	482-0070*
			IP68 EMI/RFI	480-C070	481-C070*	482-C070*
BOX DIMENSION IN MM			COLOUR OPTION - COLOUR SUFFIX * GREY=A / BLUE=B / BLACK = E			

#### STANDARD DUTY ENCLOSURE

- Material grade ADC12/LM2 Die Cast Alloy
- IP Rated available
- Min wall thickness 1.5mm
- Min lid thickness 1.5mm
- Fine textured powder coating and smooth nylon
- Screws stainless steel
- IP68 Tested to 5 metres for 1 hour
- Enclosures can be supplied fully factory customised to your specification



SECTION A-A

Tel No. +44(0)1724 273200 Website [www.dem-uk.com](http://www.dem-uk.com)



**PROPRIETARY AND CONFIDENTIAL**  
 THE INFORMATION CONTAINED IN THIS DRAWING IS THE SOLE PROPERTY OF  
**ALPHA 3 MANUFACTURING.**  
 ANY REPRODUCTION IN PART OR AS A WHOLE WITHOUT THE WRITTEN PERMISSION OF  
**ALPHA 3 MANUFACTURING** IS PROHIBITED.  
**DEM** Manufacturing, Deltron Emcon House  
 Hargreaves Way, Sawcliffe Ind. Park,  
 Scunthorpe, North Lincolnshire, DN15 8RF, UK

FINISH  
PLAIN/POWDER COAT/NYLON

DEBURR AND BREAK  
SHARP EDGES

DRAWN BY  
APPROVED BY

AY  
DT

TITLE  
STANDARD DUTY ENCLOSURE  
BOX & LID ASSEMBLY

IF IN DOUBT ASK  
DO NOT SCALE DRAWING

THIRD ANGLE PROJECTION

SHEET 1 OF 2  
SCALE 1:3  
A4

DRAWING NO.  
G ENCLOSURE

ISSUE  
**002**  
Release

MATERIAL  
ALUMINIUM ALLOY