

# Heavy Duty Low Cost Enclosures

## Technical Specification

Deltron's entry level Heavy Duty Low Cost enclosure is ideal for robust applications where moisture or dust ingress protection is not critical to the performance of the electronics housed inside.

In line with our IP rated Heavy Duty enclosures these are supplied with DIN rail stand-offs, base plate mounting kits and internal earth points.

We also offer a complete enclosure customisation service including machining, painting, printing, assembly and more. Visit our services page on our website for further details.



**Call us on:**

**+44 (0)1724 273200**

### Features:

- Supplied complete with lid, captive screws and earth screws
- PCB card guides and stand-offs
- DIN rail mounting points

### Typical Applications:

- Industrial Controls
- Security
- Transportation

### Standard Sizes Available:

125 x 125 x 80	220 x 120 x 80
125 x 125 x 90	220 x 120 x 90
130 x 80 x 60	260 x 160 x 90
160 x 160 x 90	260 x 160 x 120

### Standard Finishes Available:

Plain  
Powder Coated  
Nylon Coated

**See page 2 for dimensions**

### DEM Manufacturing

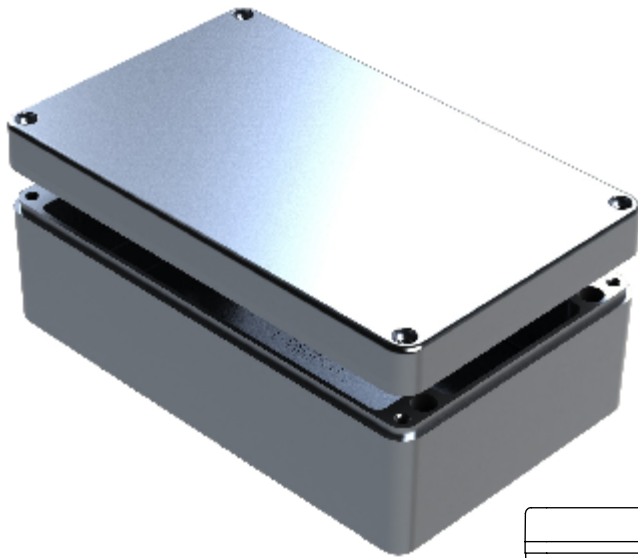
Deltron Emcon House  
Hargreaves Way, Sawcliffe Industrial Park  
Scunthorpe, North Lincolnshire  
DN15 8RF



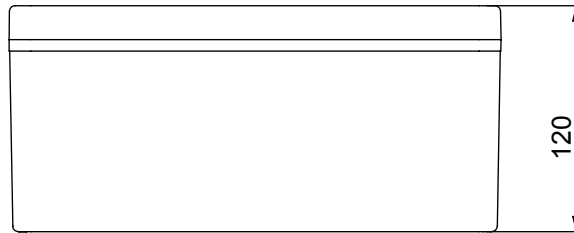
Tel: 44 (0) 1724 273200

Email: [sales@dem-uk.com](mailto:sales@dem-uk.com)

Web: [www.dem-uk.com/deltron-enclosures](http://www.dem-uk.com/deltron-enclosures)

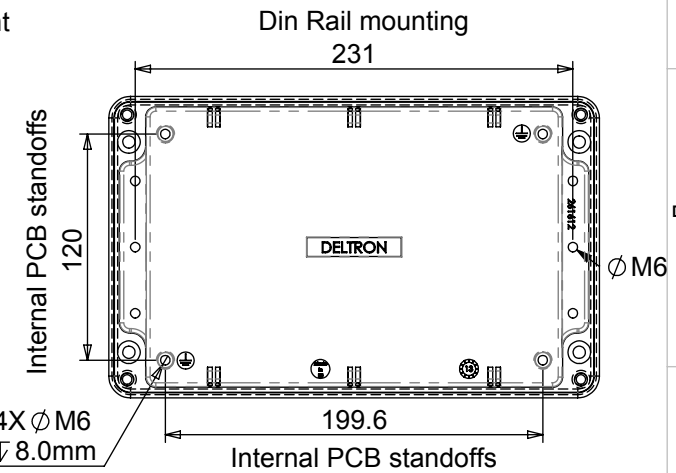
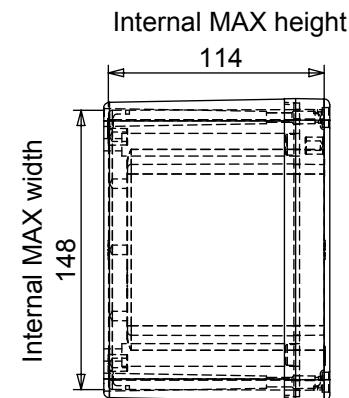
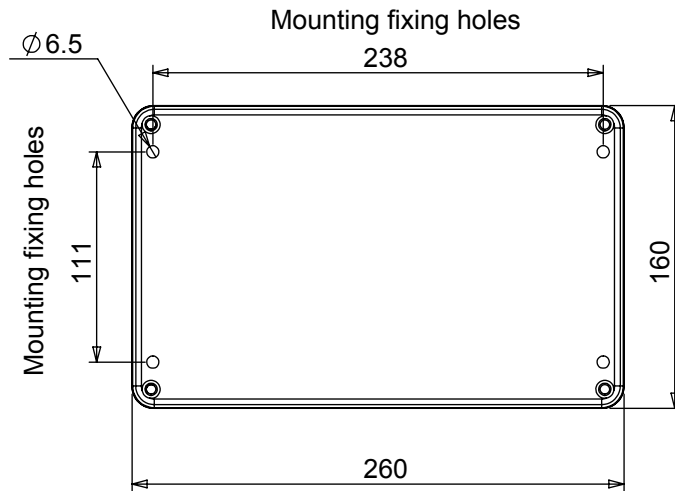
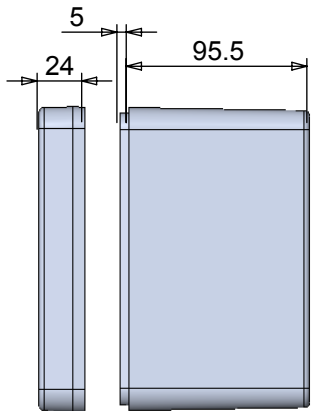


Length	Width	Height	Un-Painted	Powder Coat	Nylon Coat
260	160	120	486-261612	487-261612*	488-261612*
Box Dimensions in mm			Colour Option - Colour suffix * - Grey= A / Blue= B / Black= E		



Die cast aluminium enclosure sealed to

- Min enclosure wall thickness 3mm
- Min enclosure lid thickness 3mm
- PCB maximum dimensions 148mm Length, 1.7mm Width
- Enclosures can be supplied machined to your specifications



Tel No. +44(0)1724 273200 Website [www.dem-uk.com](http://www.dem-uk.com)



PROPRIETARY AND CONFIDENTIAL  
THE INFORMATION CONTAINED IN THIS DRAWING IS THE SOLE PROPERTY OF  
ALPHA 3 MANUFACTURING.  
ANY REPRODUCTION IN PART OR AS A WHOLE WITHOUT THE WRITTEN PERMISSION OF  
ALPHA 3 MANUFACTURING IS PROHIBITED.

DEM Manufacturing, Deltron Emcon House  
Hargreaves Way, Sawcliffe Ind. Park,  
Scunthorpe, North Lincolnshire, DN15 8RF, UK

UNLESS OTHERWISE SPECIFIED:  
DIMENSIONS ARE IN MILLIMETRES.  
TOLERANCE:  
**NO DECIMAL PLACES ±0.2mm**  
**1 DECIMAL PLACE ±0.1mm**  
**2 DECIMAL PLACES ±0.05mm**  
**ANGULAR TOLERANCE: ±1°**

FINISH - See paint code for colour  
IF IN DOUBT ASK  
DO NOT SCALE DRAWING  
MATERIAL LM24 / LM2

DEBURR AND BREAK  
SHARP EDGES

DRAWN BY  
APPROVED BY  
THIRD ANGLE PROJECTION

SPB  
WC  
SHEET 1 OF 1  
SCALE 1:4  
A4

TITLE  
**HEAVY DUTY  
DIE-CAST ENCLOSURE**  
DRAWING NO.  
486-261612  
ISSUE  
**02**  
Release