

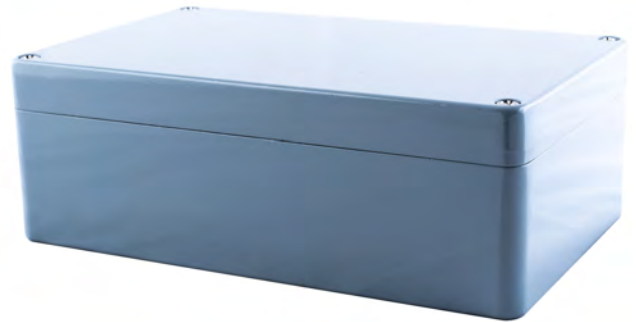
Heavy Duty Low Cost Enclosures

Technical Specification

Deltron's entry level Heavy Duty Low Cost enclosure is ideal for robust applications where moisture or dust ingress protection is not critical to the performance of the electronics housed inside.

In line with our IP rated Heavy Duty enclosures these are supplied with DIN rail stand-offs, base plate mounting kits and internal earth points.

We also offer a complete enclosure customisation service including machining, painting, printing, assembly and more. Visit our services page on our website for further details.



Call us on:

+44 (0)1724 273200

Features:

- Supplied complete with lid, captive screws and earth screws
- PCB card guides and stand-offs
- DIN rail mounting points

Typical Applications:

- Industrial Controls
- Security
- Transportation

Standard Sizes Available:

| | |
|----------------|-----------------|
| 125 x 125 x 80 | 220 x 120 x 80 |
| 125 x 125 x 90 | 220 x 120 x 90 |
| 130 x 80 x 60 | 260 x 160 x 90 |
| 160 x 160 x 90 | 260 x 160 x 120 |

Standard Finishes Available:

Plain
Powder Coated
Nylon Coated

See page 2 for dimensions

DEM Manufacturing

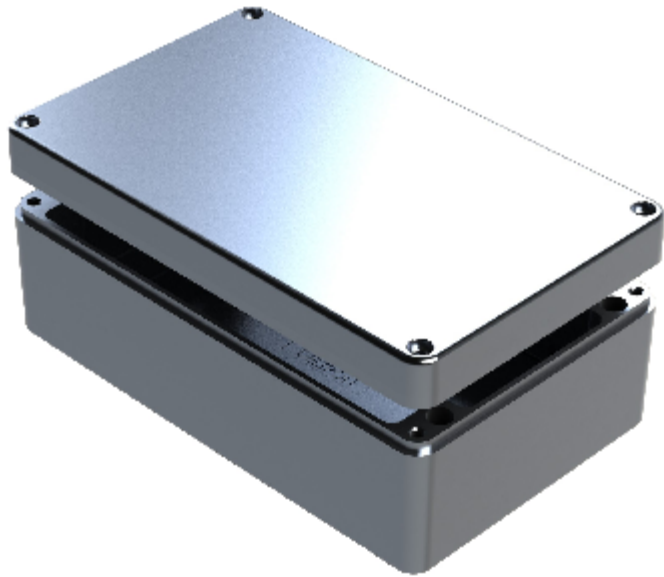
Deltron Emcon House
Hargreaves Way, Sawcliffe Industrial Park
Scunthorpe, North Lincolnshire
DN15 8RF



Tel: 44 (0) 1724 273200

Email: sales@dem-uk.com

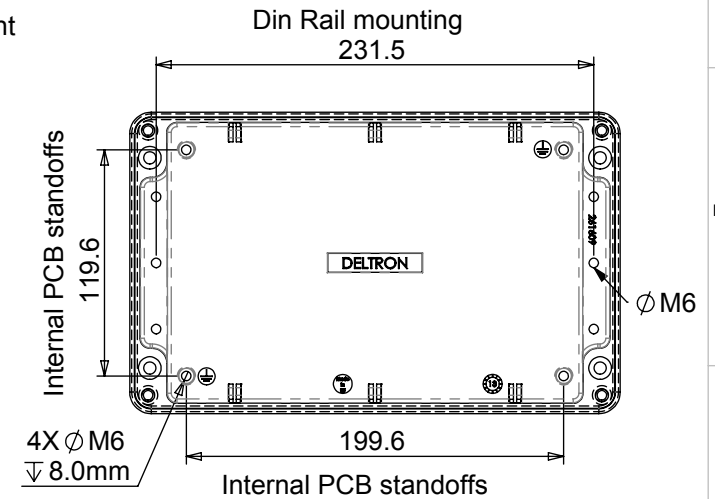
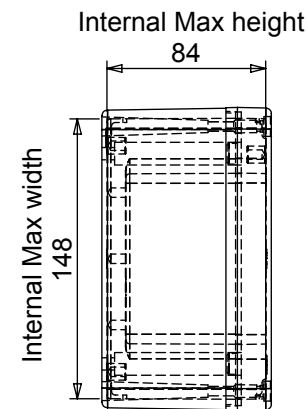
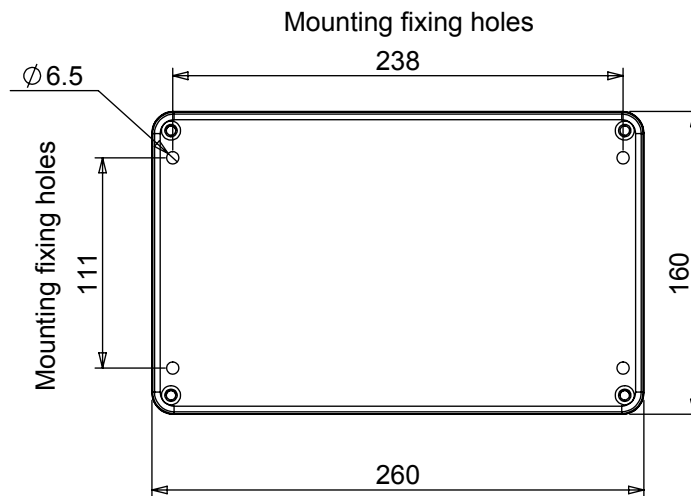
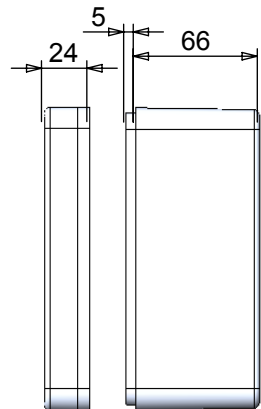
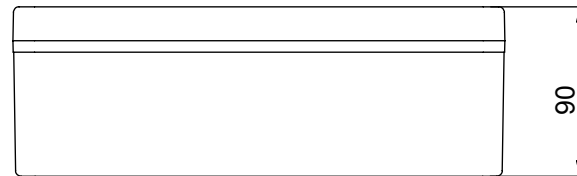
Web: www.dem-uk.com/deltron-enclosures



| Length | Width | Height | Un-Painted | Powder Coat | Nylon Coat |
|----------------------|-------|--------|--|-------------|-------------|
| 260 | 160 | 90 | 486-261609 | 487-261609* | 488-261609* |
| Box Dimensions in mm | | | Colour Option - Colour suffix * - Grey= A / Blue= B / Black= E | | |

Die cast aluminium enclosure sealed to

- Min enclosure wall thickness 3mm
- Min enclosure lid thickness 3mm
- PCB maximum dimensions 148mm Length, 1.7mm Width
- Enclosures can be supplied machined to your specifications



Tel No. +44(0)1724 273200 Website www.dem-uk.com



PROPRIETARY AND CONFIDENTIAL
THE INFORMATION CONTAINED IN THIS DRAWING IS THE SOLE PROPERTY OF
ALPHA 3 MANUFACTURING.
ANY REPRODUCTION IN PART OR AS A WHOLE WITHOUT THE WRITTEN PERMISSION OF
ALPHA 3 MANUFACTURING IS PROHIBITED.

DEM Manufacturing, Deltron Emcon House
Hargreaves Way, Sawcliffe Ind. Park,
Scunthorpe, North Lincolnshire, DN15 8RF, UK

UNLESS OTHERWISE SPECIFIED:
DIMENSIONS ARE IN MILLIMETRES.
TOLERANCE:
NO DECIMAL PLACES ±0.2mm
1 DECIMAL PLACE ±0.1mm
2 DECIMAL PLACES ±0.05mm
ANGULAR TOLERANCE: ±1°

FINISH - See paint code for colour
IF IN DOUBT ASK
DO NOT SCALE DRAWING
MATERIAL LM24 / LM2

DEBURR AND BREAK
SHARP EDGES

DRAWN BY SPB
APPROVED BY WC
THIRD ANGLE PROJECTION
SHEET 1 OF 1
SCALE 1:4
A4

TITLE **HEAVY DUTY
DIE-CAST ENCLOSURE**
DRAWING NO. 486-261609
ISSUE **02**
Release