

MEET OUR ROOMS

THE
DRAKE
HOTEL





CRASH PAD

Our intimate Crash Pads are an unapologetic escape for couples, business folk and visitors flying solo. With high ceilings and glass-paneled shower walls at the foot of your Queen bed, alongside unique artwork, this immaculate and contemporary room fits all the essentials of the Drake experience into 150 - 185 sq. ft. Exposed brick or art-deco wallpaper adorn each room with windows that actually open to bring the outside in. Expect quick access to our restaurants, Lounge, Sky Yard and Drake Underground music venue and rest assured you'll be right where the action is.

THE CLASSIC WING

The Classic Wing of The Drake Hotel is where our brand got its start. First launched in 2004, it has undergone multiple updates over the years. With art-filled guestrooms in our historic building creating a timeless, contemporary feel, and direct connections to all our spaces, it has everything you need for a sleepover in the heart of Toronto's West Queen West neighbourhood.

**QUEEN BED/150-185 SQ. FT.
(13 ROOMS)**





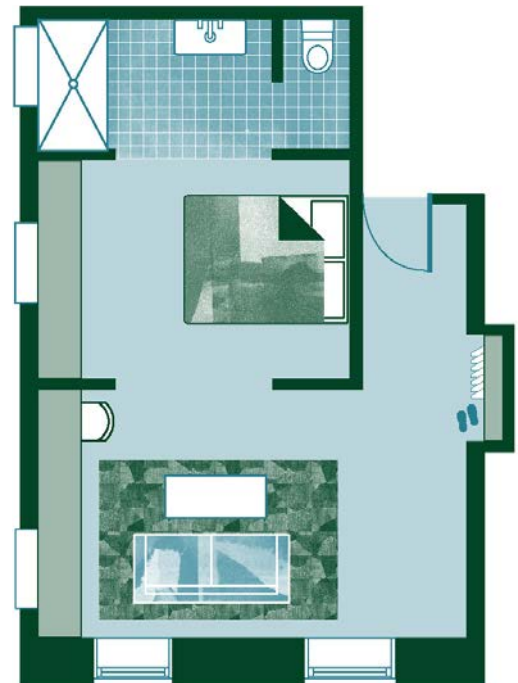
CLASSIC SUITE

This 385 sq. ft. suite is outfitted with mid century inspired furniture, a bar, Queen bed and corner views of Queen Street. It doubles as a cozy living space away from home in the building where it all began. The 'L' shaped layout means you get twice the number of windows that actually open to bring the outside in, with space to lounge and entertain. With quick access to our restaurants, Lounge, Sky Yard and Drake Underground music venue rest assured you'll be right where the action is.

THE CLASSIC WING

The Classic Wing of The Drake Hotel is where our brand got its start. First launched in 2004, it has undergone multiple updates over the years. With art-filled guestrooms in our historic building creating a timeless, contemporary feel, and direct connections to all our spaces, it has everything you need for a sleepover in the heart of Toronto's West Queen West neighbourhood.

QUEEN BED/385 SQ. FT. (1 ROOM)





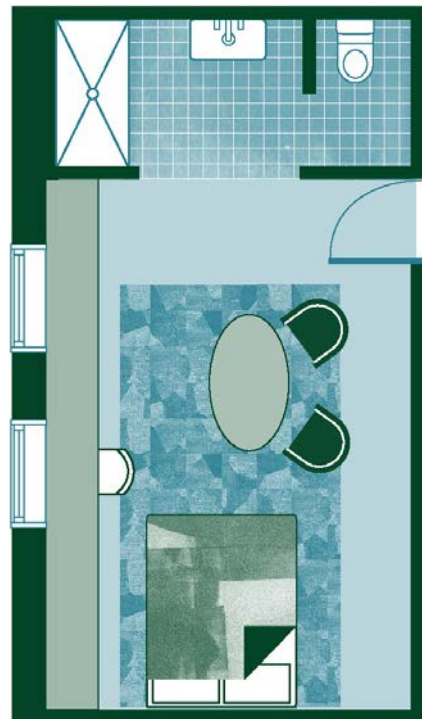
SALON

These 200 – 215 sq. ft rooms feature custom millwork, a Queen bed, curated art, glass shower stall and more. With art-deco wallpaper adorning each room with windows that actually open to bring the outside in, and quick access to our restaurants, Lounge, Sky Yard and Drake Underground music venue, rest assured you'll be right where the action is.

THE CLASSIC WING

The Classic Wing of The Drake Hotel is where our brand got its start. First launched in 2004, it has undergone multiple updates over the years. With art-filled guestrooms in our historic building creating a timeless, contemporary feel, and direct connections to all our spaces, it has everything you need for a sleepover in the heart of Toronto's West Queen West neighbourhood.

QUEEN BED/200-215 SQ. FT. (4 ROOMS)





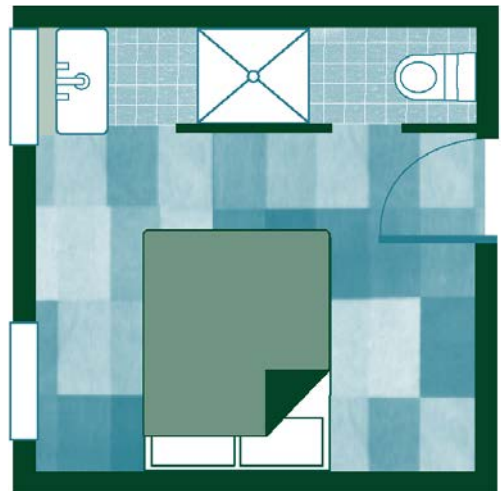
NOOK

With a private view of one of our permanent art installations just outside the window, this room is an adorable 105 sq. ft. stop-over for the traveler who just wants or merely requires the essentials. If you are a light sleeper you'll want to have earplugs handy: this room might be cozy, but its located steps away from our always buzzing roof top Sky Yard, so its attitude and access speak volumes.

THE CLASSIC WING

The Classic Wing of The Drake Hotel is where our brand got its start. First launched in 2004, it has undergone multiple updates over the years. With art-filled guestrooms in our historic building creating a timeless, contemporary feel, and direct connections to all our spaces, it has everything you need for a sleepover in the heart of Toronto's West Queen West neighbourhood.

**DOUBLE BED/105 SQ. FT.
(1 ROOM)**





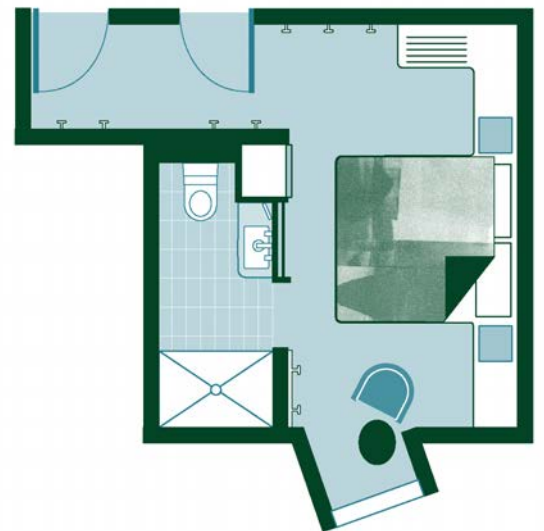
KING

Our King room is a private oasis with natural light cascading in from our seriously oversized windows. Signature Drake design details in every room include custom millwork and tufted velvet headboards, feature wallpapers and terrazzo shower tiles. The Drake King rooms are 165 -255 sq. ft. and feature a King bed, a fully stocked bar + snack cubby with mini-fridge, a customized working/dining nook, curated art from local Toronto artists and a bathroom you'll assuredly want to take home.

THE MODERN WING

The Modern Wing is our brand new, contemporary building and connects directly to all existing amenities + spaces of the Classic Wing. The well-appointed guest rooms are designed with an endlessly expanding art collection and a little something special, whether it's a peek into our stunning courtyard or floor to ceiling windows that look right onto our beloved stretch of Queen Street West.

**KING BED/165-225 SQ. FT.
(8 ROOMS)**





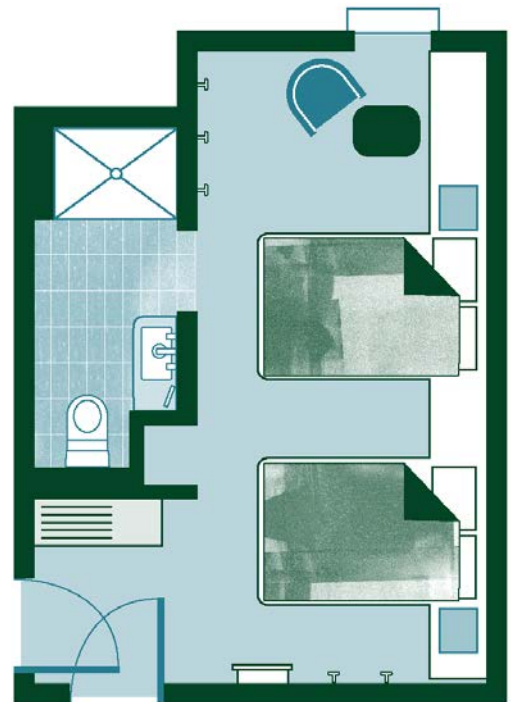
DOUBLE

The Drake Double rooms are 200 - 220 sq. ft. and feature a fully stocked bar + snack cubby with mini-fridge, a customized working/dining nook, curated art from local Toronto artists and a bathroom you'll assuredly want to take home. Signature Drake design details in every room include custom millwork and tufted velvet headboards, feature wallpapers and terrazzo shower tiles. With two Queen beds and accommodating up to four to sleepover, we don't blame you for having a pillow fight.

THE MODERN WING

The Modern Wing is our brand new, contemporary building and connects directly to all existing amenities + spaces of the Classic Wing. The well-appointed guest rooms are designed with an endlessly expanding art collection and a little something special, whether it's a peek into our stunning courtyard or floor to ceiling windows that look right onto our beloved stretch of Queen Street West.

**2 QUEEN BEDS/200-220 SQ. FT.
(6 ROOMS)**





QUEEN

Our Queen rooms are 135 – 195 sq. ft. and feature a fully stocked bar + snack cubby with mini-fridge, a customized working/dining nook, curated art from local Toronto artists and a bathroom you'll assuredly want to take home. Signature Drake design details in every room include custom millwork and tufted velvet headboards, feature wallpapers and terrazzo shower tiles. With Queen bed and courtyard- or street-facing views from highly stylized windows, our most-requested rooms will leave you yearning for one more night..

THE MODERN WING

The Modern Wing is our brand new, contemporary building and connects directly to all existing amenities + spaces of the Classic Wing. The well-appointed guest rooms are designed with an endlessly expanding art collection and a little something special, whether it's a peek into our stunning courtyard or floor to ceiling windows that look right onto our beloved stretch of Queen Street West.

QUEEN BED/135-195 SQ. FT. (15 ROOMS)





ROOFTOP SUITE

Our stunning Rooftop Suite was designed with a fresh eye for curated furniture pieces and thoughtful attention to detail. Signature Drake design means a blending of our favourite styles, and the space to make it all happen, including a private, fully decked out 540 sq ft. terrace overlooking the cityscape and two bedrooms with their own adjacent private baths. The spacious master bedroom features an adjoining walk-in-closet and art-deco, marble clad, master ensuite with soaker tub, glass-encased shower and double-vanity. 8-seat dining tables indoors and out, Memphis-styled living area and deco-meets-mid century kitchenette mean that although this room is ideal for entertaining, you might just want to keep it all to yourself.

THE MODERN WING

The Modern Wing is our brand new, contemporary building and connects directly to all existing amenities + spaces of the Classic Wing. The well-appointed guest rooms are designed with an endlessly expanding art collection and a little something special, whether it's a peek into our stunning courtyard or floor to ceiling windows that look right onto our beloved stretch of Queen Street West.

**KING + QUEEN BED/936 SQ. FT.
(1 ROOM)**



AMENITIES

- + 24-hour front desk with full concierge services
- + Central courtyard visible from every floor
- + Intimate lobby bar
- + Semi-private meeting space
- + Exclusive Malin+Goetz toiletries
- + In-room safe, laptop-sized
- + Unique snack + beverage selection
- + Room service available
- + Custom furniture + millwork
- + Free WiFi throughout premises
- + Pre-booked parking spaces
- + Curated packages + add-ons for curious culture seekers
- + Front of the line reservations to on-property restaurants + bars – The Sky Yard, Drake Lounge, Drake Café + Drake Underground
- + Green room for artists
- + Permanent art collection + rotating exhibits
- + Dedicated corporate and special event venues
- + Full party + event planning services
- + Curated playlists in public spaces

LOCATION

1150 Queen Street West, Toronto, Ontario M6J 1J3

thedrake.ca

PARKING

Guests of the hotel can pre-book parking spaces in advance of their stay (limited availability).

DINING

Menus made entirely from scratch that showcase local ingredients and respect for quality in every dish are served in three unique F+B locations: the café, lounge and award-winning rooftop patio, the Sky Yard. In-room dining is also available during business hours.

DRAKE UNDERGROUND

The Drake Hotel is also the home to the Drake Underground, one of the most celebrated and beloved small music venues in the city, where artists such as Beck, Billie Eilish, Leon Bridges, Peaches and M.I.A. all played their first shows in Toronto.

GOODCLEANFUN®

Each space is accessible via a private entrance with keyless check-in, allowing for social distancing measures and discrete entry. Each space will be upkept with The Drake's extensive **GOODCLEANFUN®** protocols and procedures, making it one of the safest options available in Toronto.