

metaphor

February 2026 | Issue Number 08

DESIGN-BUILD

Love, Care, and Everyday Beauty
Celebrating Love as a
Family Experience

IN Design Dilemma
Table Decor for Valentine's
Day Without Making It
Feel Themed

Feature Home Design
Organo Kandawada



MEENA MURUGAPPAN

Director

THE SOCIAL ARCH

Photography

Magazine Design

Design Team

SUHAIL ABUZAR

Interior Designer

ARJUN KARTHIK

Interior Designer

MYTHREYI.M

Interior Designer

JHANSI LAKSHMI VURA

Interior Designer

SYED WAHED

Site Engineer Delivery

Moinabad road,
beside Deccan granites,
Himayatnagar, Telangana 500075.

www.metaphorinteriors.co.in



TABLE OF CONTENTS

04 Trend Tracker

07 Table Decor for Valentine's Day - Without Making It Feel Themed

10 Feature Home Design
Organokandawada

16 Grow With Your Home
Celebrating Love as a
Family Experience.

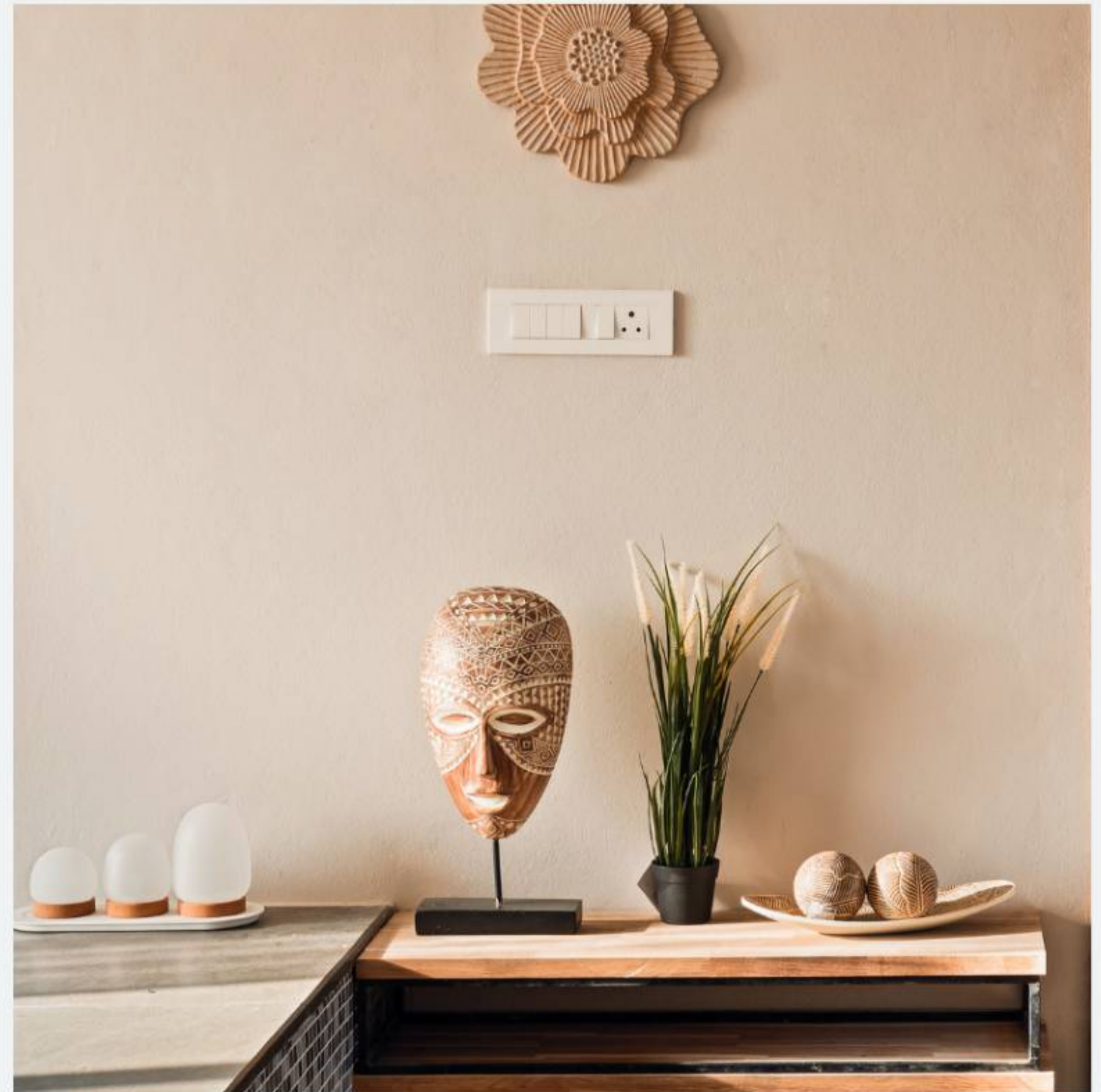
19 Style Guide:
Colours & Wood
Laminates for Classical
Homes

22 Metaphor
Recommends

WHAT'S TRENDING?

FEBRUARY DECOR: SOFT, INTIMATE, AND INTENTIONAL

The second month of the year is almost here, and now that most of you are sticking to your resolutions (hopefully), we invite a month that is away from the celebratory excess of January. The new year embarked on a fresh note that gave us time to celebrate with our loved ones. Now, as the second month is ready to take over, this is a reminder to slow down and pause. This is a month less about display and pomp, but about the quieter things that are yet to be addressed. The design shifts to a quieter and warmer form of living where intention exists. Think of February decor as a conversation rather than a performance. It's not trying to impress from across the room; it draws you in, closer, softer, and more personally.



FEBRUARY DECOR SHOULD FEEL LIKE A CONVERSATION NOT A PERFORMANCE.

One strong signal is the comeback of natural textiles, particularly cotton and linen table runners. They aren't attention-seeking accessories, but they age gracefully over time, each crease forming a new memory. A linen runner does not just add depth to the space but also makes it look graceful and elegant. It signals effort without formality, a balance many homes naturally grow into. As the meals turn more intimate since the guests have hugged you goodbye, these materials add to the personality of the space and acts like a grounded backdrop for connection.





WHAT'S RESONATING IN THOUGHTFUL HOMES :

Ceramic bowls might just turn out to be your new favourite, an impactful yet quieter star of the show. Often asymmetrical and not the definition of perfect, however, they bring a human quality to the space where factory-made exists. Whether used for fruit, keys, or nothing at all, they tell a story of craft and touch. In thoughtful homes, these pieces are less about utility and more about presence, which is a beautiful reminder that beauty doesn't need to shout to be heard.

Lighting is being reimagined to fill the space in no time. Brass candle holders are replacing the dramatic lights. Brass adds warmth, a sense of belonging, and calm. The goal isn't to go overboard with its intimacy. Candlelight flickers and softens edges, creating an atmosphere that feels calm and reassuring. It encourages conversations and lets them linger for longer.

Fresh flowers are also favoured over artificial arrangements. There's something deeply aligned with February in choosing blooms that are temporary, imperfect, and seasonal. Fresh flowers ask for care and attention, and they reward it with the subtle beauty they carry. They don't last forever because of obvious reasons, and this is what makes them feel honest and resonate with us more.

Another shift we're seeing is towards layered lighting, rather than relying on a single, uniform light source. Rather than committing to one kind, go with more. Table lamps, scones, and candles create depth and enhance the space. This approach allows rooms to change throughout the day and adapt to how they're being used. Morning light feels different from evening glow, and that flexibility makes spaces feel alive rather than staged.





Table Decor for Valentine's Day - Without Making It Feel Themed

February is also the month of love, but not what it usually seems like. Not the red and heart-shaped everything floating here and there in the most haphazard manner. This month relies on the atmosphere. The kind that feels considered, warm, and quietly romantic. Intimacy, after all, comes from restraint.

Metaphor's approach to a soulful Valentine's Day often begins with a neutral base rather than traditional reds. An off-white tablecloth creates a sense of calm immediately. It doesn't fight for attention, instead giving space to breathe and conversations to flow. Neutral bases are timeless and grounding, which allows texture and light to do the job.



Now, since the base work is done, jump to the accent colour. Blush, rust, and deep rose carry a sense of warmth. The key is to have accent elements instead of loud faces. This colour might appear in a napkin, a flower stem, or a ceramic glaze. When used sparingly, it feels intentional rather than thematic, romantic without being obvious.



Natural elements are crucial to keeping the table grounded and warm. Fresh flowers, real candles, and natural materials like wood or stone introduce an organic softness that instantly makes a setting feel human and more comfortable. However, make sure you are not rearranging. One thoughtfully chosen element is far more powerful than many elements that are waiting for your attention. A simple wooden board, a stone serving dish, or linen napkins with visible weave can quietly elevate the entire experience and make it quite unforgettable.

The Crockery should remain quite simple and decluttered. This isn't the moment for that fancy glassware. Clean lines, neutral tones, and pieces that feel familiar create familiarity. When the tableware fades slightly into the background, it allows the food, the conversation, and the connection to take the main stage effortlessly. The goal isn't to impress but rather to invite.

Flowers often become the emotional anchor of the table. Instead of multiple floral arrangements scattered across the table, opt for a single and clean arrangement. This keeps the table visually calm and ensures sightlines remain open, making the space look decluttered. A low arrangement works quite well, which allows conversation to flow uninterrupted while still pivoting around the table emotionally. Choose flowers with natural movement rather than stiff, structured floral arrangements.



And to the best part, lighting! Warm candlelight replaces and takes the centre stage. Candles help soften faces and slow time while shifting the mood effortlessly. Brass or simple ceramic holders add warmth without distraction. The flame itself is the feature.

And finally, the cherry on top is a handwritten note. Tucked onto a plate, it holds and sparks conversations like no other. It speaks louder than any ornament, and it says the table was set for someone and feels like a personal touch.

A table set for Valentine's Day doesn't need to announce the occasion. When it is styled with care, it feels like a cup of hot chocolate on a winter night, perfectly comforting and warm.



Feature Home

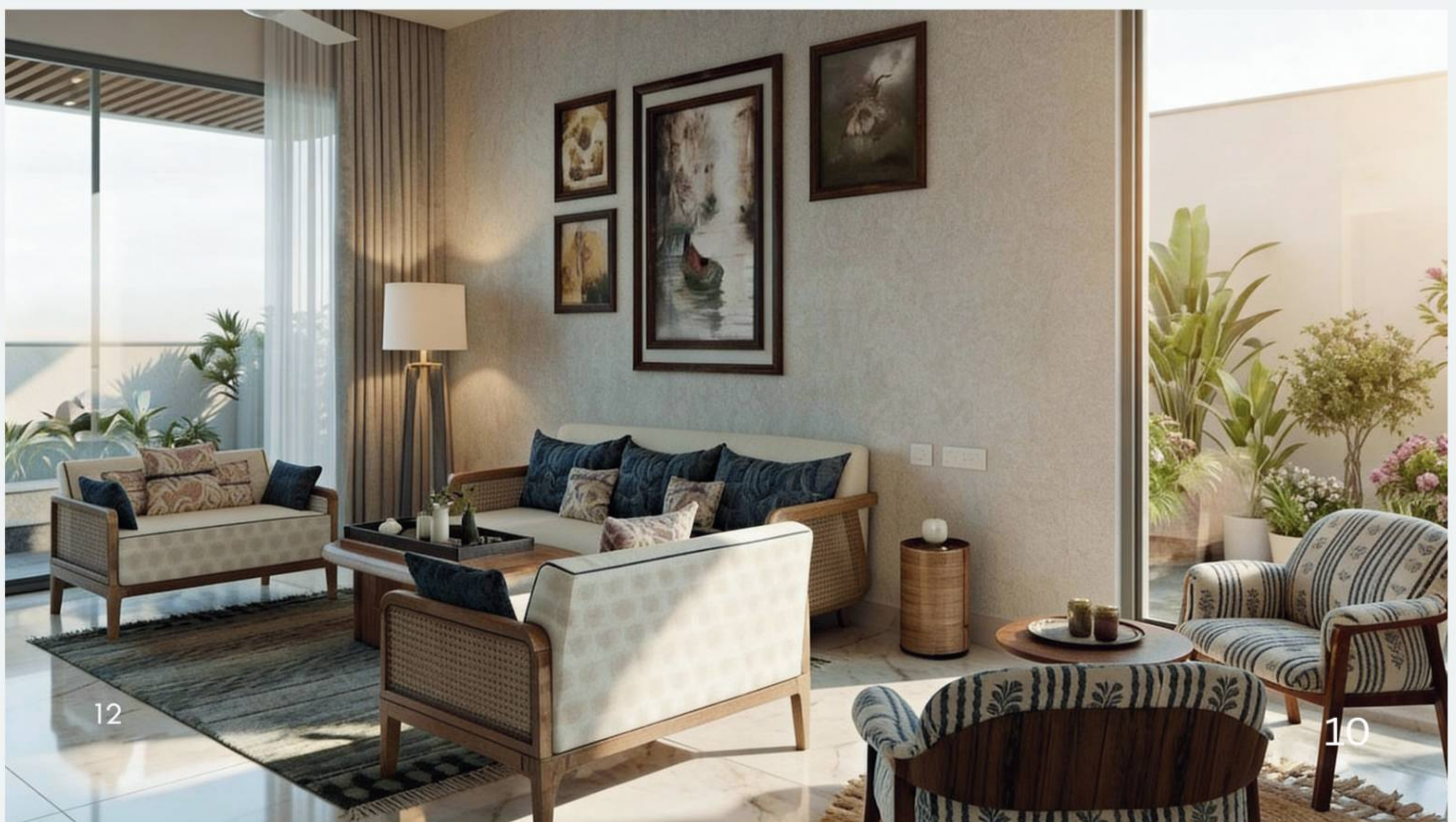
Organo Kandawada

Sunlit, Simple, and Proudly Indian

The Organo Kandawada home instantly sets a tone — light, calm, and thoughtfully composed. The space doesn't demand attention; it gently draws you in. Each corner feels considered, each surface encouraging a slower pace. Instead of relying on grand gestures, the interiors connect through feeling, creating an atmosphere that feels calm yet intentional. Modern contemporary detailing, softened with subtle Mediterranean cues and a careful play of warm and cool tones, shapes a home designed to ease the mind.

The narrative unfolds through the colour palette. Shades of blue, beige, and white define the interiors with a relaxed, natural flow. The blues are soft and restrained, echoing coastal mornings and handcrafted ceramics rather than bold statements. Introduced in measured accents, they refresh the space without overpowering it. White provides openness and visual calm, allowing materials and forms to breathe. Beige adds warmth and depth, bringing in an understated, sun-kissed quality that balances the cooler hues.

This interplay of temperatures is deliberate. Cool and warm tones coexist seamlessly, creating an environment that feels composed and balanced. Nothing feels abrupt or overstated; instead, the spaces transition effortlessly. The result is a serene visual continuity, where the home feels cohesive, soothing, and intuitively calm.



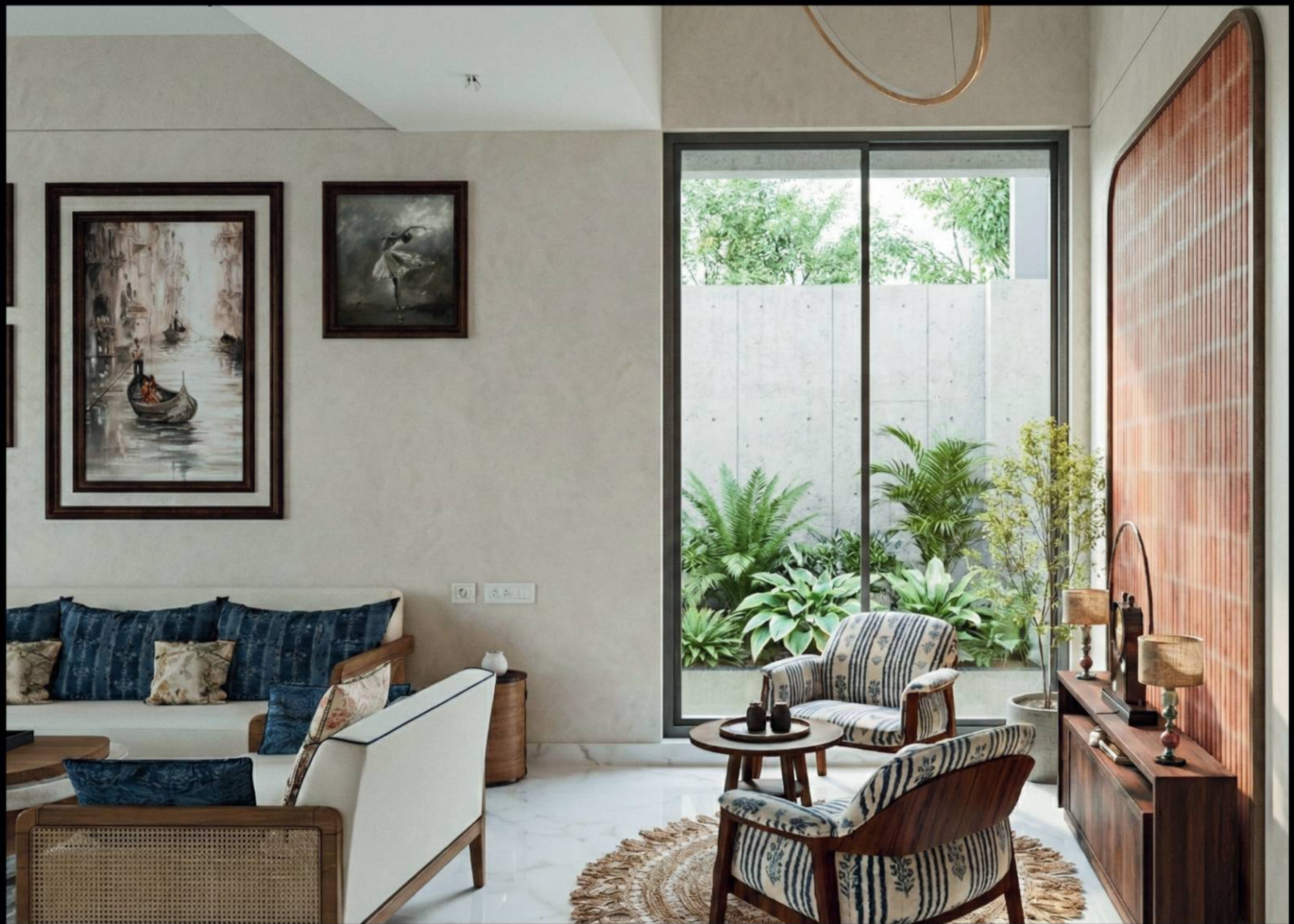


The design language is distinctly modern contemporary, built on clean lines, functional layouts, and a decluttered aesthetic. Surfaces are sleek but not cold. Furniture pieces follow simple geometries, with rounded edges and soft curves sneaking in as a nod to Mediterranean influences. This interplay between straight lines and gentle curves keeps the interiors both structured and soulful.









Textures quietly shape the sense of calm throughout the home. Matte surfaces take the lead, softening the way light interacts with the space instead of reflecting it sharply. The walls remain largely smooth, with select lime-wash-inspired finishes adding a gentle sense of motion, much like sun-worn Mediterranean interiors. Textiles are chosen for comfort and ease — linens, cottons, and plush upholstery in muted tones keep the spaces feeling relaxed and inviting. Light to medium-toned wood brings in a natural warmth, enhancing the palette without disrupting its balance.

Daylight becomes an active element in the interiors, shifting the mood as hours pass. Wide openings allow filtered light to spill in, keeping the rooms luminous yet soothing. Early light sharpens the softer blues, while the evening sun enriches the beiges, wrapping the home in a warm, golden softness. Artificial lighting is intentionally understated: hidden light strips, subtle wall washes, and warm-glow pendants that create ambience rather than visual drama.

The layout prioritises openness and seamless movement. The living space anchors the home, acting as the core where the design language comes together most clearly. Furniture placement supports easy circulation and natural interaction. Low-profile seating, layered rugs, restrained cushions, and thoughtfully chosen accents reinforce the calm mood. Nothing feels excessive — each element appears thoughtfully placed, contributing to a clutter-free, composed interior.

Grow With Your Home

Celebrating Love as a Family Experience..

Love inside a family home often looks different from what we see in films or advertisements. It isn't always candlelit or polished and picture perfect, and it certainly isn't restricted to one day on the calendar. For families, love is about presence rather than spectacle. It's quietly layered between the everyday rituals and being together as a whole. It is a safe space where you feel seen and heard and, most importantly, loved.

Family love isn't your usual generic, patterned love. It varies across ages and personalities. Each human being expresses and perceives love differently; hence, it may differ from one being to another. Some days it might be loud and clear, some days it's quietly expressed. That is why love doesn't require perfection, but rather a clean intention.

One beautiful ritual to celebrate togetherness is cooking a family meal together. As they say, cooking is a love language, and cooking together not only enhances the flavour of food but also strengthens the bond between them. When everyone, regardless of age share a common space, love takes over. The meal becomes a symbol that we made this together as a family. Over time, these dishes turn into an emotional journey that is tied to comfort and connection, a beautiful way to strengthen love.



Changing the physical setup of a meal can also make it feel special without being too extra. Setting a low dining table or creating floor seating slows everyone down and come together ultimately. Sitting closer, at the same level, softens hierarchy and encourages talks to flow longer. It reminds us that togetherness doesn't always need added layers.

Sharing stories is something that has been carried on for generations. Asking and sharing your favourite memories and moments helps see one another beyond the regular everyday rituals. Children learn through experiences. Parents get to model vulnerability and listening. These conversations quietly build emotional literacy. It is the art of sharing and growing together with love.

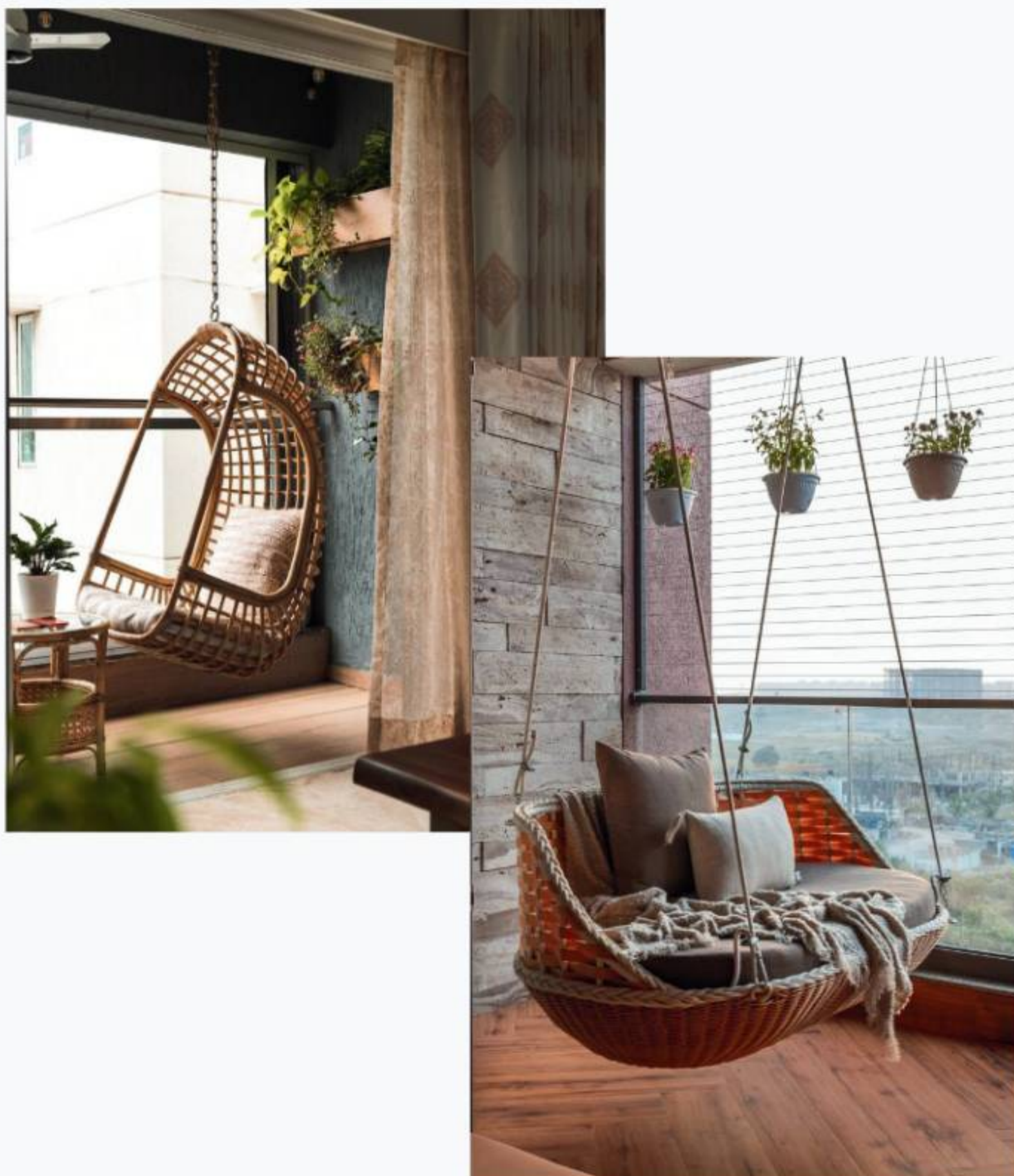
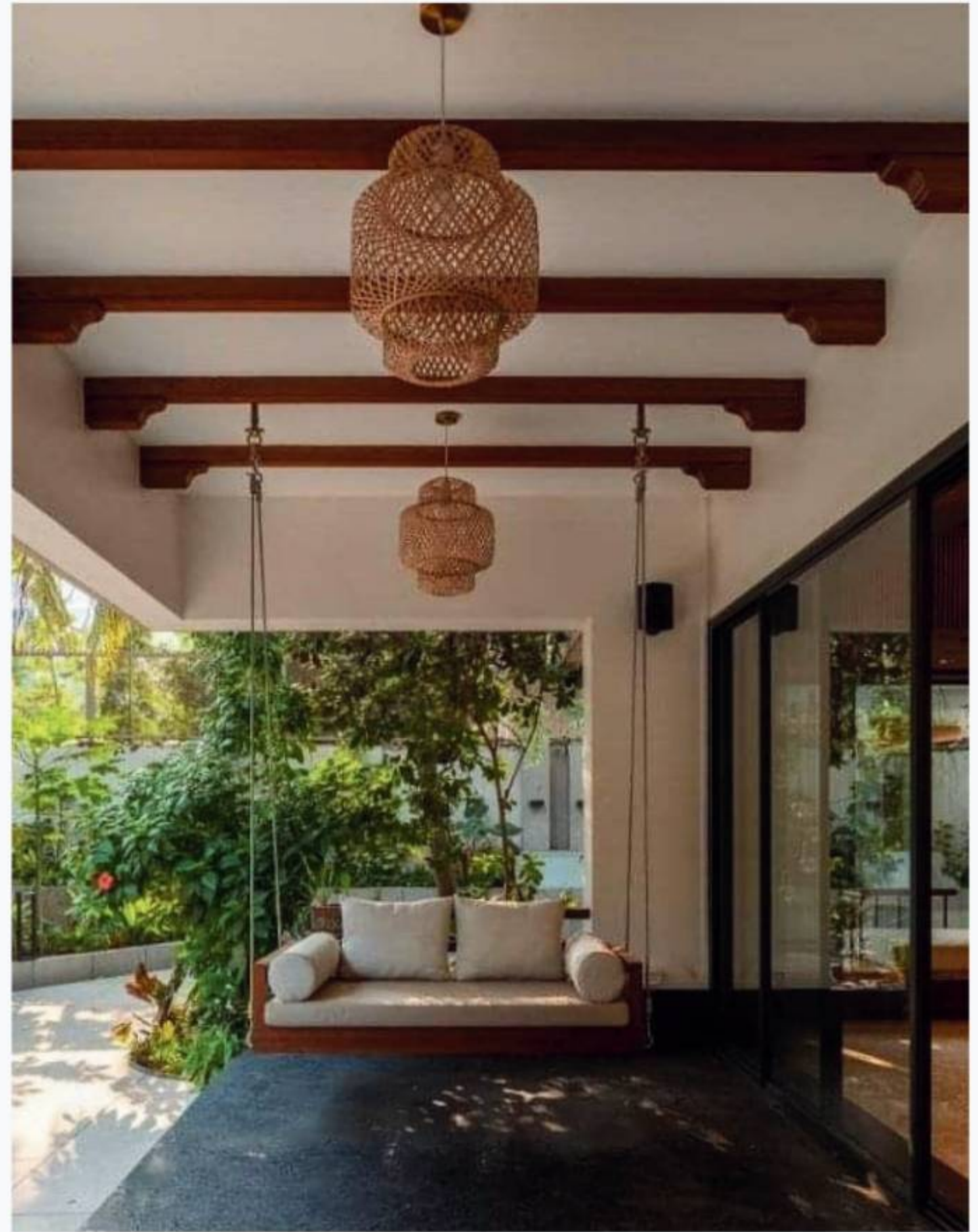
Ending the day on a solid note is something all of us love. A dessert outdoors is just the best way to end the night. It's often in these unstructured moments that children relax enough to open up, or simply feel content without needing entertainment. It becomes a safe space for everyone to come together and celebrate together.

Outdoor Swings : Types, Uses & Why Local Matters

A piece of nostalgia that would become your favourite new spot in your home is a swing. They are emotional pieces of furniture that became décor before it was even a thing. It became a space for people to pause and reflect. This becomes perfect for long conversations and when afternoons stretch to evenings. A swing is not an afterthought but rather a living element that connects architecture, climate, and human pace.

As much outdoor furniture is mass-produced today, a thoughtfully crafted swing can become a meaningful focal point. The material and placement all shape how a space is experienced in itself, this may be a veranda, an inner courtyard, or even a covered deck.

Certain swings blend seamlessly with your eco home. For instance, wooden swings are perfect for open verandas and semi-outdoor spaces. Hardwoods like teak, neem, or responsibly sourced mango wood age gracefully and withstand temperature shifts. Their simplicity lets air flow well while the strong joinery promises longevity. This may be paired with natural rope or metal chains, which feel more grounded. All you would need is a book to read!



Cane brings lightness and brightness to a space. It is best suited for covered decks or shaded patios, and they offer comfort without heaviness. Cane's natural flexibility adapts well to the body, making it perfect for long hours of lounging while ensuring comfort. When crafted well and protected from direct rain, cane swings can last decades while adding warmth and texture to a space.

Fabric swings help tie the space together. These are made from cotton, jute, or handwoven textiles, which introduce softness and movement as well. These swings are quite easy to install and adaptable to the user's needs. Their gentle sway creates a calming and very meditative experience.

Now, to pick the right swing, try to go for local designers since it goes way beyond aesthetics; it helps promote local artisans. Local designers understand the environmental conditions better, making them a more durable and versatile option. This also makes it easy to understand the repair and maintenance of the swing. This extends the life of the swing and reduces any additional wastage.

Galentine's Day — Celebrating Friendship at Home

As the month of love is right around the corner, a quieter form of love takes the centre stage, that is friendship. It is our calm amid the chaos, our comfort zone, and lastly, where we feel most at home. Galentine's Day is a chance to reconnect and revive these bonds, and if not, strengthen them further. But this does not necessarily have to be the cliché picture-perfect setups or thematic settings, but with warmth, ease, and a true connection. Celebration isn't about overdoing it but about creating a space that is breathable and feels warm.

Hosting a galentine's gathering at home allows you to lie back in your comfort space while having ample time and conversation on hand. Unlike formal setups that require additional spending, with limited time and resources, a home setup cuts back on the unnecessary parts. It feels like an extension of everyday life and feels far more intentional.

An afternoon tea or evening snacks are the right way to start. The timing sets the tone as this feels less hurried and ideal to start without the pressure. Evenings slow down your pace, and this is where conversations lighten and deepen. Warm mugs help conversations linger for long without feeling too much.



Coming to our most favourite part, the food! Shared platters encourage communal eating and give space to more shared conversations. A mix of sweet and savoury, it may be prepared at home or also be store-bought. This helps create a more homely feeling. Friends don't come for perfection but to feel welcomed. Passing plates, refilling cups, and tasting together become part of the experience that is unforgettable.

Fresh flowers instantly soften a space and make it aesthetic. Whether loosely arranged in jars or scattered as they are, they bring life without demanding attention and quietly layer a space. Paired with candles and textured textiles like table runners, throws, and cushions, the home feels layered and lived-in rather than oddly set up for the occasion. The key decor tip is restraint. Avoid balloons or props that turn the gathering into a performance. Friendship thrives in spaces that feel open and not staged or set up.

Style Guide: Colours & Wood Laminates for Classical Homes

Timeless homes are often the ones that are considered classical. These structures are rooted in tradition yet rich in character since they primarily rely on balance, proportion, and a sense of warmth that feels elegant and welcoming. Unlike its counterpart, contemporary interiors that usually chase trends, classical interiors thrive on depth and graceful aging, something that indicates a versatile home. Choosing the right colour palette and wood laminates becomes the base step to achieve this appeal.

The foundation of a classical home lies in the basics of soft, layered neutrals. Shades such as ivory cream and warm beige create the perfect backdrop that allows the details and intricate elements to stand out quite well and take up the main stage. These hues bring a sense of heritage and understated luxury, especially when used in accent features and decorative elements. Soft gold works beautifully in detailing, for instance, frames, light fixtures, or subtle trims, while muted maroon introduces warmth without overpowering the space and making it feel heavy.

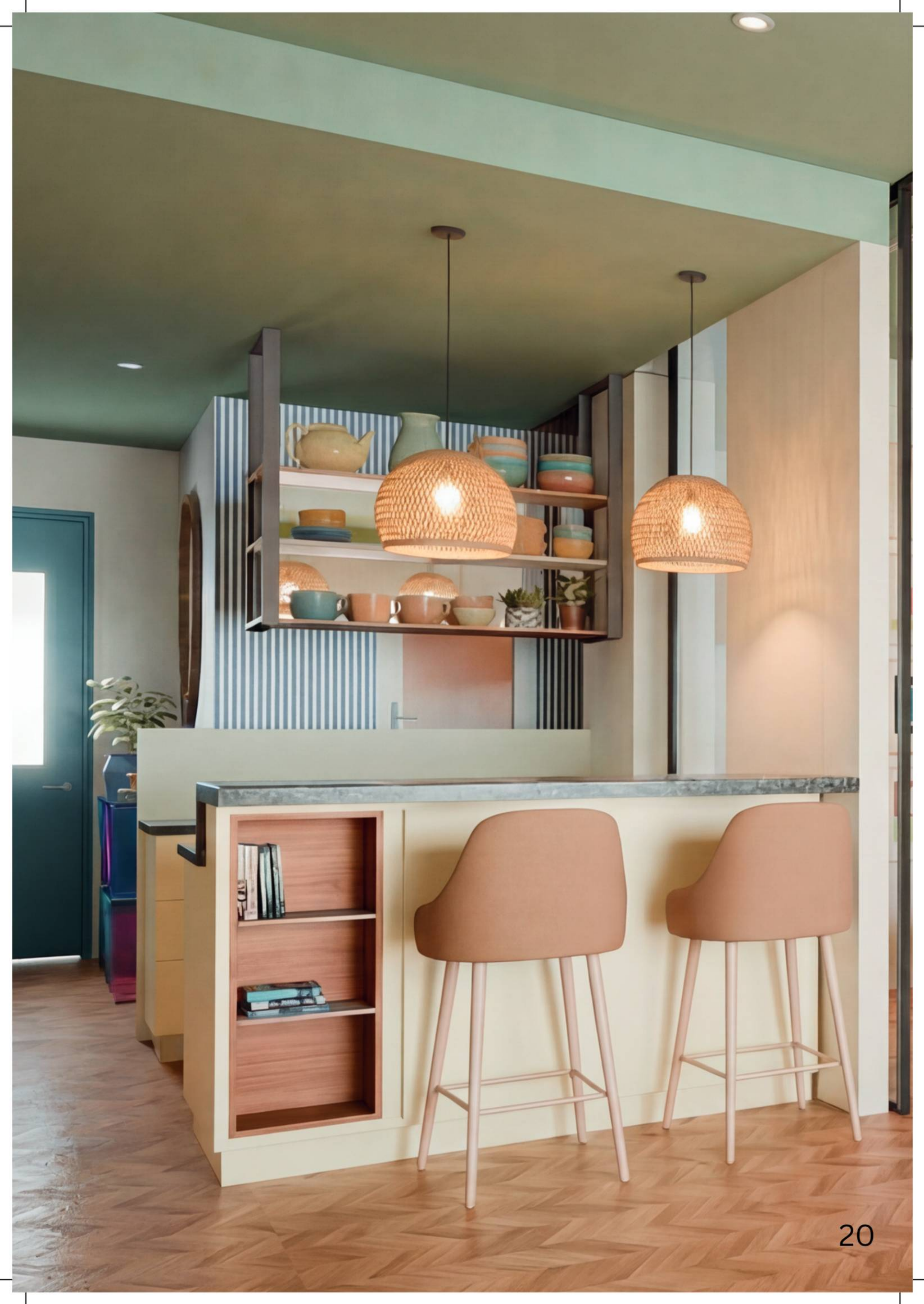
Accent colours are the perfect way to instantly draw attention without being too much. Sage green and temple red are well-suited for classical homes. Sage green offers a calm and organic colour palette that goes well with your natural material palette of the home, while temple red adds cultural depth and meaning to the home.



In many classical homes, stark whites or high-gloss finishes can feel overly modern if not carefully balanced. Bright white can feel a bit much and too modern, which is contradictory to the classical theme of the home. Similarly, high gloss surfaces reflect light aggressively, which tends to look slightly artificial over time. This removes the softness that classical-themed homes require.

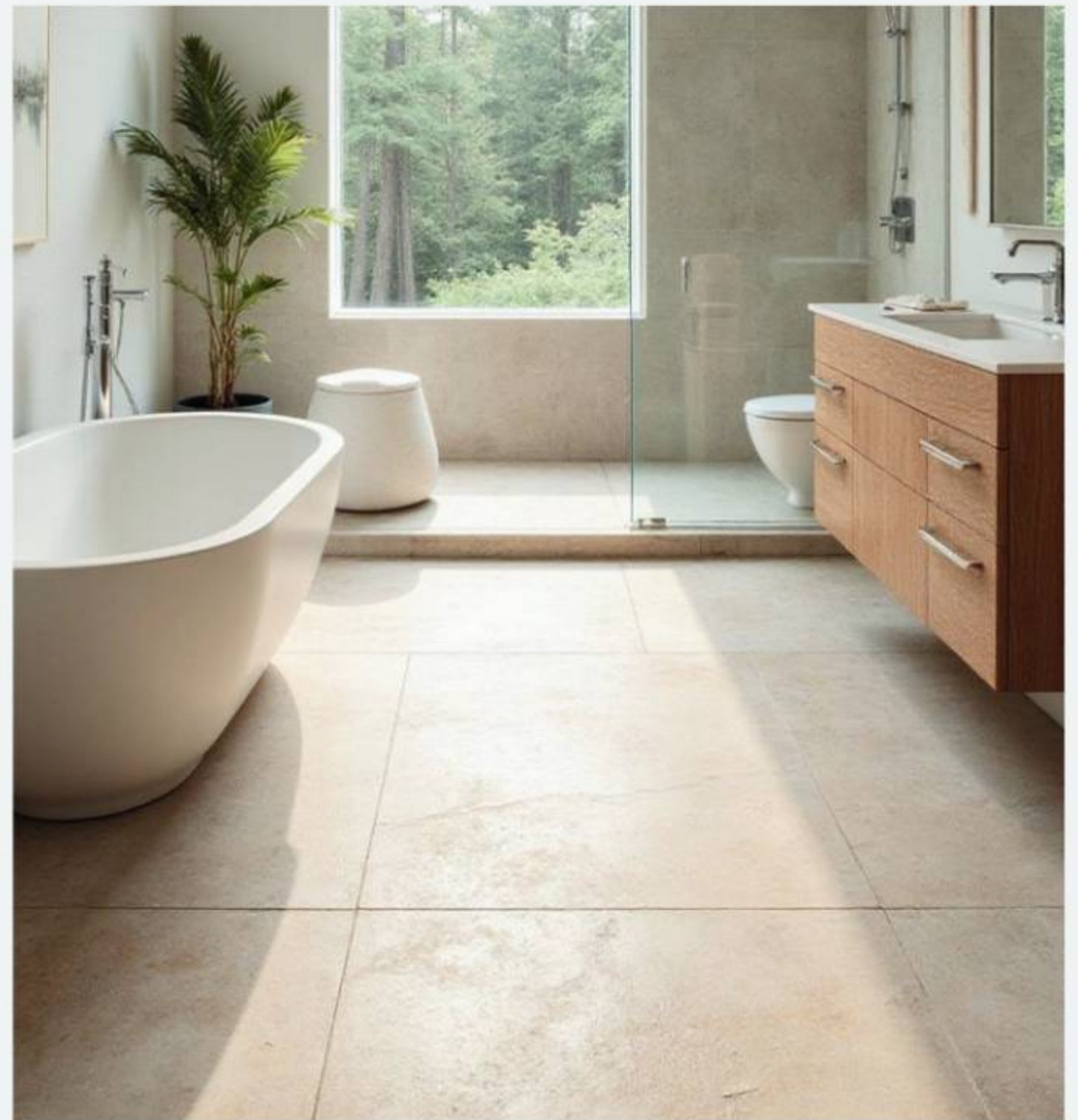
Wood is a material that has been around for a very long time and continues to play a crucial role in interiors. It plays a critical role in classical interiors. Teak and rosewood finishes are classic choices, known for their rich tones and versatile appeal. These finishes pair well with traditional furniture, carved details, and heritage-inspired layouts.

Walnut with warm undertones is another good option, especially for homeowners who want a slightly lighter yet still traditional look. Its subtle depth adds elegance without feeling heavy, which makes it the right choice for wardrobes, wall panelling, and cabinets. When it comes to the finish, Matte or satin laminates are often better suited. These finishes enhance the raw, natural beauty of wood without excessive shine, allowing the grain to take the main stage.



Behind the Scenes Maintaining Bathroom Vitrified Tiles - The Right Way

Bathroom vitrified tiles have been taking all the bathrooms by storm. They are a good reason as to why they are chosen. They are not only durable but also low-porosity and designed to handle moisture as well. But the longevity doesn't come with strength alone. Improper cleaning methods can end up reducing the lifespan of these tiles and compromising safety, which ends up dulling their appearance. Understanding how to care for vitrified tiles correctly keeps them functional, safe, and looking new for years.



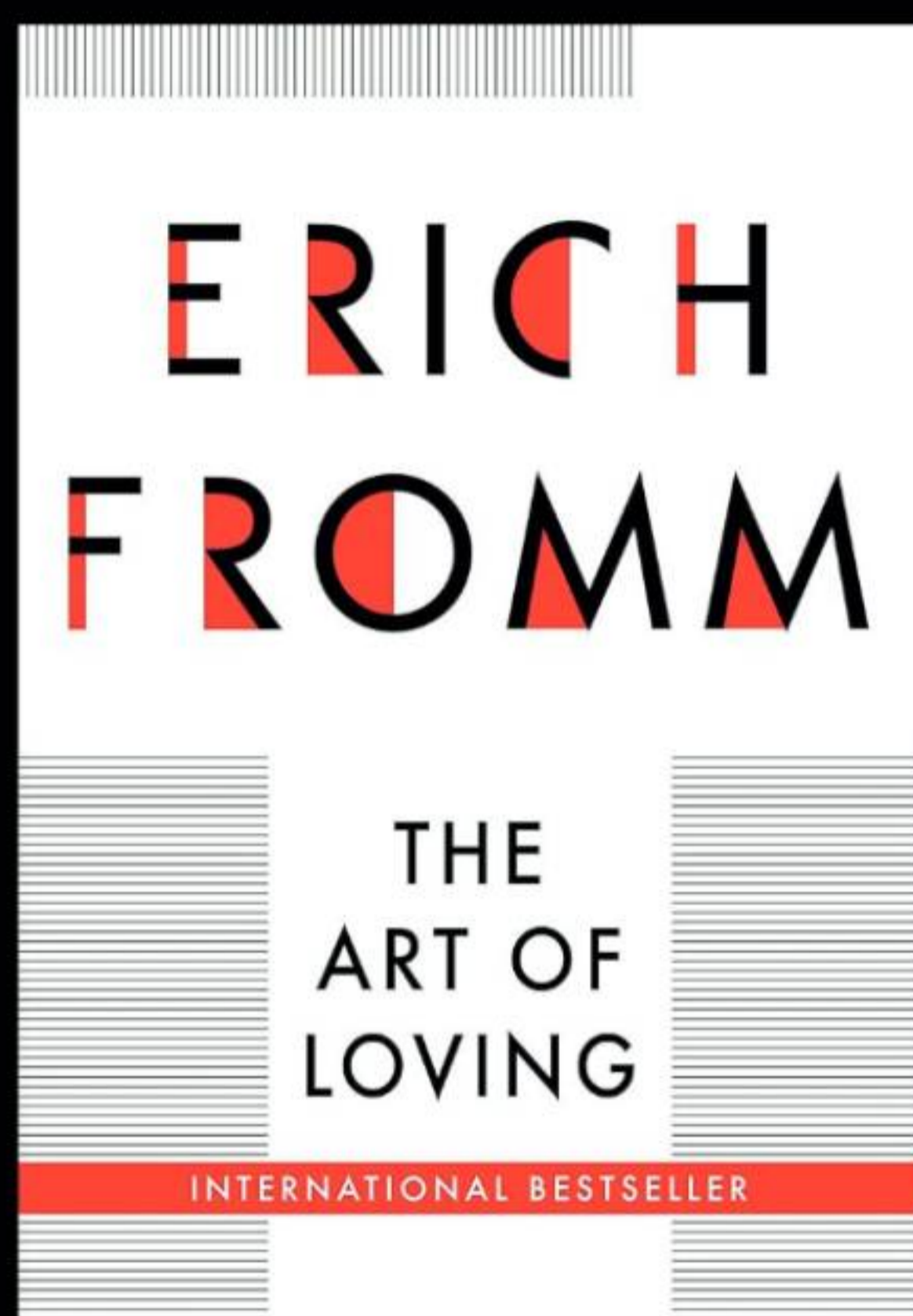
Cleaning is an important ritual that has to be incorporated into everyday life, like in most Indian homes. Daily cleaning may be quite simple and easy to do.

- Good tile care starts with the right toolkit: soft mop or microfiber cloth for daily cleaning.
- Use warm water with bio-enzyme cleaners to break down soap scum and body oils naturally.
- Regular drying matters—wipe tiles after cleaning to prevent dullness, water marks, and slippery films.
- Avoid acid-based cleaners; they erode tile surfaces and cause long-term dullness.
- Skip abrasive scrubs—they scratch tiles and make future cleaning harder.
- Prevent water pooling, as it seeps into joints and leads to staining.
- Harsh scrubbing damages this texture, reducing the tile's anti-slip performance.
- Bio-enzyme cleaners clean deeply without clogging pores or leaving slippery residue
- They're safer for skin, pets, groundwater, and improve indoor air quality.
- Smart, gentle maintenance protects your bathroom's beauty and safety long-term.

METAPHOR

Recommends

At Metaphor Interiors, we believe love is not a loud gesture. It layered quietly between attention, repetition, and care. It shows up in how spaces are maintained, how conversations unfold, and how people choose to live with each other. This month's recommendations explore love not as romance alone, but as a practice, and it is something shaped every day through thoughtfulness and intention.



01

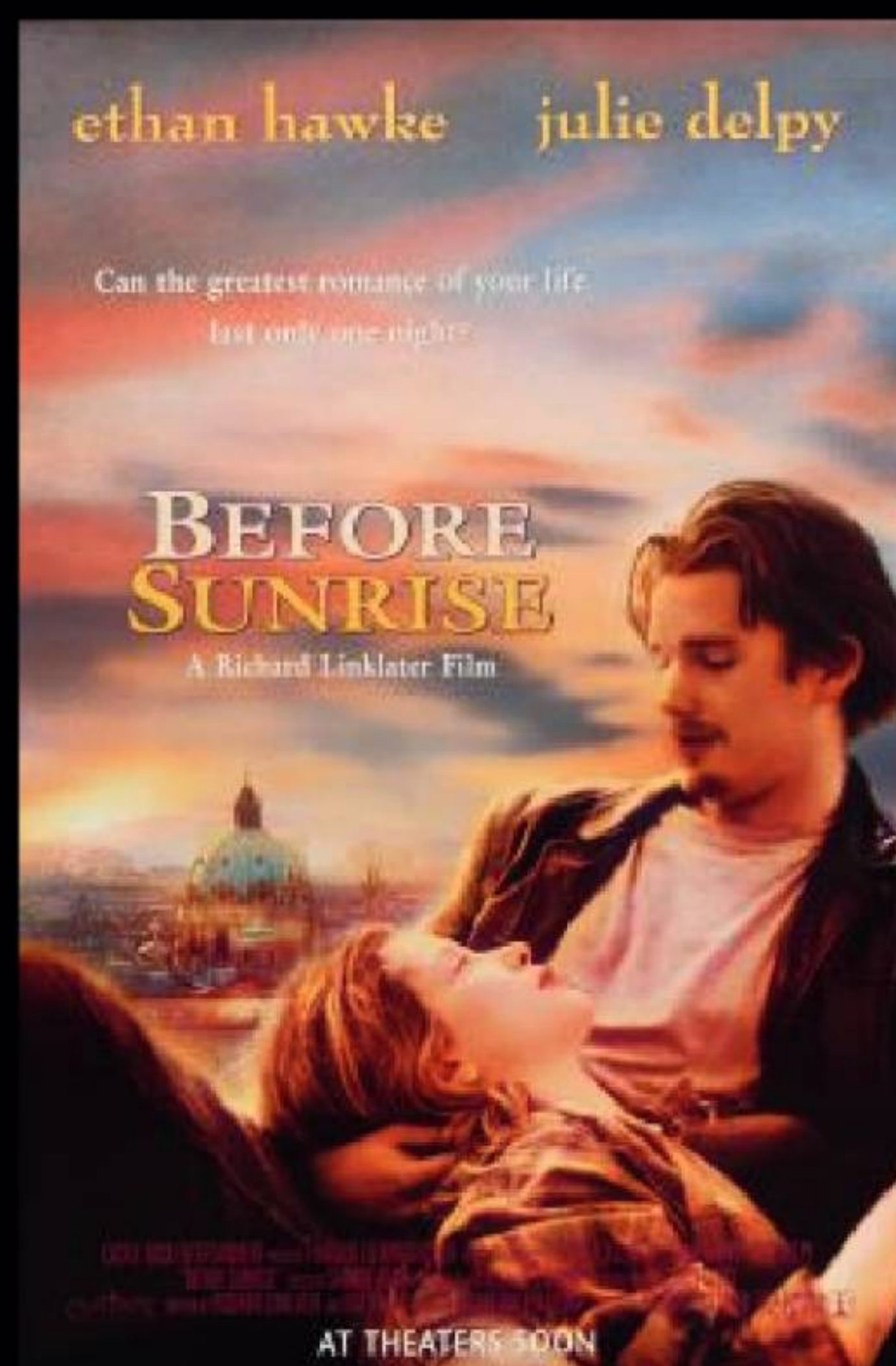
The Art of Loving by Erich Fromm

The Art of Loving by Erich Fromm is a classic work that reminds us that love is not something that happens to us; it is something we learn, cultivate, and imbibe. Fromm frames love as an active skill that requires discipline, patience, humility, and responsibility. Much like designing a home, loving well demands awareness and effort. You don't stumble into it but rather build on it. The book's ideas resonate deeply with how we think about spaces that are a well-loved home reflects care not through perfection, but through attention to detail, to use, and to the people who inhabit it.

02

Movie : Before Sunrise

Richard Linklater's Before Sunrise is a quiet study of connection. Two strangers walk through Vienna, talking about life, time, fears, and hopes. Not a lot of drama, but still a lot unfolds. The film celebrates conversation as intimacy, slowness as romance, and presence as the highest form of attention. It reminds us that meaningful spaces don't demand constant stimulation. Sometimes, all they need is room to sit, walk, talk, and listen. A bench by a window, a swing on a veranda, a chair pulled closer, these are the stages where everyday intimacy unfolds.



03

Podcasts : On Being

On Being, a beautiful podcast, explores what it means to live well, that is, with ourselves, with others, and within the world. Its conversations around love and belonging feel especially relevant today, when many of us are seeking grounding. The podcast speaks to the idea that belonging isn't about ownership or perfection; it's about care, welcome, and shared humanity. Much like a thoughtfully designed home, belonging is felt when spaces and conversations allow people to be fully themselves.

O
B E I N G



04

Ritual : Cleaning a shared space together

A ritual of cleaning together is something quietly powerful about cleaning a shared space together. It's practical, unglamorous, and deeply intimate. Folding, wiping, and arranging are acts that say, this matters, you matter, we are responsible for this life together. In design terms, maintenance is a form of love. A home that is cared for ages better, just as relationships do. These ritual transforms routine into connection, reminding us that care is shown through consistency, not spectacle.

"Care is the most enduring form of love" by Metaphor interiors sees care as the invisible architecture that holds home, relationships, and conversations together.

Subscribe to Metaphor

Follow our online edition

www.metaphorinteriors.co.in

Follow our



Instagram



Linkedin



Website