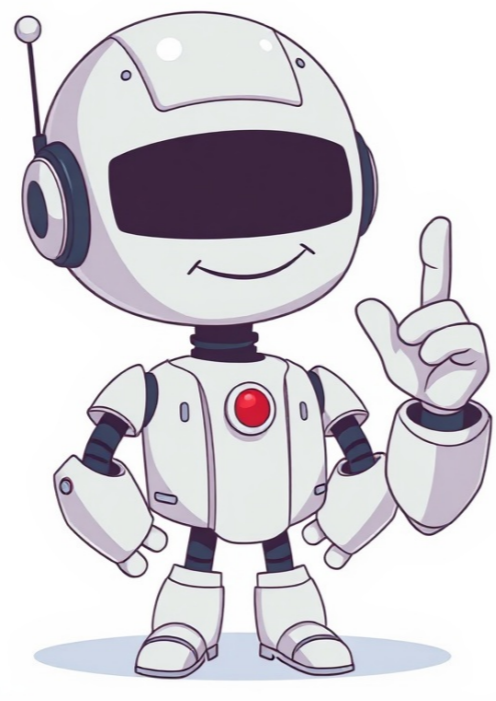


Click to verify



===== To find the ideal Gucci size for a comfortable and stylish fit, it's crucial to grasp their sizing standards. The luxury brand is renowned for its exceptional craftsmanship and precise tailoring; however, deciphering their size chart can be daunting. A user-friendly guide helps navigate the complexities of international sizes, including EU, US, and UK conversions. Yet, regional variations may lead to confusion when shopping online, especially considering Gucci's unisex and gender-specific sizing options. By studying the brand's comprehensive size chart for clothing, customers can make informed decisions that cater to their body type. The key lies in understanding how to interpret measurements effectively, as different styles often require specific sizing recommendations. When selecting Gucci tops, consider t-shirts, blouses, or other garments where measurements are pivotal. For bottoms, such as pants, skirts, and shorts, accurate understanding of the size chart allows for a comfortable fit that flatters individual body shapes. Moreover, considering rise and inseam length can significantly impact the overall appearance of the garment. By acknowledging these factors and utilizing Gucci's sizing charts, customers can enhance their shopping experience and make confident purchases.refine your choices and enhance the overall fit. Outerwear presents its own set of challenges when it comes to sizing. From coats to jackets, Gucci's size chart provides measurements that account for layering and mobility, ensuring optimal comfort and functionality, however, keep in mind that outerwear styles may vary in their intended fit, so it's advisable to consult the size chart alongside product descriptions for guidance. Interpreting Gucci's size chart requires attention to detail and an understanding of how measurements correspond to your body type. While challenges may arise in finding the perfect size, considering factors such as fabric stretch and silhouette can help mitigate potential issues, additionally, consulting customer reviews and seeking advice from Gucci's customer service team can provide valuable insights into sizing considerations, shopping Gucci online comes with its challenges, but a few tips can make the process seamless. First, always read product descriptions and size charts carefully. While this may take extra time, it ensures you're selecting the right size, reducing the risk of returns, however, even with attention to detail, sizing issues can arise. This is why it's crucial to check Gucci's return policy before making a purchase. A flexible return policy offers peace of mind, but it's important to weigh potential return shipping costs and time delays. Additionally, don't overlook customer reviews—they often provide real-world insights into how items fit, balancing these steps may feel overwhelming, but they can save you from disappointment and help you make the most of your investment in Gucci products. In conclusion, navigating Gucci's size chart for clothing involves balancing various factors to achieve the ideal fit. By understanding how to interpret the size chart effectively and considering the impact of different approaches, you can make informed decisions that align with your preferences and body type, so whether you're shopping for tops, bottoms, or outerwear, use the size chart as your guide to elevate your style with Gucci's impeccable designs. Gucci is renowned for its esteemed position as one of the oldest luxury fashion houses globally. The brand's distinctive style has long been coveted by fashion enthusiasts across generations. Gucci's extensive portfolio encompasses various categories, including premium leather goods such as handbags, shoes, and belts, often adorned with the iconic GG logo. Furthermore, the brand offers an array of ready-to-wear clothing, jewelry, timepieces, fragrances, and home decor items. When perusing a Gucci collection, shoppers can expect to indulge in a luxurious experience, be it searching for a new handbag or simply window shopping. Ensuring a precise fit is essential when purchasing Gucci shoes or attire; therefore, consulting the provided size charts is advisable. It is recommended to utilize the measurements and select the corresponding size, particularly if you fall between sizes; opting for the larger size guarantees a comfortable fit. For females, the sizing chart provides detailed measurements for various items, including tops, dresses, jeans, pants, and outerwear. A similar size chart caters to male shoppers, covering shirt sizes, T-shirt sizes, sweatshirt sizes, suit sizes, pant sizes, and jacket sizes. These charts serve as a valuable resource in determining accurate sizes, reducing the likelihood of purchasing items that do not fit well. To accurately measure one's chest size, wrapping a measuring tape around the torso, just beneath the armpits, is necessary. Keeping the tape level and snug, yet not too tight, ensures precise results. Taking multiple measurements can help refine the calculation. Similarly, to gauge waist size, wrapping a tape measure around the natural waistline provides an accurate reading. It is essential to stand up straight and exhale before taking the measurement to obtain reliable results. Measuring hip sizes involves encircling the widest part of the hips with a measuring tape. Comparing this measurement to a size chart enables shoppers to find suitable pants that fit comfortably. Lastly, accurately determining shoe sizes is crucial for ensuring a comfortable fit; tracing one's foot onto paper or using a ruler/tape measure while wearing the intended socks provides accurate results. =====Finding the perfect Gucci fit can elevate your luxury experience. To ensure you get the right size, use the provided charts and guides. Measure yourself to determine your Gucci size, whether it's for shoes, clothing, or accessories like belts, rings, hoodies, or sunglasses. For instance, to find your Gucci belt size, check your jeans size range or Italian Pants Size. Don't worry about sizing for Gucci socks; they're available in various sizes and colors to complement your style. When it comes to Gucci sneakers or shoes, use the women's size charts provided to find the perfect fit for your loved one. The same goes for Gucci tights - with our guide, you'll be able to shop without worrying about sizes. For Gucci sunglasses, consider both size and price when selecting a model. Lastly, don't forget to measure your wrist accurately to determine your Gucci bracelet size. It's also crucial to know the right bra size before purchasing a Gucci bra: wearing the wrong size can be uncomfortable and even painful. Use the provided charts and guides for each item to ensure you get the perfect fit every time. Gucci offers various sizes, including XXS to XXXL in some cases, as shown in their jackets and coats size chart. For tops and sweaters, they cater to different sizes from US to European measurements. Pants, shorts, and skirts also come in a range of sizes, from 36 to 48, depending on the type. By using these charts and guides, you'll be able to navigate Gucci's wide variety of products with confidence, ensuring that your purchases fit perfectly and enhance your overall luxury experience. A Comprehensive Guide to Measuring Yourself for Gucci: A Step-by-Step Approach ===== To ensure a perfect fit, it's essential to take your measurements accurately. Here's a detailed guide on how to measure yourself for Gucci clothing and shoes. First, familiarize yourself with the Gucci size chart for different categories like tops, pants, belts, hats, gloves, socks, tights, and shoes. The size charts provide measurements in both US inches and World centimeters. Clothing Size Chart Refer to the following size charts for men's and women's clothing: | Category | Men's | Women's | | --- | --- | --- | | Chest | 18 inch (46 cm) | 16 inch (40 cm) | | Bust | 20 inch (51 cm) | 18 inch (46 cm) | | Shoulder | 22 inch (56 cm) | 20 inch (51 cm) | | Waist | 24 inch (61 cm) | 22 inch (56 cm) | | Leg | 28 inch (71 cm) | 26 inch (66 cm) | | Shoe Size Chart The Gucci shoe size chart provides measurements in US inches and World centimeters: | Size | US (inch) | World (cm) | | --- | --- | --- | | 36-37 | 9.1 - 9.4 | 23 - 24 | | 38-39 | 9.5 - 9.8 | 24 - 25 | | 40-41 | 10 - 10.2 | 25 - 26 | | 42-43 | 10.6 - 10.8 | 27 - 28 | | 44-45 | 11 - 11.2 | 29 - 30 | | Belt Size Chart The Gucci belt size chart provides measurements in US inches and World centimeters: | Size (Low Rise) | Hip Measurement (US inch) | | --- | --- | | 0-1 | 24-26 inch (61 cm - 66 cm) | | 20-22 inch (51 cm - 56 cm) | | 2-3 | 26-28 inch (66 cm - 71 cm) | | 22-24 inch (56 cm - 61 cm) | | 4-5 | 28-30 inch (71 cm - 76 cm) | | 24-26 inch (61 cm - 66 cm) | | Hat Size Chart The Gucci hat size chart provides measurements in US inches and World centimeters: | Size | Head Circumference (US inch) | | --- | --- | | XS | 21.7 inch (55 cm) | | S | 22 inch (56 cm) | | M | 22.5/2.5 inch (57 cm - 58 cm) | | Gloves and Socks Size Chart The Gucci gloves size chart provides measurements in US inches: | Circumference Length | 6.5-7.4 inch (16 cm - 19 cm) | | 7.5-8.1 inch (19 cm - 20.5 cm) | | The Gucci socks size chart provides measurements in US shoe sizes for women and men: | US Shoe Size | Women's Size | | --- | --- | | 36-37 | S36-S37 | | 38-39 | M38-M39 | | 40-41 | L40-L41 | | 42-43 | XL42-43 | | Tights Size Chart The Gucci tights size chart provides measurements in US inches: | Height | Weight (lb) | Sizing (kg) | | --- | --- | --- | | 57 - 63 inch (145 cm - 160 cm) | 95 - 132 lb | 43 - 60 kg | | 61 - 67 inch (155 cm - 170 cm) | 131 - 154 lb | 59 - 65 kg | | To convert your Gucci shoe size, refer to the official website's length conversion note. The guide provides a step-by-step approach on how to take body measurements accurately using a tape measure or a standard credit card. Essential Tools for Accurate Measurements If you do a lot of online apparel shopping, having accurate body measurement is crucial. A good quality measuring tape set with clear markings in both inches and centimeters is essential. Alternative Method: Converting Men's and Women's Gucci Shoe Sizes Converting men's and women's Gucci shoe sizes can be challenging. However, by following the guide provided on the official website, you'll be able to navigate between the realms of converting men's and women's Gucci shoe sizes with ease. By referring to these size charts, you'll be well-equipped to find your perfect fit in Gucci clothing and shoes. ===== Gucci shoe size conversion is necessary for both men and women. The US/UK/France/Italy shoe sizing charts are provided above to help customers choose the right size. For example, a US women's size 7 corresponds to an IT size of 37. To convert Gucci shoes from men's sizes to women's sizes, add 1.5 to 2 units to the men's shoe size. The correct conversion is as follows: Men's US Sizing Women's US Sizing 35 3.55.5 46 4.56.5 57 5.57.5 68 6.58.5 79 7.59.5 810 8.510.5 911 9.511.5 1012 Gucci's men's line offers premium options, including tailored suits and comfortable shoes. The Men's Tops and Outerwear Size Chart and Men's Bottoms Size Chart can be used to select the perfect size. Men's Gucci tops and outerwear combine refined craftsmanship with luxurious materials and timeless design. The correct measurements for each size are listed on the Men's Tops and Outerwear Size Chart. Men's Gucci bottoms blend tailored precision, comfort-focused construction, and enduring style. The correct measurements for each size are listed on the Men's Bottoms Size Chart. The Men's Shoes Size Chart provides information on various types of shoes from loafers to sneakers in both US/UK/France/Italy sizing. Reference the provided charts and conversion guide to ensure a snug fit and select the perfect Gucci shoe size. The Gucci brand offers a wide range of stylish accessories, including belts, rings, and shoes, designed to complement any outfit. Men's belts come in various sizes, ranging from 7575 to 9595 cm, with corresponding length measurements for different jean styles. US UK IT EU JEANS GUCCI 7595 / 30"2626 7590 / 29.3"2618 7585 / 28.4"2609 7575 / 29.5"2626 7590 / 28.6"2617 Women's Clothing showcases Gucci's blend of contemporary fashion and classic elegance, offering tops and outerwear with precise measurements for a perfect fit. US UK IT EU SHOULDER (CM/IN) CHEST (CM/IN) 0023 / 14.6"77 / 30.3" 0044 / 15.0"80 / 31.5" 0048 / 15.4"83 / 32.7" 0051 / 15.7"86 / 33.8" 0058 / 16.1"89 / 35.0" Women's Bottoms provide refined tailoring and premium fabrics, with waist and hips measurements available for various styles. US UK IT EU WAIST (CM/IN) HIPS (CM/IN) 0023 / 23.2"85 / 33.5" 0046 / 24.4"88 / 34.6" 0051 / 25.6"91 / 35.8" 0069 / 26.8"94 / 37.0" Women's Shoes cater to comfort and style, with various length measurements for different styles. US UK IT EU LENGTH (CM/IN) 4134 / 8.3"4 4513 / 8.5"5 5221 / 8.7"5 Whether it's a belt, ring, or shoe, Gucci offers high-quality accessories that bring sophistication to any ensemble.V6363 2410 3/4V6464 2511W6565 2611 1/2X6666 2711 3/4X - Y6767 Scroll horizontallyKids' ClothingGucci's kids' collection marries comfort with a playful aesthetic. Use these charts to ensure children can enjoy their outfits and shoes with ease.Kid's Tops and Outerwear Size ChartKids' Gucci tops and outerwear combine playful aesthetics with high-quality craftsmanship, ensuring style, comfort, and durability for all their daily adventures. SIZE / AGE LENGTH (CM/IN) 0 - 3 Months54 / 21.3" 3 - 6 Months60 / 23.6" 6 - 9 Months67 / 26.4" 9 - 12 Months74 / 29.1" 12 - 18 Months80 / 31.5" 18 - 24 Months86 / 33.9" 24 Months92 / 36.2" 36 Months98 / 38.6" 4 Years104 / 40.9" 5 Years110 / 43.3" 6 Years116 / 45.7" 8 Years130 / 51.2" 10 Years140 / 55.1" 12 Years152 / 59.8" Scroll horizontallyKids' ShoesProperly fitting shoes help kids explore comfortably and confidently. US UK IT EU LENGTH (CM/IN) 10.5161610.0 / 3.9" 1.51171710.6 / 4.2" 2.52181811.2 / 4.4" 3.53191911.8 / 4.6" 4.5202012.0 / 4.7" 5.45212112.7 / 5.0" 6.5222213.3 / 5.2" 7.65232314.0 / 5.5" 8.75242414.7 / 5.8" 9.85252515.3 / 6.0" 10.95262616.0 / 6.3" 10.510272716.7 / 6.6" 1110.5282817.3 / 6.8" 1211.5292918.0 / 7.1" 12.512303018.7 / 7.4" 1312.5313119.3 / 7.6" 113323220.0 / 7.9" 21333320.7 / 8.2" Scroll horizontallyFrequently Asked QuestionsHow accurate are Gucci's size charts?Gucci's size charts are tailored to the brand's patterns and materials, offering reliable guidance. Still, body shapes vary, so measure yourself before ordering.What if I'm between sizes?If you find yourself between sizes, consider how you prefer your garments to fit. Size up for a more relaxed feel, or size down for a snug, tailored look.Do Gucci shoes run true to size?Gucci shoes generally align with the brand's official charts. Measure your foot length and width, then compare it to the chart for the best match.Sizing TipsFor accurate sizing, measure yourself using a flexible tape measure. Compare your measurements to the provided charts. When shopping for shoes, take note of both length and width. Belts should be measured from the buckle to the hole you frequently use. For rings, measure your finger circumference or use a ring sizer for precision.