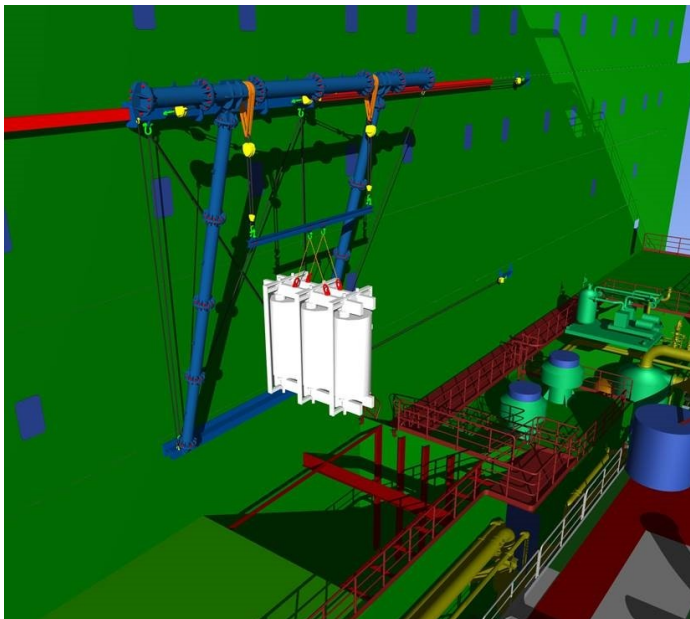




## MATERIAL HANDLING EQUIPMENT FPSO

Conbit has several solutions to provide lifting capacity at hard-to-reach locations. The space on new-to-build FPSO's is always very limited. The different components prevent easy access.

SBM Offshore contracted Conbit to provide its expertise in relation to handling of components that are unlikely to fail but are critical to the process. In case they do fail they need to be replaced on a very short notice.



Picture: 3D presentation of lifting solution

### PROJECT

- ✓ ENGINEERING
- ✗ PROCUREMENT
- ✗ INSTALLATION

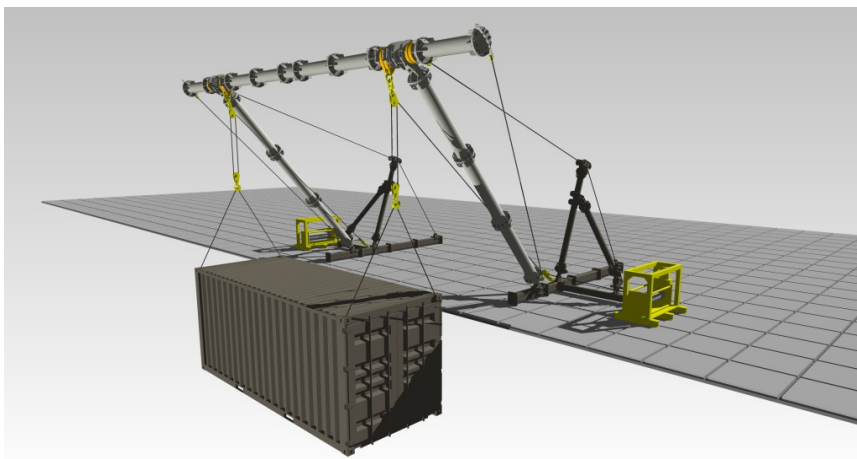
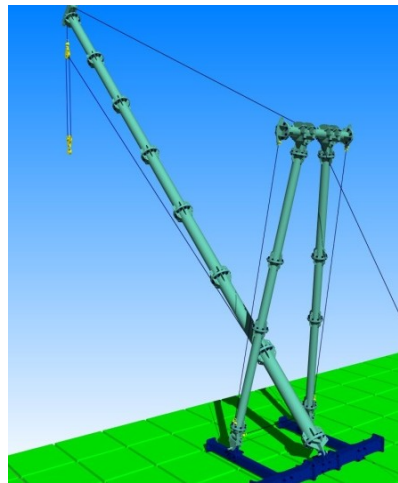
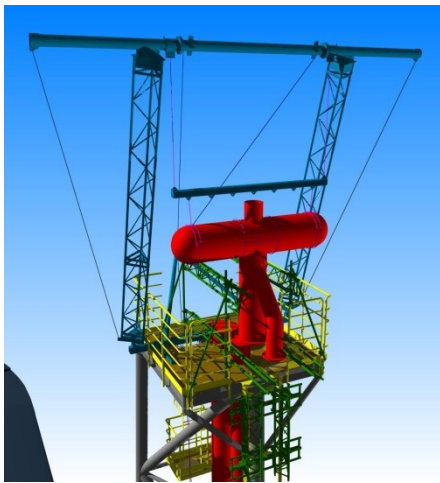
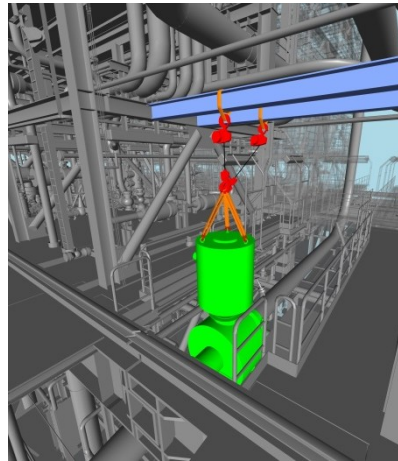
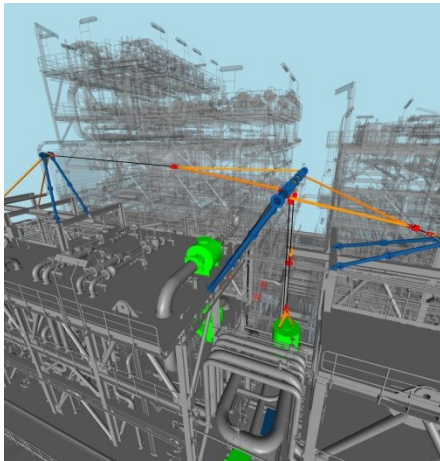
### Client

SBM Offshore NV

### Project Name

Shutdown valve handling  
Transformer handling





Pictures: 3D Models – Lifting configurations for material handling

**MATERIAL HANDLING EQUIPMENT**  
Shutdown valves are unlikely to fail, but in case they do, the need to be replaced on a very short notice is high, since production needs to be continued. Flare tips and other equipment are more likely to fail. Conbit can provide lift weight solutions for these challenges.

Most of our systems are constructed from components that can be man handled. The components are standard and different lifting configurations can be created. These lifting configurations are operated by lift winches or hoists. With these systems Conbit provides easier Material Handling. Material Handling specifications for new-to-build FPSO's can be met.

*"MATERIAL HANDLING SPECIFICATIONS HAVE A CLEAR OBJECTIVE, WHICH IS TO ELIMINATE COMPLEX HANDLING OPERATION IN CASE OF FAILURE OF COMPONENTS. THE SYSTEMS CONBIT ENGINEERS, PROVIDE THE CLIENT WITH THE REQUIRED FLEXIBILITY. OF COURSE, SAFETY AND EFFICIENCY ARE THE KEY ASPECTS DURING THE ENGINEERING STAGES"*