



## SPIDER CRANE FOR OFFSHORE DEPLOYMENT

In 2011 Conbit recognized the Spider Crane as an efficient method to install their special lifting equipment on offshore platforms or other remote locations.

The first deployment of the Spider Crane was to support an accommodation module installation offshore. During this project, the spider crane assisted in assembling the temporary lift structure.

The use of the spider crane decreased the number of offshore days and PoB's during the project significantly.



Picture: Conbit to operate Spider Crane on helideck of offshore platform.

### PROJECT

- ✓ ENGINEERING
- ✗ PROCUREMENT
- ✓ INSTALLATION

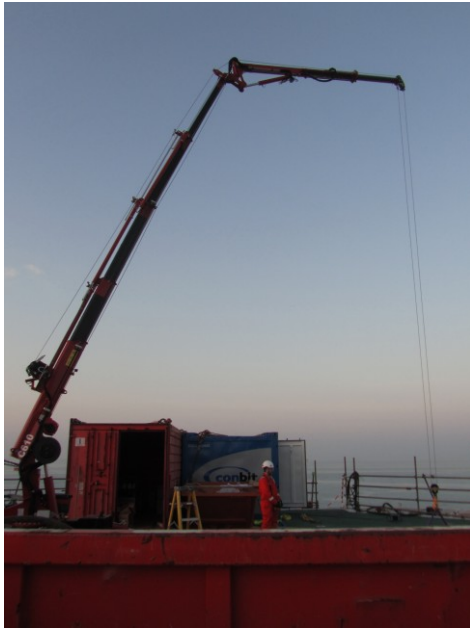
### Client

Offshore Operators /  
EPC Contractors

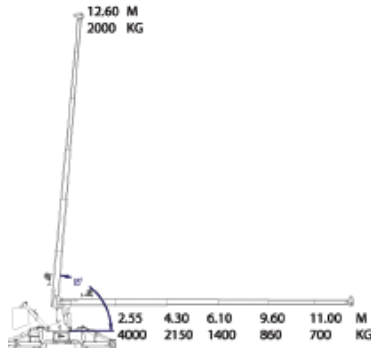
### Year

Since 2011

# SPIDER CRANE FOR OFFSHORE DEPLOYMENT



Picture: Conbit Spider Crane in use.



## THE SYSTEM

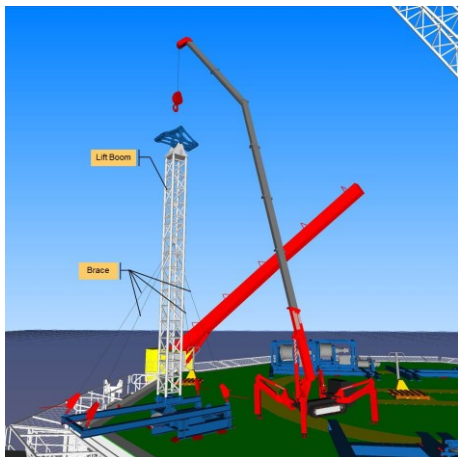
The Spider Crane (*or Compact Crane*) is a mobile crane that drives on tracks. For stability during lifting extra support legs are incorporated in the system.

## MAIN ADVANTAGES

- Easy to transport offshore.
- Safe method of installing modular structures.
- Cost and time efficient solution for installation projects.
- Conbit technicians are familiar to work with the spider crane in offshore environments.



Picture: Spider Crane is operated remotely.

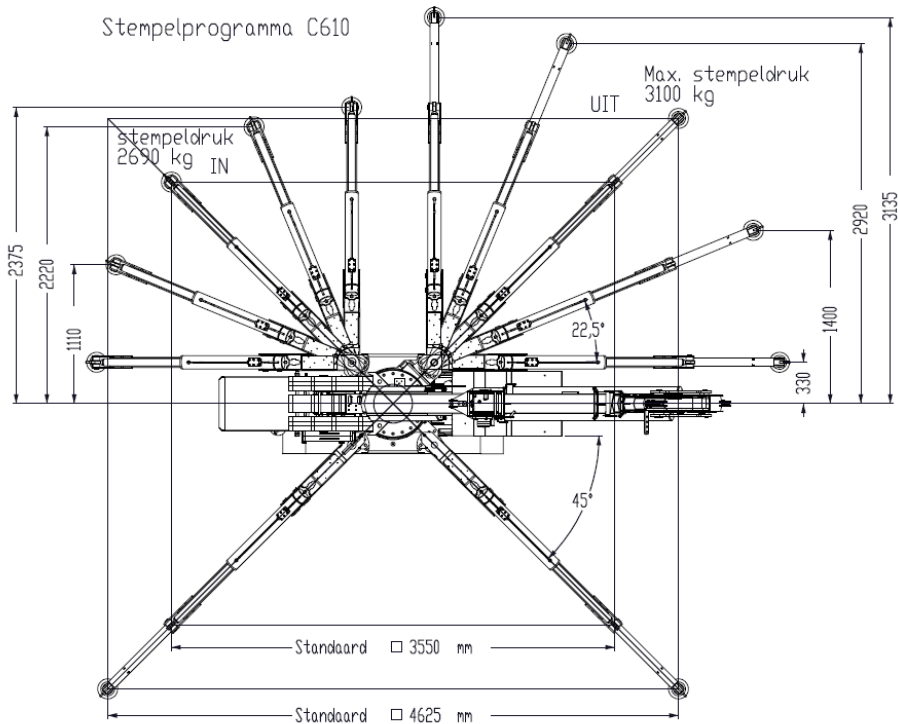


Picture: 3D Project Preparation is vital.

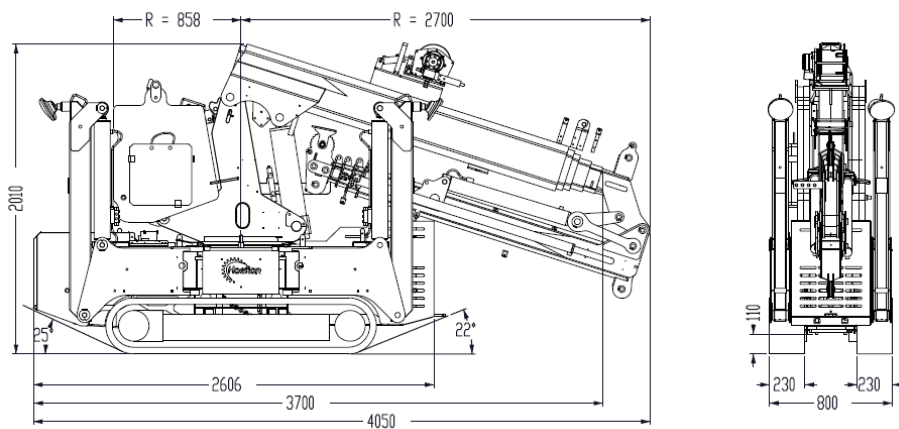
*"BY BROADENING ONES  
PERSPECTIVE ONE  
MIGHT GAIN NEW  
IDEAS THAT MAKES  
ONES LIFE EASIER"*

# SPIDER CRANE FOR OFFSHORE DEPLOYMENT

01SD036- C



Picture: Outrigger Legs Support Arrangement.



Picture: Transport Dimensions Spider Crane.

## CONBIT'S SERVICE

Conbit offers a turnkey service. We pick up the module or component at the manufacturer and do not leave it out of sight until it is installed on the offshore unit.

Structural engineering and special lifting expertise form the basis of any project. The Spider Crane offers us the flexibility to install structures offshore safe and efficient.

Conbit's added value is not only with installing, but we possess the skills to find the best solution for the customer. Sometimes this involves a spider crane, sometimes more traditional methods will be advised.

**"LET CONBIT FIND THE  
BEST SOLUTION FOR  
YOUR COMPLEX  
INSTALLATION PROJECT"**