



SL500 – MODULAR LIFTING SYSTEM

Since many years Conbit uses light weight aluminum components to create lifting capacity on difficult to reach locations. One of the systems we use is known as the SL500 Modular Lifting System.

With the SL500 Modular Lifting System many configurations can be assembled, which vary in capacity, outreach and slewing capability.



Picture: SL500 used to install 45 mT accommodation Module

PROJECT

✓ ENGINEERING

✗ PROCUREMENT

✓ INSTALLATION

Client

Offshore and Onshore

Project Name

SL500 Modular Lifting System

SL500 – MODULAR LIFTING SYSTEM

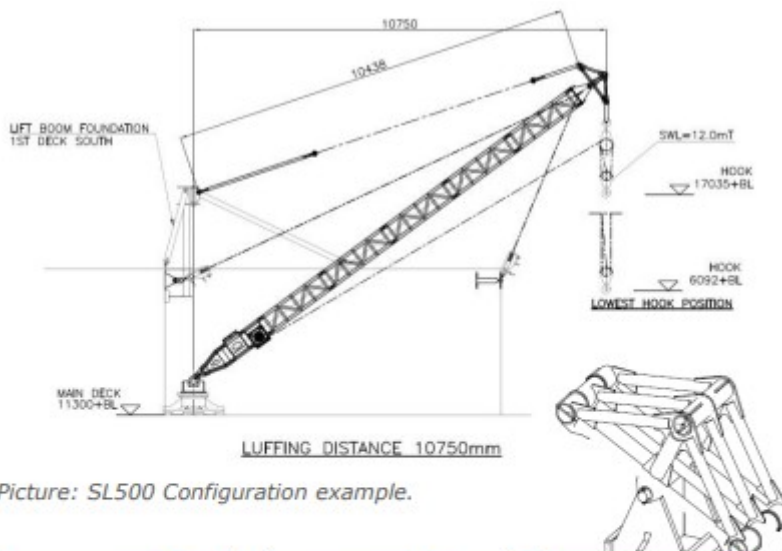
01SD035-C



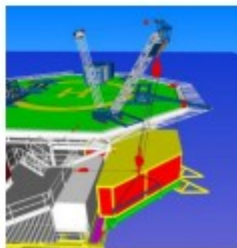
Picture: SL500 to replace deck crane pedestal



Picture: SL500 to assist with cable pulling



Picture: SL500 Configuration example.



Picture: SL5003D pictures taken from lifting procedures.

VARIOUS ASSEMBLIES

The modular lifting system can be configured for different applications:

- Slewing Application
- Fixed with back cable for extra capacity.
- Fixed base frame, base frame on wheels or on skid rails.

All systems are light weight and can be packed in 10" or 20" offshore containers. The systems are operated by lift winches.

EXAMPLE ASSEMBLIES

12 mT @ 10.75 mtr.

System weight: 2,200 kg

Heaviest component: 250 kg

Slewing: No

5 mT @ 10.2 mtr.

System weight: 1,500 kg

Heaviest component: 300 kg

Slewing: Yes

7.5 mT @ 8.5 mtr.

System weight: 1,400 kg

Heaviest component: 300 kg

Slewing: Yes

24.7 mT @ 5 mtr.

System weight: 2,600 kg

Slewing: No

12 mT @ 8.9 mtr.

System weight: 450 kg

Heaviest component: 86 kg

Slewing: No

**"MODULAR LIFTING
SYSTEM CAN BE
ASSEMBLED AT
EVERY LOCATION."**