

# New Neighborhood

## NEW CONNECTIONS

Nestled within the cherished grounds of Wesley Commons, **Arbor Ridge** is a captivating new pocket neighborhood. Thirty-three charming cottage homes, thoughtfully clustered around inviting green spaces, create a true sense of community and connection.



Step into a time when communities fostered genuine connections between neighbors, where front porches were the perfect spot to catch up on the day's events. A place where friendship and a helping hand were always close by. A neighborhood where people truly knew and cared for each other. Experience a sense of shared responsibility and love for the community, where everything you need is within walking distance, and you feel truly connected to a vibrant hub of activity.

## THIS IS LIFE AT

# Arbor Ridge

AT WESLEY COMMONS



**CALL (888) 298-6222**  
to inquire about our newest  
senior living opportunities!

## WESLEY COMMONS

1110 Marshall Road  
Greenwood, SC 29646

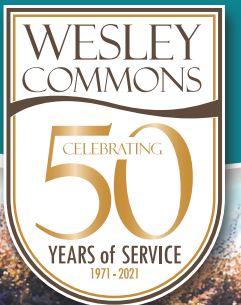
[wesleycommons.org](http://wesleycommons.org)



## DISCOVER

# Arbor Ridge

OUR **NEWEST**  
COTTAGE NEIGHBORHOOD



# Small Towne Charm

## BIG-CITY LIFESTYLE

## WESLEY COMMONS

### CAMPUS AMENITIES

- Dining Options:
  - Brook Bistro
  - The Arbor Room Cafe
  - The Silver Leaf Restaurant
- Wellness Complex
- Library
- Business Center
- Post Office/Shipping
- On-Site Banking
- Asbury Hall
- Outdoor Pavillion
- Community Gardens
- Hair Salon
- Pickle Ball Courts
- Putting Green
- Bocce Ball Court
- Horseshoe Court
- Shuffleboard Courts
- Woodworking Shop
- 3+ Miles of Nature Walking Trails
- Arts & Game Rooms
- Dog Park

### Arbor Ridge



**Arbor Ridge** combines charming cottages with modern interiors, gourmet kitchens, and scenic outdoor spaces. Walkable paths connect to the Village Green and the greater campus, offering a close-knit community and enriching lifestyle.

### CHOOSE YOUR COTTAGE STYLE

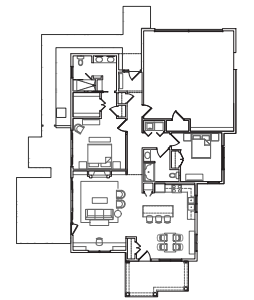
**Park-Front Cottage:** Private side terraces, creating intimate outdoor spaces nestled between cottages.

**Street-Front Cottage:** Generous outdoor rear terraces overlooking adjacent forested nature paths, providing a serene retreat.



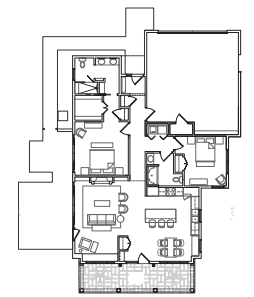
#### THE CEDAR | Park-Front

2 BR / 2 BA  
1,619 sq. ft.



#### THE CYPRESS | Park-Front

2 BR / 2 BA  
1,624 sq. ft.



#### THE ELM | Street-Front

2 BR / 2 BA  
1,551 sq. ft.

