



Fasteners for safety critical applications

Rail Fasteners

On track for the future



Brand Promises & Mission Statement:

Dependable.

Adaptable.

Sustainable.

The Cooper Turner Beck Group's mission is to lead the industry in delivering innovative, safety-critical fastening solutions that drive the globe towards a more resilient and more sustainable future.

Our dedication to quality, sustainability, and customer satisfaction underpins our end-to-end comprehensive service.

From development to manufacture and distribution, we work together to fasten a secure and sustainable future for generations to come.

The Rail Market

We manufacture a complete range of track fasteners for the rail market.

The quality and diversity of this product makes them suitable for the world's railway.

Bolts and nuts are manufactured to BS, UIC and other rail standards.

Diameters range from M16 (3/4") to M27 (1 1/8"), with lengths to suit many different applications.

Over 100 years of manufacturing expertise for the rail market has enabled us to build up unrivalled knowledge and experience in the supply of coach screws, track bolts, holding down studs and a comprehensive range of rail maintenance items that meet the exacting standards of rail contracts.

Our Commitment to Quality

Product quality is of paramount importance to us. Many of the fasteners that we manufacture, and supply are safety critical and must function in the most testing of environments.

Controls on the supply of all rail fasteners are rigid but because the majority are manufactured 'in-house', the highest standards and specifications can be guaranteed.





Our Products – Sleeper Screws

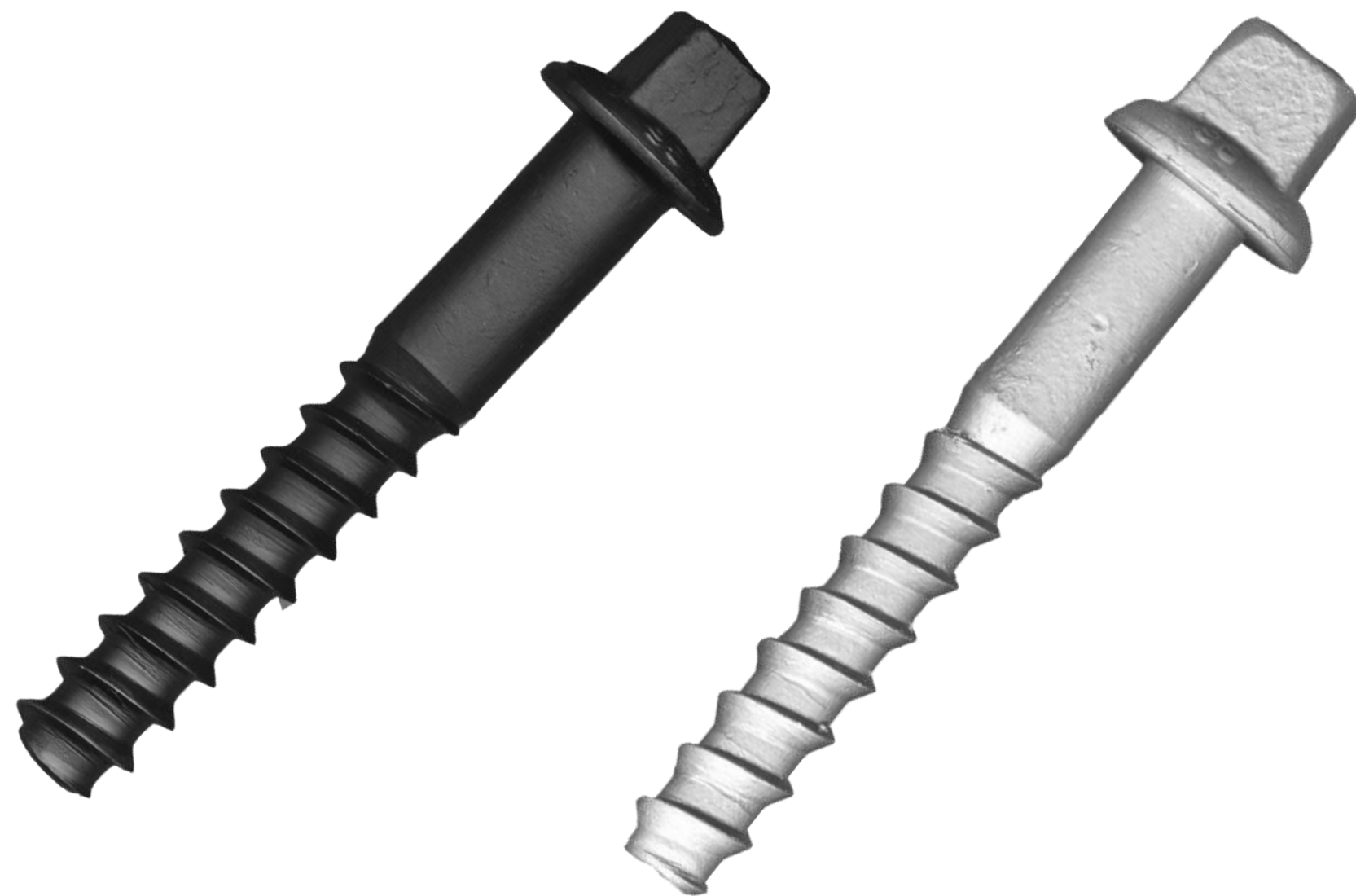
We manufacture a wide range of sleeper screws for use in either wood or concrete sleepers.

They can be supplied with either square or rectangular heads.

PRODUCT SPECIFICATION

Range: up to M24 (1") diameter & up to 300mm (12") long

Finishes: Self colour, Galvanized, Sherardized & Chemically blackened





Our Products – Holding Down Bolts

We manufacture an unrivalled range of holding down bolts and anchor systems.

PRODUCT SPECIFICATION

A comprehensive selection of diameters, sizes and designs are available for both fixed and retractable applications.

Customer specific designs can also be manufactured.

BOLTING SYSTEMS

For additional customer flexibility, some anchor bolts are available as complete systems and include anchors, nuts, helical springs, spring washers, sockets ferrules and resin.





Our Products – Fishbolts & Nuts

We have developed and manufacture a comprehensive range of fishbolts and nuts in a variety of lengths, head shapes and diameters.

HEAD SHAPES

- Square Round Hex
- Square Round Square
- Cup Pear Square
- Pan Pear Square
- Cup Oval Hex
- Cup Pear Hex
- Cup Nib Hex

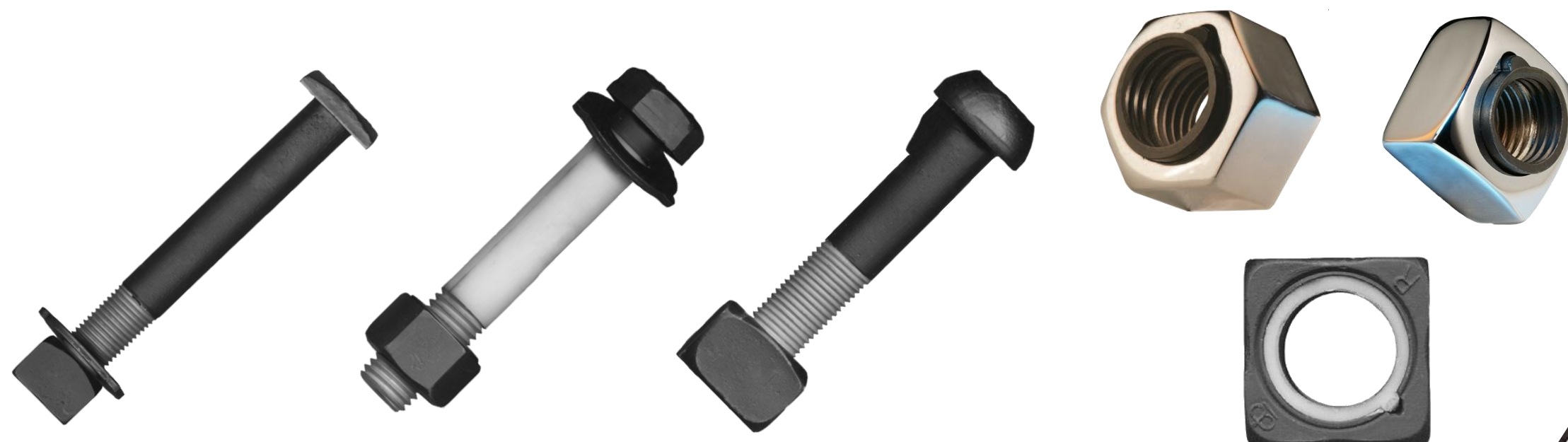
V-Grade fish bolts are also readily available.

Diameters: M12 (1/2") to M30 (1 1/4")

Length: As required

Finish: Self-colour, Galvanized, Sherardized & Chemically blackened

A complete range of flat washers, through-hardened washers, spring washers, plain nuts, collared nuts and “Renlok” – self-locking nuts are available for use with the fishbolts which are usually supplied as assemblies to suit joining requirements.





Our Products – Switch & Crossing Bolts

Switch and crossing bolts and associated products form a large part of our product range. These bolts are usually supplied complete with “Renlok” nuts and are either made with a square head and square neck or square head and round neck.

Diameters: M24 (1") , M27 (1 1/8"), M30 (1 1/4")

Length: Up to 40" (1000mm) (larger sizes can be manufactured)

The above is complemented by a range of thin head stock rail bolts, stretcher bolts, T-head clip bolts and ‘top hat’ stud bolts.





Our Products – Rail Clips

We manufacture a range of heavy-duty clips that are used to fasten the rails to the underlying baseplate.

The clips are manufactured from a high silicon spring steel and are hot formed, quenched and tempered in a semiautomatic process.

The elastic fastenings continue to grip the rail under vibration and are proven on all types of sleeper and ballastless track.

They are widely used in turnouts and crossings with the advantage of having no threads to strip or corrode.

They are virtually maintenance free and have a straightforward use in operation such as rail changing and distressing.

The finished clips are painted in various colours to differentiate the clip types.





Our Products



LX SCREW
Part No.
57/48932 1" x 12"



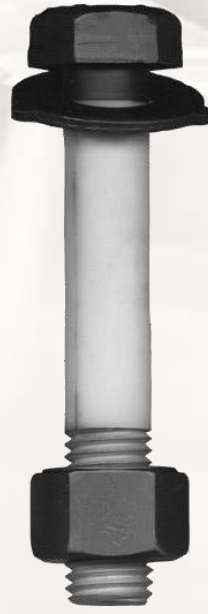
CHAIR SCREWS
All 1" x 6 5/16"
Part No.
57/48191 - A.S. Screw
57/48193 - M. Screw
57/48195 - H.T. Screw (50 T.T.)



MUCKLE BOLT
Part No.
57/150299



CONCRETE BEARER CHAIRSCREW
Part No.
57/048037



INSULATED SHANK FISH BOLTS



'T' HEAD CLIP BOLT
Complete with nut
Part No.
57/48116 7/8" x 3 1/2"
57/48102 7/8" x 2 7/16"



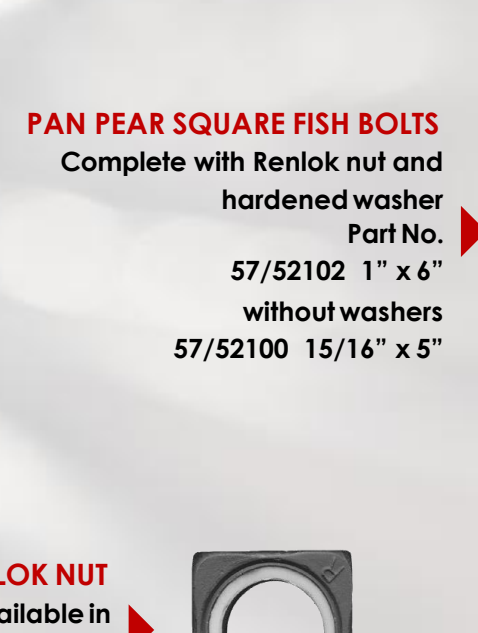
THROUGH BOLT
Complete with nut and washer
Part No.
57/48084 7/8" x 7 3/4"
for wood
57/48054 7/8" x 9 1/4"
for concrete



SQUARE ROUND SQUARE 'V' GRADE CROSSING BOLT
Complete with Renlok nut and through hardened washer
Part No.
57/150011 - 150077
1" up to 770mm



RENLOK NUT
Available in
15/16", 1" and 1 1/8"
diameters



PAN PEAR SQUARE FISH BOLTS
Complete with Renlok nut and hardened washer
Part No.
57/52102 1" x 6"
without washers
57/52100 15/16" x 5"



STOCK RAIL BOLT
Complete with Renlok nut and through hardened washer
Part No.
57/23201 1 1/8" x 8"



SWITCH & CROSSING 'V' GRADE BOLT (thin head)
Complete with Renlok nut and through hardened washer
Part No.
57/023499 1" X 7 3/4"
57/023500 1" X 8"



STUD BOLT (TOP HAT BOLT)
Complete with Renlok nut
Part No.
57/048417 1 1/8" X 7 3/4"



ROUND BLACK FISHBOLT
Complete with Renlok nut and through hardened washer
Part No.
57/52104 1" x 6 1/4"
57/52110 15/16" x 5 1/2"



SQUARE ROUND SQUARE 'V' GRADE FISHBOLT
Complete with Renlok nut and through hardened washer
Part No.
57/52203 15/16" X 6 1/4"
without washer
57/52202 1 1/8" x 6 1/4"
57/52230 1 1/8" x 7"
2 washers



FANG BOLT
Part No.
57/048383 7/8" x 7"
57/048417 7/8" x 7 1/2"
57/048373 7/8" x 8"
57/048377 7/8" x 8 1/2"
57/048379 7/8" x 10"



End-to-End Capabilities

1

Consultancy

Our experts collaborate with clients to define project requirements, ensuring precision in design, material selection, and regulatory compliance.

2

Prototyping

We bring initial designs to life through rapid prototyping, allowing clients to assess performance and confirm specifications before full production.

3

Testing

Our ISO-certified testing ensures every product meets the highest safety and durability standards through comprehensive stress and environmental trials.

4

Manufacturing

Using advanced techniques like CNC machining and automation, we deliver complex, high-quality fasteners tailored to each client's needs.

5

Storage

Our strategically located warehouses support just-in-time delivery, with optimal storage conditions that maintain product integrity.

6

Distribution

With 21 global facilities, our distribution network ensures timely, cost-effective delivery to keep client projects on schedule.



**Cooper
Turner
Beck**

Fasteners for safety critical applications