



VEDIC CITY

PRAANA

|

SOMA

|

GRAAMA

Vedic City is a visionary, self-sustaining township that blends ancient Vedic wisdom with modern wellness and sustainable elegance.

Rooted in timeless tradition, it creates a transformative living experience where nature, innovation, and holistic well-being converge.





प्राण

PRAANA

Meaning: In Sanskrit, "Praana" translates to "life force" or "vital energy," representing the vital life force that permeates all living beings.

Reasoning: Naming the 140-acre farm lands and wellness retreat "Praana" emphasizes its focus on revitalizing the life force within individuals through holistic practices. The term suggests a sanctuary where guests can reconnect with their inner vitality, aligning with the Vedic essence of the project.

सोम

SOMA

Meaning: In Vedic tradition, "Soma" refers to a sacred ritual drink believed to bestow immortality and divine inspiration. It is also personified as a deity associated with the moon.

Reasoning: Assigned to the 77-acre plot, "Soma" embodies spiritual elevation and ritual purity. It creates a strong connection to Vedic traditions, inviting devotees to experience a space where sacred practices and divine energy converge.

ग्राम

GRAAMA

Meaning: "Graama" is a Sanskrit term for "village" or "community," symbolizing a well-rooted, culturally vibrant settlement.

Reasoning: For the 15-acre residential plots, "Graama" conveys the vision of a modern community enriched by ancient values. It reflects a lifestyle where residents share a sense of belonging and collective harmony, reinforcing the project's commitment to nurturing a connected, thriving environment.



PRAANA



SOMA

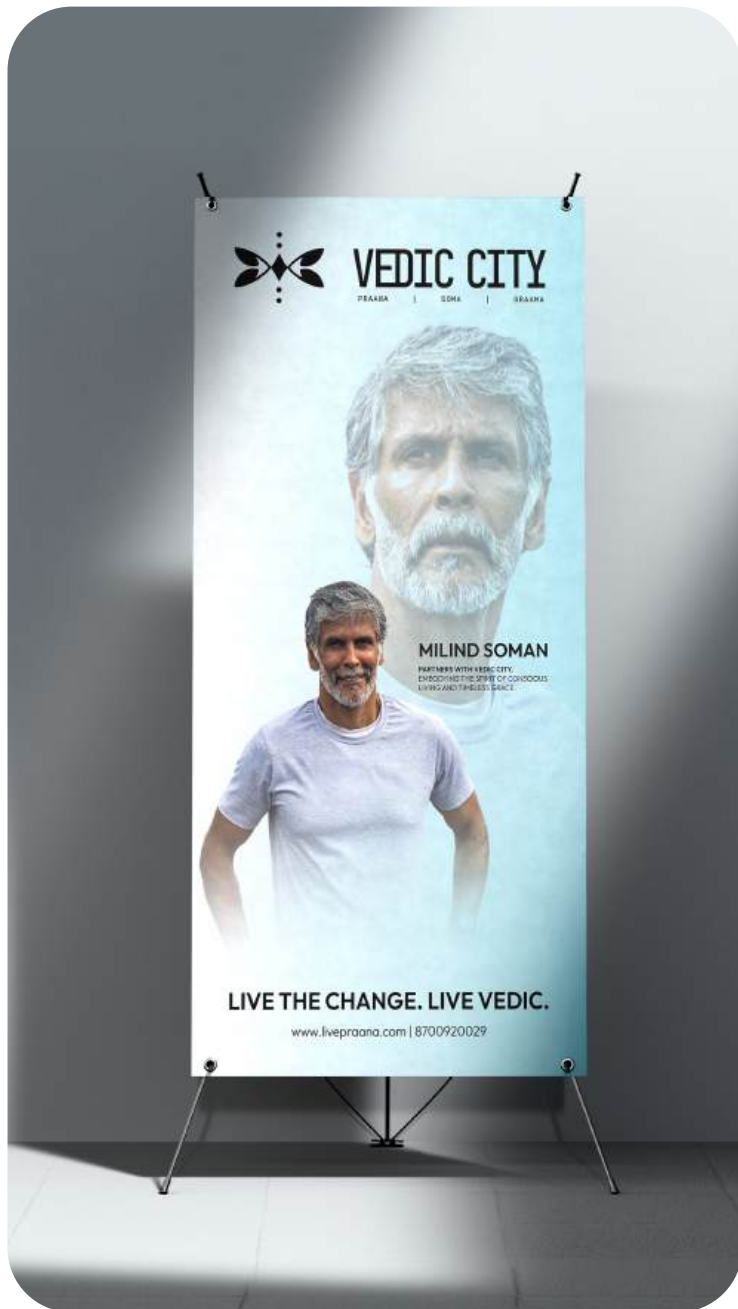


GRAAMA



Praana is the inaugural phase of Vedic City a sanctuary of wellness and mindful living. Sprawled over 140 acres, Praana redefines the art of living by blending ancient wisdom with modern sustainability.

Praana is an integral part of Vedic City's vision where ancient Vedic iconography, sacred geometry, and sustainable design merge. The built environment reflects this ethos through thoughtfully planned architecture, natural landscaping, and community-centric amenities.



VEDIC CITY x MILIND SOMAN

Vedic City proudly announces the appointment of **Milind Soman** as its official Brand Ambassador. Renowned for his enduring vitality, strength, and commitment to holistic well-being, Milind embodies the core values that define Vedic City. His alignment with a lifestyle rooted in wellness, balance, and a deep connection with nature makes him an ideal representative of the brand. Through this collaboration, Vedic City and Milind Soman aim to inspire a way of life where every breath rejuvenates, every step reconnects with the earth, and every moment fosters inner harmony and mindful living.

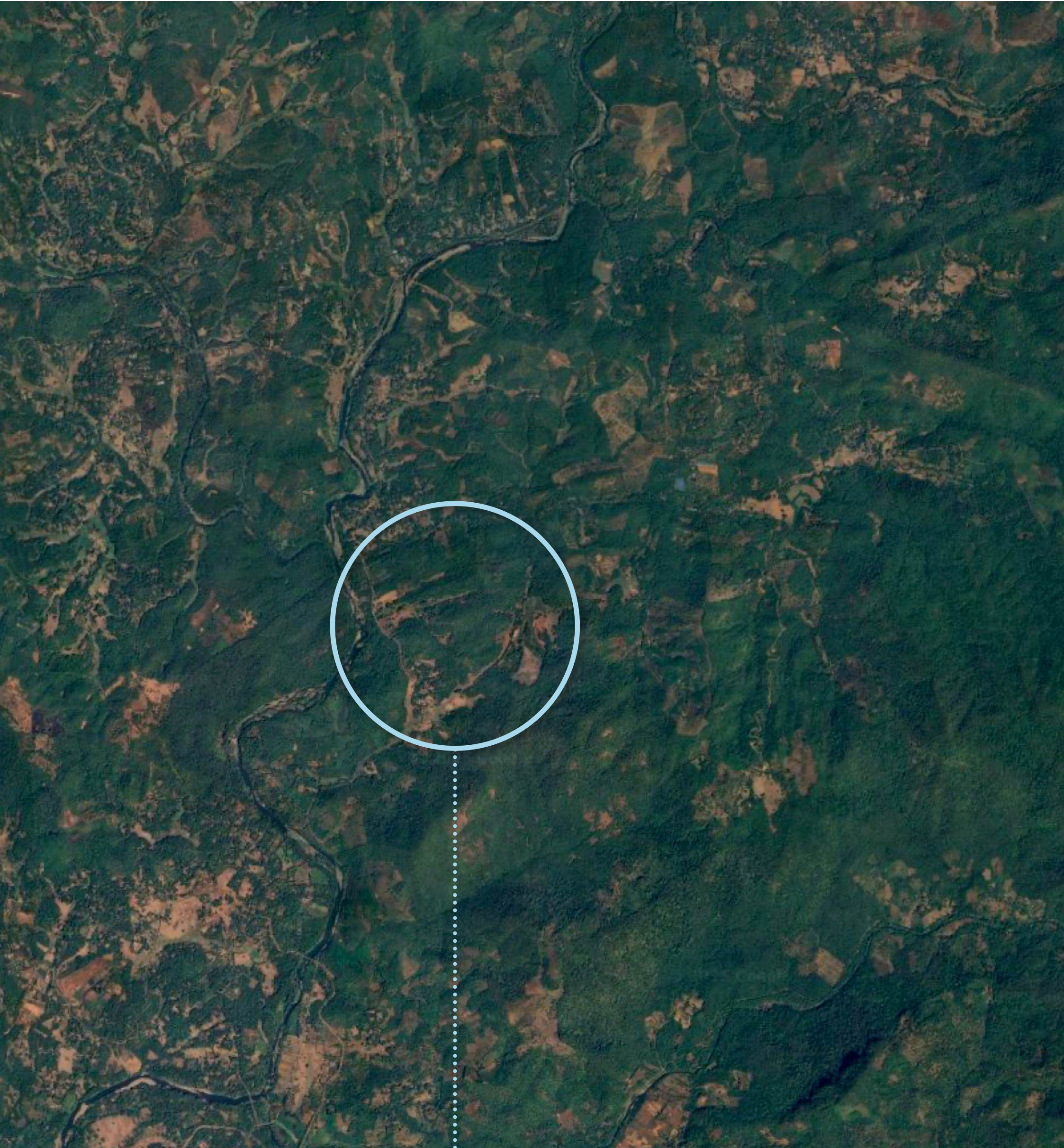


SCAN TO WATCH OUR COMMERCIAL FEATURING MILIND SOMAN



*AMBOLI GHATS







25KMS.

from MOPA

15KMS.

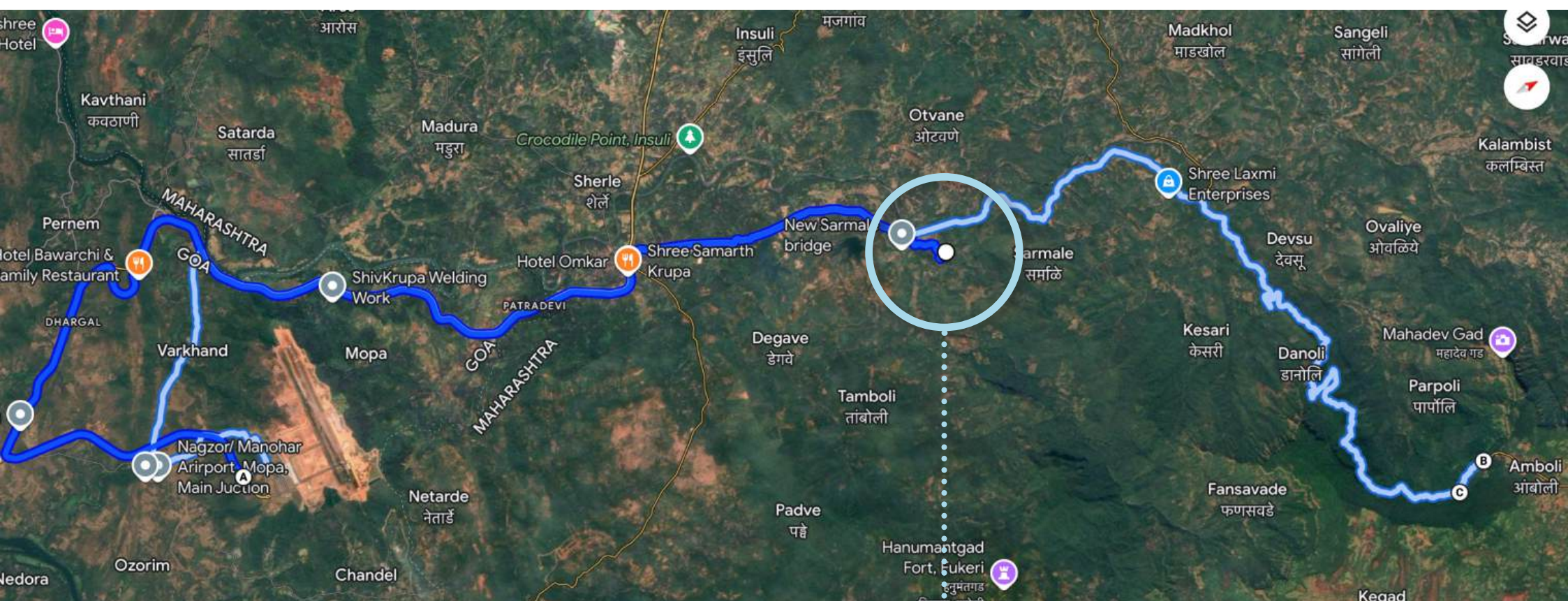
from Amboli Ghats & Waterfall

500MTS.

from proposed Shaktipeeth Highway

7KM.

from NH 66



PRAANA

Foundation stone for cricket stadium in Goa by 2025: Rohan

TNN / Jul 25, 2024, 00:05 IST

SHARE

PRINT

AA

FOLLOW US



GCA secretary Rohan Gauns Desai (right) with BCCI president Roger Binny

Panaji: There is still no unanimity among registered clubs over the site for the proposed international cricket stadium but Goa Cricket Association (GCA) secretary Rohan Gauns Desai has assured everyone that the foundation stone for the stadium would be laid before the term of the managing committee ends next year.

The Directorate of Sports and Youth Affairs (DSYA) has acquired land admeasuring 9,19,789sqm at Dhargal in Pernem taluka for the Sports City.

ADVERTISEMENT

GERARD BUTLER'S

DEN OF THIEVES 2

PANTERA

ENGLISH | HINDI | TAMIL | TELUGU

STREAMING NOW

SUBSCRIBE NOW

₹799/YEAR

THE TIMES OF INDIA

PDF

Business News / Business / Industry / Centre Plans To Set Up Mini Silicon Valley In Goa: Piyush Goyal

Centre plans to set up mini Silicon Valley in Goa: Piyush Goyal

In September, Goyal proposed a new township dedicated to entrepreneurs, startups, innovators, and disruptors, envisioned as India's Silicon Valley.

Written by FE Bureau

November 9, 2024 03:15 IST



ADVERTISEMENT

Convenient banking,
Powered by innovation and trust!

Genext Banking With Human Touch

Market Data

Retail Banking

Digital Banking

NRI Services

Daily flights

Goa: Delta Corp's 90 acre township project to be complete by 2027

Newton Sequeira / TNN / Updated: Oct 24, 2022, 12:41 IST

SHARE

PRINT

AA

FOLLOW US

Delta Corp, which recently received the necessary permissions from the Goa government to go ahead with the Rs 3,000 crore integrated resort-cum-casino township at Dhargal, plans to start work on the project in January. The company, which recorded a historic high in revenue for the July-September quarter, also said that it: ... [Read More](#)



PANAJI: Delta Corp, which recently received the necessary permissions from the Goa government to go ahead with the Rs 3,000 crore integrated resort-cum-casino township at Dhargal, plans to start work on the project in January. The company, which recorded a historic high in revenue for the July-September quarter, also said that its new Rs 150 crore offshore casino vessel will be ready after 12 months.

GERARD BUTLER'S

DEN OF THIEVES 2

PANTERA

ENGLISH | HINDI | TAMIL | TELUGU

STREAMING NOW

SUBSCRIBE NOW

₹799/YEAR

TOI ePaper >

MONTH END OFFER

THE TIMES OF INDIA

PDF

TOI+ Exclusive Stories >

- Women's heart condition is often misdiagnosed. What you need to know
- Gaya pind daan goes online but can

“The integration of sustainable tourism infrastructure, placemaking initiatives, and responsible development practices significantly enhances site value, making it an attractive investment while preserving the region’s ecological and cultural heritage.”

1. Tourism infrastructure (EV charging stations, rest areas, signage) enhances accessibility and increases land value .
2. Placemaking initiatives improve aesthetics, functionality, and safety, making the site more attractive
3. Sustainable tourism practices (water conservation, waste management) ensure long-term ecological and economic value
4. Major infrastructure projects (highways, luxury resorts, film city) boost real estate demand and investment potential
5. Local employment opportunities in hospitality and eco-tourism strengthen community development

PDMC for Swadesh Darshan 2.0 for Maharashtra, Inception Report, Ministry of Tourism, Government of India

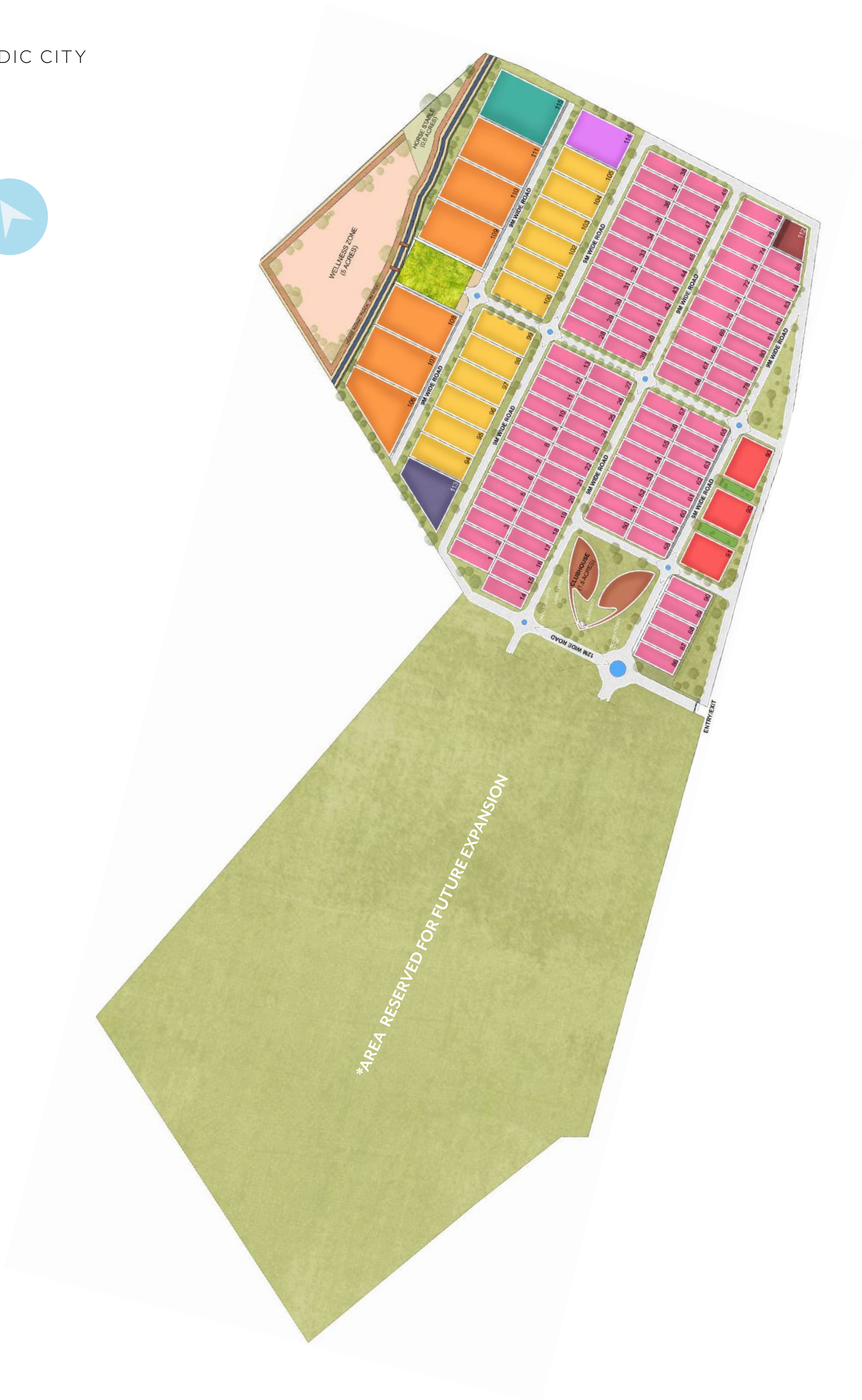


Figure 14 Sindhudurg District thematic tourism map
Reference: [googlemaps.com](https://www.google.com/maps)



PRAANA PROPOSED ENTRY GATE*

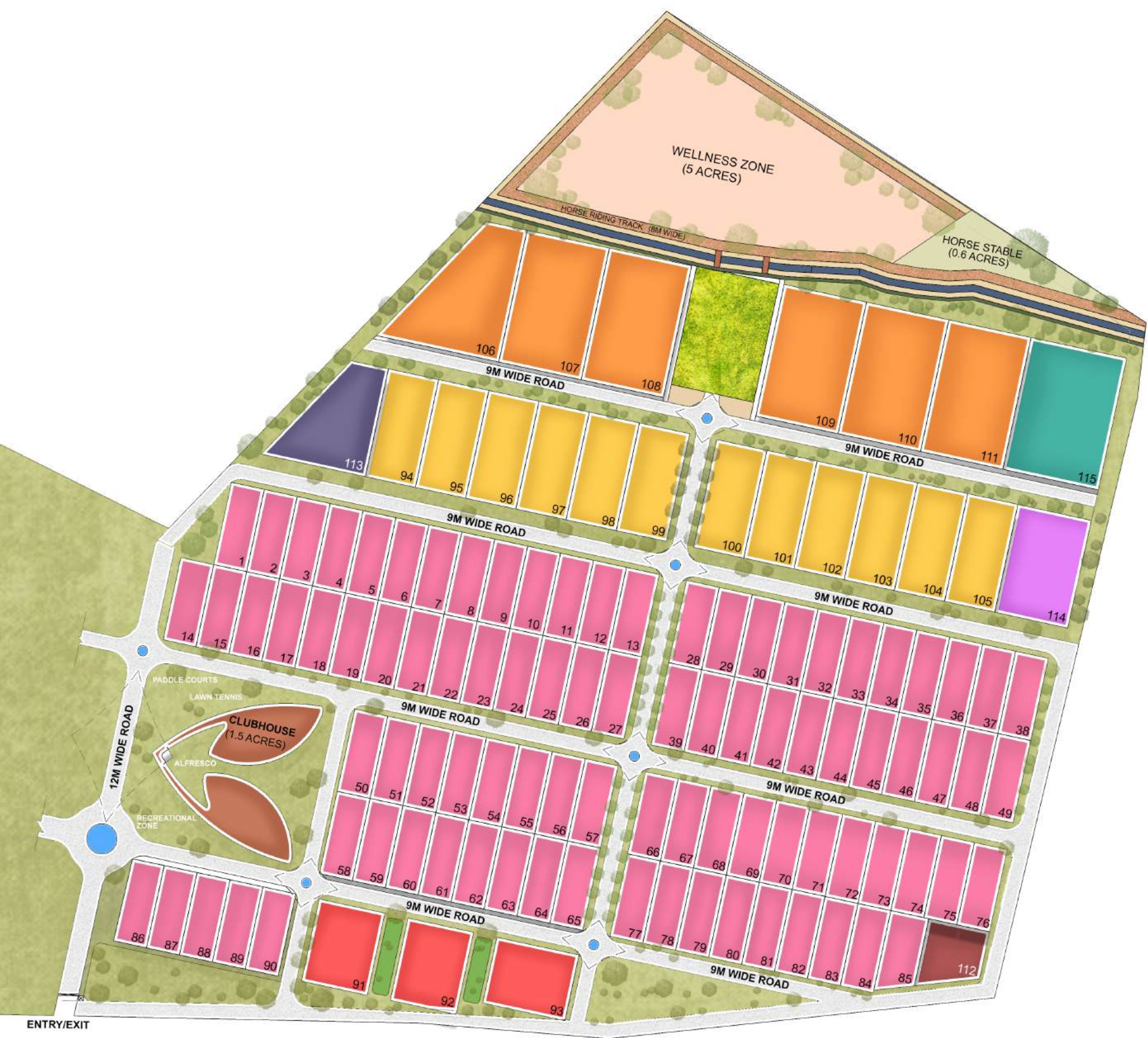




MASTERPLAN OVERVIEW

Phase 1 of Praana is meticulously designed for harmonious and sustainable living environments, seamlessly integrating nature with modern conveniences. A tranquil water body hosts a 5 Acre wellness retreat, while thoughtfully crafted landscaping maintains environmental balance. Diverse plot sizes, the Praana Clubhouse, jogging and horse riding tracks, wide roads, and other amenities foster a vibrant and well-connected community promoting well-being and mindful living.





AREA PROGRAMME

Club House	4.00 ACRES (19,500 SQ.YD.)
Wellness & Recreation	6.60 ACRES (31,945 SQ.YD.)
Golf Putting	0.88 ACRES

PLOT	SIZE	AREA
1 - 90	22 x 50 MT.	1320 SQ.YD.
91- 93	40 x 50 MT.	2400 SQ.YD.
94-105	30 x 65 MT.	2400 SQ.YD.
106 - 111	50 x 80 MT.	4785 SQ.YD.
112		1540 SQ.YD.
113		3360 SQ.YD.
114	45 x 65 MT.	3485 SQ.YD.
115	58 x 80 MT.	5560 SQ.YD.



OVERVIEW

Forest bathing, or Shinrin-yoku, is a Japanese practice of immersing oneself in nature to enhance well-being. It is not just about being in the forest, but about deeply experiencing it—engaging the senses, breathing in the pure air, and absorbing the calming energy of the natural world.

The landscaping of Praana is inspired by the Japanese concept of Forest Bathing, combined with floating landscapes in select areas of the site. By embracing the existing terrain, it offers a way of living within the forest, fostering a sense of harmony and connection. It is an invitation to slow down, breathe deeper, and rejuvenate. A life designed not just for luxury, but for an ever-evolving journey of well-being and transformation.

140 acres (560,000 sqm) with 390,000 sqm plotted area

Dedicated 20,000 sqm for Naturopathy Wellness

Sports: Jogging track, Horse riding track, badminton, lawn tennis, paddle tennis, cricket, golf putting area, and more. **Club:** swimming pool, fitness centre, card room, pool table, kids play area, library, meditation room. 3-Tier gated security, 100% power backup.

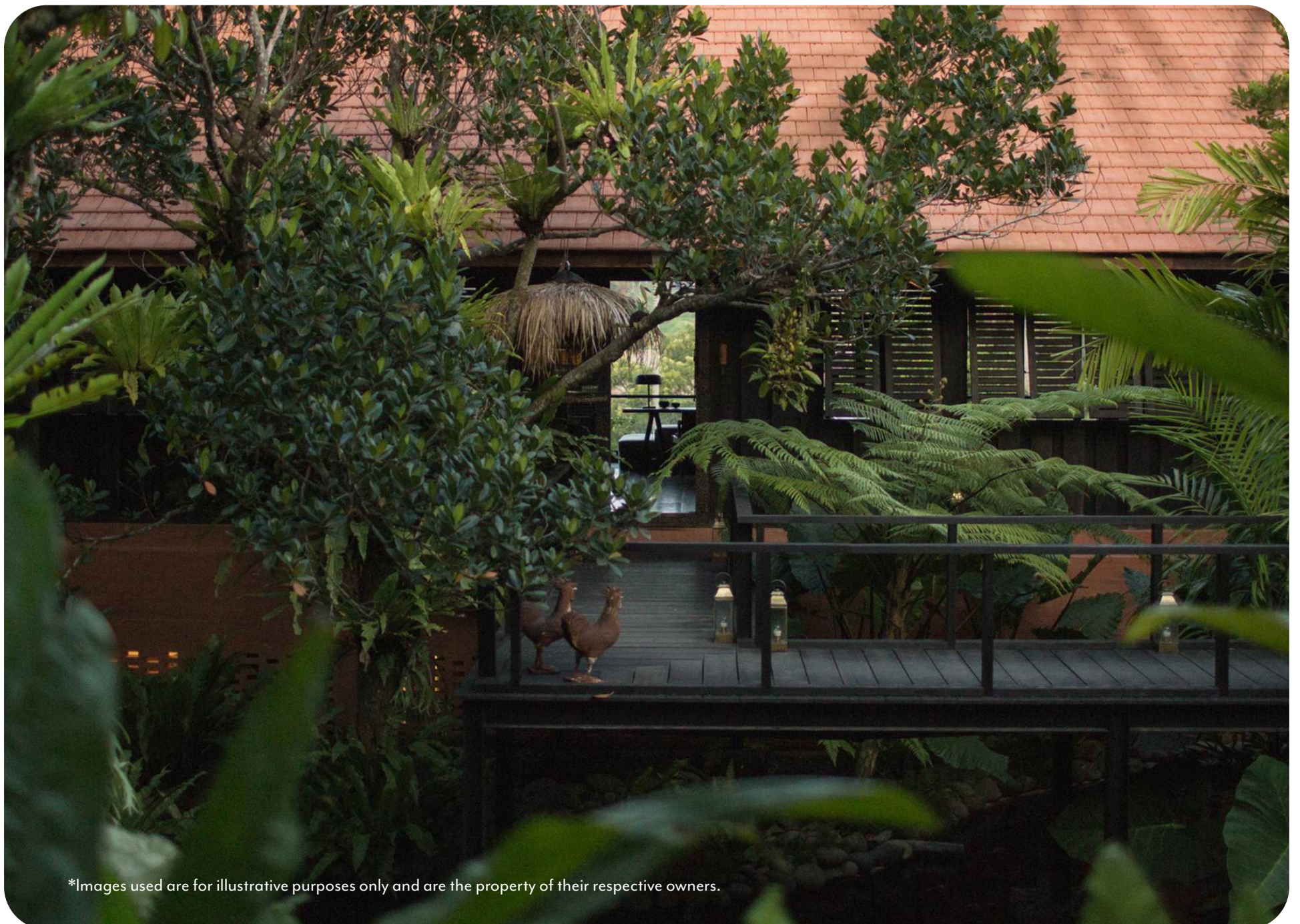
Self-sustained township with solar power and carbon credits

Organic Living: Embrace a self-sufficient lifestyle with home-grown vegetables and fruits, ensuring purity, health, and sustainability.

Serene Landscapes: Thoughtfully designed gardens and lush green spaces create a peaceful sanctuary for relaxation and well-being.

Exclusive Elevation: Every aspect of design and living is curated for sophistication, blending sustainable Vedic principles with world-class luxury.

Harmonious Living: A perfect balance of nature, tranquility, and modern comforts, redefining green luxury in a sustainable community.



*Images used are for illustrative purposes only and are the property of their respective owners.



RESIDENTIAL OFFERINGS

Plot Sizes: Starting from 1,320 sq yards to 5,560 sq yards.

Limited to only farm houses ensuring exclusivity.

Each plot features its own boundary and private gate.

Our project includes meticulously designed internal landscaping and comprehensive development support, along with assistance for villa development and leasing, complemented by maintenance provided by our wellness brand.

INVESTMENT & POSSESSION DETAILS

Attractive payment plan: 25% down payment;

Balance on possession

Possession within 24 months

High potential for long-term appreciation and rental returns.

THE PRAANA ADVANTAGE

Unparalleled connectivity and location benefits

A comprehensive wellness and lifestyle ecosystem

A self-sustaining township with green energy and carbon credits

A transformative, health-focused environment for both young professionals and retirees





SITE IMAGE



PAYMENT PLAN

On Application	15 LAKHS
On Allotment	25% (LESS APPLICATION AMOUNT)
On Possession	75%

*PLC, IFMS, development charges, club charges, and all other applicable charges will be payable at the time of offer of possession.



SCAN TO READ MORE



A SPACE BEYOND SQUARE FOOTAGE

The tone of the evening was set by **Mr. Akashdeep Narang** who spoke about the philosophical lifestyle shift that this township would represent. Speaking less like a developer and more like a curator of a way of life, he painted a picture of Vedic City as a place where wellness seamlessly integrates into the very fabric of daily existence.

Vedic City is a self-sustaining township based on Vedic wisdom. With hundreds of acres designed around forest-planned layouts, wellness zones, and sustainable ecosystems, the township draws from the timeless wisdom of Vedic living.

Mr. Akashdeep Narang
Director, Vedic City



DEVELOPED BY



PARTNERS



This catalogue is fully recyclable and reflects our ongoing commitment to thoughtful, sustainable practices in everything we create.



PRAANA

SOUTH* COMING SOON

VEDIC CITY
WWW.LIVE-VEDIC.COM

