



ग्राह | GRAAMA
BY VEDIC CITY



15 acres in serene North of Goa

This boutique residential enclave within Vedic City is designed for those seeking a harmonious blend of modern comfort and ancient values.

GRAAMA fosters a conscious lifestyle built on connection, balance, and collective well-being. A place where community thrives, and the soul finds space to breathe.



WWW.LIVE-VEDIC.COM



प्राण

PRAANA

Meaning: In Sanskrit, "Praana" translates to "life force" or "vital energy," representing the vital life force that permeates all living beings.

Reasoning: Naming the 140-acre farm lands and wellness retreat "Praana" emphasizes its focus on revitalizing the life force within individuals through holistic practices. The term suggests a sanctuary where guests can reconnect with their inner vitality, aligning with the Vedic essence of the project.

सोम

SOMA

Meaning: In Vedic tradition, "Soma" refers to a sacred ritual drink believed to bestow immortality and divine inspiration. It is also personified as a deity associated with the moon.

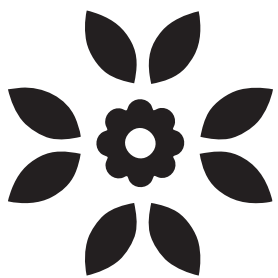
Reasoning: Assigned to the 77-acre plot, "Soma" embodies spiritual elevation and ritual purity. It creates a strong connection to Vedic traditions, inviting devotees to experience a space where sacred practices and divine energy converge.

ग्राम

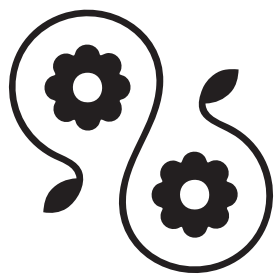
GRAAMA

Meaning: "Graama" is a Sanskrit term for "village" or "community," symbolizing a well-rooted, culturally vibrant settlement.

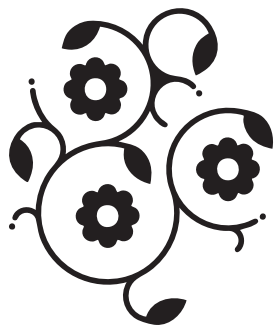
Reasoning: For the 15-acre residential plots, "Graama" conveys the vision of a modern community enriched by ancient values. It reflects a lifestyle where residents share a sense of belonging and collective harmony, reinforcing the project's commitment to nurturing a connected, thriving environment.



PRAANA



SOMA



GRAAMA

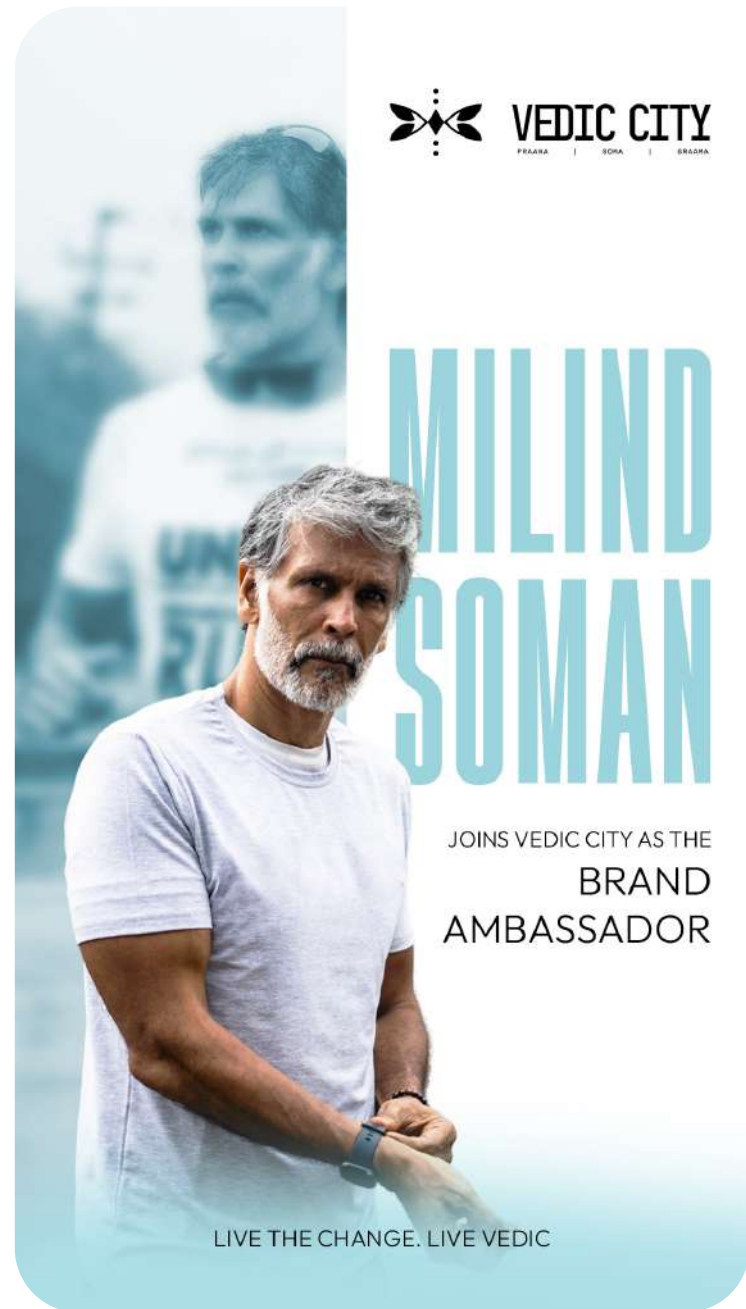
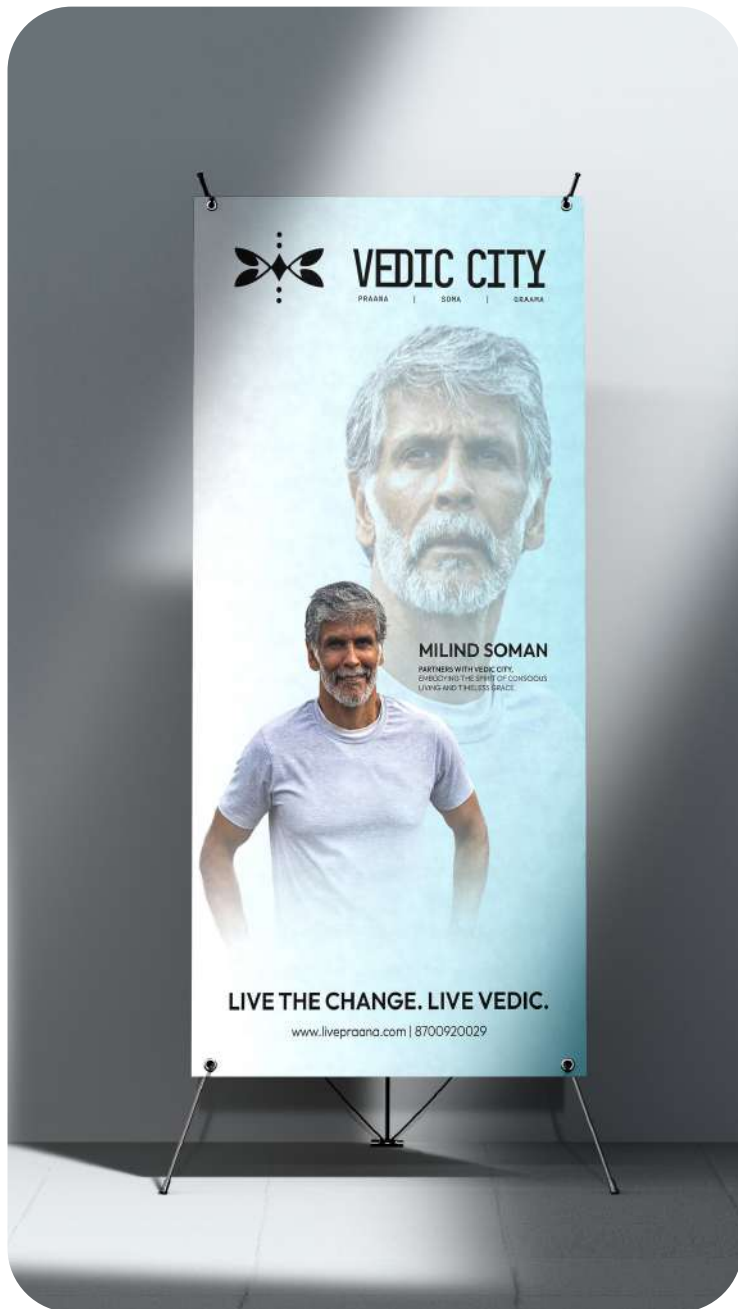
VEDIC CITY



*Images used are for illustrative purposes only and are the property of their respective owners.

Graama is designed for those who seek not just a home, but a way of life one that blends contemporary comfort with the timeless wisdom of ancient values. Here, the essence of **community is reimagined**.

Graama is inspired by the spirit of the village not in its physical form, but in its emotional and cultural richness. A place where life unfolds with rhythm and meaning, and where connection, consciousness, and collective well-being form the foundation of everyday living.



VEDIC CITY x MILIND SOMAN

Vedic City proudly announces the appointment of **Milind Soman** as its official Brand Ambassador. Renowned for his enduring vitality, strength, and commitment to holistic well-being, Milind embodies the core values that define Vedic City. His alignment with a lifestyle rooted in wellness, balance, and a deep connection with nature makes him an ideal representative of the brand. Through this collaboration, Vedic City and Milind Soman aim to inspire a way of life where every breath rejuvenates, every step reconnects with the earth, and every moment fosters inner harmony and mindful living.



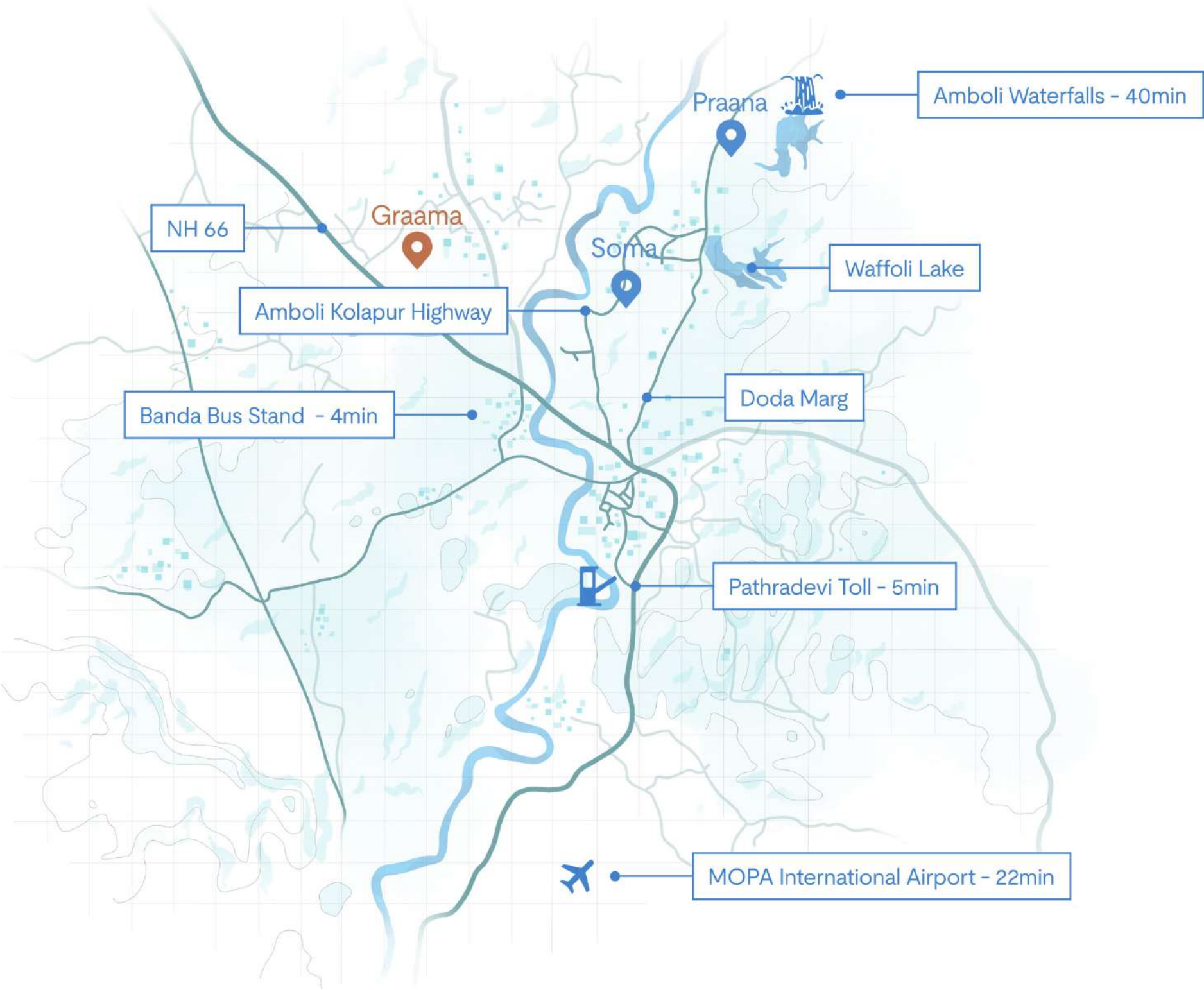
SCAN TO WATCH OUR COMMERCIAL FEATURING MILIND SOMAN



UPCOMING GRAAMA COMMERCIAL*



VEDIC CITY





0 MINS

from NH 66

5 MINS

from proposed Patra Devi Checkpost

22 MINS

from MOPA

40 MINS

from Amboli Waterfall

Foundation stone for cricket stadium in Goa by 2025: Rohan

TNN / Jul 25, 2024, 00:05 IST

SHARE

PRINT

AA

FOLLOW US



GCA secretary Rohan Gauns Desai (right) with BCCI president Roger Binny

Panaji: There is still no unanimity among registered clubs over the site for the proposed international cricket stadium but Goa Cricket Association (GCA) secretary Rohan Gauns Desai has assured everyone that the foundation stone for the stadium would be laid before the term of the managing committee ends next year.

The Directorate of Sports and Youth Affairs (DSYA) has acquired land admeasuring 9,19,789sqm at Dhargal in Pernem taluka for the Sports City.

ADVERTISEMENT

GERARD BUTLER'S

DEN OF THIEVES 2

PANTERA

ENGLISH | HINDI | TAMIL | TELUGU

STREAMING NOW

SUBSCRIBE NOW

₹799/YEAR

THE TIMES OF INDIA

PDF

Business News / Business / Industry / Centre Plans To Set Up Mini Silicon Valley In Goa: Piyush Goyal

Centre plans to set up mini Silicon Valley in Goa: Piyush Goyal

In September, Goyal proposed a new township dedicated to entrepreneurs, startups, innovators, and disruptors, envisioned as India's Silicon Valley.

Written by FE Bureau

November 9, 2024 03:15 IST



ADVERTISEMENT

Convenient banking,
Powered by innovation and trust!

Genext Banking With Human Touch

Market Data

Retail Banking

Digital Banking

NRI Services

Daily flights

Goa: Delta Corp's 90 acre township project to be complete by 2027

Newton Sequeira / TNN / Updated: Oct 24, 2022, 12:41 IST

SHARE

PRINT

AA

FOLLOW US

Delta Corp, which recently received the necessary permissions from the Goa government to go ahead with the Rs 3,000 crore integrated resort-cum-casino township at Dhargal, plans to start work on the project in January. The company, which recorded a historic high in revenue for the July-September quarter, also said that its ... [Read More](#)



PANAJI: Delta Corp, which recently received the necessary permissions from the Goa government to go ahead with the Rs 3,000 crore integrated resort-cum-casino township at Dhargal, plans to start work on the project in January. The company, which recorded a historic high in revenue for the July-September quarter, also said that its new Rs 150 crore offshore casino vessel will be ready after 12 months.

GERARD BUTLER'S

DEN OF THIEVES 2

PANTERA

ENGLISH | HINDI | TAMIL | TELUGU

STREAMING NOW

SUBSCRIBE NOW

₹799/YEAR

TOI ePaper >

MONTH END OFFER

THE TIMES OF INDIA

PDF

TOI+ Exclusive Stories >

- Women's heart condition is often misdiagnosed. What you need to know
- Gaya pind daan goes online but can

“The integration of sustainable tourism infrastructure, placemaking initiatives, and responsible development practices significantly enhances site value, making it an attractive investment while preserving the region’s ecological and cultural heritage.”

1. Tourism infrastructure (EV charging stations, rest areas, signage) enhances accessibility and increases land value .
2. Placemaking initiatives improve aesthetics, functionality, and safety, making the site more attractive
3. Sustainable tourism practices (water conservation, waste management) ensure long-term ecological and economic value
4. Major infrastructure projects (highways, luxury resorts, film city) boost real estate demand and investment potential
5. Local employment opportunities in hospitality and eco-tourism strengthen community development

PDMC for Swadesh Darshan 2.0 for Maharashtra, Inception Report, Ministry of Tourism, Government of India



Figure 14 Sindhudurg District thematic tourism map
Reference: [googlemaps.com](https://www.google.com/maps)

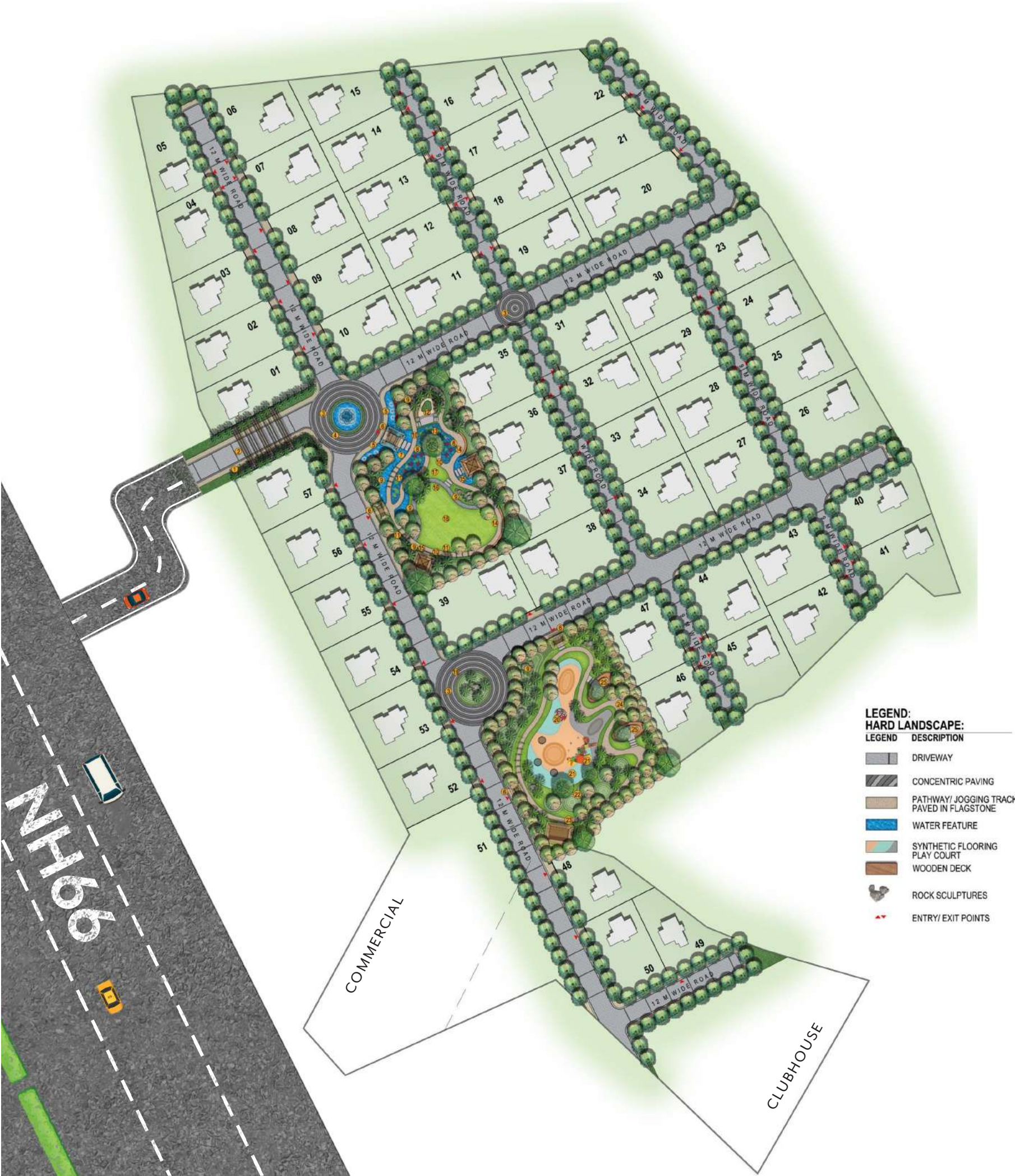


GRAAMA PROPOSED ENTRY GATE*



*Images used are for illustrative purposes only and are the property of their respective owners.

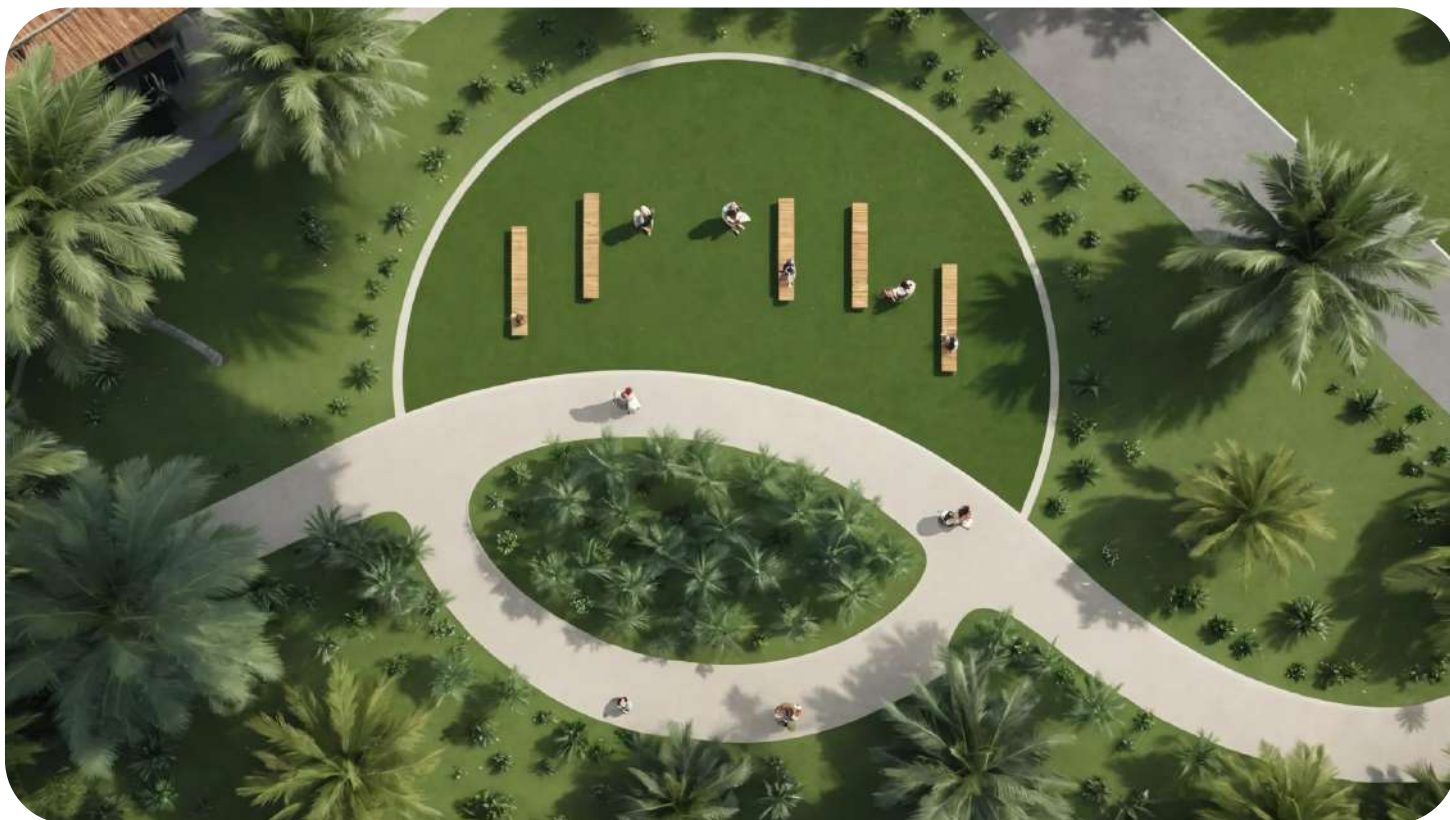
VEDIC CITY



MASTERPLAN OVERVIEW

A Landscape-Led Vision Rooted in Nature's Flow

The masterplan of Graama is inspired by the inherent **fluidity and grace of nature**. Taking cues from organic curves found in the natural world, the layout avoids rigid grids instead embracing soft transitions, seamless merges, and elegant movement across the site. At its core lies a thoughtful interplay of **waterscapes and softscapes** from reflective water bodies and ponds to curated green pockets, shaded parks, and meandering pathways. Curves are intentionally used not just as an aesthetic gesture but as a design language easing the movement of the eye, shaping spatial rhythm, and creating a calming, dynamic environment throughout the community.





AMENITIES

At Graama, every detail is thoughtfully considered to support a lifestyle of comfort, elegance, and quiet connection with nature.

- **Landscape-Driven Masterplan**

A nature-first layout where homes and common areas flow seamlessly into green zones, shaded walkways, and native plantations designed to promote balance, ease, and visual calm.

- **Refined Clubhouse**

A thoughtfully curated space featuring indoor recreation, elegant lounge areas, and spaces to gather or unwind blending functionality with understated luxury.

- **Recreational Parks & Greens**

Expansive open areas that serve as breathing spaces complete with walking trails, shaded seating, and pockets of calm for quiet reflection or leisurely gatherings.

- **Natural Play Zones for Children**

Imaginative, safe outdoor areas designed using natural materials encouraging hands-on exploration, creativity, and connection to the outdoors.

- **Pedestrian-Friendly Internal Pathways**

Meandering, green-lined trails that encourage walking, jogging, or cycling offering gentle rhythm to everyday movement while enhancing community interaction.

- **Eco-Sensitive Infrastructure**

Sustainability is built into the foundation including rainwater harvesting, solar-powered lighting, and organic waste management to reduce ecological impact.

- **Self-Sustained Township Model**

Powered by integrated solar solutions and designed to generate carbon credits, Graama promotes long-term energy efficiency and environmental responsibility.

- **3-Tier Gated Security**

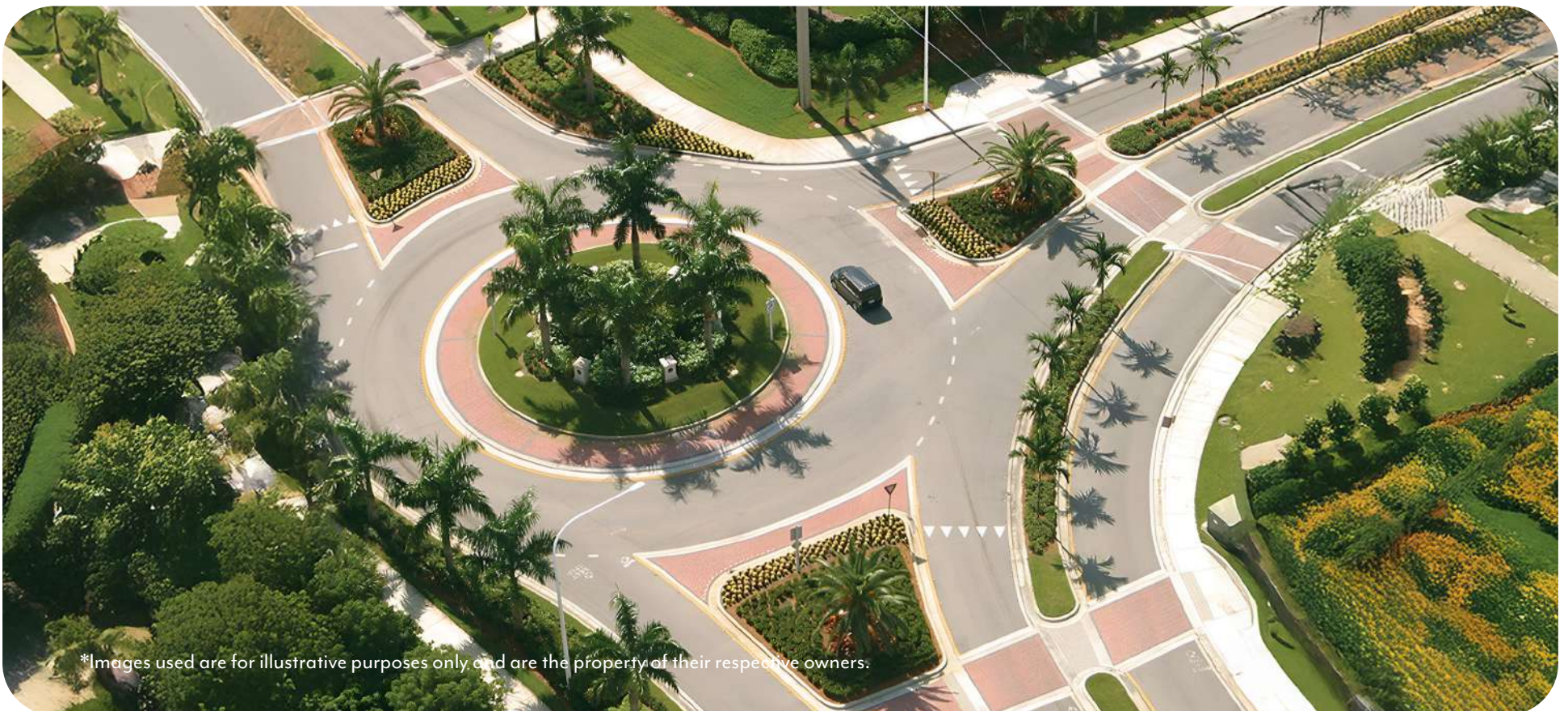
A comprehensive safety system with round-the-clock surveillance, access-controlled entry points, and trained security personnel to ensure peace of mind for all residents.

- **100% Power Backup**

Reliable power backup systems across the community ensuring uninterrupted comfort and functionality at all times.

- **Low-Density, Private Residences**

Boutique homes planned with generous setbacks, garden-facing layouts, and timeless



*Images used are for illustrative purposes only and are the property of their respective owners.





THE GRAAMA ADVANTAGE

UNPARALLELED CONNECTIVITY AND LOCATION BENEFITS.

A COMPREHENSIVE WELLNESS AND LIFESTYLE ECOSYSTEM.

TIMELESS DESIGN WITH LOW-DENSITY PLANNING AND BOUTIQUE RESIDENCES.

A THOUGHTFULLY CRAFTED ENVIRONMENT THAT NURTURES CALM, CONNECTION AND CONSCIOUS LIVING.







SCAN TO READ MORE



A SPACE BEYOND SQUARE FOOTAGE

The tone of the evening was set by **Mr. Akashdeep Narang** who spoke about the philosophical lifestyle shift that this township would represent. Speaking less like a developer and more like a curator of a way of life, he painted a picture of Vedic City as a place where wellness seamlessly integrates into the very fabric of daily existence.

Vedic City is a self-sustaining township based on Vedic wisdom. With hundreds of acres designed around forest-planned layouts, wellness zones, and sustainable ecosystems, the township draws from the timeless wisdom of Vedic living.

Mr. Akashdeep Narang
Director, Vedic City



DEVELOPED BY



This catalogue is fully recyclable and reflects our ongoing commitment to thoughtful, sustainable practices in everything we create.

VEDIC CITY
WWW.LIVE-VEDIC.COM

