

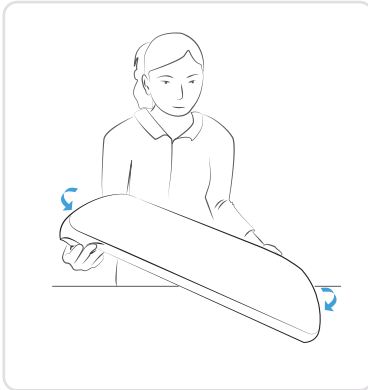


Maximized Spectral Power for Optimized Phototherapy

## Quick Reference Guide

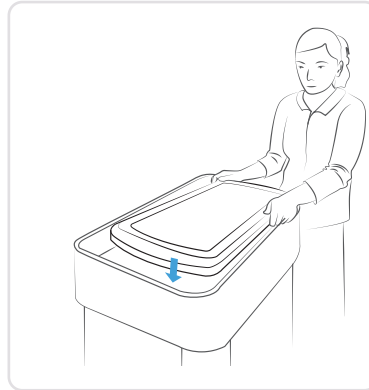
### SKYLIFE PHOTOTHERAPY SYSTEM

#### 1 VISUAL INSPECTION



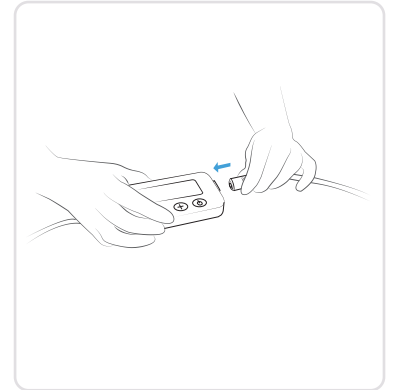
Inspect Skylife for damage or wear. Place CloudCover over device and GelMat.

#### 2 SKYLIFE PLACEMENT



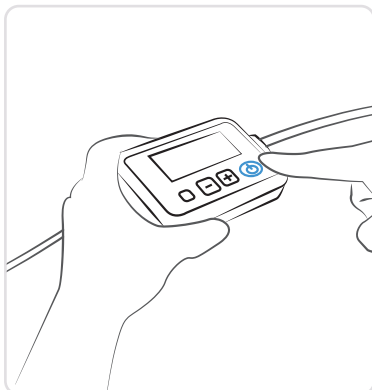
Place Skylife™ Phototherapy unit in location with walls (e.g. bassinet, warmer, crib, or incubator).

#### 3 SUPPLY POWER



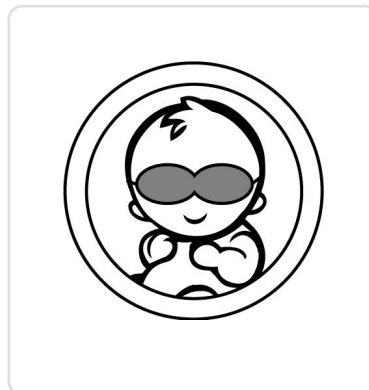
Attach Controller and Power Supply to device and place Controller outside enclosing walls of treatment area.

#### 4 POWER ON



Power on device and check light intensity, following institutional practices.

#### 5 EYE PROTECTION



Shield baby's eyes with protective phototherapy eye mask.

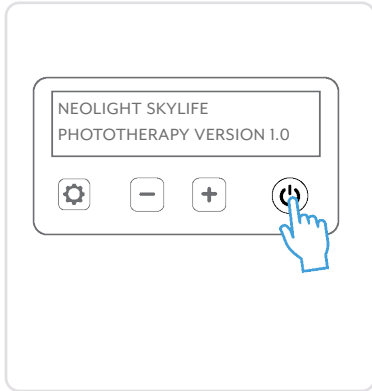
#### 6 BABY POSITION



Position baby on CloudCover. Ensure that only CloudCover and diaper is directly under baby.

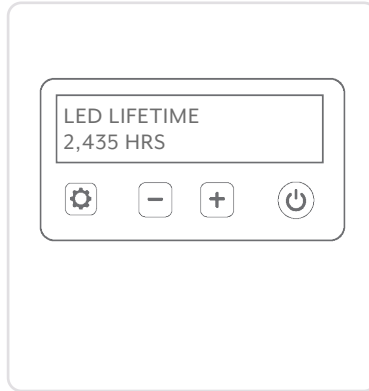
# POWER ON THE SYSTEM

## POWER ON



Press and hold power button to **START** device. System notifies once self-check completed\*.

## SYSTEM HOURS



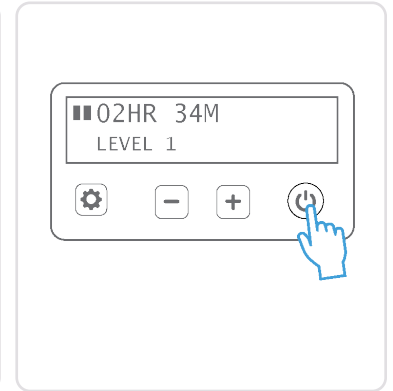
System will display LED lifetime\*\*. Verify that time is less than 25,000 hrs.

## LIGHT INTENSITY



Press '+' button once to begin treatment. Use '+' and '-' buttons to increase or decrease light intensity.

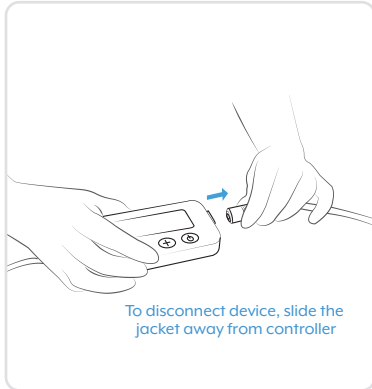
## INTERMITTENT THERAPY



**Pause treatment**, press power button once. Resume treatment, press power button once again.

# CLEAN THE SYSTEM

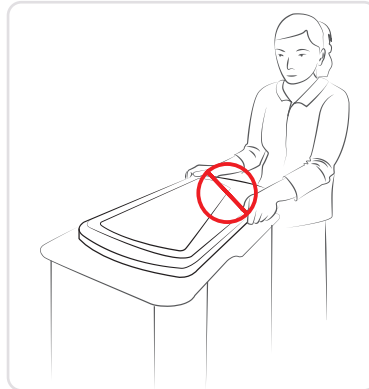
## POWER OFF



To disconnect device, slide the jacket away from controller

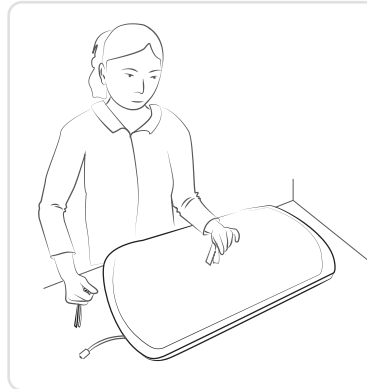
Press and hold power button to turn off. Always turn off and disconnect device from power outlet during cleaning.

## REMOVE COVER



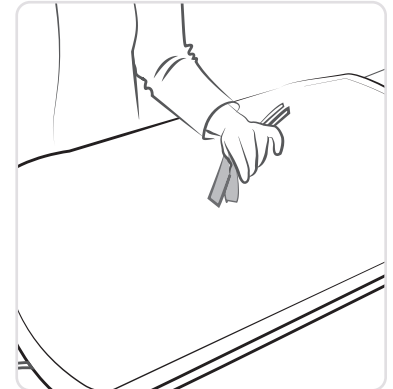
Remove CloudCover. **Do not remove GelMat during cleaning.**

## DISINFECT SYSTEM



Wipe down GelMat and exposed edges of Light Bed with disinfectant wipes. Allow surface to dry.

## FINISH CLEANING



Remove any remaining chemical residue using clean damp cloth. Allow surface to dry\*\*\*.

\*Actual display may vary based on software version.

\*\* LED lifetime refers to the number of hours the LED modules have been used to date.

\*\*\* See User Manual for Full Instructions, Warnings, Precautions, Contraindications, and Cleaning Instructions



User Manual: Access full instructions by scanning this code or go to [theneolight.com](https://theneolight.com) support page here: <https://bit.ly/3eTsky>

Learn more at [theneolight.com](https://theneolight.com)

NeoLight LLC  
1475 N. Scottsdale Rd. Suite 110  
Scottsdale AZ 85257  
[hello@theneolight.com](mailto:hello@theneolight.com)

**skylife**

Maximized Spectral Power for  
Optimized Phototherapy

**neolight**

MKT-002 Rev. D  
©2020 NeoLight, LLC. All Rights Reserved