

Future Deco Line R07direct

MATRIX
MIRRORS

 Made in the USA



ITEM CODE

R 0 7 d

① ② ③ ④ ⑤ ⑥ ⑦ ⑧ ⑨ ⑩



Additional Custom Specification Notes ⑪

(specify the accurate size in additional custom specification notes)

① Types

- R - Future Deco Line

② Styles

- 07 - Double Short Side Inset Frost

③ Lighting Styles

- d - Direct Light

④ Glass Sizes

- 2436 - 24" x 36"
- 2448 - 24" x 48"
- 3042 - 30" x 42"
- 3048 - 30" x 48"
- 3060 - 30" x 60"
- 3648 - 36" x 48"
- 3660 - 36" x 60"
- 3672 - 36" x 72"

- 4254 - 42" x 54"
- 4284 - 42" x 84"
- Custom (Ex: 3173 - 31.4" x 72.5")
(specify the accurate size in additional custom specification notes)

⑤ Outputs

- S - Standard Output
(550 lumens/ft; 4.5 watts/ft)
- H - High Output
(750 lumens/ft; 6 watts/ft)

Account for approximately 50% -60% light loss factor

- 60% for direct lighting
- 50% for indirect lighting

Use frost size on page 2 to calculate linear footage

⑥ Color Temperatures

- 00 - Color Switchable 2700k-6500k (90+ CRI)
(Only available with high output with **Touch Sensor** accessory)
- 00 - Color Switchable 1800k-6500k (90+ CRI)
(Only available with high output with **CCT Sync** accessory)
- 27 - 2700k (90+ CRI)
- 30 - 3000k (90+ CRI)
- 35 - 3500k (90+ CRI)
- 40 - 4000k (90+ CRI)
- 50 - 5000k (90+ CRI)

⑦ Drivers

- V - 100-277VAC 0-10 Dimmable
- E - 100-277VAC ELV Dimmable
- N - 100-277VAC Non-Dimming
(Mirrors with touch sensor have to use a non-dimming driver)

⑧ Mounting

- 1 - Vertical
- 2 - Horizontal

⑨ Frame Colors

- BF - Black Frame
- GF - Gold Frame
- SF - Silver Frame
- WF - White Frame
- BR - Bronze Frame
- CF - Custom Frame
(specify color on website)

⑨ Accessories

- NA - None
- TS - Touch Sensor
- AF - Anti-Fog Demister
- NL - Night Light

- AT - Anti-Fog & Touch Sensor
- NT - Night Light & Touch Sensor
- AN - Anti Fog & Night Light
- AL - Anti-Fog, Night Light & Touch Sensor

- CT - CCT Sync Switch
- CF - CCT Sync & Anti-Fog
- CN - CCT Sync & Night Light
- CL - CCT Sync, Anti-Fog & Night Light

⑩ Additional Custom Specification Notes

- Low-Iron Glass
- Powder Coated Chassis
- Antimicrobial Powder Coat
- Custom Inset & Frost Sizes (Up to 2 inches)

Please punch holes before the dashed line

Please punch holes before the dashed line

MATRIX MIRRORS

ACCESSORY DESCRIPTIONS

Anti-Fog Demister (120v power supply)

Available Sizes

- 8" x 30"
- 11" x 14"
- 13" x 14"
- 12" x 18"
- 18" x 22"
- 18" x 34"

Controllers

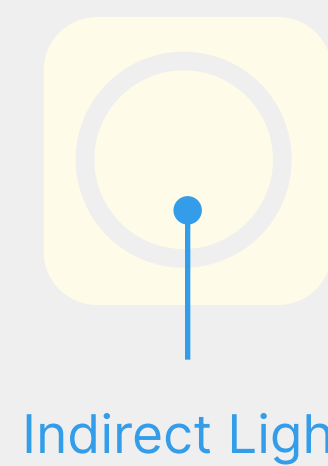
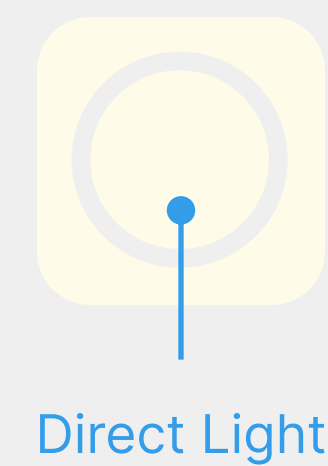
Touch Sensors

- **On/Off Dim**
 - White when Lights ON
 - Orange when Lights OFF
 - Hold 2 seconds to turn Touch Sensor Light OFF
- Color Temperature Switchable between **2700k to 6500k**
- **Custom Logo** available

Direct/ Indirect Styles

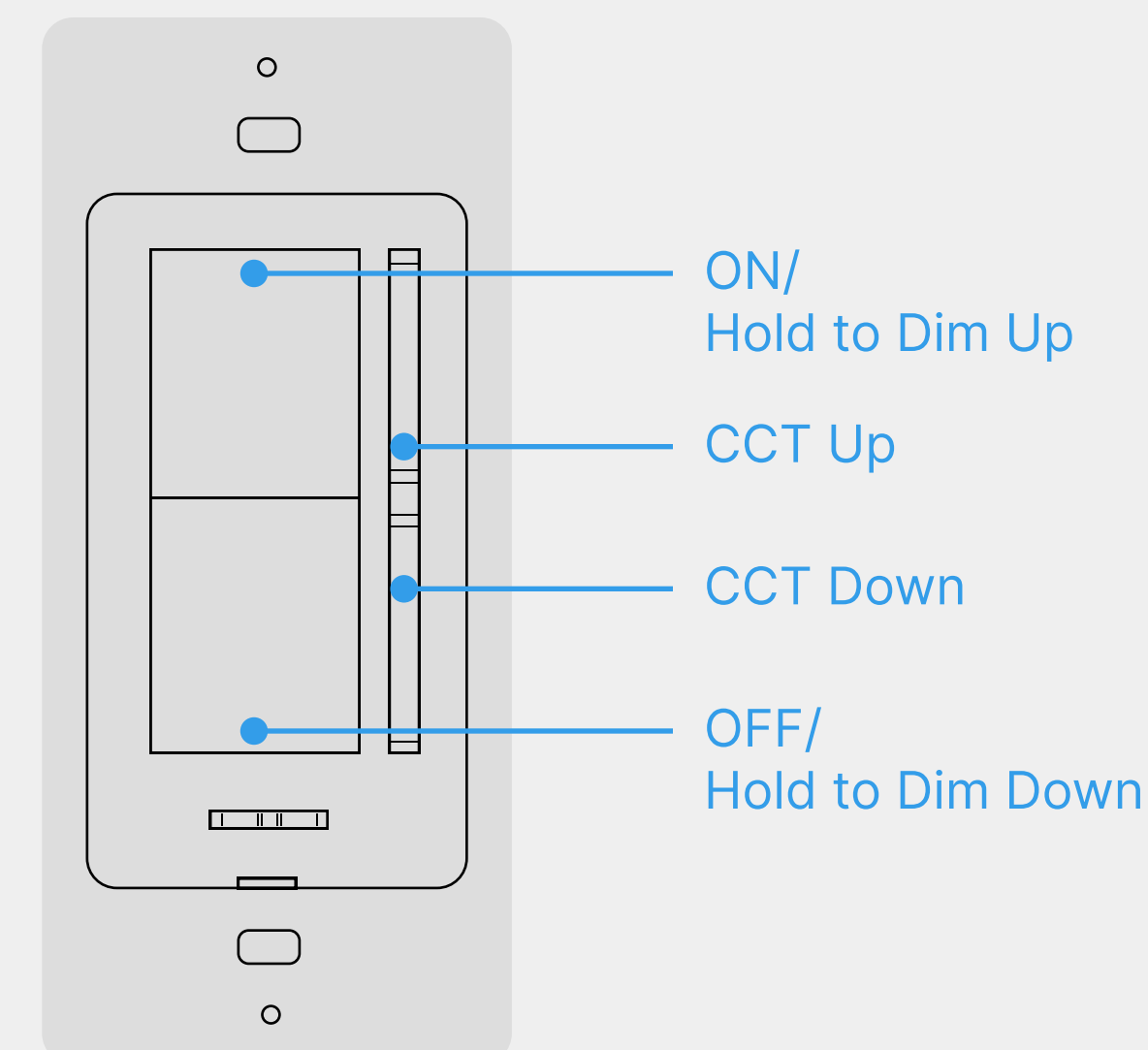


Direct & Indirect Styles



CCT Sync Switch

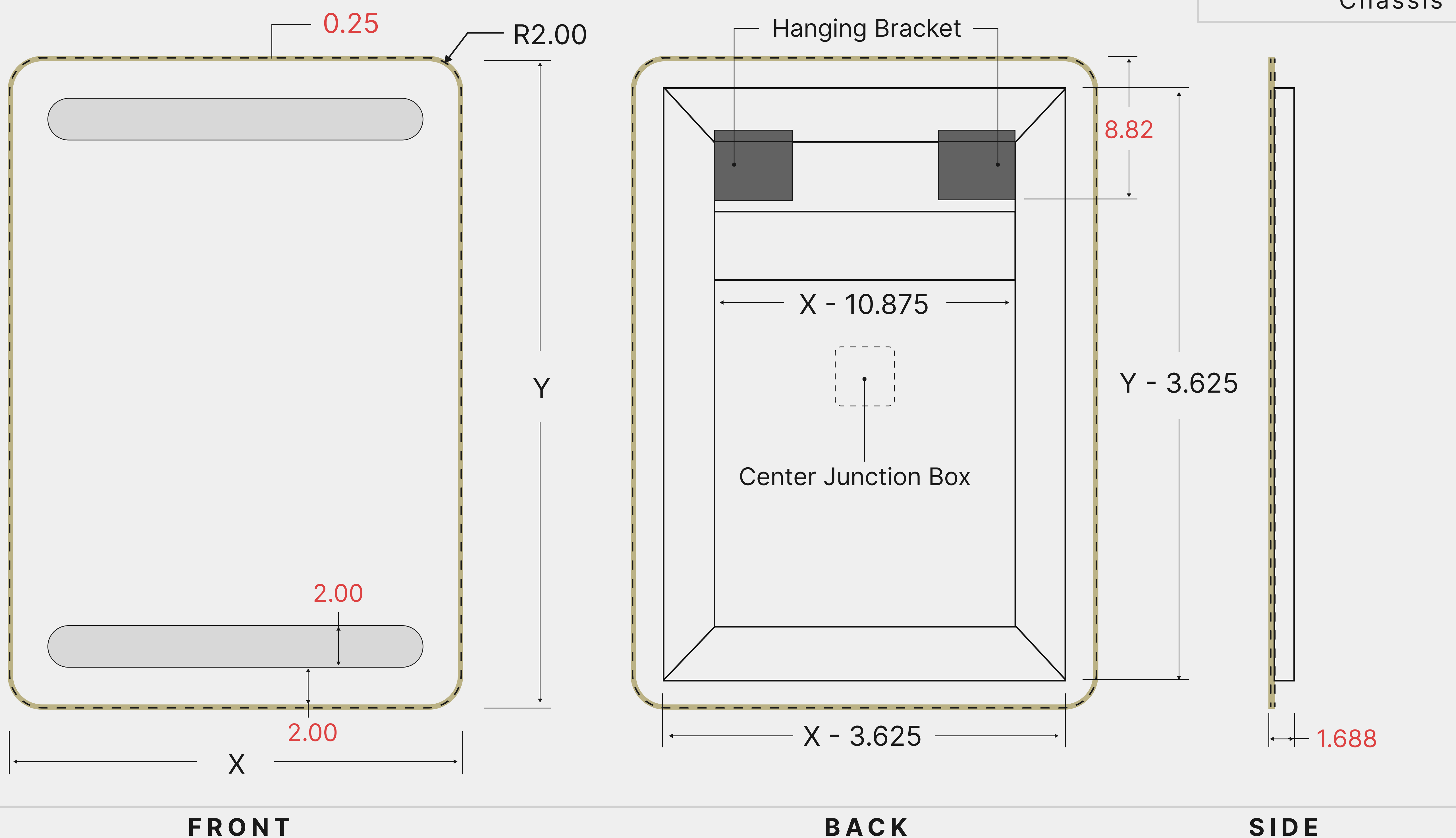
- **Independent control** of color temperature and light intensity
- Color Temperature Switchable between **1800k to 6500k**
- **Dimensions:** 1.7"W x 4.15"H x 0.2"D



STANDARD SIZE (Dimensions in red are set)

UNIT: inch

Frost: 2.00	Depth: 1.688	Glass Width: X	Frame Width: X + 0.18
Inset: 2.00	Radius: 2.00	Glass Height: Y	Frame Height: Y + 0.18



Please punch holes after the dashed line

MATRIX MIRRORS