

Please punch holes before the dashed line

# Future Deco Line R07b direct & indirect



Made in the USA



## ITEM CODE

R 0 7 b



① ② ③ ④ ⑤ ⑥ ⑦ ⑧ ⑨ ⑩

## Additional Custom Specification Notes ⑪

(specify the accurate size in additional custom specification notes)

### ① Types

- R - Future Deco Line

### ② Styles

- 07 - Double Short Side Inset Frost

### ③ Lighting Styles

- b - Direct & Indirect Light

### ④ Glass Sizes

- |                    |                    |
|--------------------|--------------------|
| • 2436 - 24" x 36" | • 3060 - 30" x 60" |
| • 2448 - 24" x 48" | • 3648 - 36" x 48" |
| • 3042 - 30" x 42" | • 3660 - 36" x 60" |
| • 3048 - 30" x 48" | • 3672 - 36" x 72" |

- 4254 - 42" x 54"
- 4284 - 42" x 84"
- Custom (Ex: 3173 - 31.4" x 72.5")  
(specify the accurate size in additional custom specification notes)

### ⑤ Outputs

- S - Standard Output  
(550 lumens/ft; 4.5 watts/ft)
- H - High Output  
(750 lumens/ft; 6 watts/ft)

Account for approximately 50% -60% light loss factor  
• 60% for direct lighting  
• 50% for indirect lighting  
Use frost size on page 2 to calculate linear footage

### ⑥ Color Temperatures

- 00 - Color Switchable 2700k-6500k (90+ CRI)  
(Only available with high output with **Touch Sensor** accessory)
- 00 - Color Switchable 1800k-6500k (90+ CRI)  
(Only available with high output with **CCT Sync** accessory)
- 27 - 2700k (90+ CRI)
- 30 - 3000k (90+ CRI)
- 35 - 3500k (90+ CRI)
- 40 - 4000k (90+ CRI)
- 50 - 5000k (90+ CRI)

### ⑦ Drivers

- V - 100-277VAC 0-10 Dimmable
- E - 100-277VAC ELV Dimmable
- N - 100-277VAC Non-Dimming  
(Mirrors with touch sensor have to use a non-dimming driver)

### ⑨ Frame Colors

- BF - Black Frame
- GF - Gold Frame
- SF - Silver Frame
- WF - White Frame
- BR - Bronze Frame
- CF - Custom Frame  
(specify color on website)

### ⑧ Mounting

- 1 - Vertical
- 2 - Horizontal

### ⑨ Accessories

- |                          |   |   |
|--------------------------|---|---|
| • NA - None              | • AT - Anti-Fog & Touch Sensor              | • CT - CCT Sync Switch                  |
| • TS - Touch Sensor      | • NT - Night Light & Touch Sensor           | • CF - CCT Sync & Anti-Fog              |
| • AF - Anti-Fog Demister | • AN - Anti Fog & Night Light               | • CN - CCT Sync & Night Light           |
| • NL - Night Light       | • AL - Anti-Fog, Night Light & Touch Sensor | • CL - CCT Sync, Anti-Fog & Night Light |

### ⑩ Additional Custom Specification Notes

- Low-Iron Glass
- Powder Coated Chassis
- Antimicrobial Powder Coat
- Custom Inset & Frost Sizes (Up to 2 inches)

Please punch holes before the dashed line

MATRIX MIRRORS



**ACCESSORY DESCRIPTIONS**

**Anti-Fog Demister** (120v power supply)

**Available Sizes**

- 8" x 30"      • 12" x 18"
- 11" x 14"     • 18" x 22"
- 13" x 14"     • 18" x 34"

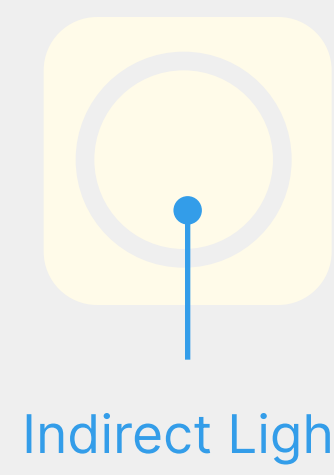
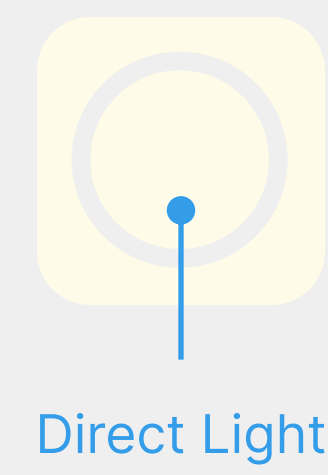
**Controllers**

**Touch Sensors**

- **On/Off Dim**
  - White when Lights ON
  - Orange when Lights OFF
  - Hold 2 seconds to turn Touch Sensor Light OFF
- Color Temperature Switchable between **2700k to 6500k**
- **Custom Logo** available

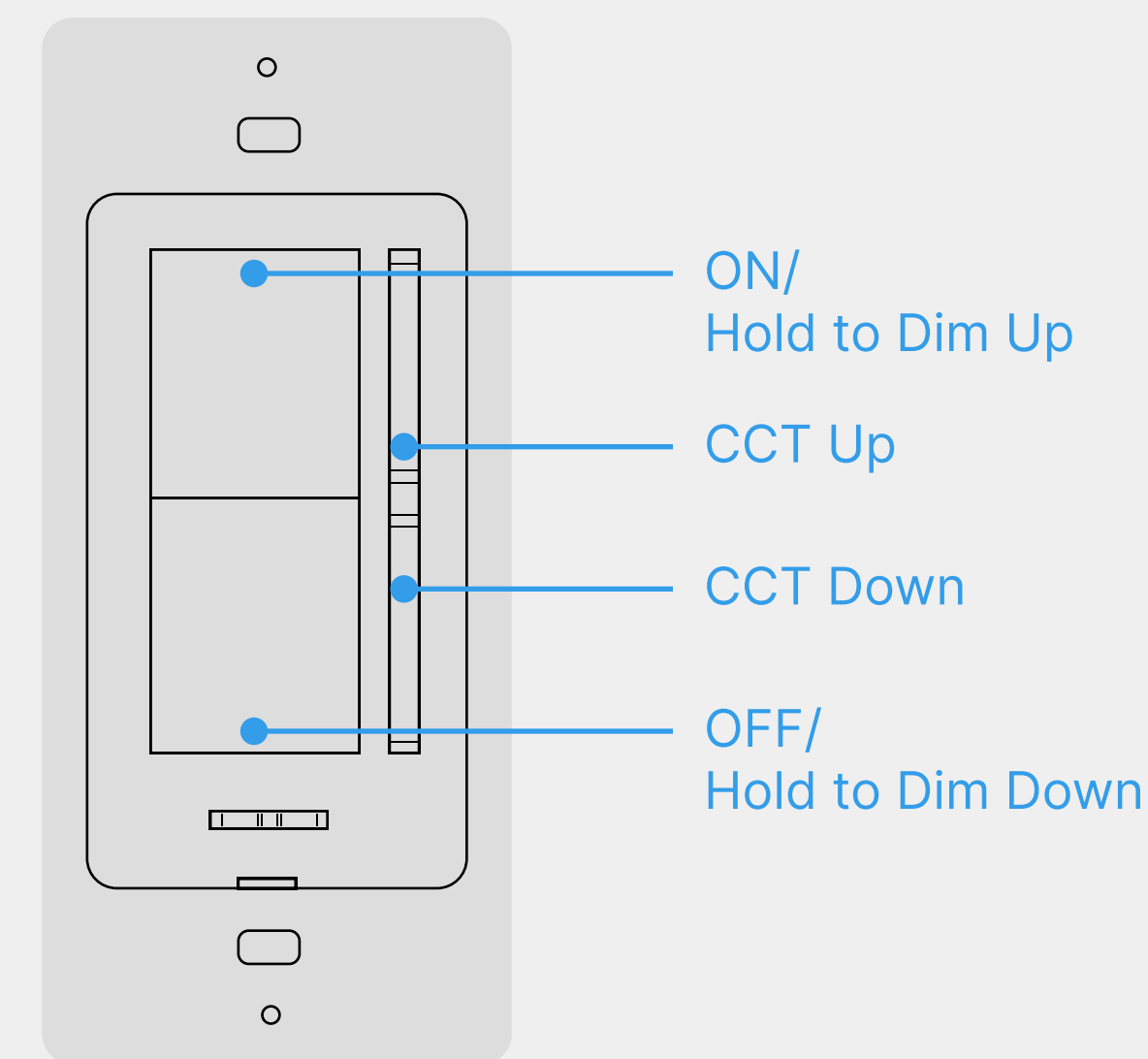
Direct/ Indirect Styles

Direct & Indirect Styles



**CCT Sync Switch**

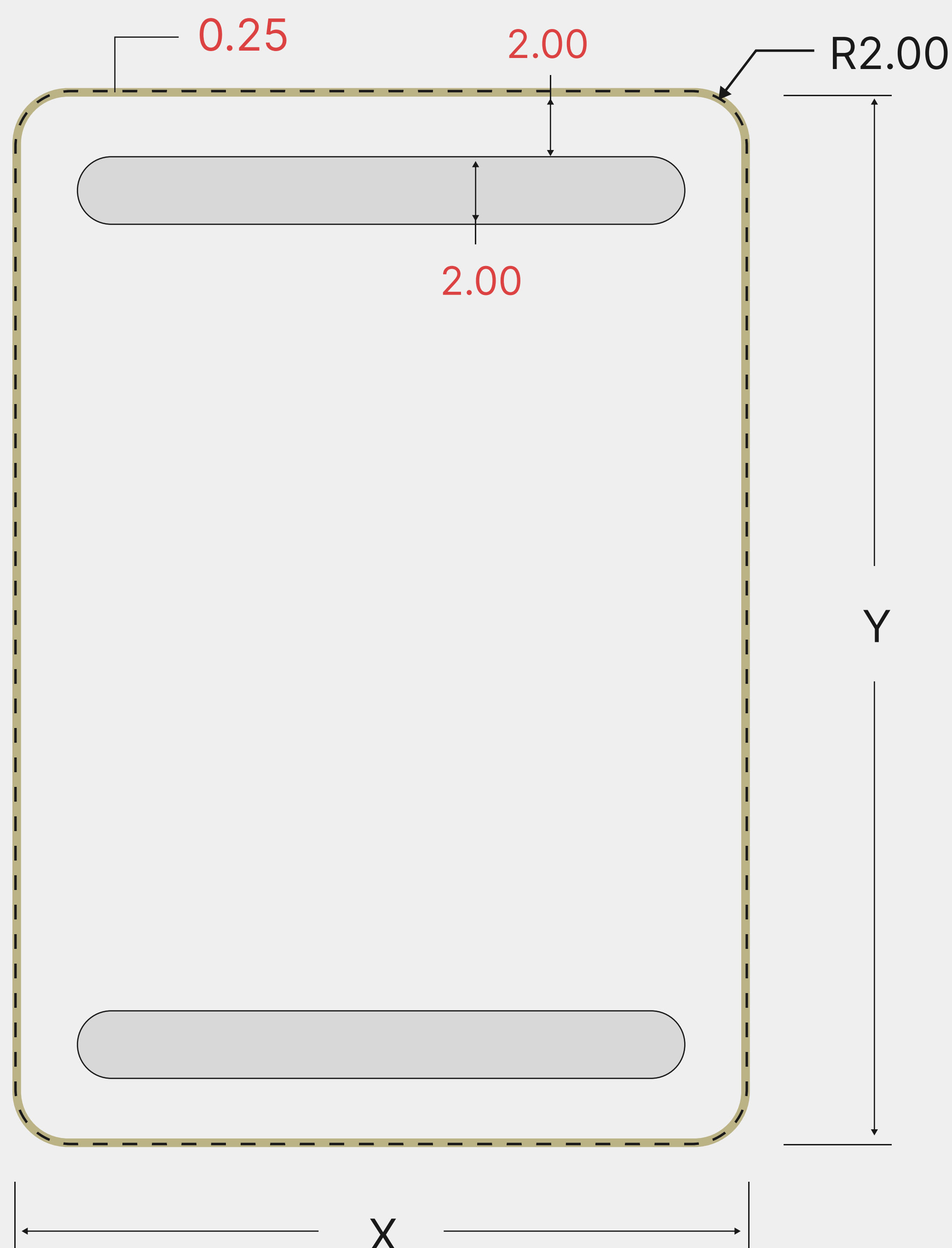
- **Independent control** of color temperature and light intensity
- Color Temperature Switchable between **1800k to 6500k**
- **Dimensions:** 1.7"W x 4.15"H x 0.2"D



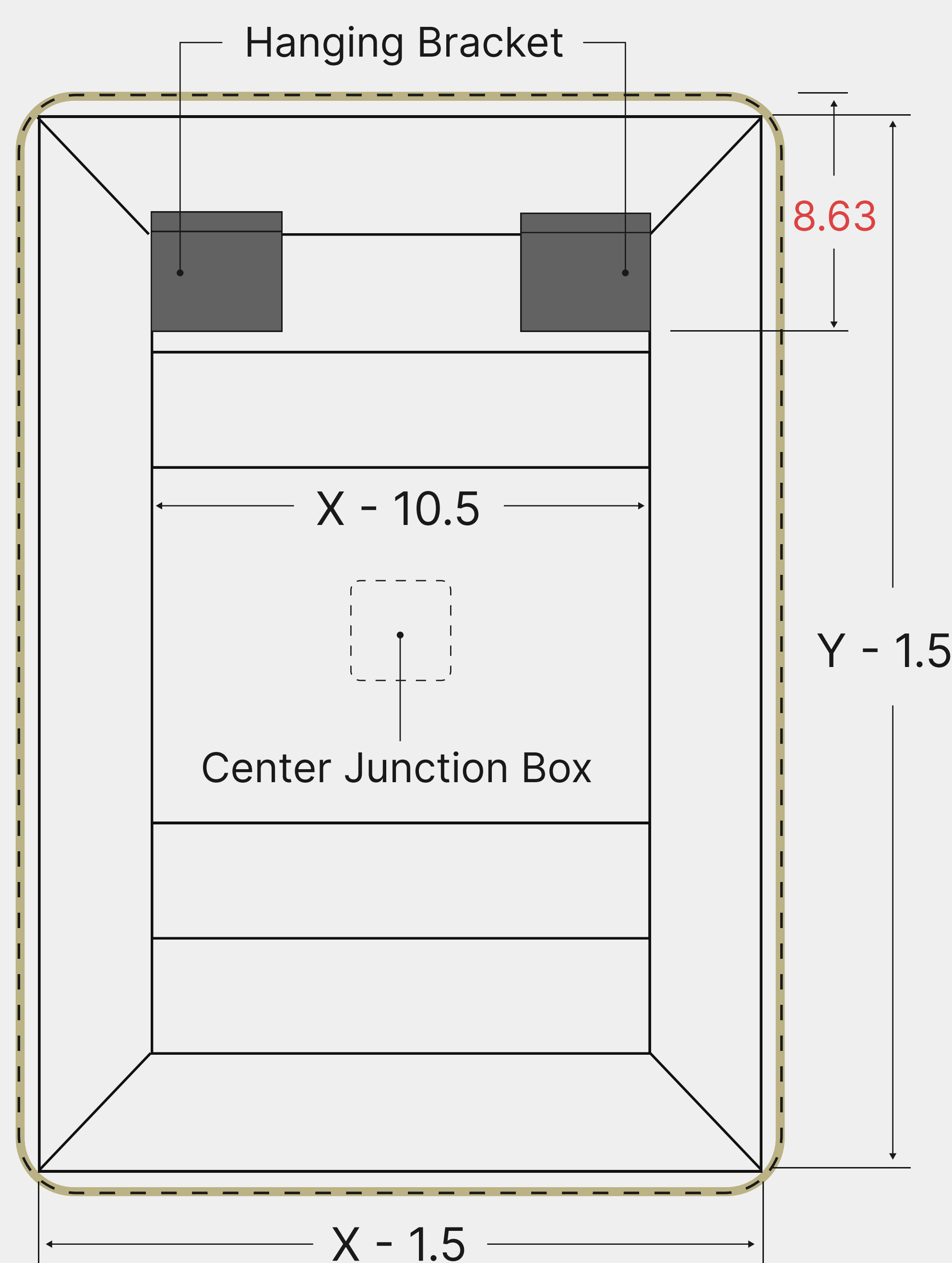
**STANDARD SIZE** (Dimensions in red are set)

**UNIT: inch**

<b>Frost:</b> 2.00	<b>Depth:</b> 1.688	<b>Glass Width:</b> X	<b>Frame Width:</b> X + 0.18
<b>Inset:</b> 2.00	<b>Radius:</b> 2.00	<b>Glass Height:</b> Y	<b>Frame Height:</b> Y + 0.18

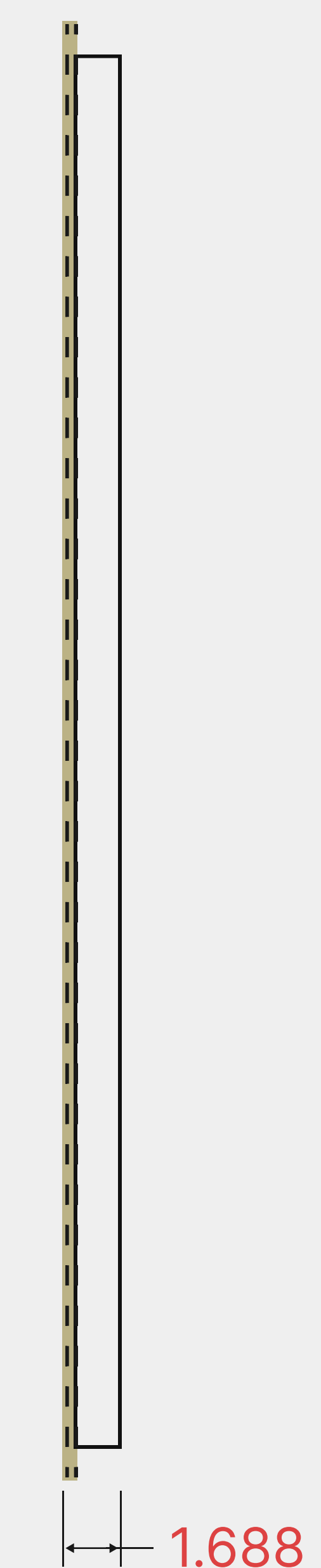


**FRONT**



**BACK**

— Frame  
- - - Glass  
— Chassis



**SIDE**

Please punch holes after the dashed line