

Welcome, you're among friends.

# Home Care Package fees and prices



five.good.friends

Home care that understands you.



## Full Service Home Care Package

	Level 1	Level 2	Level 3	Level 4
Care management fee per week	\$33.60	\$56.70	\$130.80	\$196.35
Package management fee per week	\$25.80	\$48.40	\$110.00	\$164.50
Total fees as a package percentage	28%	29%	30%	30%

## Self-managed Home Care Package

	Level 1	Level 2	Level 3	Level 4
Care management fee per week	\$5.80	\$11.55	\$23.10	\$40.40
Package management fee per week	\$25.80	\$48.40	\$110.00	\$164.50
Total fees as a package percentage	15%	16%	17%	17%

## Basic daily fee

The basic daily fee is an amount that everyone can be asked to pay. This fee is set by the government at a percentage of the single basic age pension; it varies depending on your Home Care Package level. The basic daily fee changes in March and September each year in line with the age pension. **Five Good Friends does not charge this fee.**

## Income tested care fee (ITF)

The income tested care fee is an extra contribution that some people pay, as determined through an income assessment. It is determined by Services Australia based on your individual income. People with income above certain thresholds will be asked to contribute extra, which Five Good Friends must collect.

## Five Good Friends indicative market rate per hour

Five Good Friends uses a combination of employees and verified independent contractors to deliver care and services. Five Good Friends sets a indicative market rate per hour for services, however, prices may vary based on individual circumstances. The contracted prices for services delivered by Five Good Friends are discussed with you and detailed in your budget when you become a Five Good Friends Member.

Service	Indicative market rate per hour	Saturday hourly rate	Sunday hourly rate	Public holiday hourly rate
Personal care	\$68.20	\$93.50	\$126.50	\$148.50
Nursing*	\$160	—	—	—
Cleaning & household tasks	\$68.20	\$93.50	\$126.50	\$148.50
Light gardening	\$68.20	\$93.50	\$126.50	\$148.50
In-home respite	\$68.20	\$93.50	\$126.50	\$148.50
Home administration	\$68.20	\$93.50	\$126.50	\$148.50
Companionship	\$68.20	\$93.50	\$126.50	\$148.50
Domestic support	\$68.20	\$93.50	\$126.50	\$148.50
Meal prep & grocery shopping	\$68.20	\$93.50	\$126.50	\$148.50
Medication management	\$68.20	\$93.50	\$126.50	\$148.50

*\*Does not include the cost for nursing supplies, such as bandages, dressing, continence aids.*

### 12 hour overnight block

This is overnight care that is ideal for people who need the peace of mind of on-call care through the night.

**\$385** per visit



### 24 hour high care block

This care option provides up to 10 hours of active support within a 24-hour period. This is particularly suitable for individuals who do not have family members nearby or who are unable to provide assistance with caregiving.

**\$726** per visit



### Member transport

Travel that occurs as a component of service delivery. For example, transporting a Member to an appointment or community event.

**99<sup>c</sup>** per km



### Provider travel

Travel that a Helper incurs on the way to or from delivering visits, excluding the first visit of the day. This will be charged based on the Helper hourly rate and capped at 15 minutes per visit.



## Third-party products and services

There are many other services you can access through a Home Care Package based on your ageing-related care needs. These may be provided by one of our trusted third-party partners. This can include allied health services, home maintenance, aids or equipment which may also form part of your help plan. Prices for these services may vary by provider. Five Good Friends will gain your approval for these costs and coordinate services for you.

Prices current as of 21 July 2025.

# Here, you're among friends.

We take time to understand you, shape care that fits your life, and keep the people who matter most connected and informed.

## **We build your plan together**

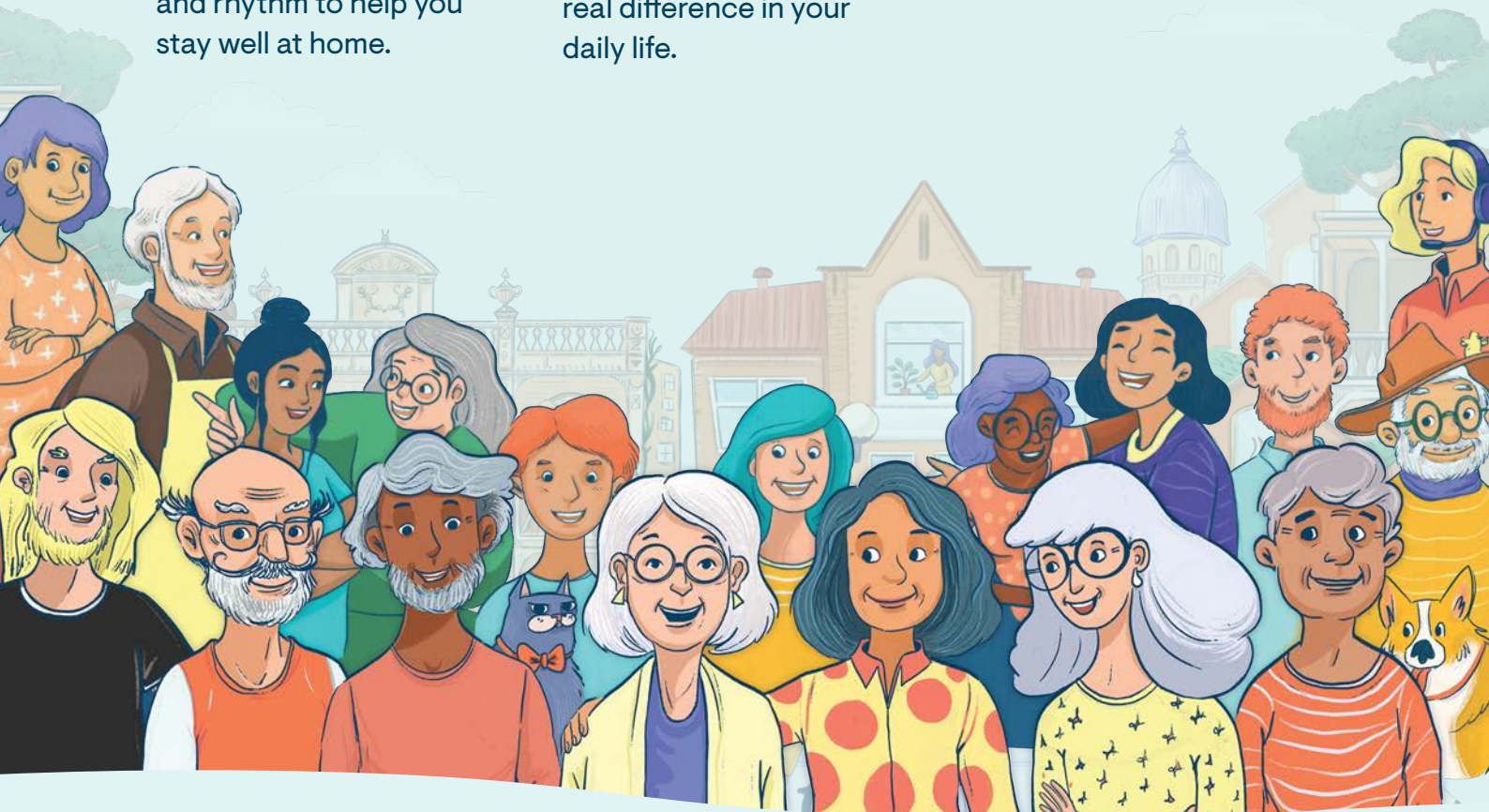
From the beginning, we take time to understand what matters to you and shape a help plan that fits your life, with the right services, support, and rhythm to help you stay well at home.

## **Support that helps you keep doing what you love**

Whether it's feeling steady on your feet, enjoying meals, or staying connected day to day, we focus on what will make a real difference in your daily life.

## **Our Family App keeps everyone in the loop**

You and your loved ones can check visit times, read updates, and stay informed, no matter where you are.



**Call 1300 787 581**

[www.fivegoodfriends.com.au](http://www.fivegoodfriends.com.au)