



**ETON**  
SOLUTIONS

Administrative  
Family Office™

# Your **virtual family** **office** powered by **AtlasFive®**

Privacy | Security | Control



# Administrative Family Office™

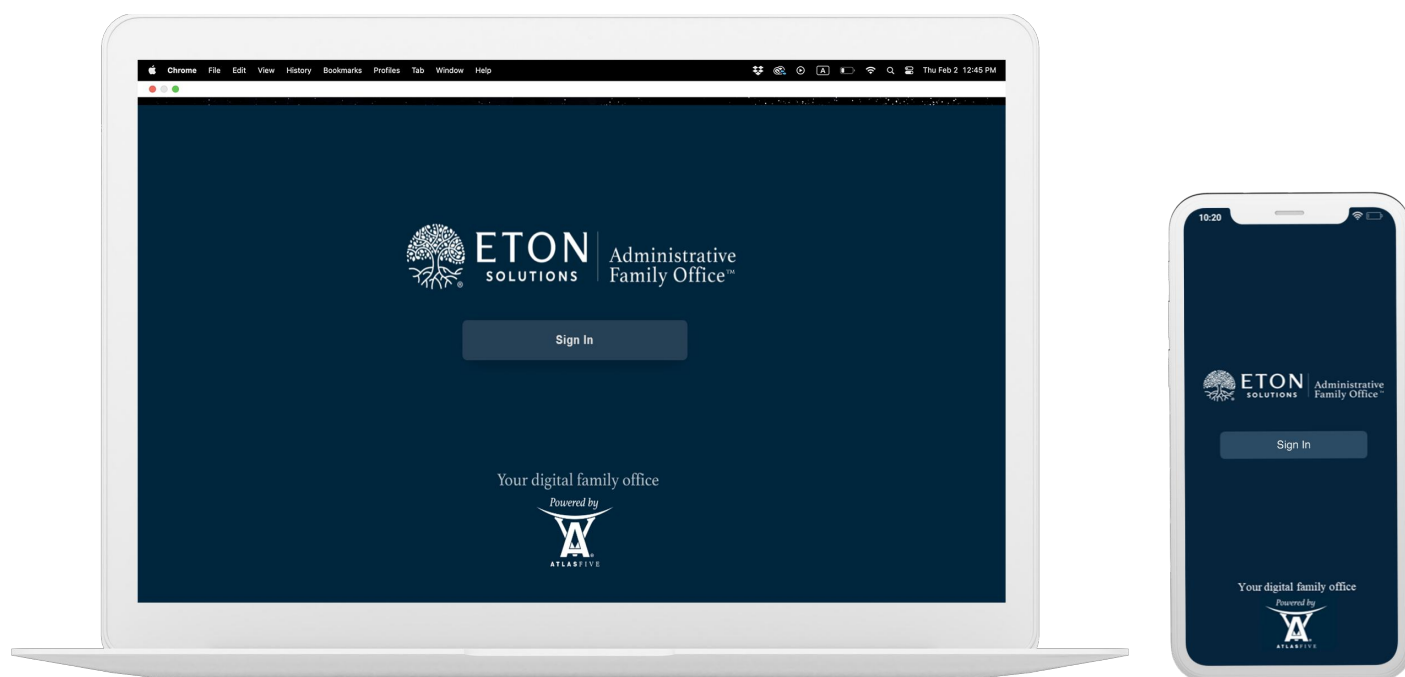
## A cloud-based family office solution

With our AFO™, a Family Office has access to:

- A secure, best-in-class platform to manage and control end-to-end operations
- A plug-and-play suite of services to augment and improve back and middle office efficiency
- Powered by AtlasFive®, trusted by America's wealthiest families

AFO™ is powered by AtlasFive® and can help you:

- Overcome the prohibitive setup costs associated with setting up a family office
- Offer the right sized solution tailored to unique needs with a choice of packages
- Accelerate decision-making with real-time insights by integrating financial data and performance/risk reporting into one unified view
- Securely manage assets, accounts, and investments with Eton's best-in-class Azure infrastructure
- Boost organizational efficiency through automation with our integrated data model



1

# Experience family-level governance

Institutionalize family objectives and comply with regulatory requirements



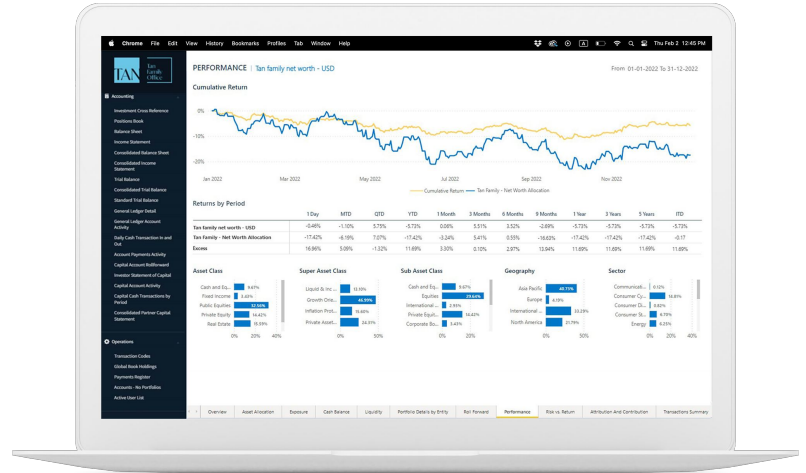
## Investment objectives

Establish family-specific investment objectives and track portfolio targets to actuals



## Tax compliance

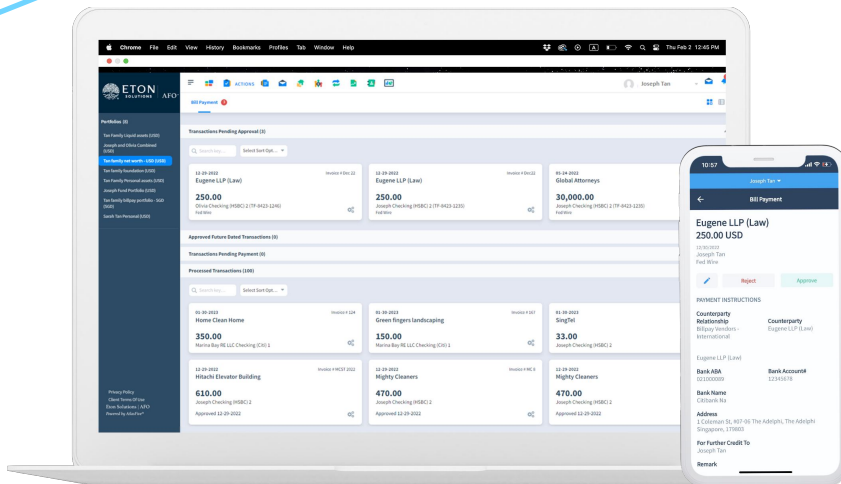
Obtain the needed information to support meeting your tax reporting needs with our tax support services



2

# Get full control at your fingertips

Initiate, authorize and manage all tasks and operations



## Secure document hub

Store and securely share private documents with third-party vendors and partners on a single platform



## User permissions and digital audit trails

Manage dynamic permissions for document types, workflow activities, data set-up, transaction approvals, and view all activities through digital audit trail



## Control on-the-go

Enforce structural controls with dynamic workflows and approve transactions from anywhere

3

# Gain total visibility and risk management

Capture family net worth for risk management and seize market opportunities



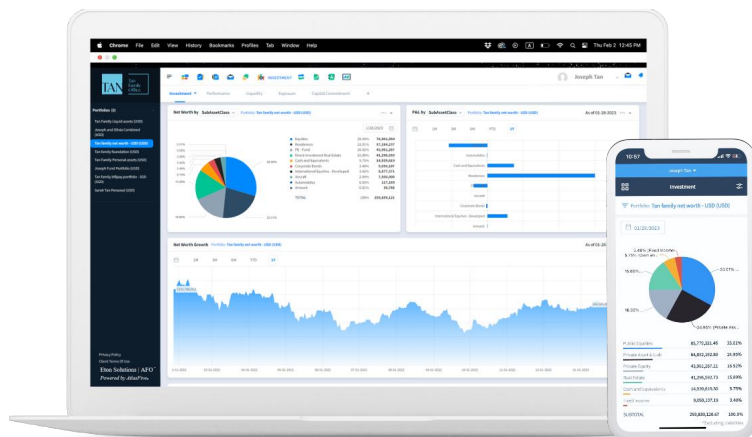
## Holistic view of your portfolio

Get a holistic view of total assets across entities with a bird's-eye view down to the granular details



## Performance management

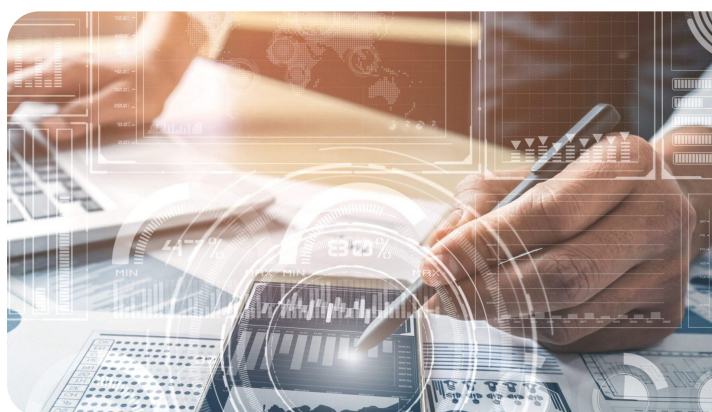
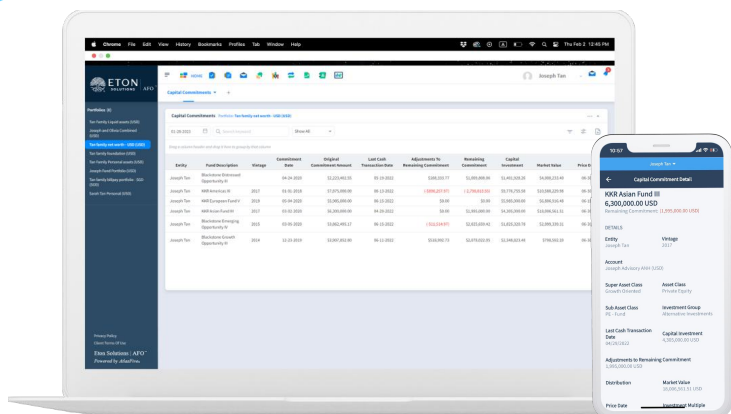
Understand portfolio performance and measure decision impact by benchmarking against industry standards and custom criteria



4

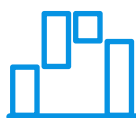
# Manage complex investments seamlessly

Simplify the entire Private Equity lifecycle



## End-to-end management of Private Equity

Simplify the PE lifecycle by initiating capital calls, authorizing payments, and updating capital commitment schedule on the platform



## Advanced cashflow analysis and reporting

Visualize historical and projected private equity cash flows for ensuring liquidity for upcoming capital calls



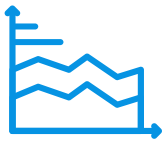
5

# Keep track of all your private assets

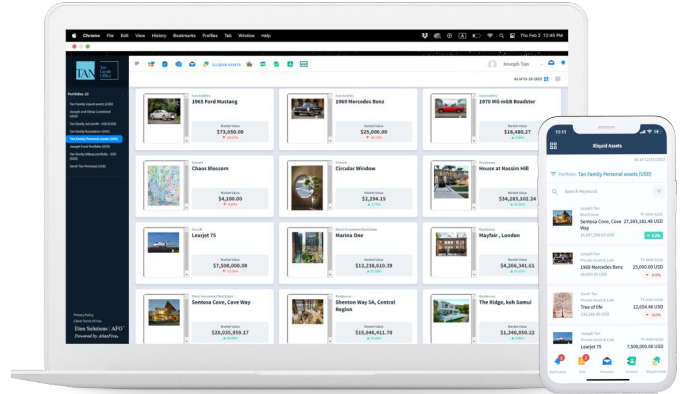
Centrally manage your private assets wherever you are



**Centrally managing all your private assets**  
View your entire collection of watches, art, real estate, wine, etc. with location tags and descriptions on the platform



**Visualisation and Reporting**  
Add your assets to your total net worth and monitor changes in the underlying asset value through dashboards and reports



6

# Have a high quality, accurate and secure data infrastructure

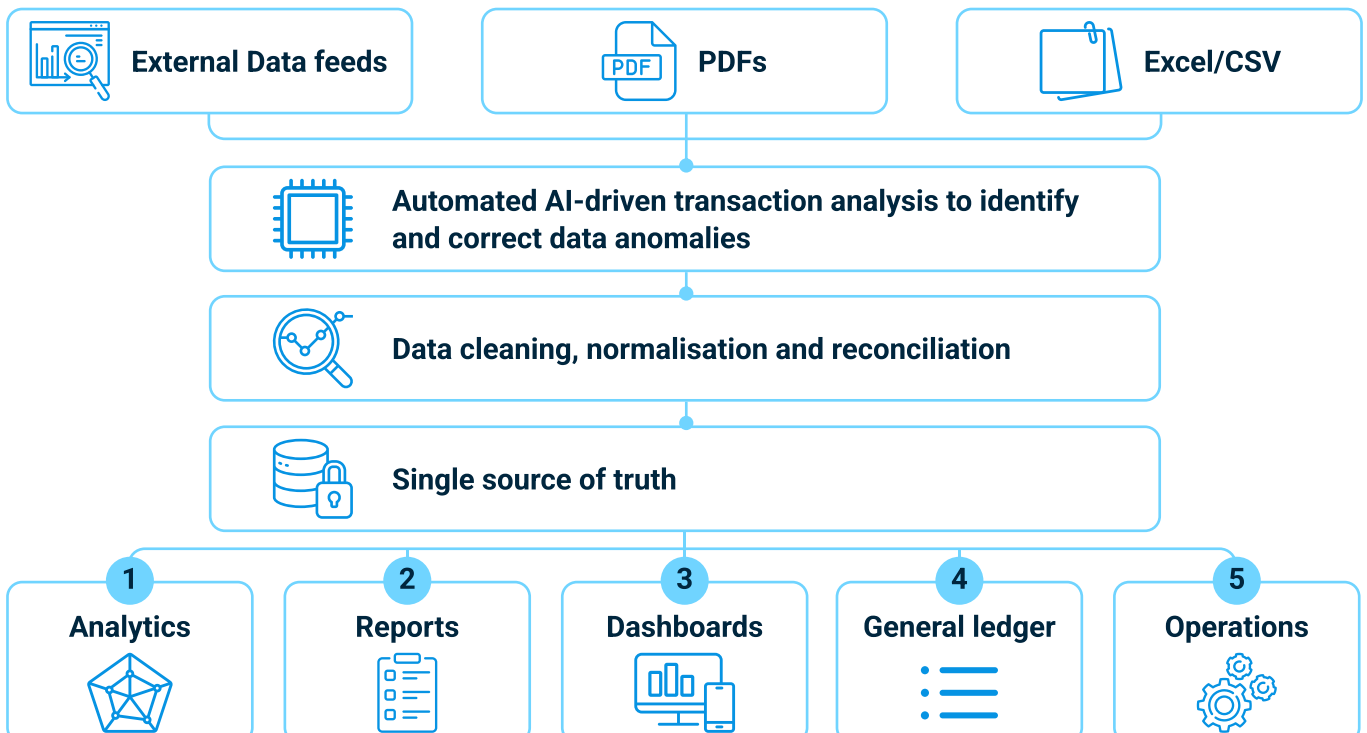
Remove manual data management efforts and simplify your data operations



**Integrated data in secure infrastructure**  
Automate data feeds across banks and custodians to unify and secure all data on one platform for all needs



**Streamline data operations**  
Automate AI-driven transaction analysis to detect and fix anomalies and inconsistencies, leaving you with accurate and clean data

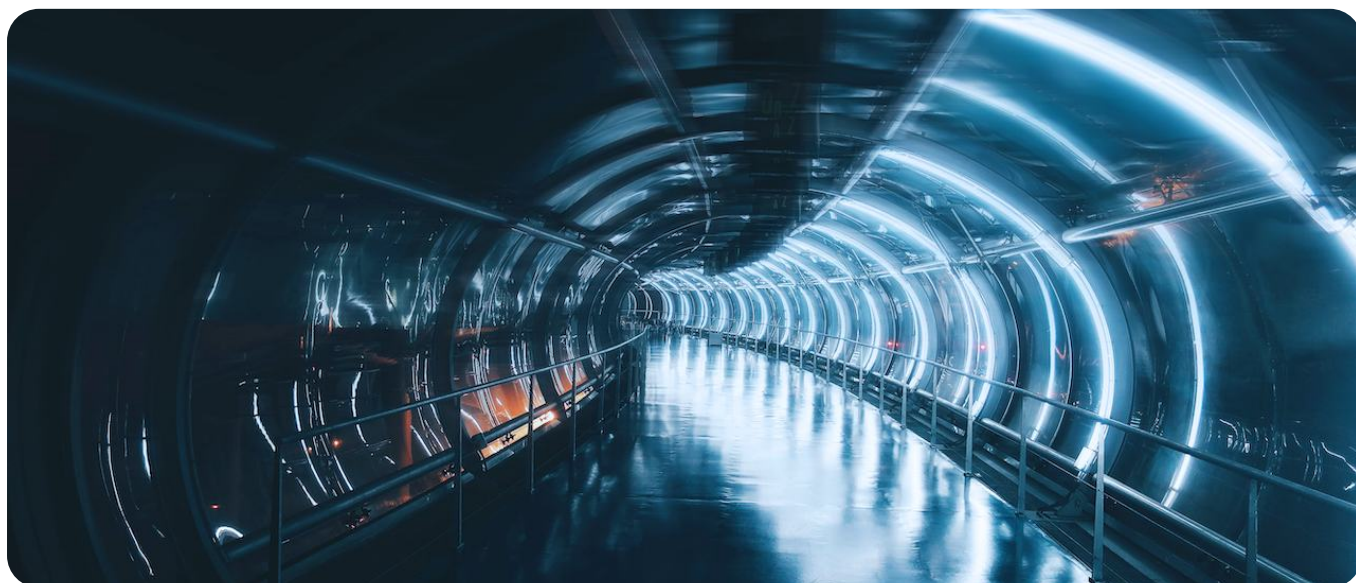


# Secure to the core

- Encrypt everything
- Verify everything
- Monitor everything

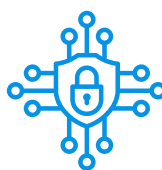
All within a secure application  
and a secure Infrastructure

We protect your data  
through world class  
**Microsoft Azure**  
security infrastructure



## Industry Certifications

Best-in class certifications and external auditors' validation (SOC2, ISO27001, ISO27701\*, GDPR\*, CCPA\*, OSPAR\*)



## Data Encryption

Fully encrypted data (in transit and at rest) with entity-level visibility stored locally or in any one of 56 Countries of your choice



## Azure Native

Leverages Microsoft's leading expertise on cybersecurity



## Security First

Security testing at every stage, from software development to deployment and beyond



## 24/7 Monitoring

24/7 Security Operations Center



## User Identity

Single Sign-on and Multi Factor Authentication using Azure Active Directory

# AFO™

## For those starting their journey, irrespective of size

One solution to start running your family office efficiently



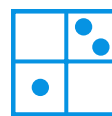
A single platform that unifies your investment, accounting, and tax



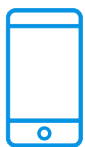
Cost savings on third-party services for accounting and tax advisory



Full control of transaction initiation, approval, and reporting at your fingertips



Dynamic dashboards for reporting, with granular access for each family member



Available on both web and app



Support services to handle all your emails and documents with no manual paperwork required

### AFO™

- Liquid and illiquid data aggregation
- Core accounting and reporting
- Transaction processing
- Dashboards and workflows
- Mobile app and virtual mailroom



# AFO™ Power For the investment savvy

Performance-driven investment reporting for growth



Portfolio reporting across dimensions (net worth, portfolio, entities, etc.)



Performance benchmarking against industry standards and other custom criteria

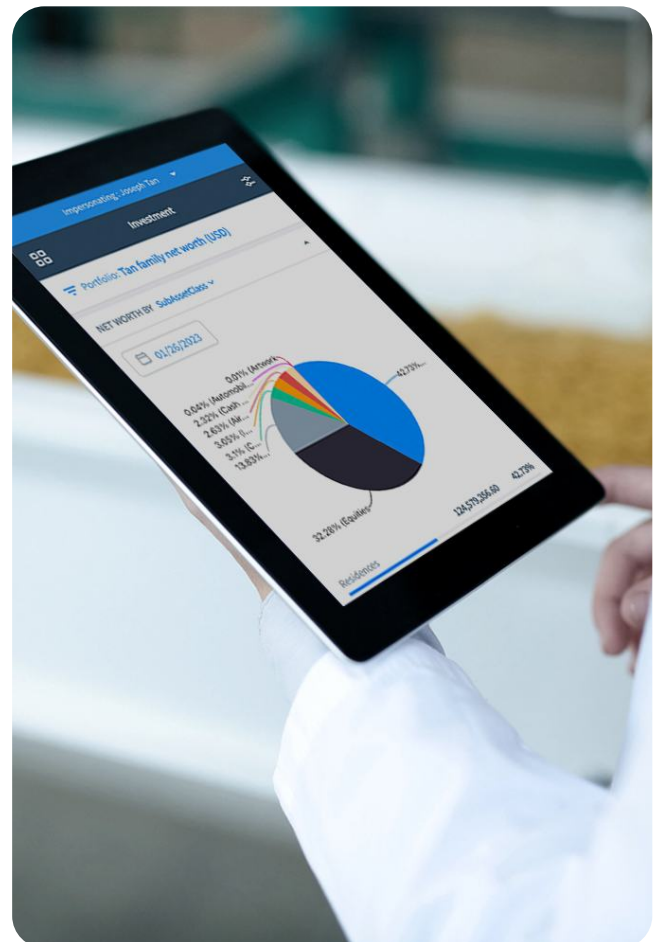


Bespoke analytics & reports to suit your specific reporting needs

## AFO™ Power

- Performance benchmarking
- Private assets tracking
- Bespoke analytics and reporting

+ All other features and services in AFO™





# AFO™ Professional

## For fully-fledged investment opportunities

Professional-grade wealth solution for complex investments



Manage capital call schedules and commitments for Private Equity investments



Initiate transactions for capital calls directly from the platform



View portfolio performance dashboards and reports on PE investments

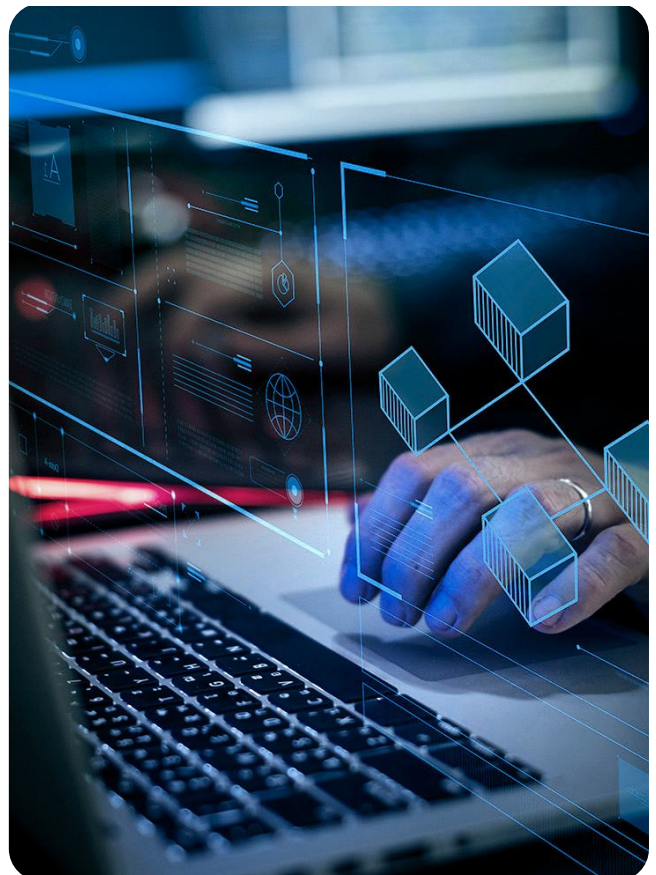


Cashflow analysis and reporting, dashboards and capital inflow and outflow reports

### AFO™ Professional

- Private Equity lifecycle
- Cashflow analysis and reporting

+ All other features and services in AFO™ and AFO™Power



# Eton Solutions®

Fit-for-purpose collaboration model

	AFO™	AFO™ Power	AFO™ Professional
	One solution to run your family office in an efficient manner	Performance-driven investment reporting for growth	Professional-grade wealth solution for complex investments
Liquid & illiquid data aggregation	✓	✓	✓
Core accounting and reporting	✓	✓	✓
Transaction processing	✓	✓	✓
Dashboards and workflows	✓	✓	✓
Mobile app	✓	✓	✓
Virtual mailroom	✓	✓	✓
Performance benchmarking	—	✓	✓
Private assets tracking	—	✓	✓
Analytics and reporting	—	✓	✓
Private Equity lifecycle	—	—	✓
Cashflow analysis & reporting	—	—	✓

## Explore our expert add-on services that cater to your unique needs



### Customized Branding

- Customized logos shown on your client portal and mobile app



### Fund & Trust Accounting

- Trust setup & maintenance
- Fund setup & implementation
- Fund allocation reports
- Trust statement of assets
- Trust activity reports



### Tax Support Services

- Consolidation of documents for tax support
- Income report and reconciliation
- Tax cost roll forward reports
- Tax analyst



### Private Loans & Others

- Loan & receivables management
- Creation and maintenance of bespoke portfolio benchmarks
- Ad-hoc customized reporting



**ETON**  
SOLUTIONS

Administrative  
Family Office™

For further queries, please contact:

**International Headquarters**

Eton Solutions International Pte. Ltd.  
8 Marina View, Asia Square Tower 1  
Level 43-01  
Singapore 018960  
[info@eton-solutions.com](mailto:info@eton-solutions.com)  
+65 64701046

Eton Solutions and Technologies India LLP  
Salarpuria Magnificia  
3rd Floor, Old Madras Road  
Dooravani Nagar  
Bangalore 560016, India

