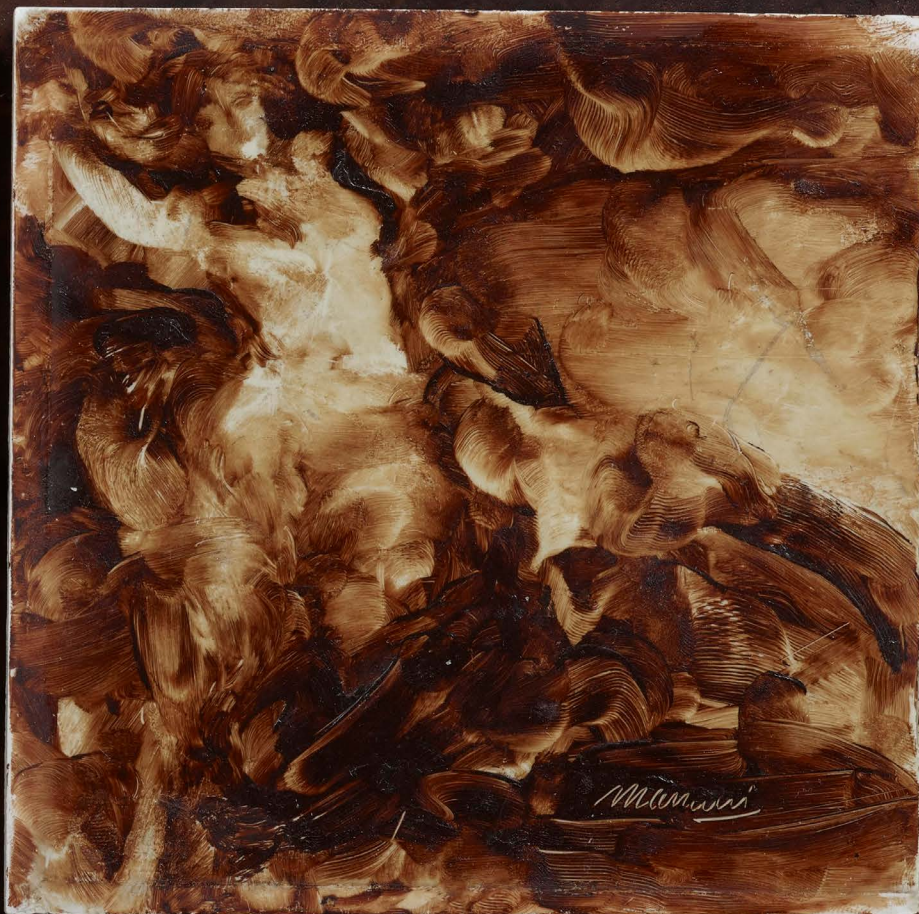




LULLO | PAMPOULIDES





LULLO | PAMPOULIDES

ANTONIO MANCINI
1852 - 1930

BACCHIC SCENE, PROBABLY AFTER TITIAN'S BACCHUS AND ARIADNE
1901-07

Oil on ceramic tile; left and right tiles, each signed lower right 'A Mancini'
14.5 x 14.5 cm each

PROVENANCE

Fondazione Metropolitan collection, Milan;
Sold Chrisite's Milan, ARTE DEL XIX SECOLO DIPINTI DISEGNI ANTICHI, 11 June 2003, lot 170;
The Irma and Sheldon Gilgore, Naples, Florida;
From whom acquired in 2025.

Antonio Mancini is best known for his bold and vibrant portraits, however, a smaller and much more intimate group of works are those painted on everyday items such as kitchen tiles or dinner plates. Almost always quickly rendered with his fingers, these delicious, almost, performative studies were given as gifts to friends or exchanged with restaurant owners for meals.

This triptych, which was most probably painted during one of Mancini's stays in London between 1901-7, is notable for the fact that it almost certainly references Titian's masterpiece of Bacchus and Ariadne in the National Gallery, London.