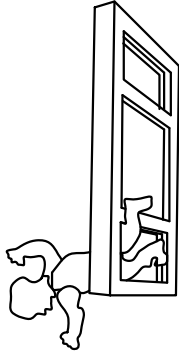


IMPORTANT SAFETY INFORMATION
PLEASE LEAVE SAFETY INFORMATION FOR THE OCCUPANT
DUAL ACTION WINDOW OPENING CONTROL DEVICE

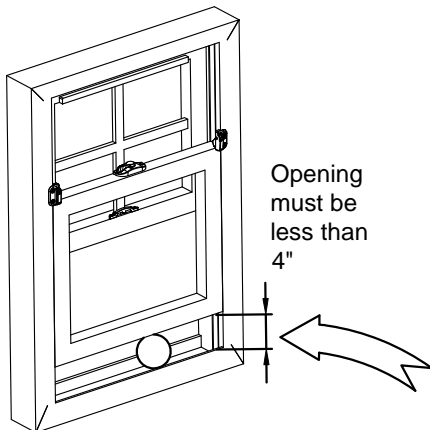


WARNING

POSSIBLE FALL HAZARD



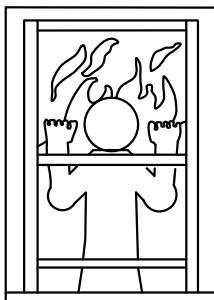
1. Follow manufacturer's assembly and installation instructions carefully. Failure to do so may result in accidental falls.
2. This WOCD is designed to protect against accidental window falls by children five years and younger.
3. This WOCD is not a substitute for careful supervision of all young children.
4. Keep WOCD engaged unless needed for an emergency.



1. Use only recommended materials & techniques.
2. Make sure WOCD is securely attached to the window.
3. Make sure the window frame is in good condition.
4. Install WOCD so that a rigid sphere 4 inches in diameter cannot pass through the lowest portion of the window opening.

NO WINDOW RESCUE ABOVE 75 FEET (6th FLOOR)

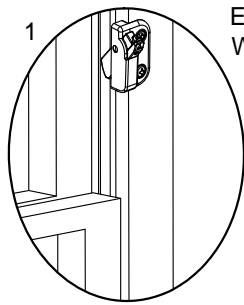
1. Fire rescue ladder may not reach beyond 75 feet (6th floor).
2. do not rely on being rescued from windows above 75 feet (6th floor)
- follow building fire escape plan



BLOCKS ESCAPE IN FIRE AND EMERGENCY UNLESS RELEASED

- 1.) Follow enclosed instructions to operate WOCD to open window.
- 2.) Never apply padlocks or devices that require a key or tool to unlock them to the WOCD.

ENGAGE WOCD

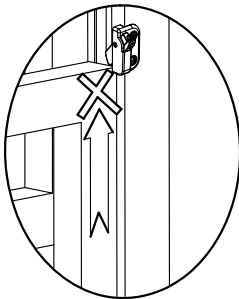


Engage
WOCD



Raise bottom
sash -
WOCD will
stop it

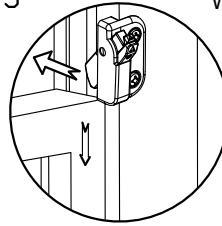
2



DISENGAGE WOCD

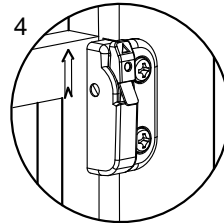
5

Lower bottom sash -
WOCD will reset



Raise
bottom
sash

4



Hold red button
down while
press the
tongue to
disengage
WOCD

3

