



DURABUILT

WINDOWS & DOORS

durabuiltwindows.com

all about you.

Important Warranty Notice

Improper installation will void all warranties expressed or implied. Ensure protective covering is properly ventilated in order to maintain a balanced temperature. Pay attention to heat absorbing plastics used to prevent construction debris and overspray, as these can be potentially damaging to the PVC.

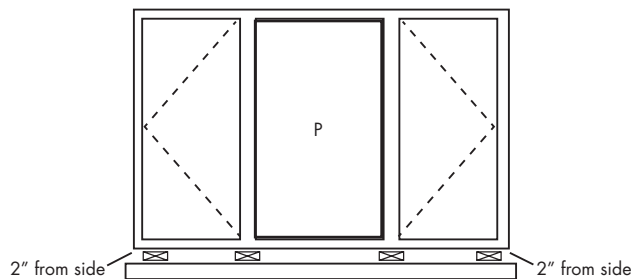
Handle with Care

- > Always lift product by jambs and provide full support underneath frame when carrying and installing. DO NOT lift windows by top framework.
- > DO NOT drop product or warranty will be void.
- > Store product at a slight lean on a flat level surface, propped against the wall; shipping blocks should be used underneath the product.
- > Allow sufficient spacing between products for ventilation and store under a protective cover.
- > If a banding strap is provided, do not cut until the window is lifted and set into the opening.

Before You Get Started –

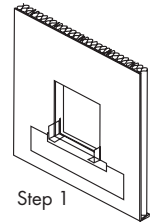
Install Window Right Side Up

- > Do not locate any nail or other fastener within 100mm (4") of any window corner.
- > Flashing over the head of the window is to be nailed above the window fin.
- > Do not damage the nailing fin when fastening head, sill and jambs.
- > Carefully set the head of the nail or fastener to avoid chipping or breakout of the nailing fin and over-clamping.
- > Be certain you install this product plumb, square, level and shimmed.
- > Shim product to support full depth of jamb at load points (every mullion) and 2" from each side.
- > Rough opening must provide ample clearance for window to be installed without forcing or racking the product. A minimum 10mm (3/8") per side is recommended.
- > Verify the rough opening has adequate clearance for insulation.
- > Do not unlock or open window until fully blocked and anchored into opening.



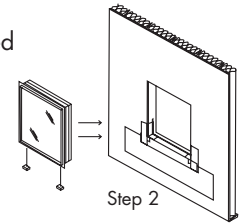
Installation Tips

Step 1: Apply primer to the wall and rough opening, after the primer has set, install membrane flashing as shown in the diagram.



Step 1

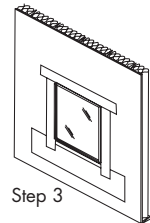
Step 2: Fold the membrane onto the exterior face, ensuring it's firmly pressed and rolled for full adhesion and work up the jambs, ensure the membrane flashing is cut to facilitate the wall openings and fold past the corners on the opening as shown in the diagram.



Step 2

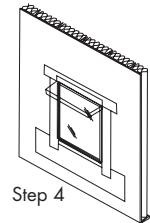
Peel the paper off the membrane flashing, place the interior edge of the membrane flush with the exterior of the rough opening; work the membrane across the sill and up the jambs as shown in the diagram. Remove shipping blocks around window and insert window in opening.

Step 3: Shim where required, apply silicon where needed, apply primer and install second membrane flashing. After primer sets, install a self-adhering membrane flashing over the head of the window, extending the membrane flashing over the head of the window and horizontally beyond the window at both jambs, a roller can be used to roll the membrane to ensure adhesion.



Step 3

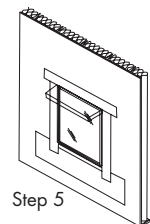
Step 4: For windows with batten finish, will have a metal flashing installed at the window head. Extend the metal flashing horizontally beyond the window at both jambs.



Step 4

(Note: The metal flashing should be installed as per building codes)

Step 5: Prime the surfaces again around the window, repeat Step 3 from installing a self adhering membrane flashing over the metal head flashing this time.



Step 5

Note: It is the responsibility of the owner, architect or builder to select products in compliance with local applicable laws and building codes. Should you experience any issue with Durabuilt products, please contact at **1.800.544.3815** or visit us at **durabuiltwindows.com**

