



Stronger together:

Community mental health

Washtenaw County Community Mental Health and Public Safety Preservation Millage

2023 MILLAGE IMPACT REPORT



2019 - 2023 Washtenaw County Community Mental Health accomplishments:



For an overview of millage priorities and accomplishments, read our one pager.



147% increase

in the number of adults served by Washtenaw County Community Mental Health from pre-millage to today.

40+ programs

supported with millage dollars at Washtenaw County Community Mental Health and partner organizations.

\$7 million

provided to community partners for mental health programs over the last five years.



INTRODUCTION

Five years of mental health millage investments.

In 2017, the Community Mental Health and Public Safety Preservation Millage was approved by Washtenaw County voters by a 2-1 margin. Since January of 2019, when the funds were first made available, the millage has provided essential resources to address crucial community needs like extending behavioral health care to all residents, expanding crisis services, providing supportive housing, and more.

The millage brings approximately \$5 to \$7 million per year to fund various programs at Washtenaw County Community Mental Health (WCCMH) and community organizations that provide mental health and substance use treatment services.

Since the advent of the millage, the need for mental health services has increased substantially. For example, in 2018, just before millage funds were available, WCCMH answered 4,500 calls per month on average. In 2023, that number increased to 8,500 calls per month on average.

Our 2023 annual impact report highlights a variety of millage investments and the impact they've had on our community across five categories:

Behavioral health service expansion	\$3,801,144
Youth support services	\$947,771
Supportive housing	\$794,508
Prevention and education	\$513,525
Criminal justice reform	\$489,411

We're proud that the majority of these millage dollars directly benefit the community. Less than 10% of funds are allocated to administrative costs.





2023 Impact

PG 6

Service expansion

- Washtenaw County Community Mental Health's CARES team served 2.4 times more individuals than before millage funds were available.
- The county's new 24/7 substance use call line received about 250 calls per month.
- The Washtenaw County Community Mental Health crisis team responded to 2,628 calls in person.

PG 17

Prevention & education

- Washtenaw County's chapter of the National Alliance on Mental Illness served more than 800 individuals.
- The health department's #WishYouKnew campaign reached more than 3,000 youth.
- 16 mini grants awarded to area schools for student-led mental health initiatives.

PG 9

Youth support

- Over 2,200 youth and young adults were served by Washtenaw County Community Mental Health.
- Over 750 hours of youth psychiatry services provided at the Corner Health Center in Ypsilanti.
- Over 10 programs at Washtenaw Intermediate School District support thousands of students and families.

PG 22

Criminal justice

- 540 calls to 911 from Ypsilanti Township were assigned to a co-response team staffed by a deputy and mental health specialist.
- LEADD, Washtenaw's Law Enforcement Assisted Diversion and Deflection program, provided intensive case management to 22 clients in 2023.
- 19 responses by the Crisis Negotiation Team, which includes mental health specialists, to deescalate conflicts.

PG 13

Supportive housing

- Washtenaw County Community Mental Health placed 258 individuals in temporary emergency housing.
- Millage-funded housing agencies like Avalon and Michigan Ability Partners placed over 50 individuals in permanent supportive housing.
- Over 800 individuals received supportive services, like therapy and case management, at millage-funded housing agencies.

PG 26

Partnerships

PG 31

By the numbers



Service Expansion

By leveraging millage funds, Washtenaw County Community Mental Health has expanded access for individuals with no insurance, public insurance, or private insurance; expanded care to individuals with mild to moderate mental health needs; and expanded crisis services to include face-to-face services.



How is the millage supporting care across the county?

Washtenaw County Community Mental Health extends its services to residents across the county, encompassing both vulnerable rural communities and densely populated urban areas, ensuring equitable access to resources regardless of geographical location or socioeconomic background.



ANSWER:

The CARES team provides 24/7 services to everyone

Funded by the millage and Washtenaw's Certified Community Behavioral Health Clinic, this specialized team helps everyone, 24/7, regardless of insurance status or ability to pay. Services include answering questions about mental health and substance use concerns, screening for needs, providing referrals, therapeutic care, and more.

2.4 times more individuals were served in 2023 compared to the year before millage funds were available.

ANSWER:

Telehealth and co-located providers are convenient ways to access help

Through telehealth and millage-funded therapists co-located at organizations across the county, Washtenaw County Community Mental Health can serve individuals in urban and rural locations—even those with limited transportation. During COVID, WCCMH pivoted to telehealth, which continues to be a convenient way to access help.

Half of the individuals served live in Ypsilanti; nearly 20% live in rural communities.

ANSWER:

The expanded crisis team supports more residents

Fourteen full-time, crisis team positions are funded by the millage. Millage funding allows the team to provide more in-person and telehealth crisis services because they can offset service costs not reimbursed by insurers. In 2023, the crisis team spent nearly 7,000 hours providing care to individuals in need across the county.

76% of the crisis team's cases were assigned a clinician for follow up care.*

ANSWER:

Washtenaw Health Project supports those with language, insurance barriers

With millage funds, this non-profit organization provides referrals to therapeutic services and mental health resources to help increase accessibility, particularly for those who face language and insurance barriers. In 2023, the Washtenaw Health Project received an additional \$165,000 commitment from the Millage Advisory Committee.

61 people had 610 mental health counseling sessions through the Washtenaw Health Project.

*This data is from WCCMH's FY 2023 (October 1, 2022 - September 30, 2023)

How is the millage improving access to substance use treatment and recovery?

Thanks to the millage, residents can now call 734-544-3050 to access same day screening, treatment authorization, referral to community-based treatment providers, and more.

ANSWER:

Single point of access for substance use disorder concerns

On January 1, 2022, Washtenaw County Community Mental Health's millage-funded 24/7 call center became the primary access point for all substance use treatment needs. The team uses a universal screening tool to assess need for therapeutic services. Residents can now call 734-544-3050 to receive various forms of substance use support.

1,965 total substance use disorder assessments.*

ANSWER:

Substance use treatment referrals to community providers

Washtenaw County Community Mental Health referrals to substance use community-based providers give individuals more choice than previously. The past system assigned individuals to one of two providers based on their birth date. Now, WCCMH provides individualized referrals based on the needs and preferences of the caller.

256 referrals to 13 local providers. *

*This data uses WCCMH's Fiscal Year (October 1, 2022 - September 30, 2023)



A suicide hotline is great, but coming to your house is better. We can see your home environment to learn more about your situation. And we can drive you to the hospital and walk you through check-in, which is scary to do alone, especially when you're upset. We're in-person support for people having the worst day of their lives"

— Emily Scheitz, crisis team member.

Youth Supports

National and local data show that youth mental illness, suicide, and loneliness are at all-time highs. Because of this, millage leaders have made youth support a significant investment priority, funding programs that expand access to youth mental health services at Washtenaw County Community Mental Health and other local providers.



How is the millage supporting kids and young adults?

Millage funds are used to expand youth psychological and psychiatric services at Washtenaw County Community Mental Health and partner organizations. Millage dollars are also used to fund youth programming across the county.



ANSWER:

Support for Washtenaw youth and families

The youth and family services team at WCCMH provides behavioral health and case management support to youth and their families. A millage-funded case manager coordinates community-based services for youth and their families.

Millage-funded case manager served 32 youth.

ANSWER:

Student Advocacy Center programs

Check & Connect and Education Advocacy provide mentorship, support, and advocacy for students at Ypsilanti and Lincoln schools—many with behavioral health concerns. The goal: to interrupt the school to prison pipeline.

164 students served through two millage-funded programs.

ANSWER:

Washtenaw Community Mental Health

Prior to the millage, many youth couldn't access community mental health services due to lack of Medicaid insurance or not meeting state criteria. Since millage funds became available, WCCMH has served 104% more youth.

2,248 youth and young adults served by WCCMH's CARES team.*

ANSWER:

The Corner Health Center in Ypsilanti

The Corner Health Center in Ypsilanti has millage-funded psychiatric staff provide assessments, medication reviews, and other services to help youth manage their symptoms and improve their well-being.

Over 750 hours of psychiatric appointments.

ANSWER:

Miles Jeffrey Roberts Foundation

This millage-funded pilot is designed to empower youth athletic communities to promote mental well-being and prevent suicide in Skyline High School. Over 10 coaches provide resources and support to students.

207 student athletes attended mental health presentations.

*This data uses WCCMH's Fiscal Year (October 1, 2022 – September 30, 2023)

How is the millage supporting public schools?

For five years, Washtenaw County Community Mental Health has partnered with the Washtenaw Intermediate School District. With millage funds, this partnership provides school-based behavioral health support, allowing trained professionals to meet kids where they're at.



ANSWER:

Washtenaw Intermediate School District

In 2023, millage funding supported various programs, such as case management and assessment services benefiting over 800 children, Mom Power sessions for mothers, and trauma training sessions for school staff.

10+ programs in operation for WISD students and families.

ANSWER:

Public school-based social workers

Millage-funded social workers are embedded in multiple public schools to provide school-based mental health care and referrals to community-based providers for regular education students—an underserved population.

1,538 hours of service by millage funded social workers.

ANSWER:

Mental health programming mini grants

Millage-funded mini grants allow students at 16 Washtenaw County high schools and middle schools to design mental health programming for their peers. The aim: To destigmatize mental illness and promote well-being.

7,500+ students participated in mini grant programs.



At first when I didn't have Check & Connect my grades and my attendance had fallen. Then I met my mentor and my grades and my attendance increased. It was significant for me because I want to go to college but college won't accept you if you have bad grades and attendance. [The program helped] by working with me to help me get to and from school, to do my homework, and checking in on me weekly."

— Check & Connect participant

How is the millage supporting youth in underserved communities?

The millage supports programs in Ypsilanti, Western Washtenaw County, Milan, and other disadvantaged regions to promote equity. For instance, nearly half of individuals aged 29 and under served by WCCMH live in Ypsilanti's 48197 and 48198 zip codes.



ANSWER:

Ypsilanti Housing Commission Family Empowerment Program

Ypsilanti Housing Commission's Family Empowerment Program supports youth and families living in complexes across the county owned by the commission with employment, education, and health and wellness programs. Millage funds support two staff members at the commission who provide case management and programming.

Case management services were provided to all 86 individuals and families at New Parkridge.

ANSWER:

Community. Leadership. Revolution. (CLR) Academy

A free, weekly pop-up program supporting young kids in underserved neighborhoods' right to dream, believe, explore, and create through sport, nutrition, reading, and writing. Community. Leadership. Revolution. Academy operates at four sites across the county including South Pointe Scholars, New Parkridge, Carrot Way, and Pauline.

Over 300 youth participated at four sites across the county.

ANSWER:

Student Advocacy Center Check and Connect Program

The Student Advocacy Center's Check and Connect Program is an evidence-based intervention that serves students attending Ypsilanti-area schools. Student Advocacy Center staff provide weekly school progress checks, personalized interventions, and frequent communication with schools and parents, guardians, and caretakers.

In the 2023 school year, this program supported 75 students.

ANSWER:

Washtenaw Health Project empowers and supports Latinx teens

The Washtenaw Health Project helps facilitate a six-week bilingual Latinx teen empowerment group during the summer at Ypsilanti High School. The program is facilitated by Spanish speaking social workers in partnership with Beunos Vecinos, Mexiquenses, University of Michigan School of Social Work, and Amplify Colectivo.

13 teens participated in social and emotional skill building sessions.

Supportive Housing

Millage leaders recognize housing as an integral component of behavioral health. Because of this, the millage advisory committee committed funding to Avalon Housing, Michigan Ability Partners, Ozone House, the Shelter Association of Washtenaw County, and the Ypsilanti Housing Commission.



How is the millage responding to homelessness through supportive services?

Houseless individuals often require supportive services in addition to housing to address underlying issues such as mental health challenges, substance abuse, or lack of job skills, which can hinder their ability to maintain stable housing. The millage is proud to fund supportive services alongside housing to ensure a holistic approach to addressing homelessness, empowering individuals to overcome barriers and thrive in their newfound stability.



ANSWER:

Avalon Housing provides supportive services

Avalon Housing offers supportive services to residents including care coordination, medication management, and more. The millage funded the work of three team leaders and 14 adult and family support coordinators.

634 individuals received supportive services.

ANSWER:

Michigan Ability Partners' personalized services

The millage funds personalized support services at Michigan Ability Partners. These include support securing housing, therapeutic check-ins, and assistance with various needs such as job applications and transportation.

24/7 wraparound support for clients.

ANSWER:

Ozone House provides youth support

Ozone House provides supportive services for individuals aged 18 - 24, including screenings, case management, life skills training, therapy, financial assistance, and support for individuals in their Transitional Living Program.

Case management provided to 119 youth and young adults.

ANSWER:

The Shelter Association of Washtenaw County

Through a partnership with Washtenaw County Community Mental Health, the Shelter Association of Washtenaw County is able to provide mental health services in-house and also make referrals to community services.

78% of clients met some or all of their mental health goals.

ANSWER:

Ypsilanti Housing Commission

Two staff members provide enhanced supportive services at YHC, which provides resource navigation and community building in order to foster self sufficiency and enhance quality of life for New Parkridge residents.

Case management for all 86 individuals and families.

How is the millage responding to homelessness through short-term housing?

Short-term housing offers a crucial stepping stone for individuals experiencing homelessness, providing them with immediate shelter and stability while they work towards long-term solutions.



ANSWER:

Ypsilanti Housing Commission

Individuals were provided temporary, supportive housing at three Ypsilanti Housing Commission properties—Deborah Strong Housing, Hamilton Crossing, and New Parkridge communities—through millage-funded housing vouchers.

13 individuals placed in temporary housing.

ANSWER:

The Shelter Association of Washtenaw County

Washtenaw County Community Mental Health can refer individuals with mental health diagnoses to the Shelter Association of Washtenaw County's Housing Crisis Stabilization (HCS) Program for immediate shelter and stabilization.

19 individuals placed in the housing crisis stabilization program.

ANSWER:

Emergency housing: Hoteling the homeless

The millage helps address homelessness by providing emergency hoteling for individuals in need. Washtenaw County Community Mental Health staff then work to connect these individuals to permanent housing solutions.

258 individuals placed in hotels in 2023.



How is the millage responding to homelessness with the housing first model?

Housing First is an evidence-based approach that provides homeless people with immediate access to housing without any requirements such as sobriety or employment. Once individuals are in stable housing, then support teams can work with individuals on treatment plans and employment applications.



ANSWER:

Avalon Housing's countywide properties

Millage funding supports Avalon Housing staff that manage affordable housing placements and provide medical and social services to recipients of housing. As a result, 94% of individuals retained their housing.

47 individuals placed in permanent housing.

ANSWER:

Michigan Ability Partners vouchers

The millage supports two permanent housing voucher programs at Michigan Ability Partners—Sponsor-Based Rental Assistance and Tenant-Based Rental Assistance. These vouchers help chronically houseless people secure housing.

6 individuals placed in permanent housing.

ANSWER:

Ypsilanti Housing Commission neighborhood

New Parkridge is a public housing neighborhood in Ypsilanti with sidewalks, playgrounds, a community garden, and more. The millage supports housing and programming at New Parkridge for individuals, children, and families.

3 individuals placed in permanent housing at New Parkridge.



"It's been a life saver for me to live there. I had a chance to start my life over and accomplish some of my goals because of the support I was given and my mental health has improved. Now I'm in recovery for my addiction."

— Avalon Housing client

Prevention & Education

Millage-funded prevention and education programs aim to destigmatize mental illness, encourage help-seeking behavior, and give community members the skills needed to respond to mental health incidences.



How is the millage addressing mental health stigma?

The millage funds programs that address mental health stigma among youth to foster a supportive environment where they feel comfortable seeking help and expressing their emotions. This empowerment encourages early intervention, leading to improved emotional well-being and resilience in young individuals.



ANSWER:

National Alliance on Mental Illness

NAMI-Washtenaw County staff use millage funds to reduce mental health stigma, host support groups, and provide resources. NAMI also developed and distributed an exceptional mental health resource guide, “Taking Care.”

25+ mental health events reaching 800+ individuals.

ANSWER:

Health Department’s #WishYouKnew

The health department’s millage-funded #WishYouKnew campaign features community voices that share messages of hope. It aims to reduce stigma and spark honest conversations about mental health between youth and adults.

12 community events reaching 1,000+ individuals.

ANSWER:

Washtenaw school district mini grants

This millage-funded initiative supports student-led mental health programming at public middle and high schools. Campaigns foster communication about mental health between students and the trusted adults in their lives.

16 programs addressing mental health stigma.

How is the millage preventing unnecessary emergency department admissions?

The team at Washtenaw County Community Mental Health works to address and resolve mental health crises with community-based support whenever possible. This reduces unnecessary disruptions to people's lives.



ANSWER:

Washtenaw County Community Mental Health mobile crisis team

When an individual in crisis calls 734-544-3050, the millage-supported crisis team is able to meet them where they're at thanks to expanded face-to-face services, a service that would not be possible without millage dollars. An evaluation of the mobile crisis team demonstrated that 75%* of crisis team contacts were resolved informally or taken to community treatment, rather than the emergency department.

2,628 face-to-face crisis contacts.*

ANSWER:

Washtenaw County Community Mental Health 24/7 call line

Washtenaw County Community Mental Health's 24/7 call line provides residents with an alternative to 911 for mental health concerns. Anyone can call 734-544-3050 to access support. The team can help with hospital screenings and admissions, but they are able to resolve most cases without having to admit individuals to the hospital.

8,500 calls are answered each month, on average.

*These results come from a random sample of WCCMH crisis cases.

How is the millage addressing misinformation?

Misconceptions about mental illness abound. Some equate mental illness with violence. Others believe mental illness is a result of personal weakness. Still others assume that individuals can easily “snap out of it” without professional support. Millage-funded programs aim to debunk these misconceptions and give the community the tools it needs to address mental illness with compassion and care.



ANSWER:

Mental Health First Aid certification

This training program is a nationally-recognized certification course to teach the skills needed to respond to mental illness and substance use concerns. The millage sponsors free Mental Health First Aid courses.

More than 100 individuals received certification.

ANSWER:

Washtenaw school district parent webinars

The Washtenaw Intermediate School District organized monthly webinars to help parents identify signs of mental illness and substance use and provide support on topics such as LGBTQ mental health and teen dating violence.

More than 200 parents participated.

ANSWER:

Voices of Youth journalism program

With millage funds, Concentrate facilitates a journalism program for Washtenaw County youth. Youth are given opportunities to write stories and social media posts, conduct research, take photos, and make podcasts.

19 youth participated in Voices of Youth workshops.

How is the millage addressing Black mental health?

In the Black community, mental health concerns are often overlooked or stigmatized, leading to disparities in access to care and support. Millage funds are used to address these barriers to promote well-being and resilience within the Black community.



ANSWER:

Washtenaw County Community Mental Health's Black Lives Matter task force

Washtenaw County Community Mental Health's Black Lives Matter task force hosts diversity, equity, and inclusion trainings for service and administrative staff. Additionally, the task force attends community events such as the Ypsilanti Jazz Fest to increase visibility about Washtenaw County Community Mental Health services.

BLM task force members hosted 2 training events for WCCMH staff.

ANSWER:

The Behavioral Health Collaborative for Young Black Men and Boys

This collaborative between Packard Health and the University of Michigan School of Social Work's Young Black Men, Masculinities, and Mental Health (YBMen) Project has developed a coalition of community organizations committed to services that address the behavioral health needs of young Black men and boys.

Nearly 400 young Black men and boys supported by coalition organizations.



"The National Alliance on Mental Illness - Washtenaw County's millage educational programs taught me about biology and genetics information. It takes a little bit of the guilt off of you in terms of control. It doesn't hit home until you look at the science."

— NAMI program participant



Criminal Justice

The millage supports criminal justice reform by funding jail-based treatment, education, and reentry services as well as programs that divert people with behavioral health issues away from the criminal legal justice system into community services whenever possible.



How is the millage supporting...

...criminal justice diversion?

Millage leaders recognize that the criminal legal justice system is not the appropriate place for most people with behavioral health issues. Washtenaw County Community Mental Health partners with others to identify innovative solutions for systemic reform.

ANSWER:

Law Enforcement Assisted Diversion and Deflection (LEADD)

LEADD provides an alternative to arrest and citation through intensive, low-barrier case management and connections to resources for people who commit, or are at high risk of committing, law violations related to mental illness, substance use, or chronic poverty. LEADD currently operates as a pilot in Ypsilanti Township.

22 active LEADD participants received case management and support in 2023.

ANSWER:

Bringing a youth assessment center to Washtenaw County

With millage funds, 15 local leaders are exploring ways to design and launch a youth assessment center in Washtenaw County. These evidence-based centers prevent youth from entering juvenile justice and child welfare systems by identifying underlying issues and connecting youth to appropriate care.

Four community conversations were hosted to gather feedback on the youth center model.

...people in mental health crisis?

By establishing emergency response systems that include social workers and mental health specialists, the millage ensures timely assistance for those experiencing mental health crises, reducing reliance on punitive measures and promoting holistic care and intervention.

ANSWER:

Ypsilanti Township's Co-Response Unit

This pilot puts a Community Mental Health crisis services professional and a sheriff's office deputy in one car to respond to mental health calls in the community. The team engages with individuals to identify their immediate needs. This may include providing referrals, resources, and supplies such as food, Narcan kits, hygiene items, clothing and more.

In 2023, the team had 543 engagements focused on supporting individuals experiencing homelessness and behavioral health concerns.

ANSWER:

Washtenaw County's Crisis Negotiation Team

Washtenaw County Community Mental Health social workers have joined this multidisciplinary team to deescalate potentially dangerous situations. Staff conduct risk assessments for violence and suicidality, recommend negotiation strategies, and share pertinent medical and mental health information to improve outcomes.

Four mental health experts joined 19 deployments in 2023 to help people in crisis, many of them in suicidal crisis.



How is the millage supporting an unarmed crisis response?



ANSWER:

Washtenaw County Community Mental Health's unarmed crisis team

Washtenaw County Community Mental Health's 24/7 crisis team is an unarmed, mobile crisis resource for residents in need across Washtenaw. This team of behavioral health experts helps people in their homes and in the community. A recent analysis shows that more than half of individuals served received follow-up care through WCCMH.

2,628 face-to-face crisis contacts.



Connecting individuals to services early in the process by meeting them where they are—physically, emotionally, psychologically—is the most effective way to help an individual meet their needs and support the system's effective management of community risk."

— Washtenaw County Sheriff Jerry Clayton

For more information about how the Washtenaw County Sheriff's Office is investing millage dollars to improve the criminal legal justice system, visit:

www.washtenaw.org/3986/Millage

Snapshot of 2023 WCCMH millage news coverage

\$2.3 million awarded to fill gaps in youth mental health care in Washtenaw County — Lonnie Huhman, The Sun Times News

A reentry journey in Washtenaw County — Millage News

Community health workers bring mental health home — Rylee Barnsdale, Concentrate

Community mental health collaboration with ISD helps students access mental health supports — Rylee Barnsdale, Second Wave Michigan

Here's how Michigan's community mental health agencies are helping prevent youth suicide — Brooke Marshall, Rapid Growth Media

Mental health first aid training prepares all Washtenaw County residents to respond in a crisis — Rylee Barnsdale, Concentrate

Michigan Ability Partners works to decrease homelessness in Washtenaw County — Millage News

Michigan's Certified Community Behavioral Health Clinics open mental health access to all — Joanne Bailey-Boorsma, Flintside

Millage approves funding for 5 Healthy Towns mental health initiative — Millage News

National Alliance on Mental Illness Washtenaw County expands outreach, education with millage funds — Natalia Holtzman, Concentrate

Signed into law in November, a new legislative package aligns with local efforts in Washtenaw County to address core juvenile justice problems — Millage News

Voices of Youth: Washtenaw County youth seek authentic, trustworthy conversations on mental health — Eric Gallippo, Concentrate

Washtenaw County Community Mental Health hires new youth and families wraparound facilitator, Millage News

Washtenaw County housing agencies expand services following millage funding project, Millage News

Washtenaw County mental health professional speaks on PTSD, Victoria Smith, WEMU Radio

Washtenaw County's mental health crisis team offers 24/7 mobile support for residents in need, Rylee Barnsdale, Concentrate

Washtenaw's jail-based behavioral health services aims to break the cycle of recidivism, Millage News

Ypsilanti-area mental health program, Millage News

Zen spaces, support animals, and more. Millage mini-grants fund emotional supports for students, Millage News



FOR MORE NEWS UPDATES, SUBSCRIBE TO OUR QUARTERLY NEWSLETTER.

In 2023, millage-funded initiatives were featured in diverse publications including Concentrate, MLive, the Sun Times, and more.

The background of the slide is a dense pattern of green brushstrokes in various shades, ranging from light lime to deep forest green. These strokes are of different thicknesses and directions, creating a textured, organic feel. A large, semi-transparent white rectangular box is centered on the slide, serving as a container for the text.

Partnerships

Working together to support mental health.

In 2023, the Millage Advisory Committee provided \$2.5 million to community partners working in one or more of the millage's funding priorities: service expansion, criminal justice diversion, youth support, prevention and education, and supportive housing.



5 Healthy Towns Foundation (5HF)

In partnership with local organizations, including Washtenaw County Community Mental Health, 5HF launched a One Big Thing initiative to improve mental health and well-being, and decrease substance use and mental health crises, within local communities.



Avalon Housing

Millage-funded staff at Avalon Housing provide case management, crisis intervention, peer recovery support, in-home primary care, and community building activities for residents across Avalon's 25 housing properties and through an on-site clinic at Packard Health.



CHRT

The Center for Health and Research Transformation educates the community about millage-funded services, ensures that residents understand what millage dollars are supporting, and provides backbone support for a number of millage-funded initiatives.



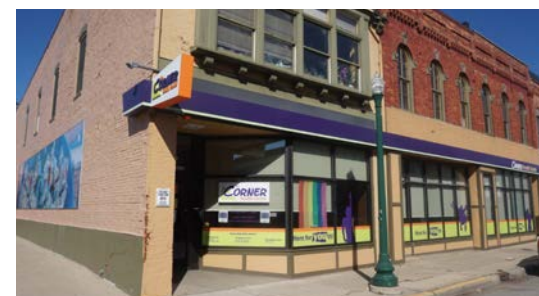
CLR Academy

With support from millage funds, CLR Academy offers a free summer program to K-8 youth in underserved communities. With activities ranging from soccer and basketball, to yoga, reading, art, and journaling, CLR builds on the natural leadership skills of its participants.



Children's Services

At Washtenaw County Children's Services, the millage provided funding for a newly embedded staff member: a mental health professional. This new millage-funded case worker helps youth and their families connect with much-needed community resources.



Corner Health Center

Through a millage-funded partnership, the Corner Health Center now offers psychiatric services in-house via two Washtenaw County Community Mental Health-affiliated providers. This partnership provides in-house treatment for youth and young adults.



kNEWjoy

With \$250,000 in millage funding, kNEWjoy is partnering with Packard Health, Corner Health Center, and other local organizations to launch a program designed to increase the mental health of, and resources and social supports available to, Black adolescent boys in the community.



Hope Clinic

Through a millage-funded partnership, the Hope Clinic now offers an additional eight hours of psychiatric services per week via two Washtenaw County Community Mental Health-affiliated providers. This allows Hope Clinic to see between five and 16 additional individuals per week.



Issue Media Group

In 2023, the millage continued to fund Issue Media Group's Voices of Youth program. Voices of Youth is a series that strives to shed light on local issues that are important to Washtenaw County's youth, from their own perspective.



Michigan Ability Partners

The millage funded an expansion of Michigan Ability Partners' Permanent Supportive Housing program, which provides permanent housing and social services to low-income and chronically houseless individuals. The millage also funds two housing support coordinators at MAP.



Miles Jeffrey Roberts Foundation

The MJRF Mental Health Champions program is a pilot program aimed at supporting Skyline High School student-athletes' social and emotional mental health. The program engages youth athletes through trusted adults, specifically coaches, trainers and other professionals within the athletic department.



NAMI Washtenaw

The National Alliance on Mental Illness (NAMI) Washtenaw County has used millage funds to conduct outreach efforts in underserved areas of Washtenaw County, to destigmatize mental health concerns, and to publish and disseminate a local mental health resource guide, "Taking Care."



Office of Community Economic Development

With millage funds, Washtenaw County Community Mental Health works with Washtenaw County's Office of Community Economic Development to provide emergency assistance for things like housing, utility bills, and healthcare.



Ozone House

Ozone House uses millage funds to operate its transitional living program, which provides housing, case management, therapy, and more to 17-24 year olds. Millage-funded youth specialists and case managers work with youth-in-residence and unhoused young adults to secure housing.



Packard Health

Packard Health works closely with Washtenaw County Community Mental Health to coordinate the care of clients. Packard clients now receive mental health care services on-site, along with medical care and social service connections, to support their health.



Public Defender, Prosecutor

The millage partners with the Washtenaw County Public Defender and Prosecuting Attorney on the Law Enforcement Assisted Diversion and Deflection (LEADD) program. LEADD works to keep low-level, low-risk offenders out of the criminal justice system by addressing underlying issues.



Shelter Association

The Shelter Association of Washtenaw County uses millage resources to add beds dedicated to clients who need immediate temporary housing. They also refer clients in need of behavioral health services to Washtenaw County Community Mental Health.



Student Advocacy Center

Check and Connect offers evidence-based mentoring to students involved with the juvenile justice system, students with mental health needs, or students who frequently miss school or struggle with grades. Millage funds support full-time mentors in Ypsilanti and Lincoln.



WISD

Millage matching dollars enabled WISD schools to receive a grant from the state of Michigan to hire mental health professionals. Four behavioral health professionals now support WISD students, working to destigmatize mental health and reach kids early before issues escalate.



Washtenaw County Health Department

The Washtenaw County Health Department uses millage funds to design a campaign to address community concerns around youth mental health and reducing stigma. #WishYouKnew Washtenaw campaign aims to spark honest and supportive conversations about mental health between youth and adults.



Washtenaw County Sheriff's Office

Washtenaw County Community Mental Health partners with the Sheriff's Office on a variety of reentry, diversion, deflection, and police service programs to help reduce the overrepresentation of people with behavioral health concerns in the criminal legal system.



Washtenaw County Trial Court

Washtenaw County Community Mental Health staffs the Trial Court with a Trauma Therapist and Day Treatment Court Client Coordinator to provide support to people in the criminal legal system with behavioral health concerns.



Washtenaw Health Project

The Washtenaw Health Project (WHP) works to expand access to health care by helping people sign up for health insurance. WHP navigators understand the Washtenaw County Community Mental Health system and connect clients to behavioral health services.



Ypsilanti Housing

Millage funding supports the Ypsilanti Housing Commission's Family Empowerment Program and their New Parkridge community in Ypsilanti. In New Parkridge, millage funding helped YHC secure housing vouchers and hire staff for case management and wraparound services.



By the Numbers

See how millage dollars are funding local initiatives and partnerships and learn about those being served.

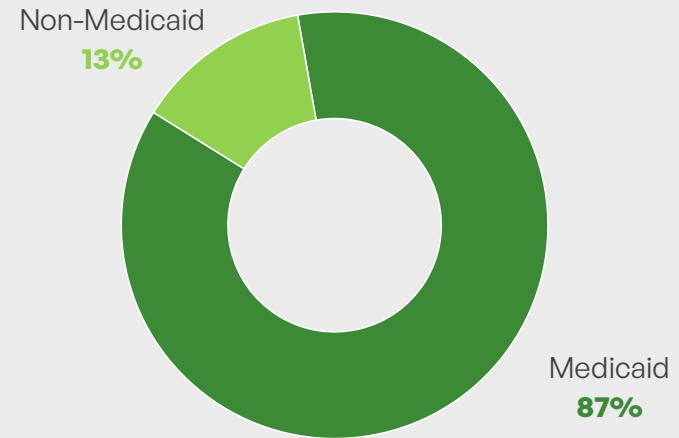
- Expanded services
- Youth supports
- Supportive housing
- Education and prevention
- Criminal justice diversion

Since it first began funding programs and initiatives in 2019, the millage has helped Washtenaw County Community Mental Health meet the growing behavioral health needs of our community. From expanding staff and services to funding the work of community partners, millage funds make great things possible.

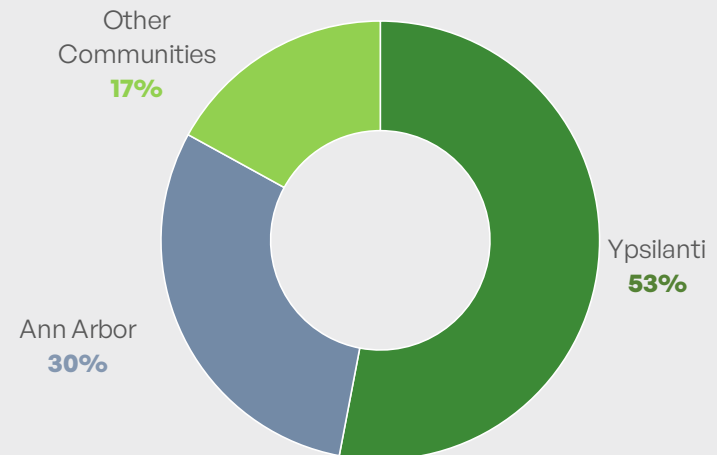
WCCMH SERVICES PROVIDED

Service Category	Number of Services
Targeted case management	11,159
Psychiatry services	1,762
Crisis intervention services	1,266
Peer services	827
Psych evaluations and diagnosis	362
Nursing assessments and services	350
Injections	137
Other	135
Screening for inpatient program	66
Group psychotherapy	35
Total	16,095

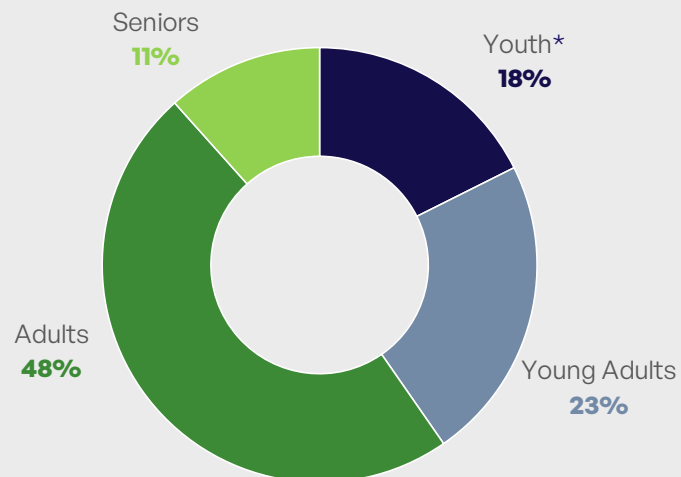
CARES CLIENTS BY INSURER



CARES CLIENTS BY LOCATION

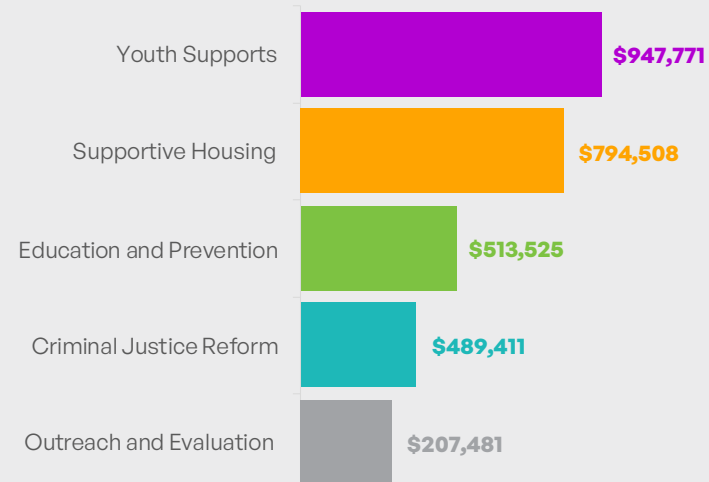


CARES CLIENTS BY AGE

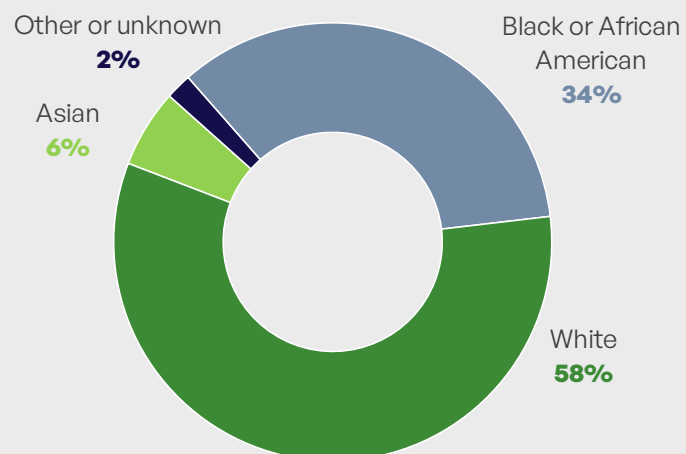


* This does not include students served by millage-funded partners, such as the Washtenaw Intermediate School District, the Corner Health Center, Ozone House, etc.

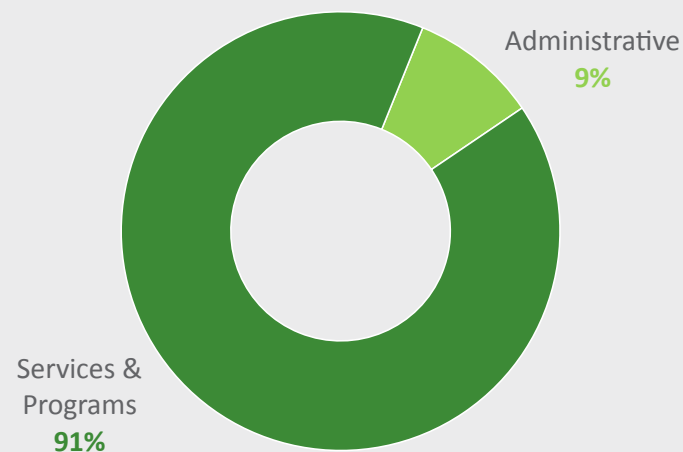
COMMUNITY INVESTMENTS



CARES CLIENTS BY RACE



2023 ADMINISTRATIVE EXPENSES



Service Expansion

\$3,801,144

Community Wide Service Expansion	\$3,801,144
WCCMH 24/7 access and triage support	\$561,208
WCCMH 24/7 crisis support services	\$787,500
WCCMH 24/7 crisis stabilization	\$384,477
WCCMH treatment and stabilization services	\$689,112
WCCCMH additional service expansion	\$791,624
Partners - consumer transportation	\$10,095
Partners - consumer medications	\$8,450
Partners - telehealth and EMR technology	\$88,200
Partners - additional service expansion	\$186,323
Service expansion - planning/ implementation/ administration	\$294,155

Supportive housing

\$794,508

Supportive housing service expansion	\$794,508
Shelter Association of Washtenaw County	\$39,069
Avalon Housing - permanent supportive housing	\$128,100
Avalon Housing - supportive services	\$165,465
Ypsilanti Housing	\$60,858
Ozone House - Supportive services for teens and young adults	\$113,302
Hoteling the homeless	\$188,134
Michigan Ability Partners - OCED	\$67,546*
Housing - planning/ implementation/ administration	\$99,580

Youth supports

\$947,771

Youth support service expansion	\$947,771
WISD - youth service expansion	\$361,556
Student Advocacy Center - Check and Connect program	\$157,121
Student Advocacy Center - advocating for student education	\$83,279
Youth Center - on-site mental health professional	\$90,000
Miles Jeffery Roberts Foundation	\$8,280
Packard Health - YBMen and kNEWjoy	\$31,250
WCHD - Youth anti-stigma #wishyouknew campaign	\$103,535
National Assessment Center	\$20,650
Community. Leadership. Revolution. (CLR) Academy	\$12,000*
Youth - planning/ implementation/ administration	\$92,100

*Allocated investment, not yet invoiced by client

Criminal justice reform

\$489,411

Criminal justice diversion service planning	\$489,411
Law Enforcement Assisted Diversion and Deflection	\$452,411
Diversion - planning/ implementation/ administration	\$37,000

Educate & prevent

\$513,525

Mental health education and prevention programming	\$513,525
National Alliance on Mental Illness	\$225,900
Washtenaw Health Project	\$165,000
CHRT - Educating about access and services	\$107,812
Concentrate - Voices of Youth	\$12,000*
Education and prevention - planning/ implementation/ administration	\$15,000

Evaluate & communicate

\$207,924

Outreach and evaluation	\$207,294
CHRT - project management	\$65,462
CHRT - communications	\$97,201
Evaluation - planning/ implementation/ administration	\$44,631

*Allocated investment, not yet invoiced by client



Advisory Committee

In the spring of 2019, Washtenaw County Community Mental Health (WCCMH) established a Millage Advisory Committee, also known as the MAC, to assist with strategic decisions about millage priorities and funding.

The committee, chaired by Nancy Graebner-Sundling, is a subcommittee of the WCCMH Board and reports to the Washtenaw County Board of Commissioners.

Their meetings are open to the public and include a forum for public comments.

To access millage-funded services, call
1-734-544-3050



Amanda Carlisle
Washtenaw Housing Alliance



Nancy Graebner-Sundling
CMH Board Representative



Holly Heaviland
Washtenaw Intermediate Schools



Barb Higman
NAMI Washtenaw



Derrick Jackson
Washtenaw County Sheriff's Office*



Bob King
WCCMH Board Representative



Ray Rion
Packard Health Representative



Alfreda Rooks
Michigan Medicine



Marlene Radzik
Michigan Medicine



Marianne Udow-Phillips
WCCMH Board Representative



George Waddles, Jr.
Community Member and Pastor



Karl Walker
WCCMH Board Representative

**After Jackson's announcement of his Sheriff campaign, he became a non voting member of the MAC.*



24/7