



Weddings at Gutshaus Gnevkwow

Where love stories
become living history





Where Your Story Begins...

Imagine exchanging vows in a rose-scented garden where countless lovers have celebrated before you, then dining with your dearest friends in a grand hall beneath original timber beams that have witnessed 165 years of cherished connections. At Gutshaus Gnevkow, your wedding day unfolds at an unhurried pace, in a place that feels like your own historic family estate.

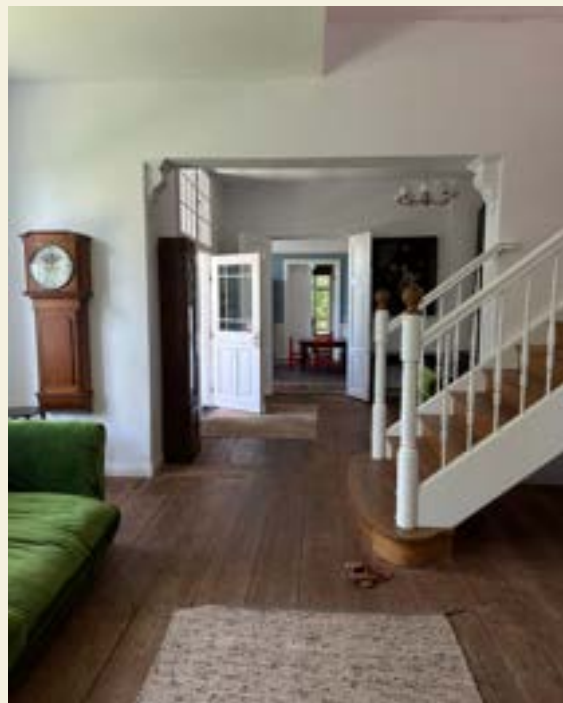


Here, your celebration becomes part of an ongoing legacy—a new chapter in the manor's timeless tradition of bringing hearts together. As you dance beneath vaulted ceilings and share morning conversations in our sunny kitchen, you will understand why couples choose not just a venue, but a home for their most precious moments.



The Manor

Ground Floor



+49 160 979 49 501

www.gutshausgnevkow.com

info@gnevkow.com



The Manor

Ground Floor

The Drawing Room - Grand reception room with period furnishings, perfect for family gatherings and elegant entertaining in authentic European style.

Dining Hall - Formal dining space accommodating your entire party, from intimate family meals to celebratory gatherings with Old World charm.

The Blue Living Room - Intimate space, ideal for quiet conversations or peaceful reading away from group activities.

The Kitchen - Spacious, fully-equipped space welcoming both family cooking and professional chef services, with modern amenities in historic surroundings.

The Cellar Vault (140m²) - Unique atmospheric space perfect for private entertainment, music, or special celebrations in historic vaulted chambers.



The Manor

First Floor

2 Master Bedroom Suites - 2 spacious principal bedrooms with ensuite bathrooms, offering the finest comfort for a family or just for you.



6 Additional Bedroom Suites - Beautifully appointed chambers ensuring 27 guests rest in comfort and style throughout their stay.



+49 160 979 49 501

www.gutshausgnevkow.com

info@gnevkow.com



Ceremony & Reception Spaces

Outdoor Spaces

Rose Garden & Grounds - Guests discover enchanting pathways among heritage roses while children explore safely in the enclosed estate. The expansive manicured lawns invite leisurely family activities, outdoor games, or simply peaceful moments enjoying the cool European climate.

Orchard - Pick apples, pears, quince or walnuts from our orchard and allow our chef to show you how to create jellies, compotes and jams.

Elevated Terraces (150m²) - These gracious outdoor rooms offer sweeping countryside views perfect for elegant al fresco dining, extended breakfast gatherings, or sunset cocktails as evening light transforms the landscape (available spring until autumn).

Fire Pit Area - As evening settles over your private estate, gather around the fire for intimate conversations, cultural storytelling, or quiet reflection under the stars. The natural setting creates perfect memories in complete privacy.

Indoor Spaces

When weather calls for indoor celebrations, our interconnected ground floor spaces provide seamless flow from cocktails in the Drawing Room to dinner in our dining areas, with dancing continuing in the atmospheric Cellar Vault.

Capacity: Up to 75 day guests for ceremonies and receptions.
Up to 27 overnight guests.



Ceremony & Reception Spaces



+49 160 979 49 501

www.gutshausgnevko.com

info@gnevko.com



Local Amenities

Amenties

Lakes - The house sits in the Mecklenburg Lake District and has a range of swimming lakes a short walk, bicycle or car ride away.

Transport - Gutshaus Gnevkow has well connected transport links for international guests and local arrivals to your event or wedding. Close to airports, rail and road networks its position offers guests multiple easy options to arrive at your special day.

Parking - There is ample room on-site for cars to park facilitating you, your guests and the event caterers, and staff.



Outdoor Spaces & Amenities



+49 160 979 49 501

www.gutshausgnevko.com

info@gnevko.com



Facilities

Exclusive Estate Accommodation

- Up to 27 guests across 8 luxuriously appointed bedroom suites
- 2 master suites
- 6 additional suites for 2-3 guests each, ideal for extended families or close friends traveling together
- Flexible arrangements - private suites for individual comfort or shared spaces for family connection

Wedding Event Types

- Weekend wedding celebrations (3-5 nights)
- Saturday Weddings
- Weekday Weddings



+49 160 979 49 501

www.gutshausgnevkow.com

info@gnevkow.com



What's included & service options

Included Amenities

- Exclusive use of house and grounds for your celebration period
- Table and chairs for up to 75 sit down guests
- Quality crockery and cutlery
- Bed places for up to 27 guests overnight with towels and linens
- Full kitchen facilities for catering teams
- On-site building manager for assistance throughout your event
- Ample private parking for guests
- Flexible event timing to suit your celebration

Catering & Celebrations

Venue Only (Dry Service)

- Full kitchen access for your caterers
- List of chefs and service staff that have worked at Gutshaus Gnevkow

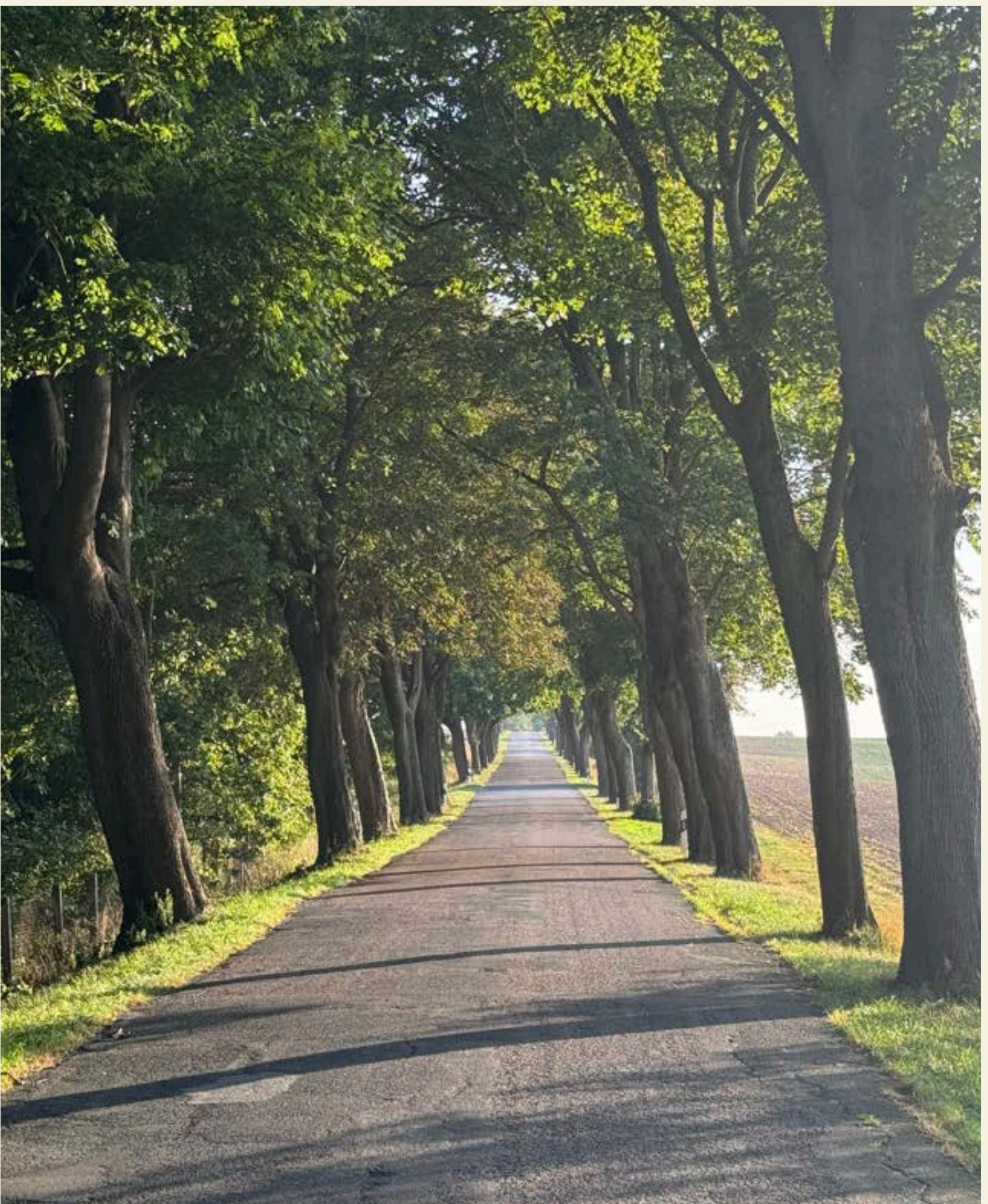
Full Service (Wet Service)

- Professional caterers/chef
- Wedding coordinator
- Staff move furniture into place and serve guests
- Purchase and delivery of food and drink



Coordination Support

We can provide wedding event coordination services or connect you with wedding coordinators based on your preferences. Our approach is refreshingly flexible - whether you prefer full-service planning or simply need recommendations, we adapt to your needs.



+49 160 979 49 501

www.gutshausgnevkwow.com

info@gnevkwow.com



Seasonal Wedding Experiences

Spring & Summer Estate Living April-September

- Extended outdoor leisure time with cool weather perfect for estate exploration
- Private gardens at peak beauty among blooming roses and fruit trees
- Al fresco family meals and sunset gatherings on the terrace

Autumn & Winter Estate Elegance October-March

- Cozy fireside gatherings in authentic European manor atmosphere
- Intimate indoor luxury perfect for sophisticated conversations and cultural experiences
- Dramatic seasonal beauty creating stunning photographs and unforgettable memories
- Perfect for holiday celebrations and special milestone occasions in historic European grandeur

Please note: The elevated terrace is best utilised during warmer months as it is an open-air space without heating.



Getting Here & Practical Details

Location & Access

Just 2 hours from Berlin by car through scenic countryside routes. This strategic location means international guests can arrive easily via direct flights to Berlin or Hamburg, and we can organise private car transfers to ensure seamless arrival at your exclusive countryside retreat

The house is well connected by public transport, there is a direct train service between Gnevkow station (just a 7 minute walk) and Berlin. This means your staff don't necessarily require a car.

Booking

Visit our website booking page for detailed pricing and availability.

- 30% deposit required at booking
- Custom quotes based on wedding size, duration, and luxury services required
- Cleaning fees apply as detailed in booking system

Contact us for a personalised quote based on your dates, duration, and specific needs.



Let's Plan Your Wedding

Contact us for a personalised consultation where we'll discuss your vision, provide detailed pricing information, and connect you with our recommended vendors. We invite you to book a visit to the manor in person, where you can walk our gardens, explore our rooms, and begin imagining your own love story unfolding within these historic walls.

Rest assured the team at Gutshaus Gnevkow can partner with you to deliver a wonderful wedding!



+49 160 979 49 501

www.gutshausgnevkow.com

info@gnevkow.com



Contact Information

<https://www.gutshausgnevkwow.com/>

info@gnevkwow.com

Call us on: +49 160 979 49 501

